

DEPARTMENT OF PUBLIC SAFETY AND CORRECTIONS

RECIDIVISM IN ADULT CORRECTIONS (PERCENT RETURN)

June 30, 2018

RECIDIVISM: RETURN TO CUSTODY FOLLOWING CONVICTION FOR A NEW FELONY OR TECHNICAL REVOCATION OF SUPERVISION AFTER HAVING BEEN RELEASED FROM INCARCERATION THROUGH COMPLETED SENTENCE, RELEASED ON PAROLE, CONDITIONAL RELEASE, OR SPLIT PROBATION SENTENCE. OFFENDERS RELEASED TO A DETAINER, RELEASED IN ERROR, DECEASED, OR TRANSFERRED TO ANOTHER JURISDICTION ARE NOT INCLUDED. AN OFFENDER MAY BE RELEASED MULTIPLE TIMES BUT IS ONLY COUNTED ONCE PER RELEASE YEAR.

OFFENDERS ARE TRACKED FOR A PERIOD OF TIME FROM DATE OF RELEASE BASED ON THE YEAR OF RETURN :

1st Year Returns: 12 months
2nd Year Returns: 24 months
3rd Year Returns: 36 months
4th Year Returns: 48 months
5th Year Returns: 60 months

RELEASE YR.:	1st Year (2016)	2nd Year (2015)	3rd Year (2014)	4th Year (2013)	5th Year (2012)
Total Population	15.3%	28.3%	34.1%	39.7%	43.7%
State Facilities	12.4%	25.3%	32.0%	38.1%	43.4%
Local Facilities	17.4%	31.4%	36.6%	42.8%	46.3%
Transitional Work Programs	11.1%	23.0%	30.6%	33.1%	37.7%
Impact	12.8%*	26.8%*	38.9%*	47.0%	46.4%
Blue Walters	12.3%	30.7%	39.2%	43.9%	48.9%
Parole Board Releases	4.2%	15.5%	24.4%	30.2%	38.5%
Sex Offenders	8.5%	17.3%	20.9%	29.4%	33.3%
Education					
Female	10.9%	20.4%	22.8%	26.5%	31.3%

DEPARTMENT OF PUBLIC SAFETY AND CORRECTIONS

RECIDIVISM IN ADULT CORRECTIONS (TOTAL POPULATION)

June 30, 2018

RECIDIVISM: RETURN TO CUSTODY FOLLOWING CONVICTION FOR A NEW FELONY OR TECHNICAL REVOCATION OF SUPERVISION AFTER HAVING BEEN RELEASED FROM INCARCERATION THROUGH COMPLETED SENTENCE, RELEASED ON PAROLE, CONDITIONAL RELEASE, OR SPLIT PROBATION SENTENCE. OFFENDERS RELEASED TO A DETAINER, RELEASED IN ERROR, DECEASED, OR TRANSFERRED TO ANOTHER JURISDICTION ARE NOT INCLUDED. AN OFFENDER MAY BE RELEASED MULTIPLE TIMES BUT IS ONLY COUNTED ONCE PER RELEASE YEAR.

OFFENDERS ARE TRACKED FOR A PERIOD OF TIME FROM DATE OF RELEASE BASED ON THE YEAR OF RETURN :

1st Year Returns: 12 months
2nd Year Returns: 24 months
3rd Year Returns: 36 months
4th Year Returns: 48 months
5th Year Returns: 60 months

	Total Releases	1st Year Returns	%	2nd Year Returns	%	3rd Year Returns	%	4th Year Returns	%	5th Year Returns	%
2004	13,691	2,736	20.0%	4,374	31.9%	5,295	38.7%	5,892	43.0%	6,328	46.2%
2005	13,550	2,485	18.3%	4,188	30.9%	5,124	37.8%	5,762	42.5%	6,234	46.0%
2006	13,032	2,301	17.7%	3,827	29.4%	4,736	36.3%	5,376	41.3%	5,875	45.1%
2007	12,650	2,235	17.7%	3,732	29.5%	4,646	36.7%	5,265	41.6%	5,731	45.3%
2008	12,846	2,141	16.7%	3,676	28.6%	4,733	36.8%	5,375	41.8%	5,831	45.4%
2009	12,938	2,087	16.1%	3,729	28.8%	4,625	35.7%	5,197	40.2%	5,623	43.5%
2010	14,760	2,265	15.3%	4,229	28.7%	5,231	35.4%	5,895	39.9%	6,354	43.0%
2011	14,218	2,249	15.8%	4,188	29.5%	5,174	36.4%	5,848	41.1%	6,300	44.3%
2012	14,477	2,343	16.2%	4,254	29.4%	5,249	36.3%	5,877	40.6%	6,322	43.7%
2013	15,232	2,453	16.1%	4,393	28.8%	5,346	35.1%	6,040	39.7%		
2014	15,009	2,317	15.4%	4,058	27.0%	5,125	34.1%				
2015	14,812	2,194	14.8%	4,193	28.3%						
2016	13,317	2,043	15.3%								

STATE OFFENDERS RELEASED FROM ADULT FACILITIES, LOCAL JAIL FACILITIES, AND TRANSITIONAL WORK PROGRAMS.

DEPARTMENT OF PUBLIC SAFETY AND CORRECTIONS

RECIDIVISM IN ADULT CORRECTIONS (STATE FACILITIES)

June 30, 2018

RECIDIVISM: RETURN TO CUSTODY FOLLOWING CONVICTION FOR A NEW FELONY OR TECHNICAL REVOCATION OF SUPERVISION AFTER HAVING BEEN RELEASED FROM INCARCERATION THROUGH COMPLETED SENTENCE, RELEASED ON PAROLE, CONDITIONAL RELEASE, OR SPLIT PROBATION SENTENCE. OFFENDERS RELEASED TO A DETAINER, RELEASED IN ERROR, DECEASED, OR TRANSFERRED TO ANOTHER JURISDICTION ARE NOT INCLUDED. AN OFFENDER MAY BE RELEASED MULTIPLE TIMES BUT IS ONLY COUNTED ONCE PER RELEASE YEAR.

OFFENDERS ARE TRACKED FOR A PERIOD OF TIME FROM DATE OF RELEASE BASED ON THE YEAR OF RETURN :

- 1st Year Returns:** 12 months
- 2nd Year Returns:** 24 months
- 3rd Year Returns:** 36 months
- 4th Year Returns:** 48 months
- 5th Year Returns:** 60 months

10

	Total Releases	1st Year Returns	%	2nd Year Returns	%	3rd Year Returns	%	4th Year Returns	%	5th Year Returns	%
2004	2,992	531	17.7%	911	30.4%	1,107	37.0%	1,246	41.6%	1,341	44.8%
2005	3,010	507	16.8%	924	30.7%	1,138	37.8%	1,287	42.8%	1,373	45.6%
2006	3,487	574	16.5%	969	27.8%	1,230	35.3%	1,413	40.5%	1,548	44.4%
2007	3,294	519	15.8%	950	28.8%	1,200	36.4%	1,357	41.2%	1,471	44.7%
2008	3,165	553	17.5%	944	29.8%	1,227	38.8%	1,387	43.8%	1,486	47.0%
2009	3,140	494	15.7%	885	28.2%	1,100	35.0%	1,208	38.5%	1,317	41.9%
2010	3,615	538	14.9%	1,025	28.4%	1,334	36.9%	1,483	41.0%	1,604	44.4%
2011	3,284	468	14.3%	940	28.6%	1,188	36.2%	1,351	41.1%	1,446	44.0%
2012	3,080	441	14.3%	873	28.3%	1,105	35.9%	1,240	40.3%	1,337	43.4%
2013	3,271	444	13.6%	849	26.0%	1,108	33.9%	1,246	38.1%		
2014	3,097	407	13.1%	776	25.1%	991	32.0%				
2015	3,030	363	12.0%	766	25.3%						
2016	2411	300	12.4%								

10

STATE OFFENDERS RELEASED FROM ADULT INSTITUTIONS.

DEPARTMENT OF PUBLIC SAFETY AND CORRECTIONS

RECIDIVISM IN ADULT CORRECTIONS (LOCAL FACILITIES)

June 30, 2018

RECIDIVISM: RETURN TO CUSTODY FOLLOWING CONVICTION FOR A NEW FELONY OR TECHNICAL REVOCATION OF SUPERVISION AFTER HAVING BEEN RELEASED FROM INCARCERATION THROUGH COMPLETED SENTENCE, RELEASED ON PAROLE, CONDITIONAL RELEASE, OR SPLIT PROBATION SENTENCE. OFFENDERS RELEASED TO A DETAINER, RELEASED IN ERROR, DECEASED, OR TRANSFERRED TO ANOTHER JURISDICTION ARE NOT INCLUDED. AN OFFENDER MAY BE RELEASED MULTIPLE TIMES BUT IS ONLY COUNTED ONCE PER RELEASE YEAR.

OFFENDERS ARE TRACKED FOR A PERIOD OF TIME FROM DATE OF RELEASE BASED ON THE YEAR OF RETURN :

- 1st Year Returns:** 12 months
- 2nd Year Returns:** 24 months
- 3rd Year Returns:** 36 months
- 4th Year Returns:** 48 months
- 5th Year Returns:** 60 months

	Total Releases	1st Year Returns	%	2nd Year Returns	%	3rd Year Returns	%	4th Year Returns	%	5th Year Returns	%
2004	7,536	1,771	23.5%	2,646	35.1%	3,121	41.4%	3,434	45.6%	3,674	48.8%
2005	7,114	1,472	20.7%	2,313	32.5%	2,783	39.1%	3,121	43.9%	3,374	47.4%
2006	5,941	1,257	21.2%	1,943	32.7%	2,357	39.7%	2,647	44.6%	2,868	48.3%
2007	5,776	1,246	21.6%	1,915	33.2%	2,309	40.0%	2,613	45.2%	2,828	49.0%
2008	6,189	1,192	19.3%	1,953	31.6%	2,402	38.8%	2,702	43.7%	2,934	47.4%
2009	6,676	1,190	17.8%	2,015	30.2%	2,533	37.9%	2,858	42.8%	3,067	45.9%
2010	7,764	1,352	17.4%	2,359	30.4%	2,908	37.5%	3,278	42.2%	3,521	45.4%
2011	7,832	1,403	17.9%	2,417	30.9%	3,000	38.3%	3,378	43.1%	3,641	46.5%
2012	8,431	1,546	18.3%	2,618	31.1%	3,246	38.5%	3,629	43.0%	3,902	46.3%
2013	9,034	1,634	18.1%	2,795	30.9%	3,425	37.9%	3,866	42.8%		
2014	9,172	1,605	17.5%	2,697	29.4%	3356	36.6%				
2015	9,154	1,595	17.4%	2,870	31.4%						
2016	8795	1534	17.4%								

STATE OFFENDERS RELEASED FROM LOCAL FACILITIES .

DEPARTMENT OF PUBLIC SAFETY AND CORRECTIONS

RECIDIVISM IN ADULT CORRECTIONS (TRANSITIONAL WORK PROGRAMS)

June 30, 2018

RECIDIVISM: RETURN TO CUSTODY FOLLOWING CONVICTION FOR A NEW FELONY OR TECHNICAL REVOCATION OF SUPERVISION AFTER HAVING BEEN RELEASED FROM INCARCERATION THROUGH COMPLETED SENTENCE, RELEASED ON PAROLE, CONDITIONAL RELEASE, OR SPLIT PROBATION SENTENCE. OFFENDERS RELEASED TO A DETAINER, RELEASED IN ERROR, DECEASED, OR TRANSFERRED TO ANOTHER JURISDICTION ARE NOT INCLUDED. AN OFFENDER MAY BE RELEASED MULTIPLE TIMES BUT IS ONLY COUNTED ONCE PER RELEASE YEAR.

OFFENDERS ARE TRACKED FOR A PERIOD OF TIME FROM DATE OF RELEASE BASED ON THE YEAR OF RETURN :

- 1st Year Returns:** 12 months
- 2nd Year Returns:** 24 months
- 3rd Year Returns:** 36 months
- 4th Year Returns:** 48 months
- 5th Year Returns:** 60 months

	Total Releases	1st Year Returns	%	2nd Year Returns	%	3rd Year Returns	%	4th Year Returns	%	5th Year Returns	%
2004	2,440	358	14.7%	659	27.0%	845	34.6%	962	39.4%	1,040	42.6%
2005	2,732	432	15.8%	800	29.3%	1,009	36.9%	1,138	41.7%	1,247	45.6%
2006	3,024	406	13.4%	795	26.3%	997	33.0%	1,138	37.6%	1,266	41.9%
2007	3,193	415	13.0%	760	23.8%	995	31.2%	1,128	35.3%	1,320	41.3%
2008	3,036	399	13.1%	764	25.2%	974	32.1%	1,147	37.8%	1,253	41.3%
2009	2,736	328	12.0%	662	24.2%	877	32.1%	990	36.2%	1,096	40.1%
2010	2,957	315	10.7%	679	23.0%	887	30.0%	1,021	34.5%	1,112	37.6%
2011	2,802	306	10.9%	683	24.4%	927	33.1%	1,052	37.5%	1,146	40.9%
2012	2,742	304	11.1%	635	23.2%	862	31.4%	965	35.2%	1,034	37.7%
2013	2,860	325	11.4%	641	22.4%	826	28.9%	947	33.1%		
2014	2,847	332	11.7%	654	23.0%	870	30.6%				
2015	2,741	273	10.0%	631	23.0%						
2016	2,274	253	11.1%								

STATE OFFENDERS RELEASED FROM TRANSITIONAL WORK PROGRAMS.

DEPARTMENT OF PUBLIC SAFETY AND CORRECTIONS

RECIDIVISM IN ADULT CORRECTIONS (BLUE WALTERS)

June 30, 2018

RECIDIVISM: RETURN TO CUSTODY FOLLOWING CONVICTION FOR A NEW FELONY OR TECHNICAL REVOCATION OF SUPERVISION AFTER HAVING BEEN RELEASED FROM INCARCERATION THROUGH COMPLETED SENTENCE, RELEASED ON PAROLE, CONDITIONAL RELEASE, OR SPLIT PROBATION SENTENCE. OFFENDERS RELEASED TO A DETAINER, RELEASED IN ERROR, DECEASED, OR TRANSFERRED TO ANOTHER JURISDICTION ARE NOT INCLUDED. AN OFFENDER MAY BE RELEASED MULTIPLE TIMES BUT IS ONLY COUNTED ONCE PER RELEASE YEAR.

OFFENDERS ARE TRACKED FOR A PERIOD OF TIME FROM DATE OF RELEASE BASED ON THE YEAR OF RETURN :

- 1st Year Returns:** 12 months
- 2nd Year Returns:** 24 months
- 3rd Year Returns:** 36 months
- 4th Year Returns:** 48 months
- 5th Year Returns:** 60 months

	Total Releases	1st Year Returns	%	2nd Year Returns	%	3rd Year Returns	%	4th Year Returns	%	5th Year Returns	%
2004	244	52	21.3%	93	38.1%	124	50.8%	130	53.3%	139	57.0%
2005	267	56	21.0%	101	37.8%	124	46.4%	139	52.1%	154	57.7%
2006	241	51	21.2%	83	34.4%	101	41.9%	115	47.7%	122	50.6%
2007	172	31	18.0%	60	34.9%	79	45.9%	88	51.2%	100	58.1%
2008	105	18	17.1%	34	32.4%	41	39.0%	52	49.5%	55	52.4%
2009	106	13	12.3%	29	27.4%	48	45.3%	49	46.2%	57	53.8%
2010	322	44	13.7%	90	28.0%	121	37.6%	134	41.6%	143	44.4%
2011	360	56	15.6%	110	30.6%	146	40.6%	163	45.3%	176	48.9%
2012	431	65	15.1%	123	28.5%	168	39.0%	193	44.8%		
2013	551	92	16.7%	178	32.3%	215	39.0%	242	43.9%		
2014	446	68	15.2%	137	30.7%	175	39.2%				
2015	539	73	13.5%	167	31.0%						
2016	536	66	12.3%								

INCLUDES OFFENDERS THAT PARTICIPATED IN BLUE WALTERS PRIOR TO RELEASE.

*BLUE WALTERS IS A SUBSTANCE ABUSE TREATMENT CENTER

**AUGUST 2005 ORLEANS/BLUE WALTERS PROGRAM IN NEW ORLEANS CLOSED

***TENSAS/BLUE WALTERS PROGRAM OPEN MAY 2004 TO JULY 2006.

****JULY 2006-JULY 2007 BLUE WALTERS PROGRAM TRANSFERRED TO SOUTH LOUISIANA CORRECTIONAL CENTER

*****JULY 2007 SOUTH LOUISIANA CORRECTIONAL CENTER RENAMED RICHWOOD

DEPARTMENT OF PUBLIC SAFETY AND CORRECTIONS

RECIDIVISM IN ADULT CORRECTIONS (PAROLE BOARD RELEASES)

June 30, 2018

RECIDIVISM: RETURN TO CUSTODY FOLLOWING CONVICTION FOR A NEW FELONY OR TECHNICAL REVOCATION OF SUPERVISION AFTER HAVING BEEN RELEASED FROM INCARCERATION THROUGH COMPLETED SENTENCE, RELEASED ON PAROLE, CONDITIONAL RELEASE, OR SPLIT PROBATION SENTENCE. OFFENDERS RELEASED TO A DETAINER, RELEASED IN ERROR, DECEASED, OR TRANSFERRED TO ANOTHER JURISDICTION ARE NOT INCLUDED. AN OFFENDER MAY BE RELEASED MULTIPLE TIMES BUT IS ONLY COUNTED ONCE PER RELEASE YEAR.

OFFENDERS ARE TRACKED FOR A PERIOD OF TIME FROM DATE OF RELEASE BASED ON THE YEAR OF RETURN :

1st Year Returns: 12 months
2nd Year Returns: 24 months
3rd Year Returns: 36 months
4th Year Returns: 48 months
5th Year Returns: 60 months

	Total Releases	1st Year Returns	%	2nd Year Returns	%	3rd Year Returns	%	4th Year Returns	%	5th Year Returns	%
2004	1,048	158	15.1%	302	28.8%	383	36.5%	424	40.5%	454	43.3%
2005	1,004	152	15.1%	305	30.4%	382	38.0%	427	42.5%	454	45.2%
2006	1,015	113	11.1%	243	23.9%	309	30.4%	363	35.8%	398	39.2%
2007	1,119	137	12.2%	272	24.3%	364	32.5%	415	37.1%	453	40.5%
2008	825	65	7.9%	187	22.7%	256	31.0%	304	36.8%	344	41.7%
2009	601	63	10.5%	135	22.5%	193	32.1%	234	38.9%	257	42.8%
2010	602	41	6.8%	122	20.3%	179	29.7%	209	34.7%	217	36.0%
2011	555	45	8.1%	122	22.0%	168	30.3%	188	33.9%	199	35.9%
2012	825	73	8.8%	176	21.3%	260	31.5%	291	35.3%	318	38.5%
2013	600	50	8.3%	115	19.2%	147	24.5%	181	30.2%		
2014	513	44	8.6%	86	16.8%	125	24.4%				
2015	425	28	6.6%	66	15.5%						
2016	308	13	4.2%								

EXCLUDES: IMPACT GRADUATES

DEPARTMENT OF PUBLIC SAFETY AND CORRECTIONS

RECIDIVISM IN ADULT CORRECTIONS (SEX OFFENDERS)

June 30, 2018

RECIDIVISM: RETURN TO CUSTODY FOLLOWING CONVICTION FOR A NEW FELONY OR TECHNICAL REVOCATION OF SUPERVISION AFTER HAVING BEEN RELEASED FROM INCARCERATION THROUGH COMPLETED SENTENCE, RELEASED ON PAROLE, CONDITIONAL RELEASE, OR SPLIT PROBATION SENTENCE. OFFENDERS RELEASED TO A DETAINER, RELEASED IN ERROR, DECEASED, OR TRANSFERRED TO ANOTHER JURISDICTION ARE NOT INCLUDED. AN OFFENDER MAY BE RELEASED MULTIPLE TIMES BUT IS ONLY COUNTED ONCE PER RELEASE YEAR.

OFFENDERS ARE TRACKED FOR A PERIOD OF TIME FROM DATE OF RELEASE BASED ON THE YEAR OF RETURN :

1st Year Returns: 12 months
2nd Year Returns: 24 months
3rd Year Returns: 36 months
4th Year Returns: 48 months
5th Year Returns: 60 months

	Total Releases	1st Year Returns	%	2nd Year Returns	%	3rd Year Returns	%	4th Year Returns	%	5th Year Returns	%
2004	811	196	24.2%	293	36.1%	348	42.9%	387	47.7%	415	51.2%
2005	769	173	22.5%	252	32.8%	290	37.7%	326	42.4%	349	45.4%
2006	675	133	19.7%	202	29.9%	309	45.8%	363	53.8%	307	45.5%
2007	580	101	17.4%	159	27.4%	194	33.4%	229	39.5%	257	44.3%
2008	620	100	16.1%	155	25.0%	195	31.5%	231	37.3%	258	41.6%
2009	620	93	15.0%	153	24.7%	190	30.6%	205	33.1%	229	36.9%
2010	619	92	14.9%	159	25.7%	206	33.3%	234	37.8%	250	40.4%
2011	652	61	9.4%	133	20.4%	181	27.8%	217	33.3%	235	36.0%
2012	603	56	9.3%	121	20.1%	164	27.2%	183	30.3%	201	33.3%
2013	683	74	10.8%	139	20.4%	181	26.5%	201	29.4%		
2014	622	56	9.0%	101	16.2%	130	20.9%				
2015	624	61	9.8%	108	17.3%						
2016	576	49	8.5%								

STATE OFFENDERS RELEASED FROM ADULT INSTITUTIONS, LOCAL FACILITIES, AND TRANSITIONAL WORK PROGRAMS.

SEX OFFENS A VIOLATION OF ANY PROVISION OF SUBPART C OF PART II, SUBPART B OF PART IV, OR SUBPART A(1) OR A(4) OF SUBPART V OF CHAPTER 1 OF TITLE 14 OF THE LOUISIANA REVISED STATUTES OF 1950.

DEPARTMENT OF PUBLIC SAFETY AND CORRECTIONS

RECIDIVISM IN ADULT CORRECTIONS (EDUCATION)

June 30, 2018

RECIDIVISM: RETURN TO CUSTODY FOLLOWING CONVICTION FOR A NEW FELONY OR TECHNICAL REVOCATION OF SUPERVISION AFTER HAVING BEEN RELEASED FROM INCARCERATION THROUGH COMPLETED SENTENCE, RELEASED ON PAROLE, CONDITIONAL RELEASE, OR SPLIT PROBATION SENTENCE. OFFENDERS RELEASED TO A DETAINER, RELEASED IN ERROR, DECEASED, OR TRANSFERRED TO ANOTHER JURISDICTION ARE NOT INCLUDED. AN OFFENDER MAY BE RELEASED MULTIPLE TIMES BUT IS ONLY COUNTED ONCE PER RELEASE YEAR.

OFFENDERS ARE TRACKED FOR A PERIOD OF TIME FROM DATE OF RELEASE BASED ON THE YEAR OF RETURN :

- 1st Year Returns:** 12 months
- 2nd Year Returns:** 24 months
- 3rd Year Returns:** 36 months
- 4th Year Returns:** 48 months
- 5th Year Returns:** 60 months

	Total Releases	1st Year Returns	%	2nd Year Returns	%	3rd Year Returns	%	4th Year Returns	%	5th Year Returns	%
2004	1,042	105	10.1%	252	24.2%	347	33.3%	416	39.9%	455	43.7%
2005	1,151	117	10.2%	264	22.9%	366	31.8%	430	37.4%	470	40.8%
2006	1,231	103	8.4%	243	19.7%	330	26.8%	396	32.2%	444	36.1%
2007	1,242	128	10.3%	261	21.0%	368	29.6%	434	34.9%	486	39.1%
2008	1,450	159	11.0%	333	23.0%	454	31.3%	540	37.2%	593	40.9%
2009	1,477	177	12.0%	351	23.8%	483	32.7%	544	36.8%	598	40.5%
2010	1,798	170	9.5%	383	21.3%	548	30.5%	634	35.3%	705	39.2%
2011	1,457	137	9.4%	366	25.1%	490	33.6%	570	39.1%	624	42.8%
2012	1,345	159	11.8%	340	25.3%	483	35.9%	562	41.8%	601	44.7%
2013	1,322	107	8.1%	254	19.2%	348	26.3%	415	31.4%		
2014	1,158	109	9.4%	228	19.7%	312	26.9%				
2015	1,071	75	7.0%	181	16.9%						
2016	878	69	7.9%								

STATE OFFENDERS RELEASED FROM ADULT INSTITUTIONS, LOCAL FACILITIES, AND TRANSITIONAL WORK PROGRAMS THAT HAVE COMPLETED AN EDUCATION CLASS WHILE INCARCERATED IN A STATE FACILITY.

DEPARTMENT OF PUBLIC SAFETY AND CORRECTIONS

RECIDIVISM IN ADULT CORRECTIONS (FEMALE RECIDIVISM)

June 30, 2018

RECIDIVISM: RETURN TO CUSTODY FOLLOWING CONVICTION FOR A NEW FELONY OR TECHNICAL REVOCATION OF SUPERVISION AFTER HAVING BEEN RELEASED FROM INCARCERATION THROUGH COMPLETED SENTENCE, RELEASED ON PAROLE, CONDITIONAL RELEASE, OR SPLIT PROBATION SENTENCE. OFFENDERS RELEASED TO A DETAINER, RELEASED IN ERROR, DECEASED, OR TRANSFERRED TO ANOTHER JURISDICTION ARE NOT INCLUDED. AN OFFENDER MAY BE RELEASED MULTIPLE TIMES BUT IS ONLY COUNTED ONCE PER RELEASE YEAR.

OFFENDERS ARE TRACKED FOR A PERIOD OF TIME FROM DATE OF RELEASE BASED ON THE YEAR OF RETURN :

- 1st Year Returns:** 12 months
- 2nd Year Returns:** 24 months
- 3rd Year Returns:** 36 months
- 4th Year Returns:** 48 months
- 5th Year Returns:** 60 months

	Total Releases	1st Year Returns	%	2nd Year Returns	%	3rd Year Returns	%	4th Year Returns	%	5th Year Returns	%
2004	1,562	234	15.0%	354	22.7%	437	28.0%	488	31.2%	528	33.8%
2005	1,493	205	13.7%	337	22.6%	410	27.5%	468	31.3%	507	34.0%
2006	1,445	173	12.0%	298	20.6%	360	24.9%	400	27.7%	434	30.0%
2007	1,423	168	11.8%	281	19.7%	345	24.2%	390	27.4%	440	30.9%
2008	1,437	169	11.8%	292	20.3%	390	27.1%	455	31.7%	501	34.9%
2009	1,435	138	9.6%	248	17.3%	317	22.1%	363	25.3%	402	28.0%
2010	1,739	163	9.4%	315	18.1%	394	22.7%	453	26.0%	499	28.7%
2011	1,627	169	10.4%	299	18.4%	374	23.0%	432	26.6%	469	28.8%
2012	1,551	181	11.7%	308	19.9%	390	25.1%	445	28.7%	485	31.3%
2013	1,662	174	10.5%	301	18.1%	379	22.8%	441	26.5%		
2014	1,661	161	9.7%	291	17.5%	379	22.8%				
2015	1,618	165	10.2%	330	20.4%						
2016	1,529	166	10.9%								

FEMALE STATE OFFENDERS RELEASED FROM ADULT INSTITUTIONS, LOCAL FACILITIES, AND TRANSITIONAL WORK PROGRAMS.

DEPARTMENT OF PUBLIC SAFETY AND CORRECTIONS

RECIDIVISM IN ADULT CORRECTIONS (ALL P&P COMPLETIONS)

June 30, 2018

RECIDIVISM: RETURN TO CUSTODY FOLLOWING CONVICTION FOR A NEW FELONY OR TECHNICAL REVOCATION OF SUPERVISION AFTER HAVING BEEN RELEASED FROM INCARCERATION THROUGH COMPLETED SENTENCE, RELEASED ON PAROLE, CONDITIONAL RELEASE, OR SPLIT PROBATION SENTENCE. OFFENDERS RELEASED TO A DETAINER, RELEASED IN ERROR, DECEASED, OR TRANSFERRED TO ANOTHER JURISDICTION ARE NOT INCLUDED. AN OFFENDER MAY BE RELEASED MULTIPLE TIMES BUT IS ONLY COUNTED ONCE PER RELEASE YEAR.

OFFENDERS ARE TRACKED FOR A PERIOD OF TIME FROM DATE OF RELEASE BASED ON THE YEAR OF RETURN :

1st Year Returns: 12 months
2nd Year Returns: 24 months
3rd Year Returns: 36 months
4th Year Returns: 48 months
5th Year Returns: 60 months

	Total Releases	1st Year Returns	%	2nd Year Returns	%	3rd Year Returns	%	4th Year Returns	%	5th Year Returns	%
2004	16,717	716	4.3%	1,461	8.7%	2,120	12.7%	2,718	16.3%	3,288	19.7%
2005	17,543	631	3.6%	1,467	8.4%	2,209	12.6%	2,921	16.7%	3,535	20.2%
2006	18,557	679	3.7%	1,667	9.0%	2,540	13.7%	3,295	17.8%	3,890	21.0%
2007	17,185	743	4.3%	1,691	9.8%	2,545	14.8%	3,175	18.5%	3,691	21.5%
2008	17,321	723	4.2%	1,728	10.0%	2,528	14.6%	3,205	18.5%	3,721	21.5%
2009	18,265	791	4.3%	1,777	9.7%	2,689	14.7%	3,347	18.3%	3,841	21.0%
2010	18,764	755	4.0%	1,774	9.5%	2,672	14.2%	3,363	17.9%	3,918	20.9%
2011	19,271	598	3.1%	1,925	10.0%	2,796	14.5%	3,470	18.0%	3,001	15.6%
2012	19,017	866	4.6%	1,880	9.9%	2,688	14.1%	2,454	12.9%	2,848	15.0%
2013	19,546	858	4.4%	1,837	9.4%	2,738	14.0%	2,422	12.4%		
2014	18,357	897	4.9%	1,293	7.0%	1,913	10.4%				
2015	17,939	548	3.1%	1,212	6.8%						
2016	18,255	619	3.4%								

DEPARTMENT OF PUBLIC SAFETY AND CORRECTIONS

RECIDIVISM IN ADULT CORRECTIONS (TOTAL POPULATION - CRIME TYPE)

6/30/20178

RECIDIVISM: RETURN TO CUSTODY FOLLOWING CONVICTION FOR A NEW FELONY OR TECHNICAL REVOCATION OF SUPERVISION AFTER HAVING BEEN RELEASED FROM INCARCERATION THROUGH COMPLETED SENTENCE, RELEASED ON PAROLE, CONDITIONAL RELEASE, OR SPLIT PROBATION SENTENCE. OFFENDERS RELEASED TO A DETAINER, RELEASED IN ERROR, DECEASED, OR TRANSFERRED TO ANOTHER JURISDICTION ARE NOT INCLUDED. AN OFFENDER MAY BE RELEASED MULTIPLE TIMES BUT IS ONLY COUNTED ONCE PER RELEASE YEAR.

OFFENDERS ARE TRACKED FOR A PERIOD OF TIME FROM DATE OF RELEASE BASED ON THE YEAR OF RETURN :

1st Year Returns: 12 months
2nd Year Returns: 24 months
3rd Year Returns: 36 months
4th Year Returns: 48 months
5th Year Returns: 60 months

	Total Releases	1st Year Returns	%	2nd Year Returns	%	3rd Year Returns	%	4th Year Returns	%	5th Year Returns	%
2004	13,691	2,736	20.0%	4,374	31.9%	5,295	38.7%	5,892	43.0%	6,328	46.2%
2005	13,550	2,485	18.3%	4,188	30.9%	5,124	37.8%	5,762	42.5%	6,234	46.0%
2006	13,032	2,301	17.7%	3,827	29.4%	4,736	36.3%	5,376	41.3%	5,875	45.1%
2007	12,650	2,235	17.7%	3,732	29.5%	4,646	36.7%	5,265	41.6%	5,731	45.3%
2008	12,846	2,141	16.7%	3,676	28.6%	4,733	36.8%	5,375	41.8%	5,831	45.4%
2009	12,938	2,087	16.1%	3,729	28.8%	4,625	35.7%	5,197	40.2%	5,623	43.5%
2010	14,760	2,265	15.3%	4,229	28.7%	5,231	35.4%	5,895	39.9%	6,354	43.0%
2011	14,218	2,249	15.8%	4,188	29.5%	5,174	36.4%	5,848	41.1%	6,300	44.3%
2012	14,477	2,343	16.2%	4,254	29.4%	5,249	36.3%	5,877	40.6%	6,322	43.7%
2013	15,232	2,453	16.1%	4,393	28.8%	5,346	35.1%	6,040	39.7%		
2014	15,009	2,317	15.4%	4,058	27.0%	5,125	34.1%				
2015	14,812	2,194	14.8%	4,193	28.3%						
2016	13,317	2,043	15.3%								

	1st Year (2016)	2nd Year (2015)	3rd Year (2014)	4th Year (2013)	5th Year (2012)
PERCENT RETURNED WITHIN EACH RELEASE CRIME TYPE (Based on Last Full Year's Returns)					
VIOLENT CRIMES:	1.4%	2.5%	3.1%	3.9%	4.3%
DRUG CRIMES:	5.0%	9.4%	12.0%	14.4%	16.2%
PROPERTY CRIMES:	6.3%	11.2%	12.8%	14.5%	15.7%
ALL OTHER CRIMES:	2.7%	5.2%	6.2%	6.9%	7.4%

STATE OFFENDERS RELEASED FROM ADULT INSTITUTIONS, LOCAL FACILITIES, AND WORK RELEASE CENTERS.
 CRIME TYPE IS THE CRIME THE OFFENDER SERVED TIME FOR AND THEN WAS RELEASED FROM INCARCERATION.

DEPARTMENT OF PUBLIC SAFETY AND CORRECTIONS

RECIDIVISM IN ADULT CORRECTIONS (TOTAL POPULATION - OFFENDER CLASS)

June 30, 2018

RECIDIVISM: RETURN TO CUSTODY FOLLOWING CONVICTION FOR A NEW FELONY OR TECHNICAL REVOCATION OF SUPERVISION AFTER HAVING BEEN RELEASED FROM INCARCERATION THROUGH COMPLETED SENTENCE, RELEASED ON PAROLE, CONDITIONAL RELEASE, OR SPLIT PROBATION SENTENCE. OFFENDERS RELEASED TO A DETAINER, RELEASED IN ERROR, DECEASED, OR TRANSFERRED TO ANOTHER JURISDICTION ARE NOT INCLUDED. AN OFFENDER MAY BE RELEASED MULTIPLE TIMES BUT IS ONLY COUNTED ONCE PER RELEASE YEAR.

OFFENDERS ARE TRACKED FOR A PERIOD OF TIME FROM DATE OF RELEASE BASED ON THE YEAR OF RETURN :

1st Year Returns: 12 months
2nd Year Returns: 24 months
3rd Year Returns: 36 months
4th Year Returns: 48 months
5th Year Returns: 60 months

	Total Releases	1st Year Returns	%	2nd Year Returns	%	3rd Year Returns	%	4th Year Returns	%	5th Year Returns	%
2004	13,691	2,736	20.0%	4,374	31.9%	5,295	38.7%	5,892	43.0%	6,328	46.2%
2005	13,550	2,485	18.3%	4,188	30.9%	5,124	37.8%	5,762	42.5%	6,234	46.0%
2006	13,032	2,301	17.7%	3,827	29.4%	4,736	36.3%	5,376	41.3%	5,875	45.1%
2007	12,650	2,235	17.7%	3,732	29.5%	4,646	36.7%	5,265	41.6%	5,731	45.3%
2008	12,846	2,141	16.7%	3,676	28.6%	4,733	36.8%	5,375	41.8%	5,831	45.4%
2009	12,938	2,087	16.1%	3,729	28.8%	4,625	35.7%	5,197	40.2%	5,623	43.5%
2010	14,760	2,265	15.3%	4,229	28.7%	5,231	35.4%	5,895	39.9%	6,354	43.0%
2011	14,218	2,249	15.8%	4,188	29.5%	5,174	36.4%	5,848	41.1%	6,300	44.3%
2012	14,477	2,343	16.2%	4,254	29.4%	5,249	36.3%	5,877	40.6%	6,322	43.7%
2013	15,232	2,453	16.1%	4,393	28.8%	5,346	35.1%	6,040	39.7%		
2014	15,009	2,317	15.4%	4,058	27.0%	5,125	34.1%				
2015	14,812	2,194	14.8%	4,193	28.3%						
2016	13,317	2,043	15.3%								

	1st Year (2016)	2nd Year (2015)	3rd Year (2014)	4th Year (2013)	5th Year (2012)
PERCENT RETURNED BY CURRENT OFFENDER CLASS (Based on Last Full Year's Returns)					
1ST OFFENDER:	9.3%	8.5%	7.9%	7.7%	7.2%
2ND OFFENDER:	23.6%	22.7%	21.4%	22.2%	21.7%
3RD OFFENDER:	24.5%	27.5%	28.7%	28.0%	28.3%
4TH OFFENDER+:	42.5%	41.1%	41.8%	41.8%	42.7%
UNKNOWN:	0.1%	0.1%	0.1%	0.2%	0.1%

STATE OFFENDERS RELEASED FROM ADULT INSTITUTIONS, LOCAL FACILITIES, AND WORK RELEASE CENTERS.

DEPARTMENT OF PUBLIC SAFETY AND CORRECTIONS

RECIDIVISM IN ADULT CORRECTIONS (TOTAL POPULATION - AGE)

June 30, 2018

RECIDIVISM: RETURN TO CUSTODY FOLLOWING CONVICTION FOR A NEW FELONY OR TECHNICAL REVOCATION OF SUPERVISION AFTER HAVING BEEN RELEASED FROM INCARCERATION THROUGH COMPLETED SENTENCE, RELEASED ON PAROLE, CONDITIONAL RELEASE, OR SPLIT PROBATION SENTENCE. OFFENDERS RELEASED TO A DETAINER, RELEASED IN ERROR, DECEASED, OR TRANSFERRED TO ANOTHER JURISDICTION ARE NOT INCLUDED. AN OFFENDER MAY BE RELEASED MULTIPLE TIMES BUT IS ONLY COUNTED ONCE PER RELEASE YEAR.

OFFENDERS ARE TRACKED FOR A PERIOD OF TIME FROM DATE OF RELEASE BASED ON THE YEAR OF RETURN :

1st Year Returns: 12 months
 2nd Year Returns: 24 months
 3rd Year Returns: 36 months
 4th Year Returns: 48 months
 5th Year Returns: 60 months

	Total Releases	1st Year Returns	%	2nd Year Returns	%	3rd Year Returns	%	4th Year Returns	%	5th Year Returns	%
2004	13,691	2,736	20.0%	4,374	31.9%	5,295	38.7%	5,892	43.0%	6,328	46.2%
2005	13,550	2,485	18.3%	4,188	30.9%	5,124	37.8%	5,762	42.5%	6,234	46.0%
2006	13,032	2,301	17.7%	3,827	29.4%	4,736	36.3%	5,376	41.3%	5,875	45.1%
2007	12,650	2,235	17.7%	3,732	29.5%	4,646	36.7%	5,265	41.6%	5,731	45.3%
2008	12,846	2,141	16.7%	3,676	28.6%	4,733	36.8%	5,375	41.8%	5,831	45.4%
2009	12,938	2,087	16.1%	3,729	28.8%	4,625	35.7%	5,197	40.2%	5,623	43.5%
2010	14,760	2,265	15.3%	4,229	28.7%	5,231	35.4%	5,895	39.9%	6,354	43.0%
2011	14,218	2,249	15.8%	4,188	29.5%	5,174	36.4%	5,848	41.1%	6,300	44.3%
2012	14,477	2,343	16.2%	4,254	29.4%	5,249	36.3%	5,877	40.6%	6,322	43.7%
2013	15,232	2,453	16.1%	4,393	28.8%	5,346	35.1%	6,040	39.7%		
2014	15,009	2,317	15.4%	4,058	27.0%	5,125	34.1%				
2015	14,812	2,194	14.8%	4,193	28.3%						
2016	13,317	2,043	15.3%								

	1st Year (2016)	2nd Year (2015)	3rd Year (2014)	4th Year (2013)	5th Year (2012)
PERCENT RETURNED WITHIN EACH RELEASE AGE GROUP (Based on Last Full Year's Returns)					
<=16	0.0%	0.0%	0.0%	0.0%	0.0%
17	0.0%	0.0%	0.0%	0.0%	0.0%
18	0.1%	0.2%	0.2%	0.2%	0.3%
19 - 20	0.5%	0.8%	1.1%	1.5%	1.8%
21 - 24	2.4%	4.5%	5.4%	6.7%	7.1%
25 - 29	3.1%	6.1%	7.6%	8.5%	9.7%
30 - 34	3.0%	5.6%	6.8%	8.0%	9.1%
35 - 39	2.6%	4.3%	4.8%	4.9%	5.1%
40 - 44	1.5%	2.7%	3.0%	3.5%	4.2%
45 - 49	1.0%	2.0%	2.5%	3.0%	3.2%
50 - 54	0.7%	1.4%	1.8%	2.1%	2.2%
55+	0.5%	0.9%	1.0%	1.2%	1.1%

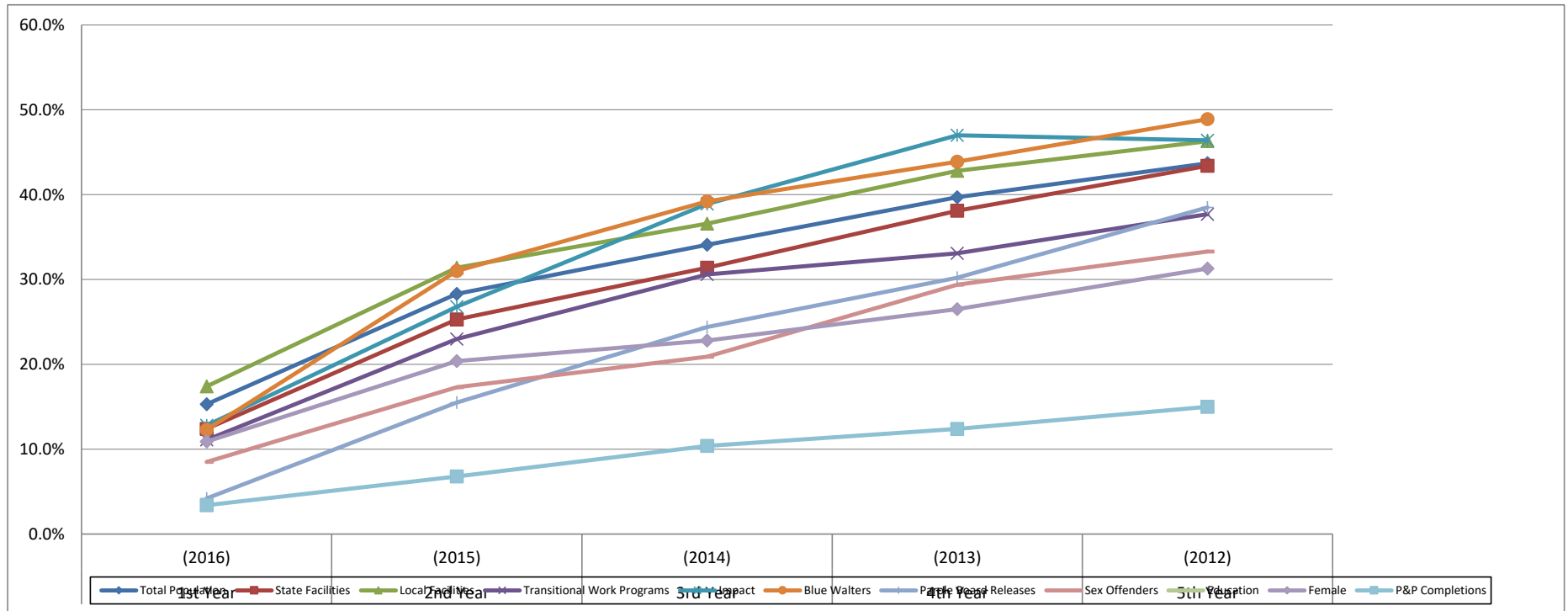
STATE OFFENDERS RELEASED FROM ADULT INSTITUTIONS, LOCAL FACILITIES, AND WORK RELEASE CENTERS. AGE AT TIME OF RELEASE.

DEPARTMENT OF PUBLIC SAFETY AND CORRECTIONS
RECIDIVISM IN ADULT CORRECTIONS
 June 30, 2018

RECIDIVISM: RETURN TO CUSTODY FOLLOWING CONVICTION FOR A NEW FELONY OR TECHNICAL REVOCATION OF SUPERVISION AFTER HAVING BEEN RELEASED FROM INCARCERATION THROUGH COMPLETED SENTENCE, RELEASED ON PAROLE, CONDITIONAL RELEASE, OR SPLIT PROBATION SENTENCE. OFFENDERS RELEASED TO A DETAINER, RELEASED IN ERROR, DECEASED, OR TRANSFERRED TO ANOTHER JURISDICTION ARE NOT INCLUDED. AN OFFENDER MAY BE RELEASED MULTIPLE TIMES BUT IS ONLY COUNTED ONCE PER RELEASE YEAR.

OFFENDERS ARE TRACKED FOR A PERIOD OF TIME FROM DATE OF RELEASE BASED ON THE YEAR OF RETURN :

- 1st Year Returns:** 12 months
- 2nd Year Returns:** 24 months
- 3rd Year Returns:** 36 months
- 4th Year Returns:** 48 months
- 5th Year Returns:** 60 months



Department of Public Safety and Corrections
INCARCERATION ONLY : Admissions/Releases Comparison 1994-2017

	1994			1995			1996			1997			1998			1999		
	admits	releases	net total	admits	releases	net total	admits	releases	net total	admits	releases	net total	admits	releases	net total	admits	releases	net total
Jan	1092	850	242	1041	963	78	1133	956	177	1198	994	204	1256	1058	198	1434	1147	287
Feb	856	781	75	974	885	89	1115	926	189	1115	921	194	1226	1020	206	1139	1142	-3
Mar	1083	919	164	1168	1016	152	1183	1040	143	1362	991	371	1387	1081	306	1468	1181	287
Apr	923	861	62	1095	932	163	1139	997	142	1332	1036	296	1401	1085	316	1316	1194	122
May	1105	903	202	1061	912	149	1278	1088	190	1362	1015	347	1342	1123	219	1357	1152	205
Jun	1027	957	70	1091	1015	76	1000	967	33	1230	1025	205	1318	1054	264	1251	1192	59
Jul	1051	895	156	981	948	33	1070	1026	44	1304	1076	228	1398	1142	256	1197	1284	-87
Aug	938	870	68	1146	957	189	1074	974	100	1245	1063	182	1281	1124	157	1335	1289	46
Sep	1114	891	223	1182	925	257	1135	964	171	1386	1104	282	1290	1147	143	1413	1255	158
Oct	1093	892	201	1053	1059	-6	1280	987	293	1350	1060	290	1231	1143	88	1257	1293	-36
Nov	969	875	94	1003	925	78	1018	963	55	1097	1059	38	1262	1095	167	1185	1082	103
Dec	813	943	-130	833	990	-157	1105	949	156	1075	1151	-76	1236	1176	60	1009	1140	-131
TOTAL	12064	10637	1427	12628	11527	1101	13530	11837	1693	15056	12495	2561	15628	13248	2380	15361	14351	1010

	2000			2001			2002			2003			2004			2005		
	admits	releases	net total	admits	releases	net total	admits	releases	net total	admits	releases	net total	admits	releases	net total	admits	releases	net total
Jan	1410	1191	219	1419	1220	199	1374	1188	186	1367	1259	108	1454	1210	244	1428	1275	153
Feb	1470	1144	326	1305	1196	109	1237	1220	17	1447	1250	197	1219	1273	-54	1150	1246	-96
Mar	1411	1191	220	1411	1260	151	1360	1220	140	1382	1331	51	1582	1281	301	1500	1310	190
Apr	1178	1198	-20	1307	1234	73	1479	1202	277	1352	1221	131	1446	1266	180	1427	1279	148
May	1437	1252	185	1437	1212	225	1388	1251	137	1370	1211	159	1399	1316	83	1564	1269	295
Jun	1285	1265	20	1166	1203	-37	1146	1201	-55	1345	1308	37	1264	1311	-47	1368	1220	148
Jul	1298	1231	67	1247	1313	-66	1344	1465	-121	1401	1248	153	1265	1313	-48	1217	1298	-81
Aug	1453	1235	218	1395	1298	97	1403	1238	165	1294	1296	-2	1448	1262	186	1501	1279	222
Sep	1426	1161	265	1338	1179	159	1285	1203	82	1477	1245	232	1258	1209	49	815	1427	-612
Oct	1403	1294	109	1359	1276	83	1259	1251	8	1482	1401	81	1362	1342	20	1089	1306	-217
Nov	1222	1221	1	1163	1141	22	1154	1327	-173	1142	1221	-79	1309	1259	50	1081	1266	-185
Dec	1053	1197	-144	1026	1236	-210	1119	1288	-169	1074	1305	-231	1019	1359	-340	866	1190	-324
TOTAL	16046	14580	1466	15573	14768	805	15548	15054	494	16133	15296	837	16025	15401	624	15006	15365	-359

	2006			2007			2008			2009			2010			2011		
	admits	releases	net total	admits	releases	net total	admits	releases	net total	admits	releases	net total	admits	releases	net total	admits	releases	net total
Jan	1213	1241	-28	1347	1204	143	1468	1276	192	1413	1289	124	1469	1338	131	1593	1456	137
Feb	1171	1185	-14	1320	1184	136	1345	1242	103	1318	1210	108	1273	1249	24	1470	1377	93
Mar	1449	1221	228	1480	1309	171	1420	1246	174	1572	1248	324	1558	1346	212	1497	1440	57
Apr	1125	1280	-155	1353	1214	139	1423	1263	160	1441	1328	113	1422	1494	-72	1443	1423	20
May	1449	1263	186	1520	1232	288	1327	1194	133	1445	1224	221	1510	1565	-55	1495	1415	80
Jun	1303	1241	62	1300	1243	57	1362	1169	193	1386	1257	129	1391	1409	-18	1366	1428	-62
Jul	1120	1267	-147	1286	1150	136	1451	1241	210	1489	1266	223	1308	1438	-130	1349	1398	-49
Aug	1523	1232	291	1522	1283	239	1557	1317	240	1607	1242	365	1571	1367	204	1666	1430	236
Sep	1384	1245	139	1383	1215	168	1135	1231	-96	1597	1241	356	1668	1346	322	1661	1370	291
Oct	1392	1249	143	1548	1301	247	1587	1290	297	1499	1292	207	1510	1832	-322	1510	1492	18
Nov	1276	1202	74	1202	1305	-103	1099	1218	-119	1371	1339	32	1272	1421	-149	1338	1373	-35
Dec	996	1332	-336	1048	1235	-187	1121	1345	-224	1099	1278	-179	1235	1490	-255	1123	1416	-293
TOTAL	15401	14958	443	16309	14875	1434	16295	15032	1263	17237	15214	2023	17187	17295	-108	17511	17018	493

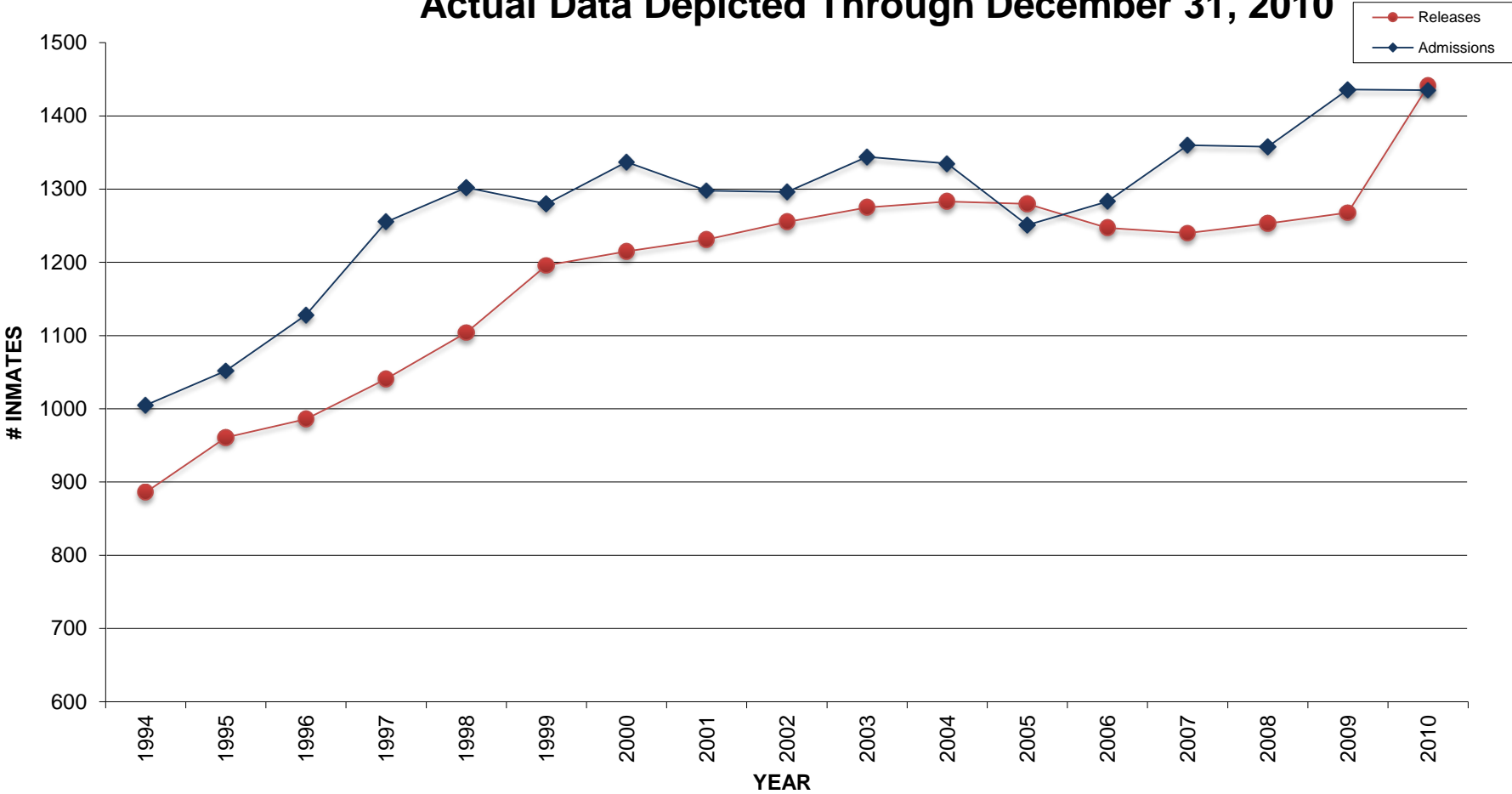
	2012 #			2013			2014			2015			2016			2017		
	admits	releases	net total	admits	releases	net total	admits	releases	net total	admits	release	net total	admits	release	net total	admits	release	net total
Jan	1574	1423	151	1602	1450	152	1426	1469	-43	1365	1601	-236	1445	1339	106	1435	1419	16
Feb	1572	1323	249	1337	1418	-81	1426	1421	5	1250	1461	-211	1305	1318	-13	1273	1315	-42
Mar	1672	1464	208	1369	1426	-57	1385	1467	-82	1668	1558	110	1396	1386	10	1527	1410	117
Apr	1393	1410	-17	1510	1398	112	1456	1485	-29	1479	1550	-71	1318	1403	-85	1241	1409	-168
May	1687	1469	218	1562	1538	24	1467	1460	7	1297	1522	-225	1498	1423	75	1447	1358	89
Jun	1386	1493	-107	1278	1472	-194	1258	1511	-253	1388	1606	-218	1306	1437	-131	1370	1460	-90
Jul	1317	1413	-96	1366	1572	-206	1459	1510	-51	1359	1439	-80	1340	1437	-97	1160	1367	-207
Aug	1515	1437	78	1560	1538	22	1431	1365	66	1493	1511	-18	1429	1375	54	1547	1419	128
Sep	1486	1406	80	1511	1504	7	1521	1543	-22	1377	1355	22	1593	1397	196	1445	1216	229
Oct	1571	1442	129	1586	1555	31	1442	1636	-194	1388	1419	-31	1391	1326	65	1423	1154	269
Nov	1298	1394	-96	1251	1394	-143	1118	1498	-380	1212	1380	-168	1159	1357	-198	1401	3220	-1819
Dec	1081	1448	-367	1121	1425	-304	1154	1607	-453	1155	1448	-293	1098	1312	-214	1162	1355	-193
TOTAL	17552	17122	430	17053	17690	-637	16543	17972	-1429	16431	17850	-1419	16278	16510	-232	16431	18102	-1671

Totals			
	admits	releases	net total
Jan	32956	23848	9108
Feb	30313	28707	1606
Mar	34290	30342	3948
Apr	31999	30162	1837
May	33804	30367	3437
Jun	23668	24234	-566
Jul	23776	24366	-590
Aug	26915	24124	2791
Sep	25360	23493	1867
Oct	25801	24858	943
Nov	22068	25536	-3468
Dec	19550	24266	-4716
TOTAL	330500	314303	16197

241 unprocessed custody admissions records included in monthly totals

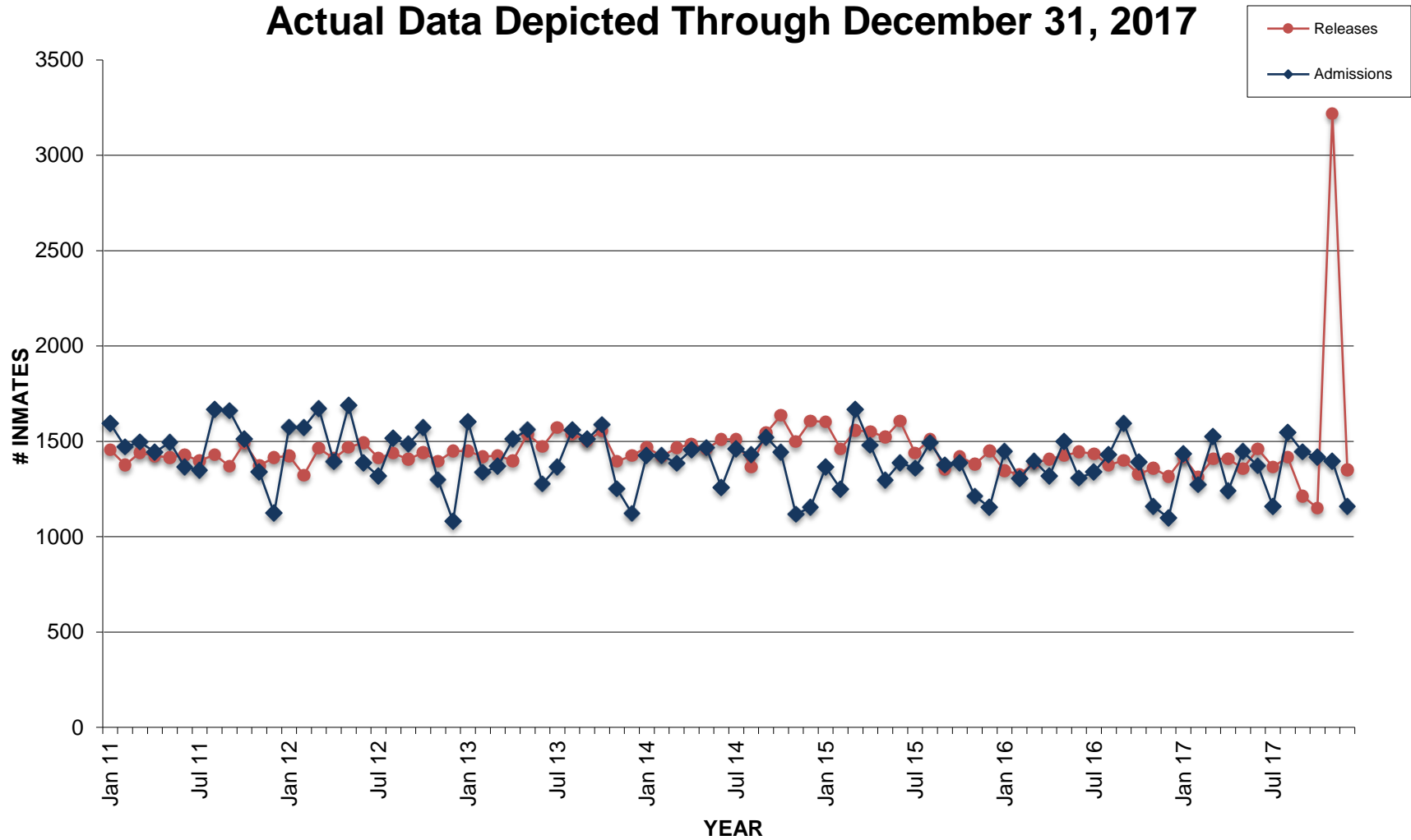
INCARCERATION ONLY: ADMISSIONS/RELEASES COMPARISON (Yearly Average) FOR 1994 - 2010

Actual Data Depicted Through December 31, 2010



INCARCERATION ONLY: ADMISSIONS/RELEASES COMPARISON FOR 2011 - 2017

Actual Data Depicted Through December 31, 2017



DEPARTMENT OF PUBLIC SAFETY AND CORRECTIONS

Summary of Adult Admissions 1994 - 1996

(Based upon the Most Serious Commitment Crime)

	1						2						
	Total Admissions	% of Total	Avg. Lgth.* Inc Sent	Avg. Lgth. Par Sen	Avg. Lgth. im of Ser	% to Inc.	Incarceration				Eligibilities**		
							New Fel	Rev. NF	Rev. Tech.	Rev. Waiv	Parole	GTPS	
1994													
Violent Crimes	1793	15%	18.57	13.67	10.32	100%	1281	81	288	143	47%	82%	
Property Crimes	4087	34%	4.86	5.18	4.62	100%	1774	479	1285	549	44%	89%	
Drug Crimes	4493	37%	5.37	5.43	5.19	100%	2094	662	1283	454	59%	90%	
All Others	1691	14%	5.59	4.30	4.25	100%	960	261	308	162	47%	93%	
Grand Total	12064		7.19	7.13	6.07	100%	6109	1483	3164	1308	50%	89%	

	1						2					
	Total Admissions	% of Total	Avg. Lgth.* Inc Sent	Avg. Lgth. Par Sen	Avg. Lgth. im of Ser	% to Inc.	Incarceration				Eligibilities**	
							New Fel	Rev. NF	Rev. Tech.	Rev. Waiv	Parole	GTPS
1995												
Violent Crimes	1843	15%	19.12	14.17	10.09	100%	1256	85	355	147	48%	80%
Property Crimes	4043	32%	4.47	4.72	4.40	100%	1684	445	1374	540	46%	89%
Drug Crimes	4837	38%	5.25	5.80	5.10	100%	2162	627	1546	502	60%	89%
All Others	1905	15%	5.56	4.64	4.23	100%	1063	225	398	219	50%	92%
Grand Total	12628		7.07	7.56	5.89	100%	6165	1382	3673	1408	52%	88%

	1						2					
	Total Admissions	% of Total	Avg. Lgth.* Inc Sent	Avg. Lgth. Par Sen	Avg. Lgth. im of Ser	% to Inc.	Incarceration				Eligibilities**	
							New Fel	Rev. NF	Rev. Tech.	Rev. Waiv	Parole	GTPS
1996												
Violent Crimes	1888	14%	18.98	13.82	9.07	100%	1232	101	372	183	45%	75%
Property Crimes	4423	33%	4.17	4.36	4.35	100%	1738	427	1414	844	48%	89%
Drug Crimes	5009	37%	5.00	5.97	5.03	100%	2126	603	1569	711	58%	87%
All Others	2210	16%	5.18	4.72	4.51	100%	1248	233	398	331	50%	91%
Grand Total	13530		6.71	6.99	5.59	100%	6344	1364	3753	2069	52%	87%

1 Crime category percentage of total admissions.

2 Percentage of admissions by crime category sentenced to incarceration.

* In the case of revocations due to new felony, the admission count may reflect the original commitment crime or the new felony, depending on the sentence length. The longer sentence length determines which crime is counted.

** Based upon the number of persons sentenced to incarcerations and those sentenced to probation supervision.

DEPARTMENT OF PUBLIC SAFETY AND CORRECTIONS

Summary of Adult Admissions 1997 - 1999

(Based upon the Most Serious Commitment Crime)

	1						2					
	Total Admissions	% of Total	Avg. Lgth.* Inc Sent	Avg. Lgth. Par Sen	Avg. Lgth. Tim of Ser	% to Inc.	Incarceration					
							New Fel	Rev. NF	Rev. Tech.	Rev. Waiv	Eligibilities** Parole	GTPS
1997												
Violent Crimes	2252	15%	17.26	12.08	8.38	100%	1459	99	428	266	36%	63%
Property Crimes	4837	32%	4.00	4.39	4.08	100%	1927	366	1622	922	46%	81%
Drug Crimes	5547	37%	5.12	5.91	4.91	100%	2092	553	1904	998	48%	74%
All Others	2420	16%	5.01	4.49	4.27	100%	1288	210	493	429	46%	81%
Grand Total	15056		6.56	6.55	5.29	100%	6766	1228	4447	2615	45%	76%

	1						2					
	Total Admissions	% of Total	Avg. Lgth.* Inc Sent	Avg. Lgth. Par Sen	Avg. Lgth. Tim of Ser	% to Inc.	Incarceration					
							New Fel	Rev. NF	Rev. Tech.	Rev. Waiv	Eligibilities** Parole	GTPS
1998												
Violent Crimes	2496	16%	14.93	9.86	8.38	100%	1425	142	539	390	32%	58%
Property Crimes	4955	32%	3.71	4.36	3.95	100%	1760	352	1674	1169	42%	73%
Drug Crimes	5970	38%	4.92	5.47	4.81	100%	2561	474	1768	1167	41%	62%
All Others	2207	14%	5.18	4.45	4.32	100%	1252	123	448	384	44%	71%
Grand Total	15628		6.17	5.86	5.20	100%	6998	1091	4429	3110	40%	66%

	1						2					
	Total Admissions	% of Total	Avg. Lgth.* Inc Sent	Avg. Lgth. Par Sen	Avg. Lgth. Tim of Ser	% to Inc.	Incarceration					
							New Fel	Rev. NF	Rev. Tech.	Rev. Waiv	Eligibilities** Parole	GTPS
1999												
Violent Crimes	3064	20%	13.86	9.18	8.27	100%	1474	293	663	634	38%	75%
Property Crimes	5342	35%	3.73	4.18	3.67	100%	1804	421	1735	1382	46%	84%
Drug Crimes	5348	35%	4.76	5.03	4.50	100%	2261	340	1696	1051	50%	78%
All Others	1607	10%	4.20	4.39	4.16	100%	1005	41	314	247	56%	85%
Grand Total	15361		6.16	5.40	4.89	100%	6544	1095	4408	3314	47%	80%

1 Crime category percentage of total admissions.

2 Percentage of admissions by crime category sentenced to incarceration.

* In the case of revocations due to new felony, the admission count may reflect the original commitment crime or the new felony, depending on the sentence length. The longer sentence length determines which crime is counted.

** Based upon the number of persons sentenced to incarceration and those sentenced to probation supervision.

DEPARTMENT OF PUBLIC SAFETY AND CORRECTIONS

Summary of Adult Admissions 2000 - 2002

(Based upon the Most Serious Commitment Crime)

2000	1						2					
	Total Admissions	% of Total	Avg. Lgth.* Inc Sent	Avg. Lgth. Par Sen	Avg. Lgth. Tim of Ser	% to Inc.	Incarceration					
							New Fel	Rev. NF	Rev. Tech.	Rev. Waiv	Eligibilities** Parole/GTPS	
Violent Crimes	3499	22%	13.10	8.06	8.41	100%	1677	285	796	741	37%	81%
Property Crimes	5428	34%	4.23	4.31	3.95	100%	1769	427	1770	1462	37%	90%
Drug Crimes	5521	34%	4.92	5.07	4.45	100%	2390	388	1652	1091	44%	88%
All Others	1590	10%	3.84	3.70	3.80	100%	924	58	341	267	51%	85%
Grand Total	16038		6.37	5.26	5.02	100%	6760	1158	4559	3561	41%	87%

2001	1						2					
	Total Admissions	% of Total	Avg. Lgth.* Inc Sent	Avg. Lgth. Par Sen	Avg. Lgth. Tim of Ser	% to Inc.	Incarceration					
							New Fel	Rev. NF	Rev. Tech.	Rev. Waiv	Eligibilities** Parole/GTPS	
Violent Crimes	3171	20%	12.70	8.36	8.61	100%	1564	233	740	634	36%	79%
Property Crimes	5339	34%	4.23	4.26	4.02	100%	1722	415	1689	1513	34%	91%
Drug Crimes	5465	38%	4.75	5.00	4.49	100%	2372	367	1573	1153	41%	89%
All Others	1598	10%	3.98	4.21	3.94	100%	858	49	386	305	50%	80%
Grand Total	15573		6.11	5.31	5.03	100%	6516	1064	4388	3605	38%	87%

2002	1						2					
	Total Admissions	% of Total	Avg. Lgth.* Inc Sent	Avg. Lgth. Par Sen	Avg. Lgth. Tim of Ser	% to Inc.	Incarceration					
							New Fel	Rev. NF	Rev. Tech.	Rev. Waiv	Eligibilities** Parole/GTPS	
Violent Crimes	2969	14%	12.59	8.25	8.20	100%	1501	199	684	585	36%	79%
Property Crimes	5278	35%	4.06	4.24	3.91	100%	1814	370	1690	1404	38%	92%
Drug Crimes	5737	38%	4.50	4.67	4.23	100%	2480	345	1698	1214	42%	90%
All Others	1575	11%	4.25	4.43	4.09	100%	854	62	405	254	53%	80%
Grand Total	15559		5.87	5.10	4.79	100%	6649	976	4477	3457	41%	88%

1 Crime category percentage of total admissions.

2 Percentage of admissions by crime category sentenced to incarceration.

* In the case of revocations due to new felony, the admission count may reflect the original commitment crime or the new felony, depending on the sentence length. The longer sentence length determines which crime is counted.

** Based upon the number of persons sentenced to incarceration and those sentenced to probation supervision.

DEPARTMENT OF PUBLIC SAFETY AND CORRECTIONS

Summary of Adult Admissions 2003 - 2005

(Based upon the Most Serious Commitment Crime)

2003	1						2						
	Total Admissions	% of Total	Avg. Lgth.* Inc Sent	Avg. Lgth. Par Sen	Avg. Lgth. im of Ser	% to Inc.	Incarceration					Eligibilities**	
							New Fel	Rev. NF	Rev. Tech.	Rev. Waiv	Parole	GTPS	
Violent Crimes	2859	18%	12.35	8.56	8.68	100%	1518	189	608	544	37%	79%	
Property Crimes	5185	32%	3.89	3.96	3.73	100%	1787	355	1616	1427	35%	93%	
Drug Crimes	6279	39%	4.40	4.76	4.17	100%	2560	394	1856	1469	40%	94%	
All Others	1810	11%	4.73	4.68	4.52	100%	877	83	481	369	46%	80%	
Grand Total	16133		5.68	5.17	4.76	100%	6742	1021	4561	3809	39%	89%	

2004	1						2						
	Total Admissions	% of Total	Avg. Lgth.* Inc Sent	Avg. Lgth. Par Sen	Avg. Lgth. im of Ser	% to Inc.	Incarceration					Eligibilities**	
							New Fel	Rev. NF	Rev. Tech.	Rev. Waiv	Parole	GTPS	
Violent Crimes	2749	17%	11.83	7.62	7.92	100%	1540	156	567	486	37%	8%	
Property Crimes	5396	34%	3.84	4.02	3.73	100%	1873	384	1683	1456	37%	94%	
Drug Crimes	6120	38%	4.17	4.60	4.03	100%	2406	443	1780	1491	42%	93%	
All Others	1760	11%	4.41	4.75	4.21	100%	871	83	458	348	47%	81%	
Grand Total	16025		5.40	4.92	4.52	100%	6690	1066	4488	3781	40%	90%	

2005	1						2						3			
	Total Admissions	% of Total	Avg. Lgth.* Inc Sent	Avg. Lgth. Par Sen	Avg. Lgth. im of Ser	% to Inc.	Incarceration							Eligibilities**		
							New Fel	Rev. NF	Rev. Tech.	Rev. Waiv	Waiv Tech	Waiv Pend	Parole	GTPS		
Violent Crimes	2385	16%	11.81	7.92	8.46	86%	1326	143	448	125	189	154	40%	79%		
Property Crimes	5176	34%	3.80	4.03	3.67	78%	1723	411	1554	356	647	485	40%	95%		
Drug Crimes	5855	39%	4.12	4.47	4.01	80%	2301	437	1542	400	630	545	42%	95%		
All Others	1590	11%	5.35	5.95	5.13	89%	787	92	405	134	102	70	47%	80%		
Grand Total	15006		5.36	5.02	4.60	100%	6137	1083	3949	1015	1568	1254	42%	91%		

1 Crime category percentage of total admissions.

2 Percentage of admissions by crime category sentenced to incarceration.

3 Revocations/Waivers has been removed as of May, 2005 and has been replaced with Waiver/Technical and Waiver/Pending

* In the case of revocations due to new felony, the admission count may reflect the original commitment crime or the new felony, depending on the sentence length. The longer sentence length determines which crime is counted.

** Based upon the number of persons sentenced to incarceration and those sentenced to probation supervision.

DEPARTMENT OF PUBLIC SAFETY AND CORRECTIONS

Summary of Adult Admissions 2006 - 2008

(Based upon the Most Serious Commitment Crime)

2006 ***	1		2				3							
	Total Admissions	% of Total	Avg. Lgth.* Inc Sent	Avg. Lgth. Par Sen	Avg. Lgth. im of Sen	% to Inc.	Incarceration						Eligibilities**	
							New Fel	Rev. NF	Rev. Tech.	Waiv Tech	Waiv Pend	Inc. Total	Parole	GTPS
Violent Crimes	2518	16%	12.35	8.66	8.53	82%	1382	164	516	174	282	2518	40%	76%
Property Crimes	5263	34%	4.58	4.38	4.33	71%	1848	416	1461	592	946	5263	33%	92%
Drug Crimes	5968	39%	4.88	4.87	4.61	76%	2486	480	1547	548	907	5968	37%	94%
All Others	1652	11%	5.31	5.15	4.87	81%	871	83	376	145	177	1652	43%	79%
Grand Total	15401		6.05	5.42	5.08	100%	6587	1143	3900	1459	2312	15401	37%	89%

2007 ***	1		2				3							
	Total Admissions	% of Total	Avg. Lgth.* Inc Sent	Avg. Lgth. Par Sen	Avg. Lgth. im of Sen	% to Inc.	Incarceration						Eligibilities**	
							New Fel	Rev. NF	Rev. Tech.	Waiv Tech	Waiv Pend	Inc. Total	Parole	GTPS
Violent Crimes	2799	17%	11.59	8.22	8.18	83%	1559	215	537	169	319	2799	38%	76%
Property Crimes	5469	34%	4.50	4.29	4.29	73%	2102	403	1481	252	1231	5469	36%	92%
Drug Crimes	6380	39%	4.81	4.70	4.60	77%	2855	496	1582	280	1167	6380	39%	93%
All Others	1661	10%	5.24	5.11	4.73	84%	965	96	336	87	177	1661	47%	79%
Grand Total	16309		5.91	5.22	5.04	100%	7481	1210	3936	788	2894	16309	39%	89%

2008 ***	1		2				3							
	Total Admissions	% of Total	Avg. Lgth.* Inc Sent	Avg. Lgth. Par Sen	Avg. Lgth. im of Sen	% to Inc.	Incarceration						Eligibilities**	
							New Fel	Rev. NF	Rev. Tech.	Waiv Tech	Waiv Pend	Inc. Total	Parole	GTPS
Violent Crimes	2735	17%	11.86	8.00	8.18	84%	1629	185	473	131	317	2735	41%	77%
Property Crimes	5600	34%	4.42	4.29	4.26	75%	2243	502	1437	270	1148	5600	39%	92%
Drug Crimes	6296	39%	4.98	4.81	4.70	79%	2882	510	1599	212	1093	6296	42%	94%
All Others	1664	10%	5.81	4.85	4.88	83%	1032	75	282	82	193	1664	45%	80%
Grand Total	16295		6.03	5.18	5.07	100%	7786	1272	3791	695	2751	16295	41%	89%

1 Crime category percentage of total admissions.

2 Percentage of admissions by crime category sentenced to incarceration.

3 Revocations/Waivers has been removed as of May, 2005 and has been replaced with Waiver/Technical and Waiver/Pending

* In the case of revocations due to new felony, the admission count may reflect the original commitment crime or the new felony, depending on the sentence length. The longer sentence length determines which crime is counted.

** Based upon the number of persons sentenced to incarceration and those sentenced to probation supervision.

DEPARTMENT OF PUBLIC SAFETY AND CORRECTIONS
Summary of Adult Admissions 2009 - 2011
 (Based upon the Most Serious Commitment Crime)

2009 **	1						2								3	
	Total Admissions	% of Total	Avg. Lgth.* Inc Sent	Avg. Lgth. Par Sen	Avg. Lgth. Tim of Ser	% to Inc.	Incarceration								Eligibilities**	
							New Fel	Rev. NF	Rev. Tech.	Waiv Tech	Waiv Pend	Inc. Total	Parole	GTPS		
Violent Crimes	3080	18%	10.15	8.44	8.61	89%	1987	237	502	96	258	3080	42%	76%		
Property Crimes	5761	33%	4.60	4.51	4.49	77%	2325	547	1563	202	1124	5761	40%	93%		
Drug Crimes	6444	37%	5.05	4.70	4.81	82%	3019	570	1684	147	1024	6444	40%	95%		
All Others	1952	11%	4.96	4.64	4.52	89%	1350	77	315	58	152	1952	46%	80%		
Grand Total	17237		5.80	5.31	5.25	100%	8681	1431	4064	503	2558	17237	41%	89%		

2010 **	1						2								3	
	Total Admissions	% of Total	Avg. Lgth.* Inc Sent	Avg. Lgth. Par Sen	Avg. Lgth. Tim of Ser	% to Inc.	Incarceration								Eligibilities**	
							New Fel	Rev. NF	Rev. Tech.	Waiv Tech	Waiv Pend	Inc. Total	Parole	GTPS		
Violent Crimes	3241	19%	10.25	8.20	8.65	89%	2102	251	526	19	343	3241	46%	79%		
Property Crimes	5939	35%	4.78	4.60	4.67	68%	2587	558	1469	144	1181	5939	44%	93%		
Drug Crimes	6081	35%	5.32	4.84	5.12	81%	2942	576	1421	165	977	6081	43%	95%		
All Others	1926	11%	5.13	4.45	4.68	89%	1379	58	273	89	127	1926	47%	79%		
Grand Total	17187		6.07	5.40	5.51	100%	9010	1443	3689	417	2628	17187	44%	90%		

2011 **	1						2								3	
	Total Admissions	% of Total	Avg. Lgth.* Inc Sent	Avg. Lgth. Par Sen	Avg. Lgth. Tim of Ser	% to Inc.	Incarceration								Eligibilities**	
							New Fel	Rev. NF	Rev. Tech.	Waiv Tech	Waiv Pend	Inc. Total	Parole	GTPS		
Violent Crimes	3338	19%	10.91	8.92	8.90	84%	2083	284	448	97	426	3338	44%	77%		
Property Crimes	6305	36%	4.58	4.67	4.50	76%	2613	660	1490	185	1357	6305	44%	93%		
Drug Crimes	5941	34%	5.11	4.90	4.90	80%	2801	547	1422	136	1035	5941	44%	94%		
All Others	1924	11%	5.18	4.76	4.70	92%	1426	75	266	27	130	1924	47%	80%		
Grand Total	17508		6.04	5.58	5.39	100%	8923	1566	3626	445	2948	17508	44%	89%		

- 1 Crime category percentage of total admissions.
- 2 Percentage of admissions by crime category sentenced to incarceration.
- 3 Revocations/Waivers has been removed as of May, 2005 and has been replaced with Waiver/Technical and Waiver/Pending
- * In the case of revocations due to new felony, the admission count may reflect the original commitment crime or the new felony, depending on the sentence length. The longer sentence length determines which crime is counted.
- ** Based upon the number of persons sentenced to incarceration and those sentenced to probation supervision.

DEPARTMENT OF PUBLIC SAFETY AND CORRECTIONS

Summary of Adult Admissions 2012 - 2015

(Based upon the Most Serious Commitment Crime)

2012 # **	1		2				3							
	Total Admissions	% of Total	Avg. Lgth.* Inc Sent	Avg. Lgth. Par Sen	Avg. Lgth. Tim of Ser	% to Inc.	Incarceration						Eligibilities**	
							New Fel	Rev. NF	Rev. Tech.	Waiv Tech	Waiv Pend	Inc. Total	Parole	GTPS
Violent Crimes	3490	20%	9.37	8.02	8.15	85%	2230	262	488	80	430	3490	43%	79%
Property Crimes	6359	36%	4.58	4.58	4.55	76%	2784	635	1420	213	1307	6359	39%	94%
Drug Crimes	5834	33%	5.16	4.88	5.00	81%	2856	571	1278	147	982	5834	40%	97%
All Others	1879	11%	5.16	4.58	4.53	89%	1371	65	243	39	161	1879	42%	82%
Grand Total	17562		5.79	5.42	5.34	100%	9241	1533	3429	479	2880	17562	40%	90%

2013 # **	1		2				3							
	Total Admissions	% of Total	Avg. Lgth.* Inc Sent	Avg. Lgth. Par Sen	Avg. Lgth. Tim of Ser	% to Inc.	Incarceration						Eligibilities**	
							New Fel	Rev. NF	Rev. Tech.	Waiv Tech	Waiv Pend	Inc. Total	Parole	GTPS
Violent Crimes	3468	20%	9.21	7.18	7.75	82%	2090	230	536	109	503	3468	40%	80%
Property Crimes	6329	37%	4.62	4.53	4.58	73%	2564	547	1492	285	1441	6329	39%	94%
Drug Crimes	5436	32%	5.07	4.70	4.96	77%	2497	481	1197	216	1045	5436	38%	97%
All Others	1812	11%	5.23	4.88	4.60	89%	1284	54	267	45	162	1812	44%	79%
Grand Total	17045		5.76	5.17	5.28	100%	8435	1312	3492	655	3151	17045	39%	90%

2014	1		2				3							
	Total Admissions	% of Total	Avg. Lgth.* Inc Sent	Avg. Lgth. Par Sen	Avg. Lgth. Tim of Ser	% to Inc.	Incarceration						Eligibilities**	
							New Fel	Rev. NF	Rev. Tech.	Waiv Tech	Waiv Pend	Inc. Total	Parole	GTPS
Violent Crimes	3362	20%	9.25	7.58	7.71	81%	1988	273	478	90	533	3362	40%	80%
Property Crimes	5802	35%	4.62	4.61	4.57	71%	2165	550	1406	244	1437	5802	39%	97%
Drug Crimes	5330	32%	5.08	4.67	4.98	76%	2411	470	1185	187	1077	5330	39%	97%
All Others	2049	12%	5.21	5.08	4.73	87%	1484	60	240	63	202	2049	35%	76%
Grand Total	16543		5.78	5.31	5.29	100%	8048	1353	3309	584	3249	16543	39%	91%

2015	1		2				3							
	Total Admissions	% of Total	Avg. Lgth.* Inc Sent	Avg. Lgth. Par Sen	Avg. Lgth. Tim of Ser	% to Inc.	Incarceration						Eligibilities**	
							New Fel	Rev. NF	Rev. Tech.	Waiv Tech	Waiv Pend	Inc. Total	Parole	GTPS
Violent Crimes	3447	21%	9.14	7.83	7.71	83%	2087	281	477	110	492	3447	37%	79%
Property Crimes	5829	35%	4.83	4.61	4.78	72%	2359	618	1249	248	1355	5829	37%	97%
Drug Crimes	5072	31%	5.20	4.81	5.03	78%	2325	500	1111	184	952	5072	37%	97%
All Others	2084	13%	5.13	5.24	4.61	89%	1563	72	225	39	185	2084	33%	78%
Grand Total	16432		5.89	5.44	5.38	100%	8334	1471	3062	581	2984	16432	36%	91%

1 Crime category percentage of total admissions.

2 Percentage of admissions by crime category sentenced to incarceration.

3 Revocations/Waivers has been removed as of May, 2005 and has been replaced with Waiver/Technical and Waiver/Pending

* In the case of revocations due to new felony, the admission count may reflect the original commitment crime or the new felony, depending on the sentence length. The longer sentence length determines which crime is counted.

** Based upon the number of persons sentenced to incarceration and those sentenced to probation supervision.

241 unprocessed custody admission records have been proportionally applied to the incarceration totals.

DEPARTMENT OF PUBLIC SAFETY AND CORRECTIONS
Summary of Adult Admissions 2017
 (Based upon the Most Serious Commitment Crime)

2016	1		2				3							
	Total Admissions	% of Total	Avg. Lgth.* Inc Sent	Avg. Lgth. Par Sen	Avg. Lgth. Dim of Sent	% to Inc.	Incarceration					Eligibilities**		
							New Fel	Rev. NF	Rev. Tech.	Waiv Tech	Waiv Pend	Inc. Total	Parole	GTPS
Violent Crimes	3514	21%	8.58	7.63	7.49	83%	2143	342	439	91	499	3514	47%	82%
Property Crimes	5802	35%	4.76	5.51	4.72	71%	2164	725	1221	253	1439	5802	54%	97%
Drug Crimes	4981	30%	5.27	5.91	5.16	78%	2199	553	1114	131	984	4981	52%	95%
Sex NonViolent	358	2%	7.95	7.91	6.38	95%	261	23	57	4	13	358	53%	24%
All Others	1756	11%	4.50	5.16	4.64	85%	1218	60	220	51	207	1756	41%	88%
Grand Total	16411	100%	5.81	6.08	5.40	100%	7985	1703	3051	530	3142	16411	50%	91%

2017	1		2				3							
	Total Admissions	% of Total	Avg. Lgth.* Inc Sent	Avg. Lgth. Par Sen	Avg. Lgth. Dim of Sent	% to Inc.	Incarceration					Eligibilities**		
							New Fel	Rev. NF	Rev. Tech.	Waiv Tech	Waiv Pend	Inc. Total	Parole	GTPS
Violent Crimes	3656	22%	8.67	7.19	7.29	82%	2192	353	467	100	544	3656	52%	86%
Property Crimes	5791	35%	4.61	5.00	4.59	71%	2173	722	1212	251	1433	5791	69%	99%
Drug Crimes	4906	30%	4.88	5.09	4.85	78%	2171	556	1092	126	961	4906	67%	97%
Sex NonViolent	367	2%	8.61	7.23	6.95	95%	266	23	59	4	15	367	48%	21%
All Others	1711	10%	4.70	4.83	4.71	86%	1200	59	215	49	188	1711	52%	89%
Grand Total	16431	100%	5.69	5.44	5.24	100%	8002	1713	3045	530	3141	16431	62%	93%

1 Crime category percentage of total admissions.

2 Percentage of admissions by crime category sentenced to incarceration.

3 Revocations/Waivers has been removed as of May, 2005 and has been replaced with Waiver/Technical and Waiver/Pending

* In the case of revocations due to new felony, the admission count may reflect the original commitment crime or the new felony,

DEPARTMENT OF PUBLIC SAFETY AND CORRECTIONS

Summary of Adult Incarceration Releases 1994-1996

(Based Upon Most Serious Commitment Crime)

1994	Total Releases	Avg.* Length of Sent. (Yrs.)	Avg.* Time Served (Yrs.)	Release Types				
				GTPS**	GT***	Fullterm	Parole****	Other*****
Violent Crimes	2305	9.5	4.6	71.0%	5.9%	2.1%	10.8%	10.2%
Property Crimes	3690	5.2	2.3	71.8%	0.2%	3.4%	12.6%	12.0%
Drug Crimes	3763	5.9	2.9	61.8%	0.1%	2.6%	22.8%	12.7%
All Others	879	4.9	2.3	75.9%	0.1%	1.9%	7.4%	14.7%
Grand Total	10637	6.4	3.0	68.4%	1.4%	2.7%	15.4%	12.1%

1995	Total Releases	Avg.* Length of Sent. (Yrs.)	Avg.* Time Served (Yrs.)	Release Types				
				GTPS**	GT***	Fullterm	Parole****	Other*****
Violent Crimes	2417	9.2	4.5	72.7%	3.6%	1.8%	12.2%	9.6%
Property Crimes	3827	4.8	2.3	70.4%	0.1%	3.5%	13.2%	12.8%
Drug Crimes	4296	5.5	2.8	62.9%	0.0%	2.7%	21.8%	12.6%
All Others	987	4.9	2.1	73.5%	0.1%	2.8%	6.4%	17.2%
Grand Total	11527	6.0	2.9	68.4%	0.8%	2.8%	15.6%	12.4%

1996	Total Releases	Avg.* Length of Sent. (Yrs.)	Avg.* Time Served (Yrs.)	Release Types				
				GTPS**	GT***	Fullterm	Parole****	Other*****
Violent Crimes	2480	9.0	4.8	75.4%	2.9%	2.5%	7.2%	10.8%
Property Crimes	3742	4.9	2.8	71.6%	0.2%	3.4%	10.5%	11.7%
Drug Crimes	4582	5.3	2.7	65.6%	0.0%	3.6%	18.9%	10.0%
All Others	1033	4.1	2.0	70.5%	0.1%	2.0%	6.8%	20.7%
Grand Total	11837	5.8	3.1	70.0%	0.7%	3.2%	12.7%	11.6%

* Offenders may have multiple convictions at the time of commitment; this data represents cumulative sentences at time for all convictions. Life & death sentences are computed as 99 yrs. for sentence averages. This is average sentence length only of those released and does not include inmates remaining in prison.

** Goodtime/parole supervision (diminution of sentence).

*** Goodtime; inmates sentenced prior to 1972.

**** Represents Parole Board actions.

***** Includes conviction overturns, court orders, death, and release to probation on a split sentence.

DEPARTMENT OF PUBLIC SAFETY AND CORRECTIONS
Summary of Adult Incarceration Releases 1997-1999
(Based Upon Most Serious Commitment Crime)

1997	Total Releases	Avg. * Length of Sent. (Yrs.)	Avg.* Time Served (Yrs.)	Release Types				
				GTPS**	GT***	Fullterm	Parole****	Other*****
Violent Crimes	2756	7.7	2.9	89.5%	1.4%	2.8%	3.6%	2.8%
Property Crimes	3999	4.4	1.3	88.6%	0.1%	3.9%	6.3%	1.1%
Drug Crimes	4671	4.8	1.6	82.5%	0.0%	4.5%	11.6%	1.3%
All Others	1069	3.7	1.1	90.9%	0.1%	3.2%	4.5%	1.3%
Grand Total	12495	5.2	1.7	86.7%	0.3%	3.8%	7.5%	1.6%

1998	Total Releases	Avg. * Length of Sent. (Yrs.)	Avg.* Time Served (Yrs.)	Release Types				
				GTPS**	GT***	Fullterm	Parole****	Other*****
Violent Crimes	2757	7.5	3.1	88.0%	1.9%	4.0%	3.0%	3.1%
Property Crimes	4185	4.0	1.3	88.7%	0.0%	4.4%	5.8%	1.0%
Drug Crimes	5086	4.4	1.6	83.4%	0.0%	4.9%	10.7%	1.0%
All Others	1220	3.5	1.0	90.8%	0.0%	3.4%	3.7%	2.1%
Grand Total	13248	4.8	1.8	86.7%	0.4%	4.4%	6.9%	1.5%

1999	Total Releases	Avg. * Length of Sent. (Yrs.)	Avg.* Time Served (Yrs.)	Release Types				
				GTPS**	GT***	Fullterm	Parole****	Other*****
Violent Crimes	2808	7.2	3.3	86.6%	1.2%	5.7%	3.2%	3.3%
Property Crimes	4457	3.7	1.4	88.0%	0.1%	4.4%	6.6%	0.9%
Drug Crimes	5683	4.3	1.6	81.4%	0.0%	5.2%	12.3%	1.1%
All Others	1403	3.1	1.1	92.1%	0.1%	3.8%	1.9%	2.2%
Grand Total	14351	4.6	1.8	85.5%	0.3%	4.9%	7.7%	1.6%

* Offenders may have multiple convictions at the time of commitment; this data represents cumulative sentences at time for all convictions. Life & death sentences are computed as 99 yrs. for sentence averages. This is average sentence length only of those released and does not include inmates remaining in prison.

** Goodtime/parole supervision (diminution of sentence).

*** Goodtime; inmates sentenced prior to 1972.

**** Represents Parole Board actions.

***** Includes conviction overturns, court orders, death, and release to probation on a split sentence.

DEPARTMENT OF PUBLIC SAFETY AND CORRECTIONS

Summary of Adult Incarceration Releases 2000-2002

(Based Upon Most Serious Commitment Crime)

2000	Total Releases	Avg. * Length of Sent. (Yrs.)	Avg.* Time Served (Yrs.)	Release Types				
				GTPS**	GT***	Fullterm	Parole****	Other*****
Violent Crimes	2681	7.2	3.3	86.4%	0.9%	6.9%	2.5%	3.4%
Property Crimes	4281	3.7	1.5	85.9%	0.0%	6.2%	6.9%	1.0%
Drug Crimes	6141	4.2	1.7	80.9%	0.0%	6.3%	11.5%	1.2%
All Others	1460	3.2	1.1	89.5%	0.1%	5.0%	3.3%	2.2%
Grand Total	14563	4.5	1.9	84.3%	0.2%	6.3%	7.7%	1.6%

2001	Total Releases	Avg. * Length of Sent. (Yrs.)	Avg.* Time Served (Yrs.)	Release Types				
				GTPS**	GT***	Fullterm	Parole****	Other*****
Violent Crimes	2928	8.0	3.6	83.7%	1.1%	8.8%	3.0%	3.3%
Property Crimes	5059	4.4	1.6	83.9%	0.0%	6.0%	8.9%	1.2%
Drug Crimes	5251	4.4	1.7	77.2%	0.0%	7.0%	14.6%	1.3%
All Others	1530	3.7	1.3	83.7%	0.0%	8.0%	4.0%	4.2%
Grand Total	14768	5.0	2.0	81.5%	0.2%	7.1%	9.3%	2.0%

2002	Total Releases	Avg. * Length of Sent. (Yrs.)	Avg.* Time Served (Yrs.)	Release Types				
				GTPS**	GT***	Fullterm	Parole****	Other*****
Violent Crimes	2771	8.6	4.2	82.5%	1.3%	8.8%	3.6%	3.7%
Property Crimes	5220	4.4	1.7	82.0%	0.0%	5.5%	11.1%	1.4%
Drug Crimes	5455	4.6	1.8	76.5%	0.0%	6.2%	15.9%	1.4%
All Others	1606	3.7	1.3	75.0%	0.0%	10.2%	4.6%	10.2%
Grand Total	15052	5.2	2.1	79.3%	0.3%	6.9%	10.8%	2.8%

* Offenders may have multiple convictions at the time of commitment; this data represents cumulative sentences at time for all convictions. Life & death sentences are computed as 99 yrs. for sentence averages. This is average sentence length only of those released and does not include inmates remaining in prison.

** Goodtime/parole supervision (diminution of sentence).

*** Goodtime; inmates sentenced prior to 1972.

**** Represents Parole Board actions.

***** Includes conviction overturns, court orders, death, and release to probation on a split sentence.

DEPARTMENT OF PUBLIC SAFETY AND CORRECTIONS

Summary of Adult Incarceration Releases 2003-2005

DEPARTMENT OF PUBLIC SAFETY AND CORRECTIONS

2003	Total Releases	Avg. * Length of Sent. (Yrs.)	Avg.* Time Served (Yrs.)	Release Types				
				GTPS**	GT***	Fullterm	Parole****	Other*****
Violent Crimes	2807	8.7	4.1	81.2%	1.4%	9.4%	3.9%	4.2%
Property Crimes	5286	4.3	1.7	83.2%	0.0%	5.6%	10.0%	1.2%
Drug Crimes	5742	4.2	1.7	76.6%	0.0%	6.7%	15.1%	1.6%
All Others	1509	3.7	1.3	71.4%	0.0%	10.3%	4.2%	14.0%
Grand Total	15344	5.0	2.1	79.2%	0.3%	7.2%	10.2%	3.1%

2004	Total Releases	Avg. * Length of Sent. (Yrs.)	Avg.* Time Served (Yrs.)	Release Types				
				GTPS**	GT***	Fullterm	Parole****	Other*****
Violent Crimes	2572	7.4	3.9	83.1%	0.6%	9.3%	2.2%	4.9%
Property Crimes	5421	3.9	1.6	84.6%	0.0%	4.7%	9.1%	1.6%
Drug Crimes	5964	4.2	1.7	79.5%	0.0%	6.1%	12.8%	1.7%
All Others	1443	3.4	1.3	72.7%	0.0%	10.3%	2.1%	14.9%
Grand Total	15400	4.5	2.0	81.3%	0.1%	6.5%	8.7%	3.4%

2005	Total Releases	Avg. * Length of Sent. (Yrs.)	Avg.* Time Served (Yrs.)	Release Types				
				GTPS**	GT***	Fullterm	Parole****	Other*****
Violent Crimes	2642	7.5	4.2	82.0%	1.0%	10.1%	2.6%	4.4%
Property Crimes	5524	3.7	1.7	84.7%	0.0%	4.7%	9.1%	1.5%
Drug Crimes	5824	4.0	1.7	82.9%	0.0%	4.8%	10.9%	1.4%
All Others	1374	3.4	1.5	73.0%	0.0%	12.6%	2.3%	12.2%
Grand Total	15364	4.5	2.1	82.5%	0.2%	6.4%	8.1%	2.9%

* Offenders may have multiple convictions at the time of commitment; this data represents cumulative sentences at time for all convictions. Life & death sentences are computed as 99 yrs. for sentence averages. This is average sentence length only of those released and does not include inmates remaining in prison.

** Goodtime/parole supervision (diminution of sentence).

*** Goodtime; inmates sentenced prior to 1972.

**** Represents Parole Board actions.

***** Includes conviction overturns, court orders, death, and release to probation on a split sentence.

DEPARTMENT OF PUBLIC SAFETY AND CORRECTIONS

Summary of Adult Incarceration Releases 2006-2008

DEPARTMENT OF PUBLIC SAFETY AND CORRECTIONS

2006	Total Releases	Avg. * Length of Sent. (Yrs.)	Avg.* Time Served (Yrs.)	Release Types				
				GTPS**	GT***	Fullterm	Parole****	Other*****
Violent Crimes	2602	9.6	4.8	81.7%	0.7%	11.1%	2.2%	4.3%
Property Crimes	5448	4.7	1.7	85.9%	0.1%	4.3%	8.5%	1.4%
Drug Crimes	5672	4.9	1.7	81.6%	0.1%	5.2%	11.8%	1.4%
All Others	1236	4.1	1.4	76.3%	0.0%	12.9%	1.3%	9.5%
Grand Total	14958	5.5	2.2	82.7%	0.2%	6.5%	8.0%	2.6%

2007	Total Releases	Avg. * Length of Sent. (Yrs.)	Avg.* Time Served (Yrs.)	Release Types				
				GTPS**	GT***	Fullterm	Parole****	Other*****
Violent Crimes	2428	9.6	4.8	77.9%	0.9%	11.9%	4.5%	4.9%
Property Crimes	5525	4.5	1.7	84.4%	0.0%	4.7%	9.5%	1.3%
Drug Crimes	5627	4.8	1.7	81.9%	0.1%	4.6%	11.9%	1.5%
All Others	1295	3.8	1.4	74.4%	0.0%	13.1%	1.8%	10.8%
Grand Total	14875	5.3	2.2	81.5%	0.2%	6.6%	8.9%	2.8%

2008	Total Releases	Avg. * Length of Sent. (Yrs.)	Avg.* Time Served (Yrs.)	Release Types				
				GTPS**	GT***	Fullterm	Parole****	Other*****
Violent Crimes	2402	7.8	4.6	77.3%	0.8%	15.0%	1.6%	5.3%
Property Crimes	5374	4.5	1.7	87.9%	0.0%	5.0%	5.8%	1.4%
Drug Crimes	5870	4.6	1.7	86.8%	0.0%	4.0%	8.0%	1.2%
All Others	1386	4.1	1.6	72.7%	0.0%	14.8%	1.9%	10.7%
Grand Total	15032	5.0	2.1	84.4%	0.1%	7.1%	5.6%	2.8%

* Offenders may have multiple convictions at the time of commitment; this data represents cumulative sentences at time for all convictions. Life & death sentences are computed as 99 yrs. for sentence averages. This is average sentence length only of those released and does not include inmates remaining in prison.

** Goodtime/parole supervision (diminution of sentence).

*** Goodtime; inmates sentenced prior to 1972.

**** Represents Parole Board actions.

***** Includes conviction overturns, court orders, death, and release to probation on a split sentence.

DEPARTMENT OF PUBLIC SAFETY AND CORRECTIONS

Summary of Adult Incarceration Releases 2009-2011

DEPARTMENT OF PUBLIC SAFETY AND CORRECTIONS

2009	Total Releases	Avg. * Length of Sent. (Yrs.)	Avg.* Time Served (Yrs.)	Release Types				
				GTPS**	GT***	Fullterm	Parole****	Other*****
Violent Crimes	2369	7.7	4.8	78.6%	0.6%	14.9%	0.6%	5.3%
Property Crimes	5423	4.0	1.7	89.2%	0.0%	5.3%	4.2%	1.3%
Drug Crimes	5903	4.4	1.8	88.4%	0.0%	4.0%	6.0%	1.6%
All Others	1519	3.5	1.4	74.0%	0.0%	12.7%	1.3%	12.0%
Grand Total	15214	4.7	2.2	85.7%	0.1%	7.0%	4.0%	3.1%

2010	Total Releases	Avg. * Length of Sent. (Yrs.)	Avg.* Time Served (Yrs.)	Release Types				
				GTPS**	GT***	Fullterm	Parole****	Other*****
Violent Crimes	2634	7.8	4.8	78.7%	0.3%	14.2%	0.8%	6.0%
Property Crimes	6040	4.4	1.7	89.3%	0.0%	5.4%	3.9%	1.4%
Drug Crimes	6764	4.7	1.9	89.5%	0.0%	4.2%	5.0%	1.3%
All Others	1815	3.8	1.5	76.1%	0.0%	12.0%	1.0%	10.9%
Grand Total	17253	5.0	2.3	86.4%	0.1%	7.0%	3.5%	3.1%

2011	Total Releases	Avg. * Length of Sent. (Yrs.)	Avg.* Time Served (Yrs.)	Release Types				
				GTPS**	GT***	Fullterm	Parole****	Other*****
Violent Crimes	3018	8.0	4.6	76.7%	0.4%	13.7%	1.1%	4.9%
Property Crimes	6033	4.9	1.5	85.0%	0.0%	6.1%	3.5%	1.5%
Drug Crimes	6186	5.0	1.6	91.9%	0.0%	5.6%	5.0%	1.3%
All Others	1885	4.4	1.6	71.0%	0.0%	12.8%	1.3%	7.5%
Grand Total	17122	5.6	2.3	84.5%	0.1%	8.0%	3.4%	2.7%

* Offenders may have multiple convictions at the time of commitment; this data represents cumulative sentences at time for all convictions. Life & death sentences are computed as 99 yrs. for sentence averages. This is average sentence length only of those released and does not include inmates remaining in prison.

** Goodtime/parole supervision (diminution of sentence).

*** Goodtime; inmates sentenced prior to 1972.

**** Represents Parole Board actions.

***** Includes conviction overturns, court orders, death, and release to probation on a split sentence.

DEPARTMENT OF PUBLIC SAFETY AND CORRECTIONS

Summary of Adult Incarceration Releases 2012-2015

DEPARTMENT OF PUBLIC SAFETY AND CORRECTIONS

2012	Total Releases	Avg. * Length of Sent. (Yrs.)	Avg.* Time Served (Yrs.)	Release Types				
				GTPS**	GT***	Fullterm	Parole****	Other*****
Violent Crimes	2905	8.4	4.8	75.3%	0.2%	14.9%	3.1%	6.5%
Property Crimes	6021	4.6	1.6	86.1%	0.0%	6.7%	5.5%	1.7%
Drug Crimes	6207	5.0	1.8	86.8%	0.0%	5.2%	6.5%	1.5%
All Others	1887	4.2	1.5	78.7%	0.0%	13.6%	2.1%	5.6%
Grand Total	17020	5.5	2.4	83.7%	0.0%	8.3%	5.1%	2.9%

2013	Total Releases	Avg. * Length of Sent. (Yrs.)	Avg.* Time Served (Yrs.)	Release Types				
				GTPS**	GT***	Fullterm	Parole****	Other*****
Violent Crimes	3073	8.6	5.1	75.7%	0.3%	14.5%	3.2%	6.4%
Property Crimes	6313	4.6	1.7	89.0%	0.0%	5.8%	3.2%	2.0%
Drug Crimes	6293	5.1	1.8	89.1%	0.0%	4.4%	4.7%	1.8%
All Others	2011	4.0	1.5	76.8%	0.0%	14.3%	1.5%	7.4%
Grand Total	17690	5.6	2.5	85.3%	0.0%	7.8%	3.5%	3.3%

2014	Total Releases	Avg. * Length of Sent. (Yrs.)	Avg.* Time Served (Yrs.)	Release Types				
				GTPS**	GT***	Fullterm	Parole****	Other*****
Violent Crimes	3166	9.2	5.1	76.8%	0.1%	14.0%	3.5%	5.6%
Property Crimes	6169	4.8	1.6	92.6%	0.0%	3.2%	2.8%	1.4%
Drug Crimes	6262	5.0	1.7	91.9%	0.0%	3.0%	3.5%	1.6%
All Others	2375	4.2	1.5	74.3%	0.0%	17.9%	1.1%	6.7%
Grand Total	17972	5.8	2.3	87.1%	0.0%	7.0%	2.9%	2.9%

2015	Total Releases	Avg. * Length of Sent. (Yrs.)	Avg.* Time Served (Yrs.)	Release Types				
				GTPS**	GT***	Fullterm	Parole****	Other*****
Violent Crimes	3181	9.6	5.0	76.7%	0.2%	13.0%	4.0%	6.3%
Property Crimes	6168	4.8	1.4	94.3%	0.0%	2.6%	1.8%	1.3%
Drug Crimes	6135	5.3	1.6	93.4%	0.0%	2.2%	2.9%	1.5%
All Others	2366	4.7	1.5	76.4%	0.0%	15.8%	0.6%	7.1%
Grand Total	17850	5.8	2.1	88.5%	0.0%	6.1%	2.4%	3.0%

* Offenders may have multiple convictions at the time of commitment; this data represents cumulative sentences at all convictions. Life & death sentences are computed as 99 yrs. for sentence averages. This is average sentence length of those released and does not include inmates remaining in prison.

** Goodtime/parole supervision (diminution of sentence).

*** Goodtime; inmates sentenced prior to 1972.

**** Represents Parole Board actions.

***** Includes conviction overturns, court orders, death, and release to probation on a split sentence.

DEPARTMENT OF PUBLIC SAFETY AND CORRECTIONS
Summary of Adult Incarceration Releases 2017
DEPARTMENT OF PUBLIC SAFETY AND CORRECTIONS

2016	Total Releases	Avg. * Length of Sent. (Yrs.)	Avg.* Time Served (Yrs.)	Release Types				
				GTPS**	GT***	Fullterm	Parole****	Other*****
Violent Crimes	3002	9.0	4.8	75.3%	0.2%	14.5%	3.3%	6.7%
Property Crimes	5598	4.8	1.3	94.9%	0.0%	2.4%	1.6%	1.1%
Drug Crimes	5577	5.3	1.5	94.4%	0.0%	2.4%	2.0%	1.2%
Sex NonViolent	353	5.4	3.9	16.7%	0.0%	49.9%	2.0%	31.4%
All Others	1981	4.5	1.1	86.2%	0.0%	10.3%	0.8%	2.7%
Grand Total	16511	5.7	2.0	0.0%	0.0%	0.0%	0.0%	0.0%

2017	Total Releases	Avg. * Length of Sent. (Yrs.)	Avg.* Time Served (Yrs.)	Release Types				
				GTPS**	GT***	Fullterm	Parole****	Other*****
Violent Crimes	3229	9.0	4.7	76.8%	0.1%	13.8%	3.2%	6.1%
Property Crimes	6254	5.1	1.4	95.8%	0.0%	2.2%	0.9%	1.1%
Drug Crimes	6172	5.8	1.7	94.5%	0.0%	2.3%	1.9%	1.3%
Sex NonViolent	370	5.9	4.2	15.4%	0.0%	51.9%	1.6%	31.1%
All Others	2077	5.1	1.3	88.4%	0.0%	8.9%	0.4%	2.3%
Grand Total	18102	6.1	2.1	0.0%	0.0%	0.0%	0.0%	0.0%

* Offenders may have multiple convictions at the time of commitment; this data represents cumulative sentences at time for all convictions. Life & death sentences are computed as 99 yrs. for sentence averages. This is average sentence length only of those released and does not include inmates remaining in prison.

** Goodtime/parole supervision (diminution of sentence).

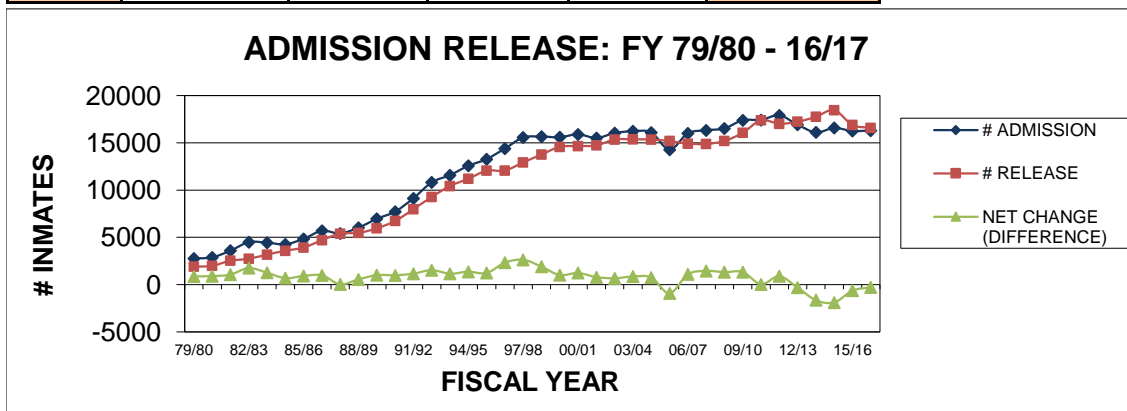
*** Goodtime; inmates sentenced prior to 1972.

**** Represents Parole Board actions.

***** Includes conviction overturns, court orders, death, and release to probation on a split sentence.

DEPARTMENT OF PUBLIC SAFETY AND CORRECTIONS ADMISSIONS/RELEASES COMPARISON FY 79/80 - CURRENT

FISCAL YEAR	# ADMISSION	% CHANGE	# RELEASE	% CHANGE	NET CHANGE (DIFFERENCE)
79/80	2771		1896		875
80/81	2887	4.19%	1987	4.80%	900
81/82	3596	24.56%	2531	27.38%	1065
82/83	4490	24.86%	2736	8.10%	1754
83/84	4444	-1.02%	3184	16.37%	1260
84/85	4272	-3.87%	3588	12.69%	684
85/86	4849	13.51%	3926	9.42%	923
86/87	5693	17.41%	4704	19.82%	989
87/88	5421	-4.78%	5395	14.69%	26
88/89	6033	11.29%	5474	1.46%	559
89/90	6965	15.45%	5957	8.82%	1008
90/91	7728	10.95%	6738	13.11%	990
91/92	9138	18.25%	7973	18.33%	1165
92/93	10819	18.40%	9284	16.44%	1535
93/94	11588	7.11%	10433	12.38%	1155
94/95	12568	8.46%	11200	7.35%	1368
95/96	13281	5.67%	12050	7.59%	1231
96/97	14395	8.39%	12070	0.17%	2325
97/98	15567	8.14%	12934	7.16%	2633
98/99	15663	0.62%	13764	6.42%	1899
99/00	15590	-0.47%	14576	5.90%	1014
00/01	15900	1.99%	14664	0.60%	1236
01/02	15519	-2.40%	14725	0.42%	794
02/03	16033	3.31%	15352	4.26%	681
03/04	16234	1.25%	15373	0.14%	861
04/05	16098	-0.84%	15343	-0.20%	755
05/06	14279	-11.30%	15197	-0.95%	-918
06/07	16011	12.13%	14913	-1.87%	1098
07/08	16334	2.02%	14879	-0.23%	1455
08/09	16525	1.17%	15198	2.14%	1327
09/10	17396	5.27%	16059	5.67%	1337
10/11	17428	0.18%	17384	8.25%	44
11/12	17913	2.78%	17020	-2.09%	893
12/13	16916	-5.57%	17231	1.24%	-315
13/14	16106	-4.79%	17752	3.02%	-1646
14/15	16572	2.89%	18457	3.97%	-1885
15/16	16252	-1.93%	16886	-8.51%	-634
16/17	16303	0.31%	16575	-1.84%	-272
TOTAL	455577		425408		30169
AVG					1069.37



DEPARTMENT OF PUBLIC SAFETY AND CORRECTIONS ADMISSIONS/RELEASES COMPARISON CY 1994-Current

CALENDAR YEAR	# ADMISSION	% CHANGE	# RELEASE	% CHANGE	NET CHANGE (DIFFERENCE)
1994	12064		10637		1427
1995	12628	4.68%	11527	8.37%	1101
1996	13530	7.14%	11837	2.69%	1693
1997	15056	11.28%	12495	5.56%	2561
1998	15628	3.80%	13248	6.03%	2380
1999	15361	-1.71%	14351	8.33%	1010
2000	16046	4.46%	14580	1.60%	1466
2001	15573	-2.95%	14768	1.29%	805
2002	15548	-0.16%	15054	1.94%	494
2003	16133	3.76%	15296	1.61%	837
2004	16025	-0.67%	15401	0.69%	624
2005	15006	-6.36%	15365	-0.23%	-359
2006	15401	2.63%	14958	-2.65%	443
2007	16309	5.90%	14875	-0.55%	1434
2008	16295	-0.09%	15032	1.06%	1263
2009	17237	5.78%	15214	1.21%	2023
2010	17187	-0.29%	17295	13.68%	-108
2011	17511	1.89%	17018	-1.60%	493
2012	17552	0.23%	17122	0.61%	430
2013	17053	-2.84%	17690	3.32%	-637
2014	16543	-3.08%	17972	1.59%	-1429
2015	16431	-0.68%	17850	-0.68%	-1419
2016	16278	-0.94%	16545	-7.31%	-267
2017	16431	0.93%	18102	9.41%	-1671
TOTAL	378826		364232		14594
AVG					944.89

