

**DEPARTMENT OF PUBLIC SAFETY AND CORRECTIONS**  
**POPULATION TRENDS - RAW DATA**  
**1989 - 2015**

YEAR		STATE FACILITIES	LOCAL FACILITIES	CONTRACT TWP	TOTAL CUSTODY POPULATION			Cause of Significant Change
1989	JAN	12139	4110		16249			
	FEB	12108	3811		15919	-330	-2.03%	
	MAR	12152	3826		15978	59	0.37%	
	APR	12168	3996		16164	186	1.16%	
	MAY	12183	4102		16285	121	0.75%	
	JUN	12256	4233		16489	204	1.25%	Avoyelles Corr. Opens
	JUL	12253	4309		16562	73	0.44%	
	AUG	12439	4037		16476	-86	-0.52%	
	SEP	12989	3791		16780	304	1.85%	
	OCT	13067	3893		16960	180	1.07%	
	NOV	13195	3977		17172	212	1.25%	
	DEC	13190	4078		17268	96	0.56%	
1990	JAN	13176	4153		17329	61	0.35%	
	FEB	13230	4295		17525	196	1.13%	
	MAR	13263	4362		17625	100	0.57%	Winn Corr. Opens
	APR	13605	4154		17759	134	0.76%	
	MAY	13802	4194		17996	237	1.33%	
	JUN	13861	4305		18166	170	0.94%	
	JUL	13881	4466		18347	181	1.00%	
	AUG	13858	4494		18352	5	0.03%	
	SEP	13865	4588		18453	101	0.55%	
	OCT	13910	4710		18620	167	0.91%	
	NOV	14009	4689		18698	78	0.42%	
	DEC	14079	4720		18799	101	0.54%	Allen Corr. Opens
1991	JAN	14298	4334		18632	-167	-0.89%	
	FEB	14403	4319		18722	90	0.48%	
	MAR	14504	4264		18768	46	0.25%	
	APR	14605	4247		18852	84	0.45%	
	MAY	14670	4270		18940	88	0.47%	
	JUN	14771	4281		19052	112	0.59%	
	JUL	14806	4326		19132	80	0.42%	Perdiem inc. to \$21/day
	AUG	14778	4431		19209	77	0.40%	
	SEP	14732	4585		19317	108	0.56%	
	OCT	14844	4857		19701	384	1.99%	
	NOV	14882	4976		19858	157	0.80%	
	DEC	14970	5047		20017	159	0.80%	
1992	JAN	14975	5011		19986	-31	-0.15%	
	FEB	15036	5256		20292	306	1.53%	
	MAR	15063	5312		20375	83	0.41%	
	APR	15112	5233		20345	-30	-0.15%	
	MAY	15088	5369		20457	112	0.55%	
	JUN	15114	5454		20568	111	0.54%	
	JUL	15097	5351		20448	-120	-0.58%	DOC begins prison expansion
	AUG	15270	5279		20549	101	0.49%	
	SEP	15486	5059		20545	-4	-0.02%	
	OCT	15740	4952		20692	147	0.72%	
	NOV	15968	4975		20943	251	1.21%	
	DEC	16152	4855		21007	64	0.31%	

YEAR		STATE FACILITIES	LOCAL FACILITIES	CONTRACT TWP	TOTAL CUSTODY POPULATION			Cause of Significant Change
1993	JAN	16233	4663		20896	-111	-0.53%	
	FEB	16383	4647		21030	134	0.64%	
	MAR	16502	4739		21241	211	1.00%	
	APR	16385	5065		21450	209	0.98%	
	MAY	16362	5170		21532	82	0.38%	
	JUN	16459	5291		21750	218	1.01%	
	JUL	16464	5452		21916	166	0.76%	
	AUG	16288	5799		22087	171	0.78%	LSP Camps A & H closed
	SEP	16075	6098		22173	86	0.39%	
	OCT	16144	6277		22421	248	1.12%	
	NOV	16181	6458		22639	218	0.97%	
	DEC	16141	6422		22563	-76	-0.34%	
1994	JAN	16142	6390		22532	-31	-0.14%	
	FEB	16197	6664		22861	329	1.46%	
	MAR	16229	6703		22932	71	0.31%	
	APR	16283	6818		23101	169	0.74%	
	MAY	16300	6889		23189	88	0.38%	
	JUN	16224	7099		23323	134	0.58%	
	JUL	16241	7115		23356	33	0.14%	
	AUG	16281	7326		23607	251	1.07%	
	SEP	16132	7445		23577	-30	-0.13%	
	OCT	16140	7766		23906	329	1.40%	
	NOV	16093	8038		24131	225	0.94%	
	DEC	16071	8149		24220	89	0.37%	
1995	JAN	16018	8081		24099	-121	-0.50%	
	FEB	16225	8228		24453	354	1.47%	
	MAR	16203	8243		24446	-7	-0.03%	
	APR	16184	8318		24502	56	0.23%	
	MAY	16166	8604		24770	268	1.09%	
	JUN	16266	8601		24867	97	0.39%	
	JUL	16234	8770		25004	137	0.55%	
	AUG	16383	8751		25134	130	0.52%	ALC, AVC, WNC operational capacities inc. to 1474 ea.
	SEP	16497	8741		25238	104	0.41%	
	OCT	16803	8799		25602	364	1.44%	
	NOV	16986	8683		25669	67	0.26%	
	DEC	17077	8600		25677	8	0.03%	
1996	JAN	16975	8472		25447	-230	-0.90%	
	FEB	17246	8480		25726	279	1.10%	
	MAR	17407	8471		25878	152	0.59%	
	APR	17539	8682		26221	343	1.33%	
	MAY	17470	8786		26256	35	0.13%	
	JUN	17535	8752		26287	31	0.12%	
	JUL	17516	8914		26430	143	0.54%	
	AUG	17532	8913		26445	15	0.06%	
	SEP	17553	8951		26504	59	0.22%	
	OCT	17600	9012		26612	108	0.41%	
	NOV	17630	9264		26894	282	1.06%	
	DEC	17635	9364		26999	105	0.39%	

YEAR		STATE FACILITIES	LOCAL FACILITIES	CONTRACT TWP	TOTAL CUSTODY POPULATION		Cause of Significant Change
1997	JAN	17597	9256		26853	-146	-0.54%
	FEB	17838	9243		27081	228	0.85%
	MAR	17857	9587		27444	363	1.34%
	APR	17797	9984		27781	337	1.23%
	MAY	17727	10305		28032	251	0.90%
	JUN	17856	10353		28209	177	0.63%
	JUL	18014	10540		28554	345	1.22%
	AUG	18174	10677		28851	297	1.04%
	SEP	18384	10702		29086	235	0.81%
	OCT	18519	10763		29282	196	0.67%
	NOV	18529	10868		29397	115	0.39%
	DEC	18470	10795		29265	-132	-0.45%
1998	JAN	18559	10784		29343	78	0.27%
	FEB	18554	11294		29848	505	1.72%
	MAR	18565	11517		30082	234	0.78%
	APR	18606	11717		30323	241	0.80%
	MAY	18616	11825		30441	118	0.39%
	JUN	18679	12228		30907	466	1.53%
	JUL	18705	12419		31124	217	0.70%
	AUG	18819	12500		31319	195	0.63%
	SEP	18880	12701		31581	262	0.84%
	OCT	19001	12976		31977	396	1.25%
	NOV	19004	13267		32271	294	0.92%
	DEC	19016	13211		32227	-44	-0.14%
1999	JAN	19053	13364		32417	32417	#DIV/0!
	FEB	19072	13364		32436	19	0.06%
	MAR	19259	13214		32473	37	0.11%
	APR	19350	13380		32730	257	0.79%
	MAY	19129	13897		33026	296	0.90%
	JUN	19320	14099		33419	393	1.19%
	JUL	19320	14099		33419	0	0.00%
	AUG	19239	14170		33409	-10	-0.03%
	SEP	19278	14365		33643	234	0.70%
	OCT	19281	14409		33690	47	0.14%
	NOV	19267	14649		33916	226	0.67%
	DEC	19174	14838		34012	96	0.28%
2000	JAN	19292	14671		33963	-49	-0.14%
	FEB	19325	15081		34406	443	1.30%
	MAR	19406	15300		34706	300	0.87%
	APR	19403	15158		34561	-145	-0.42%
	MAY	19259	15259		34518	-43	-0.12%
	JUN	19510	15194		34704	186	0.54%
	JUL	19541	15027		34568	-136	-0.39%
	AUG	19443	15285		34728	160	0.46%
	SEP	19478	15412		34890	162	0.47%
	OCT	19440	15596		35036	146	0.42%
	NOV	19515	15596		35111	75	0.21%
	DEC	19450	15504		34954	-157	-0.45%

YEAR		STATE FACILITIES	LOCAL FACILITIES	CONTRACT TWP	TOTAL CUSTODY POPULATION			Cause of Significant Change
2001	JAN	19476	15397		34873	-81	-0.23%	
	FEB	19651	15537		35188	315	0.90%	
	MAR	19611	15559		35170	-18	-0.05%	
	APR	19543	15742		35285	115	0.33%	
	MAY	19534	15776		35310	25	0.07%	
	JUN	19528	15901		35429	119	0.34%	
	JUL	19663	15670		35333	-96	-0.27%	
	AUG	19603	15707		35310	-23	-0.07%	
	SEP	19604	15825		35429	119	0.34%	
	OCT	19929	16063		35992	563	1.59%	
	NOV	19929	15995		35924	-68	-0.19%	
	DEC	19949	15874		35823	-101	-0.28%	
2002	JAN	19547	16114		35661	-162	-0.45%	
	FEB	19587	16063		35650	-11	-0.03%	
	MAR	19601	16138		35739	89	0.25%	
	APR	19593	16162		35755	16	0.04%	
	MAY	19593	16219		35812	57	0.16%	
	JUN	19593	16242		35835	23	0.06%	
	JUL	19907	16252		36159	324	0.90%	
	AUG	19911	16251		36162	3	0.01%	
	SEP	19911	16215		36126	-36	-0.10%	
	OCT	19927	16145		36072	-54	-0.15%	
	NOV	19830	15973		35803	-269	-0.75%	
	DEC	19830	16048		35878	75	0.21%	
2003	JAN	19547	15927		35474	-404	-1.13%	
	FEB	19587	16029		35616	142	0.40%	
	MAR	19601	16050		35651	35	0.10%	
	APR	19593	16222		35815	164	0.46%	
	MAY	19639	16248		35887	72	0.20%	
	JUN	19575	16321		35896	9	0.03%	
	JUL	19509	16512		36021	125	0.35%	
	AUG	19504	16525		36029	8	0.02%	
	SEP	19425	16782		36207	178	0.49%	
	OCT	19405	16798		36203	-4	-0.01%	
	NOV	19403	16726		36129	-74	-0.20%	
	DEC	19318	16547		35865	-264	-0.73%	
2004	JAN	19326	16559		35885	20	0.06%	Due to Hurricanes Katrina (8/29/05) and Rita(9/24/05), evacuees were taken into our population.
	FEB	19321	16569		35890	5	0.01%	Aug '05: Of the 25,378 in state facilities, 3,814 are Pre-trial Non-state offenders/arrestees
	MAR	19393	16776		36169	279	0.78%	Aug '05: Of the 16,819 in local facilities, 1309 are Pre-trial Non-state offenders/arrestees
	APR	19530	16886		36416	247	0.68%	Sep '05: Of the 25,437 in state facilities, 920 are physically located in Bureau of Prisons in Florida; 4,298 are Pre-trial Non-state offenders/arrestees
	MAY	19457	17152		36609	193	0.53%	Sep '05: Of the 17,953 in local facilities, 1,655 are Pre-trial Non-state offenders/arrestees
	JUN	19381	17147		36528	-81	-0.22%	Oct '05: Of the 23,045 in state facilities, 777 are physically located in Bureau of Prisons in Florida; 2,771 are Pre-trial Non-state offenders/arrestees
	JUL	19365	17110		36475	-53	-0.15%	
	AUG	19321	17265		36586	111	0.30%	Oct '05: Of the 17,558 in local facilities, 1,396 are Pre-trial Non-state offenders/arrestees
	SEP	19400	17164		36564	-22	-0.06%	Nov '05: Of the 22,065 in state facilities, 579 are physically located in Bureau of Prisons in Florida
	OCT	19341	17409		36750	186	0.51%	2,084 are Pre-trial Non-state offenders/arrestees
	NOV	19276	17422		36698	-52	-0.14%	Nov '05: Of the 17,581 in local facilities, 1,474 are Pre-trial Non-state offenders/arrestees
	DEC	19265	17269		36534	-164	-0.45%	Dec '05: Of the 21,583 in state facilities, 529 are physically located in Bureau of Prisons in Florida 1,682 are Pre-trial Non-state offenders/arrestees Dec '05: Of the 17,456 in local facilities, 1,422 are Pre-trial Non-state offenders/arrestees

YEAR		STATE FACILITIES	LOCAL FACILITIES	CONTRACT TWP	TOTAL CUSTODY POPULATION			Cause of Significant Change
2005	JAN	19300	17066		36366	-168	-0.46%	<b>Jan '06:</b> Of the 20,501 in state facilities, 289 are physically located in Bureau of Prisons in Florida 703 are Pre-trial Non-state offenders/arrestees <b>Mar '06:</b> Of the 17,780 in local facilities, 1,838 are Pre-trial Non-state offenders/arrestees <b>Feb '06:</b> Of the 20,255 in state facilities, 532 are Pre-trial Non-state offenders/arrestees <b>Feb '06:</b> Of the 17,609 in local facilities, 1,475 are Pre-trial Non-state offenders/arrestees <b>Mar '06:</b> Of the 20,344 in state facilities, 753 are Pre-trial Non-state offenders/arrestees <b>Mar '06:</b> Of the 17,327 in local facilities, 1,347 are Pre-trial Non-state offenders/arrestees <b>Apr '06:</b> Of the 20,113 in state facilities, 474 are Pre-trial Non-state offenders/arrestees <b>Apr '06:</b> Of the 16,887 in local facilities, 1,010 are Pre-trial Non-state offenders/arrestees <b>May '06:</b> Of the 20,042 in state facilities, 320 are Pre-trial Non-state offender/arrestees <b>May '06:</b> Of the 16,525 in local facilities, 584 are Pre-trial Non-state offenders/arrestees <b>June '06:</b> Of the 20,341 in state facilities, 381 are Pre-trial Non-state offenders/arrestees <b>June '06:</b> Of the 16,182 in local facilities, 395 are Pre-trial Non-state offenders/arrestees <b>July '06:</b> Of the 20,396 in state facilities, 446 are Pre-trial Non-state offenders/arrestees <b>July '06:</b> Of the 16,112 in local facilities, 396 are Pre-trial Non-state offenders/arrestees <b>Aug '06:</b> Of the 20,554 in state facilities, 528 are Pre-trial Non-state offenders/arrestees <b>Aug '06:</b> Of the 16,044 in local facilities, 302 are Pre-trial Non-state offenders/arrestees <b>Sept '06:</b> Of the 20,539 in state facilities, 513 are Pre-trial Non-state offenders/arrestees <b>Sept '06:</b> Of the 16,171 in local facilities, 209 are Pre-trial Non-state offenders/arrestees <b>Oct '06:</b> Of the 20,799 in state facilities, 641 are Pre-trial Non-state Offenders/arrestees <b>Oct '06:</b> Of the 16,285 in local facilities, 117 are Pre-trial Non-state offenders/arrestees <b>Nov '06:</b> Of the 20,852 in state facilities, 624 are Pre-trial Non-state Offenders/arrestees <b>Nov '06:</b> Of the 16,268 in local facilities, 93 are Pre-trial Non-state offenders/arrestees <b>Dec '06:</b> Of the 20,815 in state facilities, 572 are Pre-trial Non-state offenders/arrestees <b>Dec '06:</b> Of the 15,995 in local facilities, 64 are Pre-trial Non-state offenders/arrestees <b>Jan '07:</b> Of the 20,580 in state facilities, 270 are Pre-trial Non-state offenders/arrestees <b>Jan '07:</b> Of the 15,901 in local facilities, 39 are Pre-trial Non-state offenders/arrestees <b>Feb '07:</b> Of the 20,577 in state facilities, 213 are Pre-trial Non-state offender/arrestees <b>Feb '07:</b> Of the 15,942 in local facilities, 13 are Pre-trial Non-state offenders/arrestees <b>Mar '07:</b> Of the 20,596 in state facilities, 178 are Pre-trial Non-state offenders/arrestees <b>Mar '07:</b> Of the 16,066 in local facilities, 13 are Pre-trial Non-state offenders/arrestees <b>Apr '07:</b> Of the 20,795 in state facilities, 231 are Pre-trial Non-state offenders/arrestees <b>Apr '07:</b> Of the 16,093 in local facilities, 1 is a Pre-trial Non-state offender/arrestee <b>May '07:</b> Of the 20,772 in state facilities, 217 are Pre-trial Non-state offenders/arrestees <b>May '07:</b> Of the 16,097 in local facilities, 1 is a Pre-trial Non-state offender/arrestee <b>June '07:</b> Of the 20,869 in state facilities, 203 are Pre-trial Non-state offenders/arrestees <b>June '07:</b> Of the 16,121 in local facilities, 1 is a Pre-trial Non-state offender/arrestee <b>July '07:</b> Of the 20,790 in state facilities, 214 are Pre-trial Non-state offenders/arrestees <b>July '07:</b> Of the 16,335 in local facilities, 1 is a Pre-trial Non-state offender/arrestee <b>Aug '07:</b> Of the 20,750 in state facilities, 181 are Pre-trial Non-state offenders/arrestees <b>Aug '07:</b> Of the 16,625 in local facilities, 1 is a Pre-trial Non-state offender/arrestee <b>Sep '07:</b> Of the 20,750 in state facilities, 181 are Pre-trial Non-state offenders/arrestees <b>Sep '07:</b> Of the 16,625 in local facilities, 1 is a Pre-trial Non-state offender/arrestee <b>Oct '07:</b> Of the 20,600 in state facilities, 173 are Pre-trial Non-state offenders/arrestees <b>Oct '07:</b> Of the 17,051 in local facilities, 1 is a Pre-trial Non-state offender/arrestee <b>Nov '07:</b> Of the 20,632 in state facilities, 217 are Pre-trial Non-state offenders/arrestees <b>Nov '07:</b> Of the 17,000 in local facilities, 1 is a Pre-trial Non-state offender/arrestee <b>Dec '07:</b> Of the 20,461 in state facilities, 198 are Pre-trial Non-state offenders/arrestees <b>Dec '07:</b> Of the 17,034 in local facilities, 1 is a Pre-trial Non-state offender/arrestee <b>Jan '08:</b> Of the 20,507 in state facilities, 199 are physically located in Bureau of Prisons in Florida <b>Jan '08:</b> Of the 17,060 in local facilities, 1 is a Pre-trial Non-state offenders/arrestees <b>Feb '08:</b> Of the 20,575 in state facilities, 200 are Pre-trial Non-state offenders/arrestees <b>Feb '08:</b> Of the 17,024 in local facilities, 1 is a Pre-trial Non-state offenders/arrestees <b>Mar '08:</b> Of the 20,537 in state facilities, 144 are Pre-trial Non-state offenders/arrestees <b>Mar '08:</b> As of this month, local facilities are no longer housing Pre-trial Non-state offenders/arrestees <b>Apr '08:</b> Of the 20,671 in state facilities, 200 are Pre-trial Non-state offenders/arrestees <b>May '08:</b> Of the 20,644 in state facilities, 152 are Pre-trial Non-state offenders/arrestees <b>June '08:</b> Of the 20,622 in state facilities, 307 are Pre-trial Non-state offenders/arrestees <b>July '08:</b> Of the 20,782 in state facilities, 183 are Pre-trial Non-state offenders/arrestees
	FEB	19439	17378		36817	451	1.24%	
	MAR	19569	17327		36896	79	0.21%	
	APR	19435	17431		36866	-30	-0.08%	
	MAY	19484	17708		37192	326	0.88%	
	JUN	19591	17645		37236	44	0.12%	
	JUL	19589	17685		37274	38	0.10%	
	AUG	25378	16819		42197	4923	13.21%	
	SEP	25437	17953		43390	1193	2.83%	
	OCT	23045	17558		40603	-2787	-6.42%	
	NOV	22065	17581		39646	-957	-2.36%	
	DEC	21583	17456		39039	-607	-1.53%	
2006	JAN	20501	17780		38281	-758	-1.94%	<b>Feb '07:</b> Of the 15,942 in local facilities, 13 are Pre-trial Non-state offenders/arrestees <b>Mar '07:</b> Of the 20,596 in state facilities, 178 are Pre-trial Non-state offenders/arrestees <b>Mar '07:</b> Of the 16,066 in local facilities, 13 are Pre-trial Non-state offenders/arrestees <b>Apr '07:</b> Of the 20,795 in state facilities, 231 are Pre-trial Non-state offenders/arrestees <b>Apr '07:</b> Of the 16,093 in local facilities, 1 is a Pre-trial Non-state offender/arrestee <b>May '07:</b> Of the 20,772 in state facilities, 217 are Pre-trial Non-state offenders/arrestees <b>May '07:</b> Of the 16,097 in local facilities, 1 is a Pre-trial Non-state offender/arrestee <b>June '07:</b> Of the 20,869 in state facilities, 203 are Pre-trial Non-state offenders/arrestees <b>June '07:</b> Of the 16,121 in local facilities, 1 is a Pre-trial Non-state offender/arrestee <b>July '07:</b> Of the 20,790 in state facilities, 214 are Pre-trial Non-state offenders/arrestees <b>July '07:</b> Of the 16,335 in local facilities, 1 is a Pre-trial Non-state offender/arrestee <b>Aug '07:</b> Of the 20,750 in state facilities, 181 are Pre-trial Non-state offenders/arrestees <b>Aug '07:</b> Of the 16,625 in local facilities, 1 is a Pre-trial Non-state offender/arrestee <b>Sep '07:</b> Of the 20,750 in state facilities, 181 are Pre-trial Non-state offenders/arrestees <b>Sep '07:</b> Of the 16,625 in local facilities, 1 is a Pre-trial Non-state offender/arrestee <b>Oct '07:</b> Of the 20,600 in state facilities, 173 are Pre-trial Non-state offenders/arrestees <b>Oct '07:</b> Of the 17,051 in local facilities, 1 is a Pre-trial Non-state offender/arrestee <b>Nov '07:</b> Of the 20,632 in state facilities, 217 are Pre-trial Non-state offenders/arrestees <b>Nov '07:</b> Of the 17,000 in local facilities, 1 is a Pre-trial Non-state offender/arrestee <b>Dec '07:</b> Of the 20,461 in state facilities, 198 are Pre-trial Non-state offenders/arrestees <b>Dec '07:</b> Of the 17,034 in local facilities, 1 is a Pre-trial Non-state offender/arrestee <b>Jan '08:</b> Of the 20,507 in state facilities, 199 are physically located in Bureau of Prisons in Florida <b>Jan '08:</b> Of the 17,060 in local facilities, 1 is a Pre-trial Non-state offenders/arrestees <b>Feb '08:</b> Of the 20,575 in state facilities, 200 are Pre-trial Non-state offenders/arrestees <b>Feb '08:</b> Of the 17,024 in local facilities, 1 is a Pre-trial Non-state offenders/arrestees <b>Mar '08:</b> Of the 20,537 in state facilities, 144 are Pre-trial Non-state offenders/arrestees <b>Mar '08:</b> As of this month, local facilities are no longer housing Pre-trial Non-state offenders/arrestees <b>Apr '08:</b> Of the 20,671 in state facilities, 200 are Pre-trial Non-state offenders/arrestees <b>May '08:</b> Of the 20,644 in state facilities, 152 are Pre-trial Non-state offenders/arrestees <b>June '08:</b> Of the 20,622 in state facilities, 307 are Pre-trial Non-state offenders/arrestees <b>July '08:</b> Of the 20,782 in state facilities, 183 are Pre-trial Non-state offenders/arrestees
	FEB	20255	17609		37864	-417	-1.09%	
	MAR	20344	17327		37671	-193	-0.51%	
	APR	20113	16887		37000	-671	-1.78%	
	MAY	20042	16525		36567	-433	-1.17%	
	JUN	20341	16182		36523	-44	-0.12%	
	JUL	20396	16112		36508	-15	-0.04%	
	AUG	20554	16044		36598	90	0.25%	
	SEP	20539	16171		36710	112	0.31%	
	OCT	20799	16285		37084	374	1.02%	
	NOV	20852	16268		37120	36	0.10%	
	DEC	20815	15995		36810	-310	-0.84%	
2007	JAN	20580	15901		36481	36481	#DIV/0!	<b>Mar '07:</b> Of the 20,596 in state facilities, 178 are Pre-trial Non-state offenders/arrestees <b>Mar '07:</b> Of the 16,066 in local facilities, 13 are Pre-trial Non-state offenders/arrestees <b>Apr '07:</b> Of the 20,795 in state facilities, 231 are Pre-trial Non-state offenders/arrestees <b>Apr '07:</b> Of the 16,093 in local facilities, 1 is a Pre-trial Non-state offender/arrestee <b>May '07:</b> Of the 20,772 in state facilities, 217 are Pre-trial Non-state offenders/arrestees <b>May '07:</b> Of the 16,097 in local facilities, 1 is a Pre-trial Non-state offender/arrestee <b>June '07:</b> Of the 20,869 in state facilities, 203 are Pre-trial Non-state offenders/arrestees <b>June '07:</b> Of the 16,121 in local facilities, 1 is a Pre-trial Non-state offender/arrestee <b>July '07:</b> Of the 20,790 in state facilities, 214 are Pre-trial Non-state offenders/arrestees <b>July '07:</b> Of the 16,335 in local facilities, 1 is a Pre-trial Non-state offender/arrestee <b>Aug '07:</b> Of the 20,750 in state facilities, 181 are Pre-trial Non-state offenders/arrestees <b>Aug '07:</b> Of the 16,625 in local facilities, 1 is a Pre-trial Non-state offender/arrestee <b>Sep '07:</b> Of the 20,750 in state facilities, 181 are Pre-trial Non-state offenders/arrestees <b>Sep '07:</b> Of the 16,625 in local facilities, 1 is a Pre-trial Non-state offender/arrestee <b>Oct '07:</b> Of the 20,600 in state facilities, 173 are Pre-trial Non-state offenders/arrestees <b>Oct '07:</b> Of the 17,051 in local facilities, 1 is a Pre-trial Non-state offender/arrestee <b>Nov '07:</b> Of the 20,632 in state facilities, 217 are Pre-trial Non-state offenders/arrestees <b>Nov '07:</b> Of the 17,000 in local facilities, 1 is a Pre-trial Non-state offender/arrestee <b>Dec '07:</b> Of the 20,461 in state facilities, 198 are Pre-trial Non-state offenders/arrestees <b>Dec '07:</b> Of the 17,034 in local facilities, 1 is a Pre-trial Non-state offender/arrestee <b>Jan '08:</b> Of the 20,507 in state facilities, 199 are physically located in Bureau of Prisons in Florida <b>Jan '08:</b> Of the 17,060 in local facilities, 1 is a Pre-trial Non-state offenders/arrestees <b>Feb '08:</b> Of the 20,575 in state facilities, 200 are Pre-trial Non-state offenders/arrestees <b>Feb '08:</b> Of the 17,024 in local facilities, 1 is a Pre-trial Non-state offenders/arrestees <b>Mar '08:</b> Of the 20,537 in state facilities, 144 are Pre-trial Non-state offenders/arrestees <b>Mar '08:</b> As of this month, local facilities are no longer housing Pre-trial Non-state offenders/arrestees <b>Apr '08:</b> Of the 20,671 in state facilities, 200 are Pre-trial Non-state offenders/arrestees <b>May '08:</b> Of the 20,644 in state facilities, 152 are Pre-trial Non-state offenders/arrestees <b>June '08:</b> Of the 20,622 in state facilities, 307 are Pre-trial Non-state offenders/arrestees <b>July '08:</b> Of the 20,782 in state facilities, 183 are Pre-trial Non-state offenders/arrestees
	FEB	20577	15942		36519	38	0.10%	
	MAR	20596	16066		36662	143	0.39%	
	APR	20795	16093		36888	226	0.62%	
	MAY	20772	16097		36869	-19	-0.05%	
	JUN	20,869	16121		36990	121	0.33%	
	JUL	20790	16,335		37125	135	0.36%	
	AUG	20750	16625		37375	250	0.67%	
	SEP	20700	16665		37365	-10	-0.03%	
	OCT	20600	17051		37651	286	0.77%	
	NOV	20632	17000		37632	-19	-0.05%	
	DEC	20461	17035		37496	-136	-0.36%	
2008	JAN	20507	17060		37567	71	0.19%	<b>Mar '07:</b> Of the 20,596 in state facilities, 178 are Pre-trial Non-state offenders/arrestees <b>Mar '07:</b> Of the 16,066 in local facilities, 13 are Pre-trial Non-state offenders/arrestees <b>Apr '07:</b> Of the 20,795 in state facilities, 231 are Pre-trial Non-state offenders/arrestees <b>Apr '07:</b> Of the 16,093 in local facilities, 1 is a Pre-trial Non-state offender/arrestee <b>May '07:</b> Of the 20,772 in state facilities, 217 are Pre-trial Non-state offenders/arrestees <b>May '07:</b> Of the 16,097 in local facilities, 1 is a Pre-trial Non-state offender/arrestee <b>June '07:</b> Of the 20,869 in state facilities, 203 are Pre-trial Non-state offenders/arrestees <b>June '07:</b> Of the 16,121 in local facilities, 1 is a Pre-trial Non-state offender/arrestee <b>July '07:</b> Of the 20,790 in state facilities, 214 are Pre-trial Non-state offenders/arrestees <b>July '07:</b> Of the 16,335 in local facilities, 1 is a Pre-trial Non-state offender/arrestee <b>Aug '07:</b> Of the 20,750 in state facilities, 181 are Pre-trial Non-state offenders/arrestees <b>Aug '07:</b> Of the 16,625 in local facilities, 1 is a Pre-trial Non-state offender/arrestee <b>Sep '07:</b> Of the 20,750 in state facilities, 181 are Pre-trial Non-state offenders/arrestees <b>Sep '07:</b> Of the 16,625 in local facilities, 1 is a Pre-trial Non-state offender/arrestee <b>Oct '07:</b> Of the 20,600 in state facilities, 173 are Pre-trial Non-state offenders/arrestees <b>Oct '07:</b> Of the 17,051 in local facilities, 1 is a Pre-trial Non-state offender/arrestee <b>Nov '07:</b> Of the 20,632 in state facilities, 217 are Pre-trial Non-state offenders/arrestees <b>Nov '07:</b> Of the 17,000 in local facilities, 1 is a Pre-trial Non-state offender/arrestee <b>Dec '07:</b> Of the 20,461 in state facilities, 198 are Pre-trial Non-state offenders/arrestees <b>Dec '07:</b> Of the 17,034 in local facilities, 1 is a Pre-trial Non-state offender/arrestee <b>Jan '08:</b> Of the 20,507 in state facilities, 199 are physically located in Bureau of Prisons in Florida <b>Jan '08:</b> Of the 17,060 in local facilities, 1 is a Pre-trial Non-state offenders/arrestees <b>Feb '08:</b> Of the 20,575 in state facilities, 200 are Pre-trial Non-state offenders/arrestees <b>Feb '08:</b> Of the 17,024 in local facilities, 1 is a Pre-trial Non-state offenders/arrestees <b>Mar '08:</b> Of the 20,537 in state facilities, 144 are Pre-trial Non-state offenders/arrestees <b>Mar '08:</b> As of this month, local facilities are no longer housing Pre-trial Non-state offenders/arrestees <b>Apr '08:</b> Of the 20,671 in state facilities, 200 are Pre-trial Non-state offenders/arrestees <b>May '08:</b> Of the 20,644 in state facilities, 152 are Pre-trial Non-state offenders/arrestees <b>June '08:</b> Of the 20,622 in state facilities, 307 are Pre-trial Non-state offenders/arrestees <b>July '08:</b> Of the 20,782 in state facilities, 183 are Pre-trial Non-state offenders/arrestees
	FEB	20575	17024		37599	32	0.09%	
	MAR	20537	17360		37897	298	0.79%	
	APR	20671	17168		37839	-58	-0.15%	
	MAY	20644	17322		37966	127	0.34%	
	JUN	20929	17347		38276	310	0.82%	
	JUL	20782	17,455		38237	-39	-0.10%	
	AUG	20887	17716		38603	366	0.96%	
	SEP	21673	17493		39166	563	1.46%	
	OCT	21199	17604		38803	-363	-0.93%	
	NOV	20997	17559		38556	-247	-0.64%	
	DEC	20857	17371		38228	-328	-0.85%	

YEAR		STATE FACILITIES	LOCAL FACILITIES	CONTRACT TWP	TOTAL CUSTODY POPULATION			Cause of Significant Change
2009	JAN	19698	17565	1111*	38374	38374	#DIV/0!	<b>Aug '08:</b> Of the 20,887 in state facilities, 193 are Pre-trial Non-state offenders/arrestees
	FEB	19802	17683	1110	38595	221	0.58%	<b>Sept '08:</b> Of the 21,673 in state facilities, 1,199 are Pre-trial Non-state offenders/arrestees
	MAR	19868	17988	1123	38979	384	0.99%	<b>Oct. '08:</b> Of the 21,199 in state facilities, 618 are Pre-trial Non-state offenders/arrestees
	APR	19266	18298	1161	38725	-254	-0.65%	<b>Nov. '08:</b> Of the 20,997 in state facilities, 615 are Pre-trial Non-state offenders/arrestees
	MAY	19252	18533	1129	38914	189	0.49%	<b>Dec. '08:</b> Of the 20,857 in state facilities, 577 are Pre-trial Non-state offenders/arrestees
	JUN	19301	18420	1065	38786	-128	-0.33%	Ending of George Washington University Projections
	JUL	19187	18723	1099	39009	223	0.57%	
	AUG	19003	19350	1091	39444	435	1.12%	
	SEP	19013	19634	1079	39726	282	0.71%	
	OCT	19003	19923	1038	39964	238	0.60%	
	NOV	19024	19869	1034	39927	-37	-0.09%	
	DEC	18896	19891	993	39780	-147	-0.37%	
2010	JAN	18774	20059	994	39827	47	0.12%	
	FEB	18697	20207	981	39885	58	0.15%	
	MAR	18868	20201	1007	40076	191	0.48%	
	APR	18928	20044	1016	39988	-88	-0.22%	
	MAY	18863	20122	995	39980	-8	-0.02%	
	JUN	18963	19827	1032	39822	-158	-0.40%	
	JUL	18973	19651	1055	39679	-143	-0.36%	
	AUG	18944	19865	1104	39913	234	0.59%	
	SEP	19103	19964	1126	40193	280	0.70%	
	OCT	19041	19675	1118	39834	-359	-0.89%	
	NOV	19070	19410	1138	39618	-216	-0.54%	
	DEC	19008	19287	1096	39391	-227	-0.57%	
2011	JAN	18983	19373	1120	39476	85	0.22%	
	FEB	18978	19460	1150	39588	112	0.28%	
	MAR	18896	19759	997	39652	64	0.16%	
	APR	18628	20016	1023	39667	15	0.04%	
	MAY	18137	20641	988	39766	99	0.25%	<b>May '11:</b> Threat of the flooding of the Mississippi River occurred on 5/9/11, LSP offenders were evacuated to other state facilities, therefore intakes from parish prisons were suspended for 7 weeks.
	JUN	17980	20709	994	39683	-83	-0.21%	
	JUL	18269	20335	1006	39610	-73	-0.18%	
	AUG	18690	20169	982	39841	231	0.58%	
	SEP	18779	20296	1004	40079	238	0.60%	
	OCT	18786	20334	1005	40125	46	0.11%	
	NOV	18843	20299	999	40141	16	0.04%	
	DEC	18843	19892	974	39709	-432	-1.08%	
2012	JAN	18825	20014	989	39828	119	0.30%	
	FEB	18818	20314	976	40108	280	0.70%	
	MAR	18765	20684	971	40420	312	0.78%	
	APR	18732	20630	959	40321	-99	-0.24%	
	MAY	18561	20988	989	40538	217	0.54%	
	JUN	18236	21230	994	40460	-78	-0.19%	
	JUL	18124	21257	1005	40386	-74	-0.18%	
	AUG	18236	21063	976	40275	-111	-0.27%	
	SEP	18271	21289	1008	40568	293	0.73%	
	OCT	18194	21317	1008	40519	-49	-0.12%	
	NOV	18216	21256	979	40451	-68	-0.17%	
	DEC	18599	20624	947	40170	-281	-0.69%	

\*Effective 1/1/09 Budgeted projections have been used and contract transitional work program was separated out from Statu

YEAR		STATE FACILITIES	LOCAL FACILITIES	CONTRACT TWP	TOTAL CUSTODY POPULATION			Cause of Significant Change
2013	JAN	18611	20466	962	40039	-131	-0.33%	
	FEB	18687	20446	963	40096	57	0.14%	
	MAR	18671	20413	941	40025	-71	-0.18%	
	APR	18666	20305	959	39930	-95	-0.24%	
	MAY	18604	20409	928	39941	11	0.03%	
	JUN	18703	20315	908	39926	-15	-0.04%	
	JUL	18870	19860	913	39643	-283	-0.71%	
	AUG	18828	19854	977	39659	16	0.04%	
	SEP	18894	19867	995	39756	97	0.24%	
	OCT	18837	19833	1022	39692	-64	-0.16%	
	NOV	18842	19693	1017	39552	-140	-0.35%	
	DEC	18913	19393	993	39299	-253	-0.64%	
2014	JAN	18923	19292	964	39179	39179	#DIV/0!	
	FEB	18992	19431	955	39378	199	0.51%	
	MAR	18802	19499	977	39278	-100	-0.25%	
	APR	18757	19429	957	39143	-135	-0.34%	
	MAY	18753	19531	950	39234	91	0.23%	
	JUN	18763	19366	933	39062	-172	-0.44%	
	JUL	18787	19301	935	39023	-39	-0.10%	
	AUG	18774	19475	963	39212	189	0.48%	
	SEP	18778	19491	942	39211	-1	0.00%	
	OCT	18853	19128	941	38922	-289	-0.74%	
	NOV	18900	18911	926	38737	-185	-0.48%	
	DEC	18787	18308	935	38030	-707	-1.83%	
2015	JAN	18767	18027	945	37739	-291	-0.77%	
	FEB	18611	17874	988	37473	-266	-0.70%	
	MAR	18601	18050	1000	37651	178	0.48%	
	APR	18247	18169	1036	37452	-199	-0.53%	
	MAY	18296	18086	1019	37401	-51	-0.14%	
	JUN	18256	18011	1033	37300	-101	-0.27%	
	JUL	18091	17794	1054	36939	-361	-0.97%	
	AUG	18093	17758	1059	36910	-29	-0.08%	
	SEP	18157	17653	1064	36874	-36	-0.10%	
	OCT	18321	17594	957	36872	-2	-0.01%	
	NOV	18425	17069	1101	36595	-277	-0.75%	
	DEC	18430	16877	1070	36377	-218	-0.60%	
2016	JAN	18,496	16973	1064	36533	156	0.43%	
	FEB	18,474	16977	1053	36504	-29	-0.08%	
	MAR	18,542	16872	1049	36463	-41	-0.11%	
	APR	18,622	16605	1027	36254	-209	-0.57%	
	MAY	18,567	16769	1054	36390	136	0.38%	
	JUN	18,612	16646	1022	36280	-110	-0.30%	
	JUL	15,314	19743	1065	36122	-158	-0.44%	Jul '16- ALC and WNC classed as local facilities
	AUG	14,230	20631	1034	35895	-227	-0.63%	Aug '16- Flooding caused evacuation of LCIW
	SEP	14,988	20238	969	36195	300	0.84%	
	OCT	15,095	20220	1020	36335	140	0.39%	
	NOV	15,174	19875	1008	36057	-278	-0.77%	
	DEC	15,162	19504	1016	35682	-375	-1.04%	

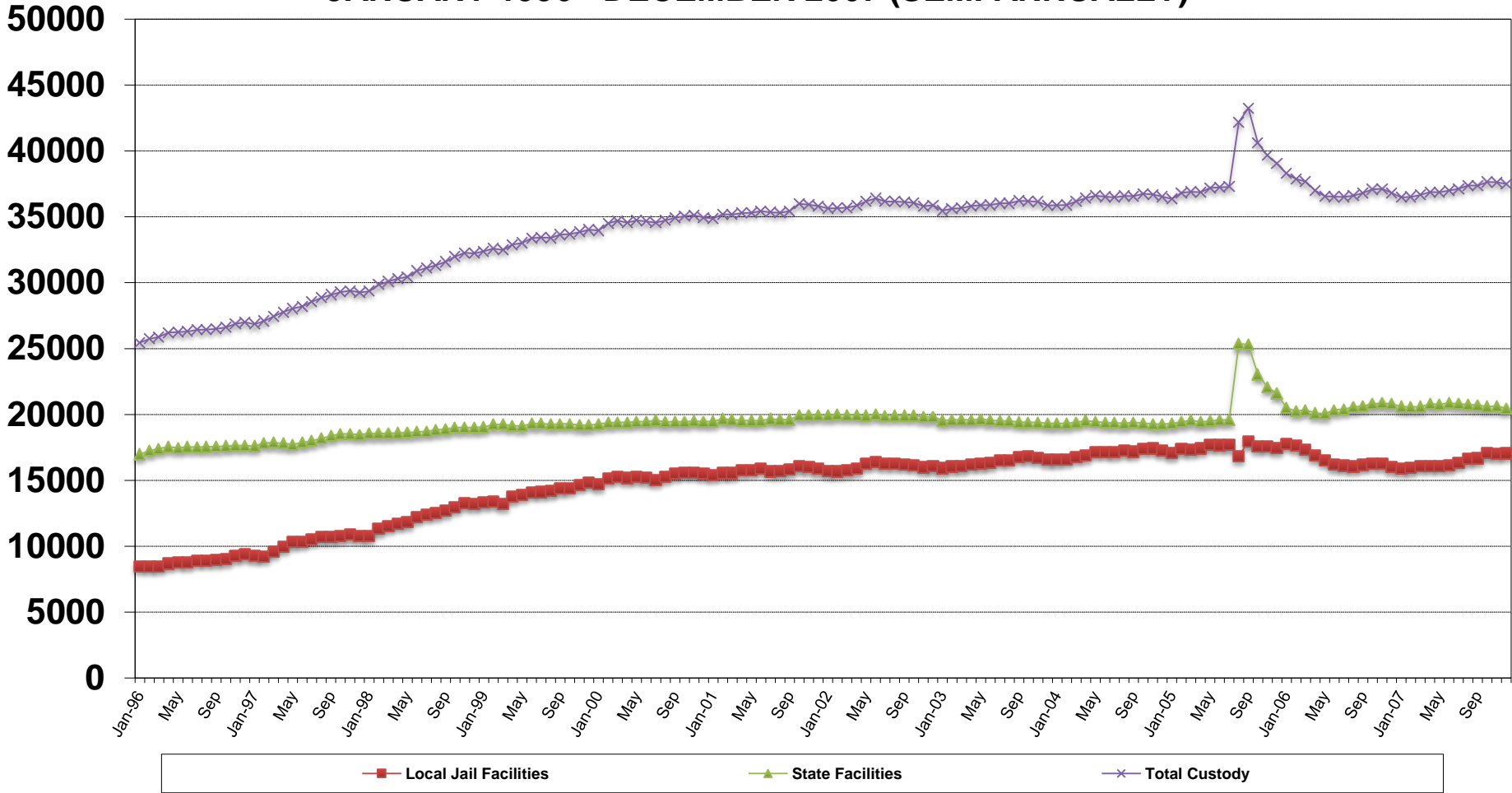
YEAR		STATE FACILITIES	LOCAL FACILITIES	CONTRACT TWP	TOTAL CUSTODY POPULATION			Cause of Significant Change
2017	JAN	15,191	19,549	962	35702	#VALUE!	#VALUE!	
	FEB	15,098	19,320	1120	35538	-164	-0.46%	
	MAR	14,926	19,690	1152	35768	230	0.65%	
	APR	14,893	19,639	1168	35700	-68	-0.19%	
	MAY	14,868	19,819	1119	35806	106	0.30%	
	JUN	14,933	19,542	1107	35582	-224	-0.63%	
	JUL	14,882	19,540	1085	35507	-75	-0.21%	
	AUG	14,869	19,034	1079	34982	-525	-1.48%	Sept '17 ALC became a state facility
	SEP	15,725	18,211	1065	35001	19	0.05%	
	OCT	15,579	19,235	1010	35824	823	2.35%	
	NOV	15,188	17,819	1012	34019	-1805	-5.04%	
	DEC	15,152	17,594	993	33739	-280	-0.82%	
2018	JAN	15,210	17,339	944	33493	-246	-0.73%	
	FEB	15,218	17,256	976	33450	-43	-0.13%	
	MAR	15,219	17,055	995	33269	-181	-0.54%	
	APR	15,107	17,281	1029	33417	148	0.44%	
	MAY	15,097	17,262	1000	33359	-58	-0.17%	
	JUN	15,072	17,191	923	33186	-173	-0.52%	
	JUL	14,928	16,789	931	32648	-538	-1.62%	
	AUG	14,992	16,778	914	32684	36	0.11%	
	SEP	14,980	16,730	902	32612	-72	-0.22%	
	OCT	14,981	16,683	969	32633	21	0.06%	
	NOV	14,936	16,513	1001	32450	-183	-0.56%	
	DEC	14,880	16,543	974	32397	-53	-0.16%	**Actual data depicted to this point
2019	JAN	15,565	18,557	1,000	34,122	80	0.20%	Projected figures start
	FEB	15,565	18,535	1,000	34,100	-23	-0.07%	
	MAR	15,565	18,530	1,000	34,095	-5	-0.01%	
	APR	15,565	18,540	1,000	34,105	10	0.03%	
	MAY	15,565	18,552	1,000	34,117	12	0.04%	
	JUN	15,565	18,528	1,000	34,093	-24	-0.07%	
	JUL	15,565	18,512	1,000	34,077	-16	-0.05%	
	AUG	15,565	18,562	1,000	34,127	50	0.15%	
	SEP	15,565	18,626	1,000	34,191	64	0.19%	
	OCT	15,565	18,674	1,000	34,239	48	0.14%	
	NOV	15,565	18,697	1,000	34,262	22	0.06%	
	DEC	15,565	18,708	1,000	34,273	12	0.03%	
2020	JAN	15,565	18,606	1,000	34,171	-102	-0.30%	
	FEB	15,565	18,610	1,000	34,175	3	0.01%	
	MAR	15,565	18,614	1,000	34,179	4	0.01%	
	APR	15,565	18,622	1,000	34,187	9	0.03%	
	MAY	15,565	18,617	1,000	34,182	-5	-0.02%	
	JUN	15,565	18,657	1,000	34,222	40	0.12%	
	JUL	15,565	18,592	1,000	34,157	-65	-0.19%	
	AUG	15,565	18,580	1,000	34,145	-12	-0.04%	
	SEP	15,565	18,562	1,000	34,127	-18	-0.05%	
	OCT	15,565	18,566	1,000	34,131	4	0.01%	
	NOV	15,565	18,557	1,000	34,122	-9	-0.03%	
	DEC	15,565	18,550	1,000	34,115	-6	-0.02%	



YEAR		STATE FACILITIES	LOCAL FACILITIES	CONTRACT TWP	TOTAL CUSTODY POPULATION		Cause of Significant Change
2021	JAN	15,565	18,463	1,000	34,028	-87	-0.26%
	FEB	15,565	18,445	1,000	34,010	-18	-0.05%
	MAR	15,565	18,415	1,000	33,980	-29	-0.09%
	APR	15,565	18,393	1,000	33,958	-22	-0.06%
	MAY	15,565	18,377	1,000	33,942	-16	-0.05%
	JUN	15,565	18,337	1,000	33,902	-40	-0.12%
	JUL	15,565	18,266	1,000	33,831	-71	-0.21%
	AUG	15,565	18,264	1,000	33,829	-2	-0.01%
	SEP	15,565	18,245	1,000	33,810	-19	-0.06%
	OCT	15,565	18,239	1,000	33,804	-6	-0.02%
	NOV	15,565	18,254	1,000	33,819	14	0.04%
	DEC	15,565	18,247	1,000	33,812	-7	-0.02%
2022	JAN	15,565	18,140	1,000	33,705	-107	-0.32%
	FEB	15,565	18,130	1,000	33,695	-10	-0.03%
	MAR	15,565	18,100	1,000	33,665	-30	-0.09%
	APR	15,565	18,070	1,000	33,635	-30	-0.09%
	MAY	15,565	18,035	1,000	33,600	-35	-0.10%
	JUN	15,565	18,021	1,000	33,586	-14	-0.04%
	JUL	15,565	17,909	1,000	33,474	-112	-0.33%
	AUG	15,565	17,918	1,000	33,483	9	0.03%
	SEP	15,565	17,895	1,000	33,460	-23	-0.07%
	OCT	15,565	17,887	1,000	33,452	-8	-0.02%
	NOV	15,565	17,883	1,000	33,448	-5	-0.01%
	DEC	15,565	17,872	1,000	33,437	-11	-0.03%
2023	JAN	15,565	17,869	1,000	33,434	-3	-0.01%
	FEB	15,565	17,856	1,000	33,421	-13	-0.04%
	MAR	15,565	17,840	1,000	33,405	-16	-0.05%
	APR	15,565	17,838	1,000	33,403	-2	-0.01%
	MAY	15,565	17,828	1,000	33,393	-9	-0.03%
	JUN	15,565	17,803	1,000	33,368	-26	-0.08%
	JUL	15,565	17,813	1,000	33,378	11	0.03%
	AUG	15,565	17,808	1,000	33,373	-6	-0.02%
	SEP	15,565	17,782	1,000	33,347	-26	-0.08%
	OCT	15,565	17,775	1,000	33,340	-7	-0.02%
	NOV	15,565	17,757	1,000	33,322	-18	-0.06%
	DEC	15,565	17,728	1,000	33,293	-28	-0.08%

# DEPARTMENT OF PUBLIC SAFETY AND CORRECTIONS POPULATION TRENDS JANUARY 1996 - DECEMBER 2007 (SEMI-ANNUALLY)

# Offenders

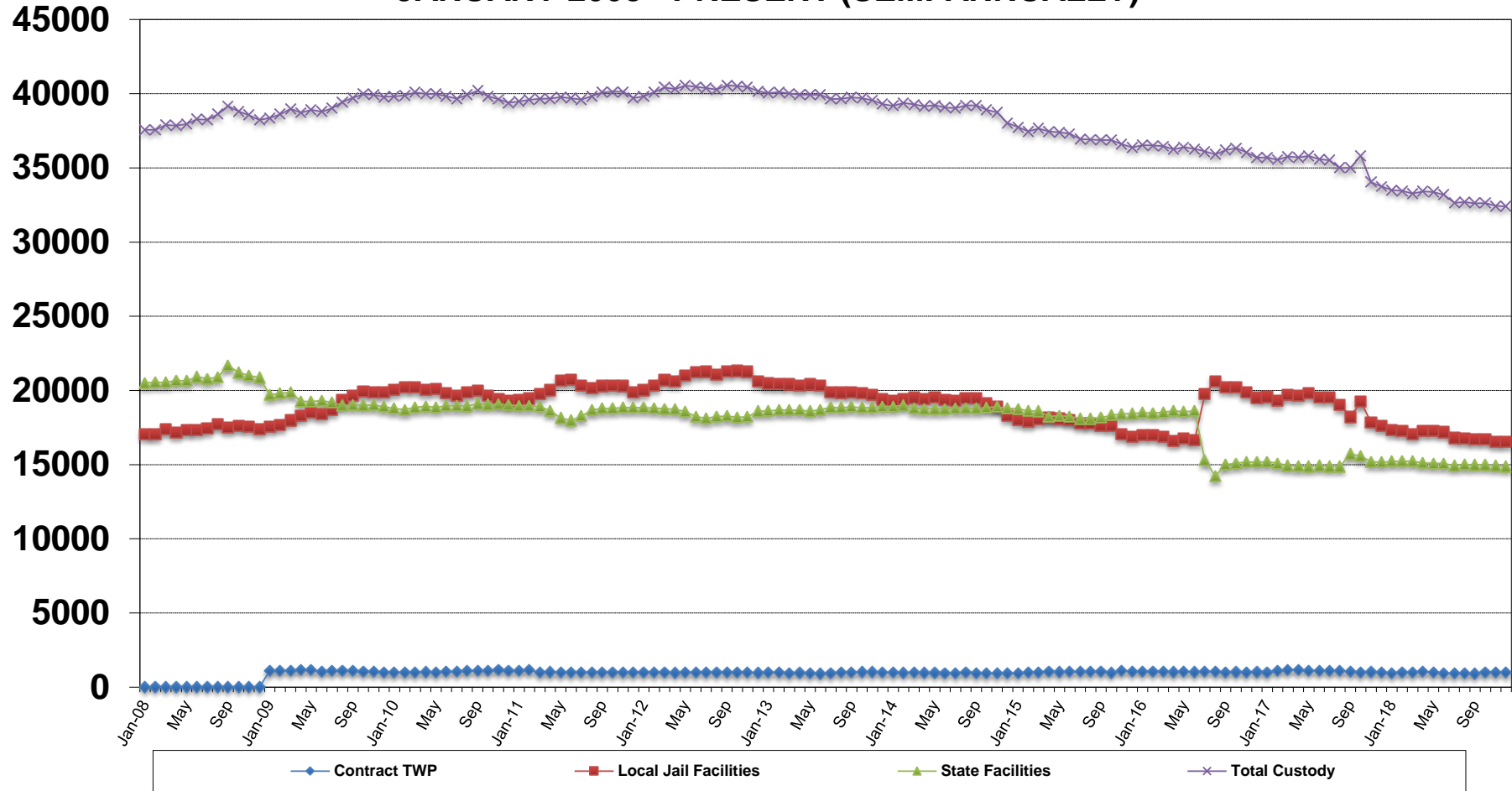


8/29/05 Hurricane Katrina occurred and Hurricane Rita occurred on 9/24/05, therefore parish jail evacuees were taken into DOC population.

\* Effective 10/26/01 current state offender populations based on operational capacity from Current State Offender Populations: Projected Expansions document plus the number of evacuees located in state institutions and parish jail

## DEPARTMENT OF PUBLIC SAFETY AND CORRECTIONS POPULATION TRENDS JANUARY 2008 - PRESENT (SEMI-ANNUALLY)

# Offenders



09/01/17 Allen Correctional Center became a state facility.

07/01/16 Allen Correctional Center and Winn Correctional Center became classified as local facilities.

05/09/11 Threat of the flooding of the Mississippi River occurred, LSP offenders were evacuated to other state facilities, therefore intakes from parish prisons were suspended for 7 weeks.

09/01/08 Hurricane Gustav occurred, therefore parish jail evacuees were taken into DOC population.

DATE: 12/26/2018  
DEPARTMENT OF PUBLIC SAFETY AND CORRECTIONS  
WEEKLY VACANCY AND RELEASE REPORT

INSTITUTIONS	OPERATIONAL CAPACITY	ASSIGNED	PHYSICALLY PRESENT	NON DOC/ PARISH HOLDS	CURRENT VACANCIES	PROJECTED RELEASES
<b>WARDEN'S REGION 1</b>						
DWCC *1	1174	1168	1168	0	6	0
PROTECTION (WCC)	50	49	49	0	1	0
<b>SUBTOTAL DWCC</b>	<b>1224</b>	<b>1217</b>	<b>1217</b>	<b>0</b>	<b>7</b>	<b>0</b>
DCI	1378	1400	1395	2	-24	6
Youthful Offender	40	13	13	0	27	0
UNIT 3	242	213	213	0	29	0
UNIT 4	140	134	134	0	6	0
<b>SUBTOTAL DCI</b>	<b>1800</b>	<b>1760</b>	<b>1755</b>	<b>2</b>	<b>38</b>	<b>6</b>
EHCC - GEN. POP.	1510	1501	1498	0	9	4
SKILLED NURSING UNIT *4	54	57	57	0	-3	0
HRDC	411	282	272	6	123	1
<b>SUBTOTAL HCC</b>	<b>1975</b>	<b>1840</b>	<b>1827</b>	<b>6</b>	<b>129</b>	<b>5</b>
LSP	5684	5456	5443	2	226	0
NURSING UNIT 2	34	27	27	0	7	0
LSP/LCIW	5	5	5	1	-1	0
DEATH ROW	90	69	69	0	21	0
<b>SUBTOTAL LSP</b>	<b>5813</b>	<b>5557</b>	<b>5544</b>	<b>3</b>	<b>253</b>	<b>0</b>
<b>REGION 1 TOTAL</b>	<b>10812</b>	<b>10374</b>	<b>10343</b>	<b>11</b>	<b>427</b>	<b>11</b>
<b>WARDEN'S REGION 2</b>						
RLCC	1443	1528	1527	0	-85	3
LRDC	250	141	140	0	109	0
JLDCC	115	17	17	0	98	0
<b>SUBTOTAL RLCC</b>	<b>1808</b>	<b>1686</b>	<b>1684</b>	<b>0</b>	<b>122</b>	<b>3</b>
LCIW - GEN. POP. *7,8	0	0	0	0	0	0
FRDC *8	0	0	0	0	0	0
DEATH ROW *8	4	0	0	0	4	0
LCIW/EHCC	296	291	289	0	5	6
LCIW/JETSON	304	246	240	0	58	2
<b>SUBTOTAL LCIW</b>	<b>604</b>	<b>537</b>	<b>529</b>	<b>0</b>	<b>67</b>	<b>8</b>
RCC *6	1314	1312	1303	0	2	0
STATE POLICE	155	140	140	0	15	0
ALC	872	831	829	0	41	6
WNC *10	1576	1433	1433	0	143	4
<b>REGION 2 TOTAL</b>	<b>6329</b>	<b>5939</b>	<b>5918</b>	<b>0</b>	<b>390</b>	<b>21</b>
<b>TOTAL INSTITUTION *10</b>	<b>15565</b>	<b>14880</b>	<b>14828</b>	<b>11</b>	<b>674</b>	<b>28</b>
<b>TOTAL WNC</b>	<b>1576</b>	<b>1433</b>	<b>1433</b>	<b>0</b>	<b>143</b>	<b>4</b>
<b>TOTAL</b>	<b>17141</b>	<b>16313</b>	<b>16261</b>	<b>11</b>	<b>817</b>	<b>32</b>
<b>CONTRACT TWP</b>						
CEDARWOOD MANOR	100	73	73	0	27	2
COF/MON-MEN	162	96	96	0	66	0
EFL TWP	75	69	69	0	6	0
LAFOURCHE TWP	174	141	141	0	33	2
WFL TWP	60	34	34	0	26	0
RAPIDES TWP *2	200	103	103	0	97	1
SOUTHWEST TWP	350	300	300	0	50	4
WBR TWP *3	185	158	158	0	27	2
<b>TOTAL CONTRACT TWP *5</b>	<b>1306</b>	<b>974</b>	<b>974</b>	<b>0</b>	<b>332</b>	<b>11</b>
<b>GRAND TOTAL</b>	<b>18447</b>	<b>17287</b>	<b>17235</b>	<b>11</b>	<b>1149</b>	<b>43</b>

\*1 Includes 0 WRDC.

\*2 RAP TWP Co-op agreement is for 245.

\*3 WBR TWP Co-op agreement is for 185.

\*4 Rated capacity is 64

\*5 Totals are included on the CFACILITY report

\*6 Physically present includes 0 intensive incarceration offenders

\*7 Physically present includes 0 intensive incarceration offenders

\*8 Currently empty due to evacuation because of flooding.

\*9 There are 33 Orleans non DOC offenders in the HSU dorm not included in Hunt totals

\*10 WNC is not included in the Total Institution counts

**Institution totals do not include today's intake due to Mon/Tues State Holidays.**