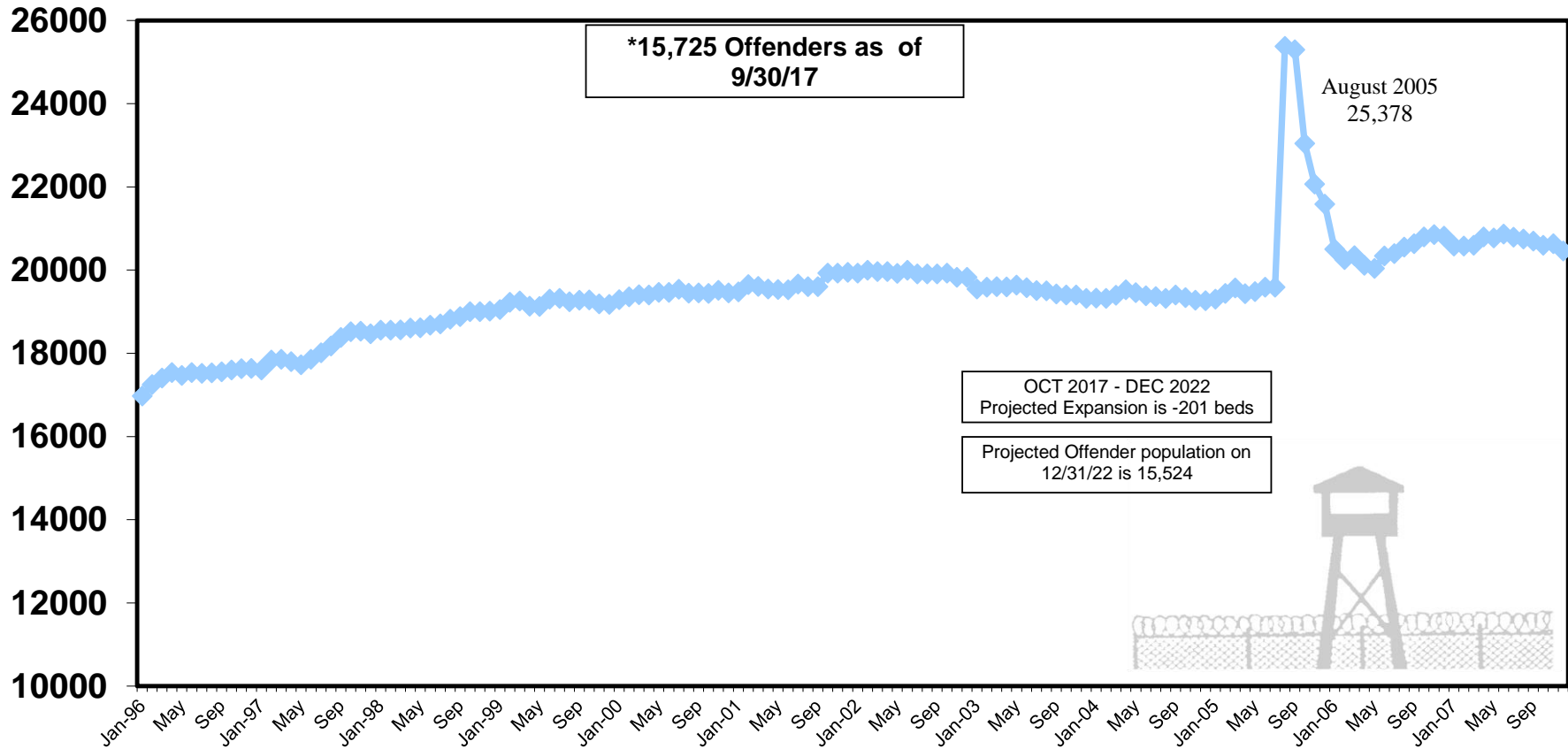


**DEPARTMENT OF PUBLIC SAFETY AND CORRECTIONS
POPULATION TRENDS
ADULT OFFENDERS IN STATE FACILITIES
January 1996- December 2007**

Offenders



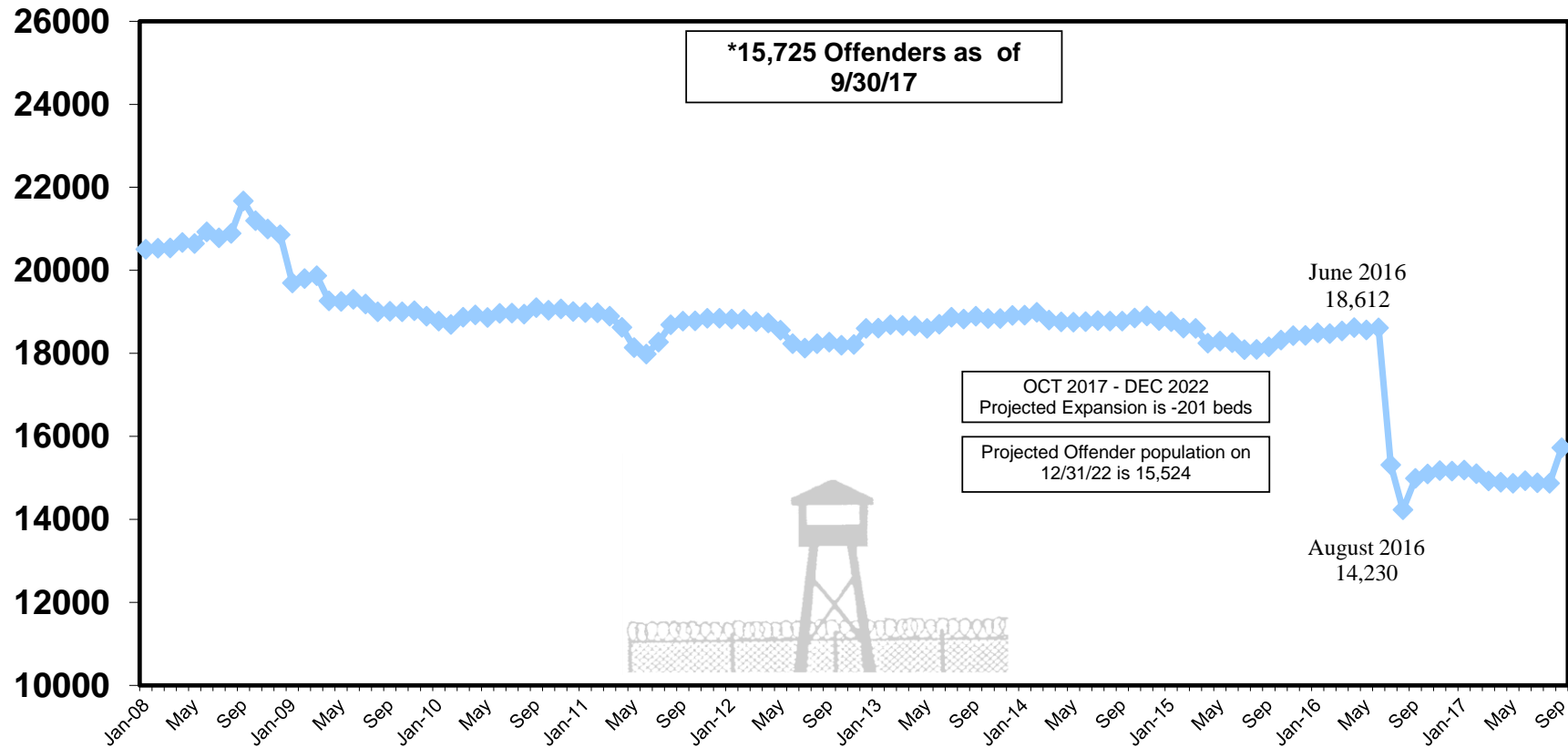
8/29/05 Hurricane Katrina occurred and Hurricane Rita occurred on 9/24/05, therefore parish jail evacuees were taken into DOC population.

* Effective 07/01/02, current state offender populations are based on assigned capacity from the Weekly Census plus the number of evacuees/other TOC located in state institutions

ACTUAL DATA DEPICTED THROUGH 9/30/2017

**DEPARTMENT OF PUBLIC SAFETY AND CORRECTIONS
POPULATION TRENDS
ADULT OFFENDERS IN STATE FACILITIES
January 2008- Present**

Offenders



*15,725 Offenders as of 9/30/17

OCT 2017 - DEC 2022
Projected Expansion is -201 beds

Projected Offender population on 12/31/22 is 15,524

June 2016
18,612

August 2016
14,230

- 9/1/2017 Allen Correctional Center became a state facility.
- 07/01/16 Allen Correctional Center and Winn Correctional Center became classified as local facilities.
- 05/09/11 Threat of the flooding of the Mississippi River occurred, LSP offenders were evacuated to other state facilities, therefore intakes from parish prisons were suspended for 7 weeks.
- Effective 1/1/09 Contract transitional work programs are separated out from State Facilities.
- 09/01/08 Hurricane Gustav occurred, therefore parish jail evacuees were taken into DOC population.

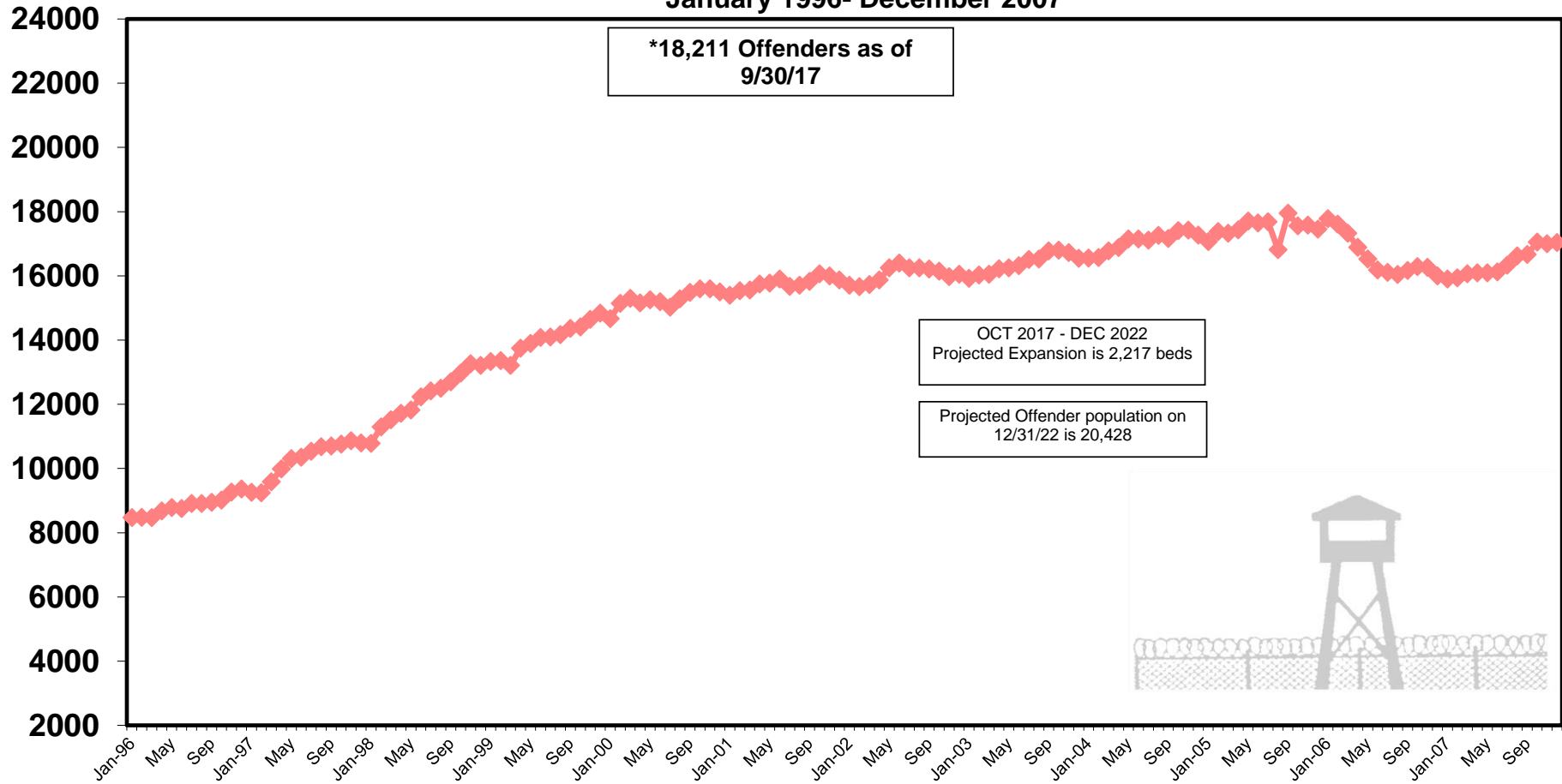
ACTUAL DATA DEPICTED THROUGH 9/30/2017

**DEPARTMENT OF PUBLIC SAFETY AND CORRECTIONS
POPULATION TRENDS**

ADULT OFFENDERS IN LOCAL JAIL FACILITIES (EXCLUDING CONTRACT TWP)

January 1996- December 2007

Offenders



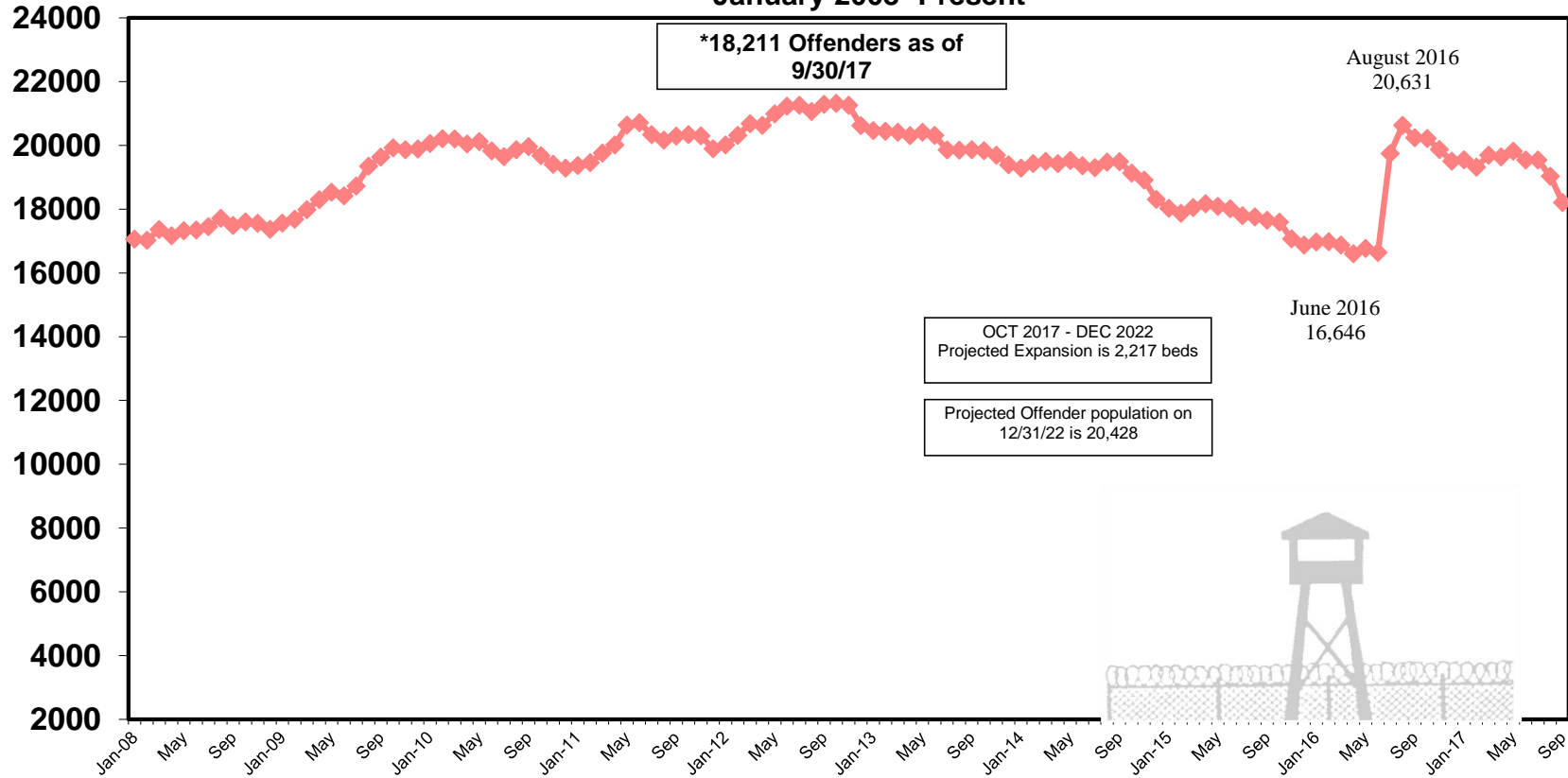
* Effective 8/30/05 current state offender populations based on operational capacity from Current State Offender Populations: Projected Expansions document plus the number of evacuees located in parish jails
8/29/05 Hurricane Katrina occurred and Hurricane Rita occurred on 9/24/05, therefore parish jail evacuees were taken into DOC population.

ACTUAL DATA DEPICTED THROUGH 9/30/2017

**DEPARTMENT OF PUBLIC SAFETY AND CORRECTIONS
POPULATION TRENDS**

**ADULT OFFENDERS IN LOCAL JAIL FACILITIES (EXCLUDING CONTRACT TWP)
January 2008- Present**

Offenders



9/1/2017 Allen Correctional Center became a state facility.

7/1/2016 Allen Correctional Center and Winn Correctional Center became classified as local facilities

05/09/11 Threat of the flooding of the Mississippi River occurred, LSP offenders were evacuated to other state facilities, therefore intakes from parish prisons were suspended for 7 weeks.

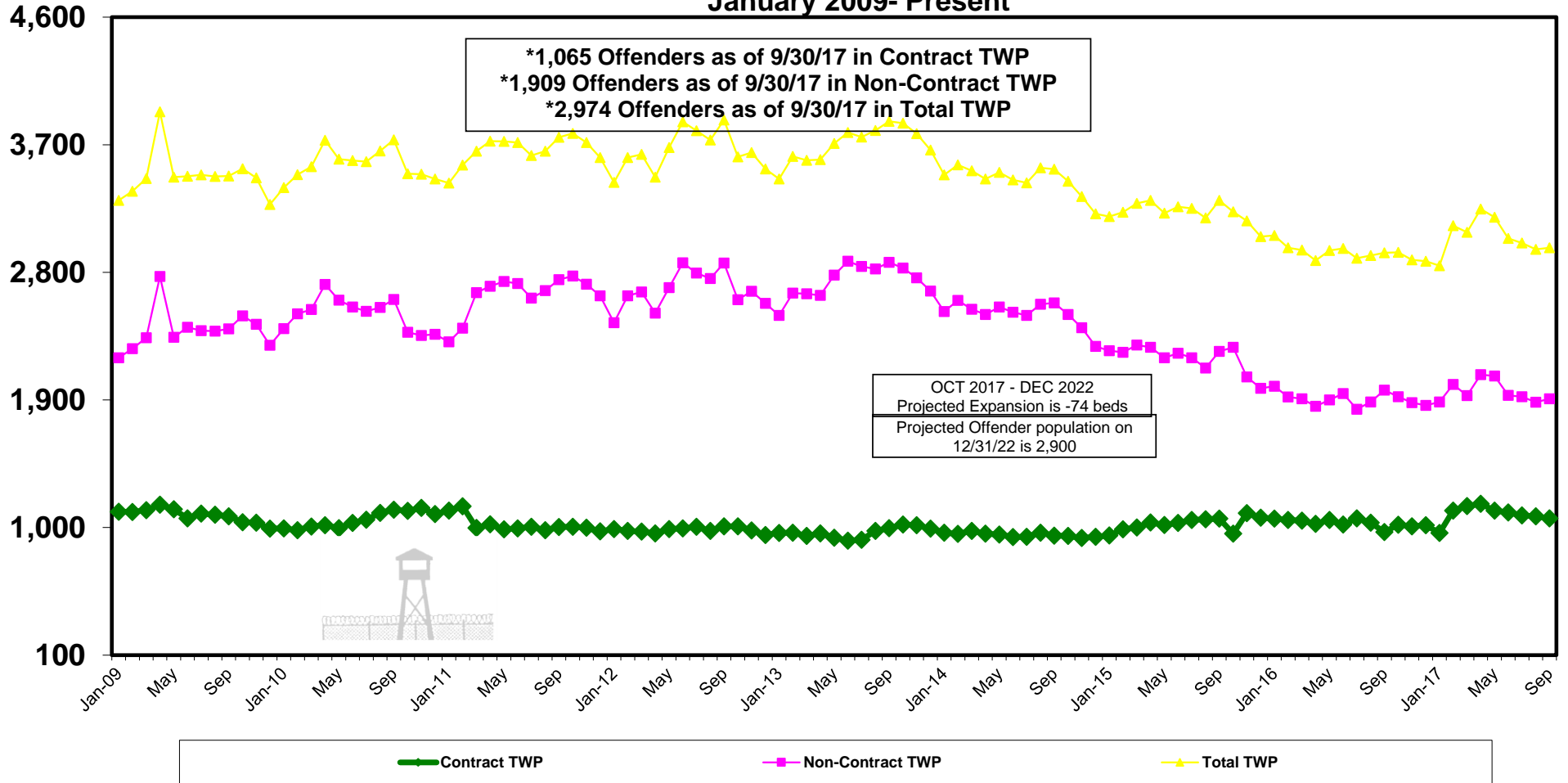
Effective 1/1/09 Contract transitional work programs are separated out from State Facilities.

09/01/08 Hurricane Gustav occurred, therefore parish jail evacuees were taken into DOC population.

ACTUAL DATA DEPICTED THROUGH 9/30/2017

**DEPARTMENT OF PUBLIC SAFETY AND CORRECTIONS
POPULATION TRENDS
ADULT OFFENDERS IN TRANSITIONAL WORK PROGRAMS
January 2009- Present**

Offenders

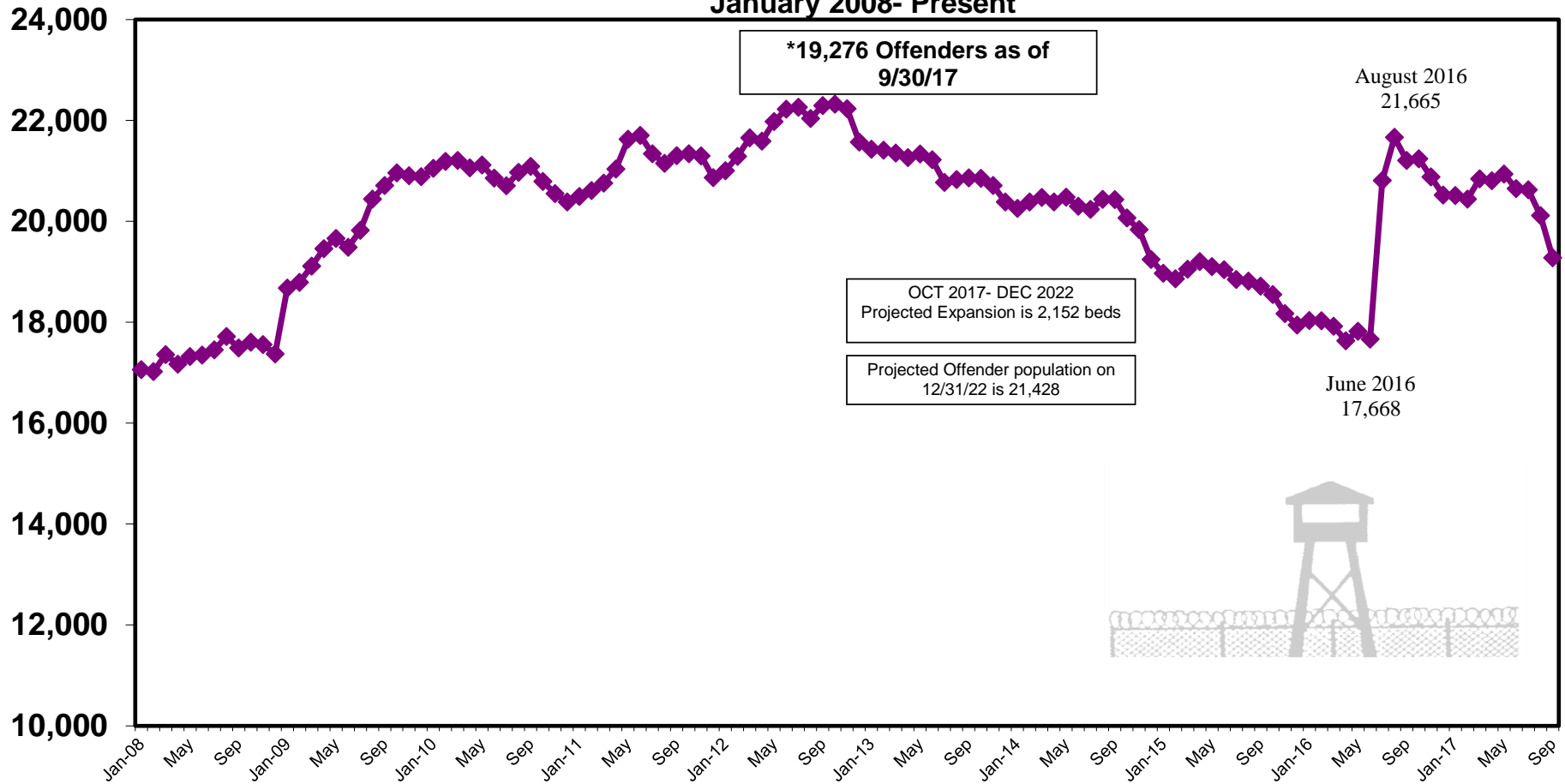


Effective 1/1/09 Contract transitional work programs are separated out from State Facilities.

ACTUAL DATA DEPICTED THROUGH 9/30/2017

**DEPARTMENT OF PUBLIC SAFETY AND CORRECTIONS
POPULATION TRENDS
ADULT OFFENDERS IN LOCAL FACILITIES (INCLUDING TWP)
January 2008- Present**

Offenders

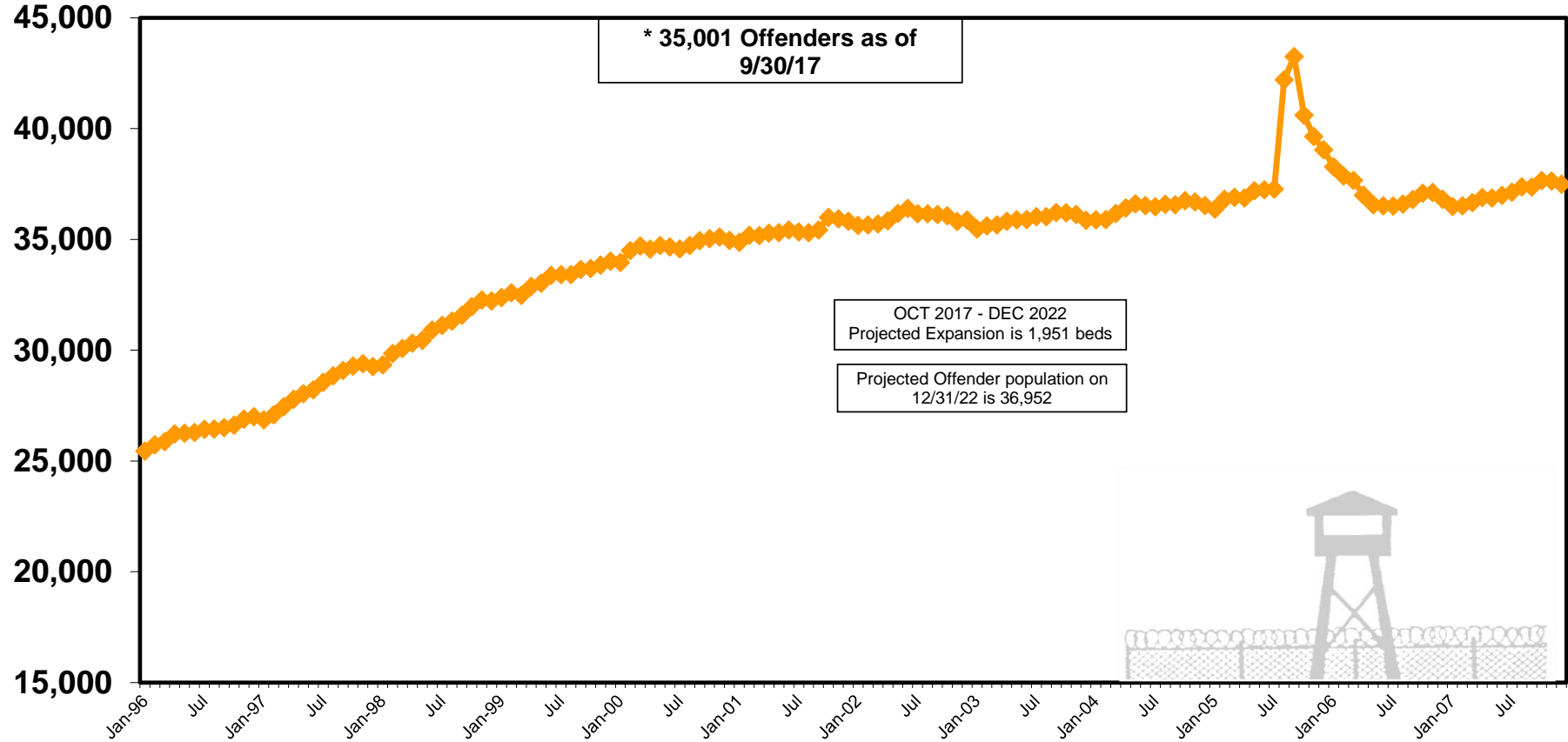


This number includes Transitional Work Programs beginning in 1/1/09.
Effective 1/1/09 Contract transitional work programs are separated out from State Facilities.

ACTUAL DATA DEPICTED THROUGH 9/30/2017

**DEPARTMENT OF PUBLIC SAFETY AND CORRECTIONS
POPULATION TRENDS
TOTAL ADULT OFFENDERS
January 1996- December 2007**

Offenders



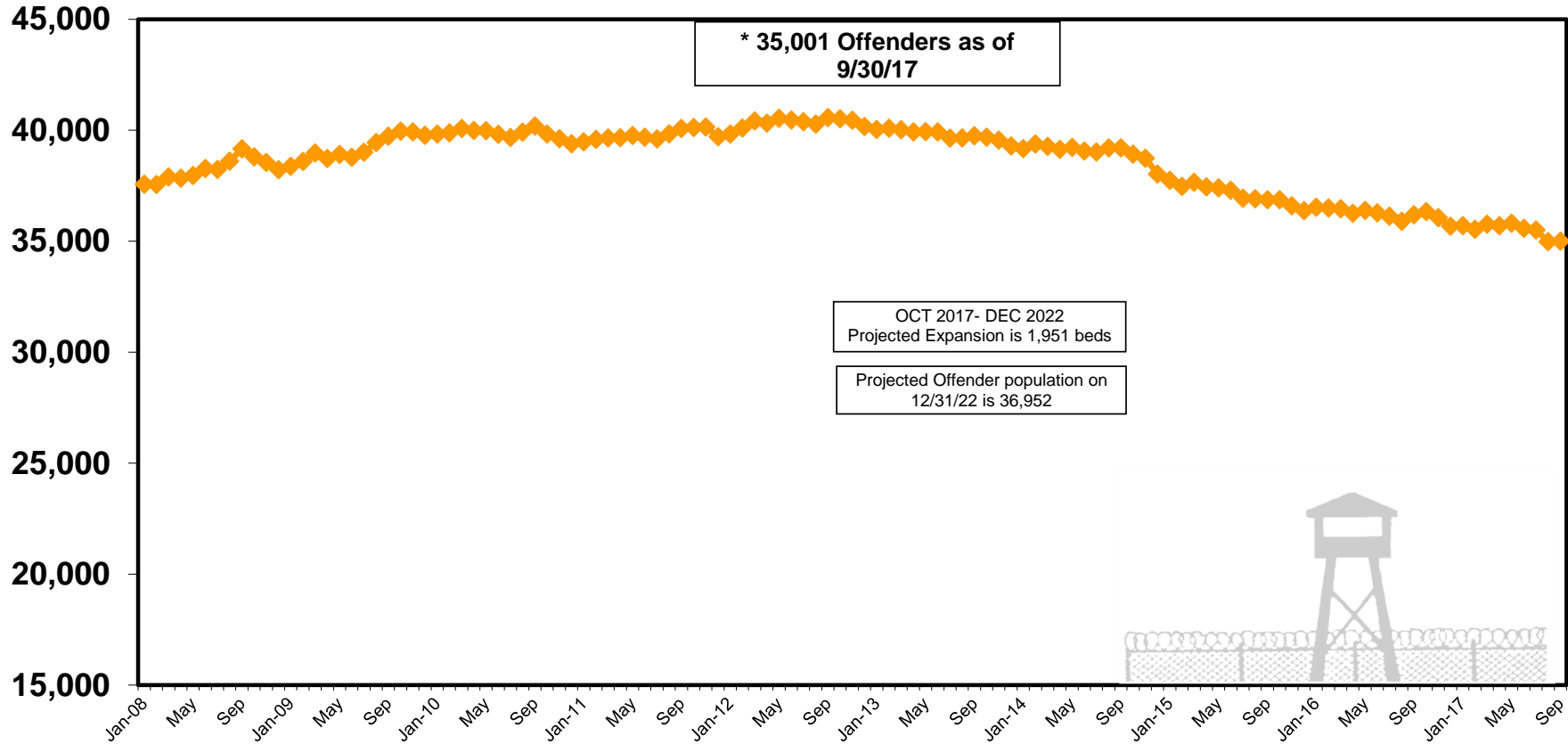
8/29/05 Hurricane Katrina occurred and Hurricane Rita occurred on 9/24/05, therefore parish jail evacuees were taken into DOC population.

* Effective 10/26/01 current state offender populations based on operational capacity from Current State Offender Populations: Projected Expansions document plus the number of evacuees located in state institutions and parish jails

ACTUAL DATA DEPICTED THROUGH 9/30/2017

**DEPARTMENT OF PUBLIC SAFETY AND CORRECTIONS
POPULATION TRENDS
TOTAL ADULT OFFENDERS
January 2008- Present**

Offenders



05/09/11 Threat of the flooding of the Mississippi River occurred, LSP offenders were evacuated to other state facilities, therefore intakes from parish prisons were suspended for 7 weeks.

09/01/08 Hurricane Gustav occurred, therefore parish jail evacuees were taken into DOC population.

ACTUAL DATA DEPICTED THROUGH 9/30/2017

DEPARTMENT OF PUBLIC SAFETY AND CORRECTIONS
POPULATION TRENDS - RAW DATA
1989 - 2015

YEAR	STATE FACILITIES	LOCAL FACILITIES	CONTRACT TWP	TOTAL CUSTODY POPULATION			Cause of Significant Change
1989	JAN	12139	4110	16249			
	FEB	12108	3811	15919	-330	-2.03%	
	MAR	12152	3826	15978	59	0.37%	
	APR	12168	3996	16164	186	1.16%	
	MAY	12183	4102	16285	121	0.75%	
	JUN	12256	4233	16489	204	1.25%	
	JUL	12253	4309	16562	73	0.44%	Avoyelles Corr. Opens
	AUG	12439	4037	16476	-86	-0.52%	
	SEP	12989	3791	16780	304	1.85%	
	OCT	13067	3893	16960	180	1.07%	
	NOV	13195	3977	17172	212	1.25%	
	DEC	13190	4078	17268	96	0.56%	
1990	JAN	13176	4153	17329	61	0.35%	
	FEB	13230	4295	17525	196	1.13%	
	MAR	13263	4362	17625	100	0.57%	Winn Corr. Opens
	APR	13605	4154	17759	134	0.76%	
	MAY	13802	4194	17996	237	1.33%	
	JUN	13861	4305	18166	170	0.94%	
	JUL	13881	4466	18347	181	1.00%	
	AUG	13858	4494	18352	5	0.03%	
	SEP	13865	4588	18453	101	0.55%	
	OCT	13910	4710	18620	167	0.91%	
	NOV	14009	4689	18698	78	0.42%	
	DEC	14079	4720	18799	101	0.54%	Allen Corr. Opens
1991	JAN	14298	4334	18632	-167	-0.89%	
	FEB	14403	4319	18722	90	0.48%	
	MAR	14504	4264	18768	46	0.25%	
	APR	14605	4247	18852	84	0.45%	
	MAY	14670	4270	18940	88	0.47%	
	JUN	14771	4281	19052	112	0.59%	
	JUL	14806	4326	19132	80	0.42%	Perdiem inc. to \$21/day
	AUG	14778	4431	19209	77	0.40%	
	SEP	14732	4585	19317	108	0.56%	
	OCT	14844	4857	19701	384	1.99%	
	NOV	14882	4976	19858	157	0.80%	
	DEC	14970	5047	20017	159	0.80%	
1992	JAN	14975	5011	19986	-31	-0.15%	
	FEB	15036	5256	20292	306	1.53%	
	MAR	15063	5312	20375	83	0.41%	
	APR	15112	5233	20345	-30	-0.15%	
	MAY	15088	5369	20457	112	0.55%	
	JUN	15114	5454	20568	111	0.54%	
	JUL	15097	5351	20448	-120	-0.58%	DOC begins prison expansion
	AUG	15270	5279	20549	101	0.49%	
	SEP	15486	5059	20545	-4	-0.02%	
	OCT	15740	4952	20692	147	0.72%	
	NOV	15968	4975	20943	251	1.21%	
	DEC	16152	4855	21007	64	0.31%	
1993	JAN	16233	4663	20896	-111	-0.53%	
	FEB	16383	4647	21030	134	0.64%	
	MAR	16502	4739	21241	211	1.00%	
	APR	16385	5065	21450	209	0.98%	
	MAY	16362	5170	21532	82	0.38%	
	JUN	16459	5291	21750	218	1.01%	
	JUL	16464	5452	21916	166	0.76%	
	AUG	16288	5799	22087	171	0.78%	LSP Camps A & H closed
	SEP	16075	6098	22173	86	0.39%	
	OCT	16144	6277	22421	248	1.12%	
	NOV	16181	6458	22639	218	0.97%	
	DEC	16141	6422	22563	-76	-0.34%	
1994	JAN	16142	6390	22532	-31	-0.14%	
	FEB	16197	6664	22861	329	1.46%	
	MAR	16229	6703	22932	71	0.31%	
	APR	16283	6818	23101	169	0.74%	
	MAY	16300	6889	23189	88	0.38%	
	JUN	16224	7099	23323	134	0.58%	
	JUL	16241	7115	23356	33	0.14%	
	AUG	16281	7326	23607	251	1.07%	
	SEP	16132	7445	23577	-30	-0.13%	
	OCT	16140	7766	23906	329	1.40%	
	NOV	16093	8038	24131	225	0.94%	
	DEC	16071	8149	24220	89	0.37%	

YEAR		STATE FACILITIES	LOCAL FACILITIES	CONTRACT TWP	TOTAL CUSTODY POPULATION			Cause of Significant Change
1995	JAN	16018	8081		24099	-121	-0.50%	ALC, AVC, WNC operational capacities inc. to 1474 ea.
	FEB	16225	8228		24453	354	1.47%	
	MAR	16203	8243		24446	-7	-0.03%	
	APR	16184	8318		24502	56	0.23%	
	MAY	16166	8604		24770	268	1.09%	
	JUN	16266	8601		24867	97	0.39%	
	JUL	16234	8770		25004	137	0.55%	
	AUG	16383	8751		25134	130	0.52%	
	SEP	16497	8741		25238	104	0.41%	
	OCT	16803	8799		25602	364	1.44%	
	NOV	16986	8683		25669	67	0.26%	
	DEC	17077	8600		25677	8	0.03%	
1996	JAN	16975	8472		25447	-230	-0.90%	
	FEB	17246	8480		25726	279	1.10%	
	MAR	17407	8471		25878	152	0.59%	
	APR	17539	8682		26221	343	1.33%	
	MAY	17470	8786		26256	35	0.13%	
	JUN	17535	8752		26287	31	0.12%	
	JUL	17516	8914		26430	143	0.54%	
	AUG	17532	8913		26445	15	0.06%	
	SEP	17553	8951		26504	59	0.22%	
	OCT	17600	9012		26612	108	0.41%	
	NOV	17630	9264		26894	282	1.06%	
	DEC	17635	9364		26999	105	0.39%	
1997	JAN	17597	9256		26853	-146	-0.54%	
	FEB	17838	9243		27081	228	0.85%	
	MAR	17857	9587		27444	363	1.34%	
	APR	17797	9984		27781	337	1.23%	
	MAY	17727	10305		28032	251	0.90%	
	JUN	17856	10353		28209	177	0.63%	
	JUL	18014	10540		28554	345	1.22%	
	AUG	18174	10677		28851	297	1.04%	
	SEP	18384	10702		29086	235	0.81%	
	OCT	18519	10763		29282	196	0.67%	
	NOV	18529	10868		29397	115	0.39%	
	DEC	18470	10795		29265	-132	-0.45%	
1998	JAN	18559	10784		29343	78	0.27%	
	FEB	18554	11294		29848	505	1.72%	
	MAR	18565	11517		30082	234	0.78%	
	APR	18606	11717		30323	241	0.80%	
	MAY	18616	11825		30441	118	0.39%	
	JUN	18679	12228		30907	466	1.53%	
	JUL	18705	12419		31124	217	0.70%	
	AUG	18819	12500		31319	195	0.63%	
	SEP	18880	12701		31581	262	0.84%	
	OCT	19001	12976		31977	396	1.25%	
	NOV	19004	13267		32271	294	0.92%	
	DEC	19016	13211		32227	-44	-0.14%	
1999	JAN	19053	13364		32417	190	0.59%	
	FEB	19072	13364		32436	19	0.06%	
	MAR	19259	13214		32473	37	0.11%	
	APR	19350	13380		32730	257	0.79%	
	MAY	19129	13897		33026	296	0.90%	
	JUN	19320	14099		33419	393	1.19%	
	JUL	19320	14099		33419	0	0.00%	
	AUG	19239	14170		33409	-10	-0.03%	
	SEP	19278	14365		33643	234	0.70%	
	OCT	19281	14409		33690	47	0.14%	
	NOV	19267	14649		33916	226	0.67%	
	DEC	19174	14838		34012	96	0.28%	
2000	JAN	19292	14671		33963	-49	-0.14%	
	FEB	19325	15081		34406	443	1.30%	
	MAR	19406	15300		34706	300	0.87%	
	APR	19403	15158		34561	-145	-0.42%	
	MAY	19259	15259		34518	-43	-0.12%	
	JUN	19510	15194		34704	186	0.54%	
	JUL	19541	15027		34568	-136	-0.39%	
	AUG	19443	15285		34728	160	0.46%	
	SEP	19478	15412		34890	162	0.47%	
	OCT	19440	15596		35036	146	0.42%	
	NOV	19515	15596		35111	75	0.21%	
	DEC	19450	15504		34954	-157	-0.45%	

YEAR		STATE FACILITIES	LOCAL FACILITIES	CONTRACT TWP	TOTAL CUSTODY POPULATION			Cause of Significant Change
2001	JAN	19476	15397		34873	-81	-0.23%	
	FEB	19651	15537		35188	315	0.90%	
	MAR	19611	15559		35170	-18	-0.05%	
	APR	19543	15742		35285	115	0.33%	
	MAY	19534	15776		35310	25	0.07%	
	JUN	19528	15901		35429	119	0.34%	
	JUL	19663	15670		35333	-96	-0.27%	
	AUG	19603	15707		35310	-23	-0.07%	
	SEP	19604	15825		35429	119	0.34%	
	OCT	19929	16063		35992	563	1.59%	
	NOV	19929	15995		35924	-68	-0.19%	
	DEC	19949	15874		35823	-101	-0.28%	
2002	JAN	19547	16114		35661	-162	-0.45%	
	FEB	19587	16063		35650	-11	-0.03%	
	MAR	19601	16138		35739	89	0.25%	
	APR	19593	16162		35755	16	0.04%	
	MAY	19593	16219		35812	57	0.16%	
	JUN	19593	16242		35835	23	0.06%	
	JUL	19907	16252		36159	324	0.90%	Beginning of George Washington University Projections
	AUG	19911	16251		36162	3	0.01%	
	SEP	19911	16215		36126	-36	-0.10%	
	OCT	19927	16145		36072	-54	-0.15%	
	NOV	19830	15973		35803	-269	-0.75%	
	DEC	19830	16048		35878	75	0.21%	
	2003	JAN	19547	15927		35474	-404	-1.13%
FEB		19587	16029		35616	142	0.40%	
MAR		19601	16050		35651	35	0.10%	
APR		19593	16222		35815	164	0.46%	
MAY		19639	16248		35887	72	0.20%	
JUN		19575	16321		35896	9	0.03%	
JUL		19509	16512		36021	125	0.35%	
AUG		19504	16525		36029	8	0.02%	
SEP		19425	16782		36207	178	0.49%	
OCT		19405	16798		36203	-4	-0.01%	
NOV		19403	16726		36129	-74	-0.20%	
DEC		19318	16547		35865	-264	-0.73%	
2004	JAN	19326	16559		35885	20	0.06%	Due to Hurricanes Katrina (8/29/05) and Rita(9/24/05), evacuees were taken into our population.
	FEB	19321	16569		35890	5	0.01%	Aug '05: Of the 25,378 in state facilities, 3,814 are Pre-trial Non-state offenders/arrestees
	MAR	19393	16776		36169	279	0.78%	Aug '05: Of the 16,819 in local facilities, 1309 are Pre-trial Non-state offenders/arrestees
	APR	19530	16886		36416	247	0.68%	Sep '05: Of the 25,437 in state facilities, 920 are physically located in Bureau of Prisons in Florida; 4,298 are Pre-trial Non-state offenders/arrestees
	MAY	19457	17152		36609	193	0.53%	Sep '05: Of the 17,953 in local facilities, 1,655 are Pre-trial Non-state offenders/arrestees
	JUN	19381	17147		36528	-81	-0.22%	Oct '05: Of the 23,045 in state facilities, 777 are physically located in Bureau of Prisons in Florida; 2,771 are Pre-trial Non-state offenders/arrestees
	JUL	19365	17110		36475	-53	-0.15%	
	AUG	19321	17265		36586	111	0.30%	Oct '05: Of the 17,558 in local facilities, 1,396 are Pre-trial Non-state offenders/arrestees
	SEP	19400	17164		36564	-22	-0.06%	Nov '05: Of the 22,065 in state facilities, 579 are physically located in Bureau of Prisons in Florida 2,084 are Pre-trial Non-state offenders/arrestees
	OCT	19341	17409		36750	186	0.51%	
	NOV	19276	17422		36698	-52	-0.14%	Nov '05: Of the 17,581 in local facilities, 1,474 are Pre-trial Non-state offenders/arrestees
	DEC	19265	17269		36534	-164	-0.45%	Dec '05: Of the 21,583 in state facilities, 529 are physically located in Bureau of Prisons in Florida 1,682 are Pre-trial Non-state offenders/arrestees
2005	JAN	19300	17066		36366	-168	-0.46%	Dec '05: Of the 17,456 in local facilities, 1,422 are Pre-trial Non-state offenders/arrestees
	FEB	19439	17378		36817	451	1.24%	Jan '06: Of the 20,501 in state facilities, 289 are physically located in Bureau of Prisons in Florida 703 are Pre-trial Non-state offenders/arrestees
	MAR	19569	17327		36896	79	0.21%	Jan '06: Of the 17,780 in local facilities, 1,838 are Pre-trial Non-state offenders/arrestees
	APR	19435	17431		36866	-30	-0.08%	Feb '06: Of the 20,255 in state facilities, 532 are Pre-trial Non-state offenders/arrestees
	MAY	19484	17708		37192	326	0.88%	Feb '06: Of the 17,609 in local facilities, 1,475 are Pre-trial Non-state offenders/arrestees
	JUN	19591	17645		37236	44	0.12%	Mar '06: Of the 20,344 in state facilities, 753 are Pre-trial Non-state offenders/arrestees
	JUL	19589	17685		37274	38	0.10%	Mar '06: Of the 17,327 in local facilities, 1,347 are Pre-trial Non-state offenders/arrestees
	AUG	25378	16819		42197	4923	13.21%	Apr '06: Of the 20,113 in state facilities, 474 are Pre-trial Non-state offenders/arrestees
	SEP	25437	17953		43390	1193	2.83%	Apr '06: Of the 16,887 in local facilities, 1,010 are Pre-trial Non-state offenders/arrestees
	OCT	23045	17558		40603	-2787	-6.42%	May '06: Of the 20,042 in state facilities, 320 are Pre-trial Non-state offender/arrestees
	NOV	22065	17581		39646	-957	-2.36%	May '06: Of the 16,525 in local facilities, 584 are Pre-trial Non-state offenders/arrestees
	DEC	21583	17456		39039	-607	-1.53%	June '06: Of the 20,341 in state facilities, 381 are Pre-trial Non-state offenders/arrestees
2006	JAN	20501	17780		38281	-758	-1.94%	July '06: Of the 16,182 in local facilities, 395 are Pre-trial Non-state offenders/arrestees
	FEB	20255	17609		37864	-417	-1.09%	July '06: Of the 20,396 in state facilities, 446 are Pre-trial Non-state offenders/arrestees
	MAR	20344	17327		37671	-193	-0.51%	July '06: Of the 16,112 in local facilities, 396 are Pre-trial Non-state offenders/arrestees
	APR	20113	16887		37000	-671	-1.78%	Aug '06: Of the 20,554 in state facilities, 528 are Pre-trial Non-state offenders/arrestees
	MAY	20042	16525		36567	-433	-1.17%	Aug '06: Of the 16,044 in local facilities, 302 are Pre-trial Non-state offenders/arrestees
	JUN	20341	16182		36523	-44	-0.12%	Sept '06: Of the 20,539 in state facilities, 513 are Pre-trial Non-state offenders/arrestees
	JUL	20396	16112		36508	-15	-0.04%	Sept '06: Of the 16,171 in local facilities, 209 are Pre-trial Non-state offenders/arrestees
	AUG	20554	16044		36598	90	0.25%	Oct '06: Of the 20,799 in state facilities, 641 are Pre-trial Non-state Offenders/arrestees
	SEP	20539	16171		36710	112	0.31%	Oct '06: Of the 16,285 in local facilities, 117 are Pre-trial Non-state offenders/arrestees
	OCT	20799	16285		37084	374	1.02%	Nov '06: Of the 20,852 in state facilities, 624 are Pre-trial Non-state Offenders/arrestees
	NOV	20852	16268		37120	36	0.10%	Nov '06: Of the 16,268 in local facilities, 93 are Pre-trial Non-state offenders/arrestees
	DEC	20815	15995		36810	-310	-0.84%	Dec '06: Of the 20,815 in state facilities, 572 are Pre-trial Non-state offenders/arrestees
								Dec '06: Of the 15,995 in local facilities, 64 are Pre-trial Non-state offenders/arrestees
								Jan '07: Of the 20,580 in state facilities, 270 are Pre-trial Non-state offenders/arrestees
								Jan '07: Of the 15,901 in local facilities, 39 are Pre-trial Non-state offenders/arrestees
								Feb '07: Of the 20,577 in state facilities, 213 are Pre-trial Non-state offender/arrestees

YEAR		STATE FACILITIES	LOCAL FACILITIES	CONTRACT TWP	TOTAL CUSTODY POPULATION			Cause of Significant Change
2007	JAN	20580	15901		36481	-329	-0.89%	Feb '07: Of the 15,942 in local facilities, 13 are Pre-trial Non-state offenders/arrestees
	FEB	20577	15942		36519	38	0.10%	Mar '07: Of the 20,596 in state facilities, 178 are Pre-trial Non-state offenders/arrestees
	MAR	20596	16066		36662	143	0.39%	Apr '07: Of the 20,795 in state facilities, 231 are Pre-trial Non-state offenders/arrestees
	APR	20795	16093		36888	226	0.62%	Apr '07: Of the 16,093 in local facilities, 1 is a Pre-trial Non-state offender/arrestee
	MAY	20772	16097		36869	-19	-0.05%	May '07: Of the 20,772 in state facilities, 217 are Pre-trial Non-state offenders/arrestees
	JUN	20,869	16121		36990	121	0.33%	May '07: Of the 16,097 in local facilities, 1 is a Pre-trial Non-state offender/arrestee
	JUL	20790	16,335		37125	135	0.36%	June '07: Of the 20,869 in state facilities, 203 are Pre-trial Non-state offenders/arrestees
	AUG	20750	16625		37375	250	0.67%	June '07: Of the 16,121 in local facilities, 1 is a Pre-trial Non-state offender/arrestee
	SEP	20700	16665		37365	-10	-0.03%	July '07: Of the 20,790 in state facilities, 214 are Pre-trial Non-state offenders/arrestees
	OCT	20600	17051		37651	286	0.77%	July '07: Of the 16,335 in local facilities, 1 is a Pre-trial Non-state offender/arrestee
	NOV	20632	17000		37632	-19	-0.05%	Aug '07: Of the 20,750 in state facilities, 181 are Pre-trial Non-state offenders/arrestees
	DEC	20461	17035		37496	-136	-0.36%	Aug '07: Of the 16,625 in local facilities, 1 is a Pre-trial Non-state offender/arrestee
2008	JAN	20507	17060		37567	71	0.19%	Oct '07: Of the 20,750 in state facilities, 181 are Pre-trial Non-state offenders/arrestees
	FEB	20575	17024		37599	32	0.09%	Oct '07: Of the 16,625 in local facilities, 1 is a Pre-trial Non-state offender/arrestee
	MAR	20537	17360		37897	298	0.79%	Oct '07: Of the 20,600 in state facilities, 173 are Pre-trial Non-state offenders/arrestees
	APR	20671	17168		37839	-58	-0.15%	Nov '07: Of the 17,051 in local facilities, 1 is a Pre-trial Non-state offender/arrestee
	MAY	20644	17322		37966	127	0.34%	Nov '07: Of the 20,632 in state facilities, 217 are Pre-trial Non-state offenders/arrestees
	JUN	20929	17347		38276	310	0.82%	Nov '07: Of the 17,000 in local facilities, 1 is a Pre-trial Non-state offender/arrestee
	JUL	20782	17,455		38237	-39	-0.10%	Dec '07: Of the 20,461 in state facilities, 198 are Pre-trial Non-state offenders/arrestees
	AUG	20887	17716		38603	366	0.96%	Dec '07: Of the 17,034 in local facilities, 1 is a Pre-trial Non-state offender/arrestee
	SEP	21673	17493		39166	563	1.46%	Jan '08: Of the 20,507 in state facilities, 199 are physically located in Bureau of Prisons in Florida
	OCT	21199	17604		38803	-363	-0.93%	Jan '08: Of the 17,060 in local facilities, 1 is a Pre-trial Non-state offenders/arrestees
	NOV	20997	17559		38556	-247	-0.64%	Feb '08: Of the 20,575 in state facilities, 200 are Pre-trial Non-state offenders/arrestees
	DEC	20857	17371		38228	-328	-0.85%	Feb '08: Of the 17,024 in local facilities, 1 is a Pre-trial Non-state offender/arrestee
2009	JAN	19698	17565	1111*	38374	146	0.38%	Mar '08: Of the 20537 in state facilities, 144 are Pre-trial Non-state offenders/arrestees
	FEB	19802	17683	1110	38595	221	0.58%	Mar '08: As of this month, local facilities are no longer housing Pre-trial Non-state offenders/arrestees
	MAR	19868	17988	1123	38979	384	0.99%	Apr '08: Of the 20,671 in state facilities, 200 are Pre-trial Non-state offenders/arrestees
	APR	19266	18298	1161	38725	-254	-0.65%	Apr '08: Of the 20,644 in state facilities, 152 are Pre-trial Non-state offenders/arrestees
	MAY	19252	18533	1129	38914	189	0.49%	May '08: Of the 20,622 in state facilities, 307 are Pre-trial Non-state offenders/arrestees
	JUN	19301	18420	1065	38786	-128	-0.33%	May '08: Of the 20,644 in state facilities, 152 are Pre-trial Non-state offenders/arrestees
	JUL	19187	18723	1099	39009	223	0.57%	June '08: Of the 20,622 in state facilities, 307 are Pre-trial Non-state offenders/arrestees
	AUG	19003	19350	1091	39444	435	1.12%	July '08: Of the 20,887 in state facilities, 193 are Pre-trial Non-state offenders/arrestees
	SEP	19013	19634	1079	39726	282	0.71%	Aug '08: Of the 21,673 in state facilities, 1,199 are Pre-trial Non-state offenders/arrestees
	OCT	19003	19923	1038	39964	238	0.60%	Sept '08: Of the 21,673 in state facilities, 1,199 are Pre-trial Non-state offenders/arrestees
	NOV	19024	19869	1034	39927	-37	-0.09%	Oct '08: Of the 21,199 in state facilities, 618 are Pre-trial Non-state offenders/arrestees
	DEC	18896	19891	993	39780	-147	-0.37%	Nov '08: Of the 20,997 in state facilities, 615 are Pre-trial Non-state offenders/arrestees
2010	JAN	18774	20059	994	39827	47	0.12%	Dec. '08: Of the 20,857 in state facilities, 577 are Pre-trial Non-state offenders/arrestees
	FEB	18697	20207	981	39885	58	0.15%	Ending of George Washington University Projections
	MAR	18868	20201	1007	40076	191	0.48%	*Effective 1/1/09 Budgeted projections have been used and contract transitional work program was separated out from State Facilities.
	APR	18928	20044	1016	39988	-88	-0.22%	
	MAY	18863	20122	995	39980	-8	-0.02%	
	JUN	18963	19827	1032	39822	-158	-0.40%	
	JUL	18973	19651	1055	39679	-143	-0.36%	
	AUG	18944	19865	1104	39913	234	0.59%	
	SEP	19103	19964	1126	40193	280	0.70%	
	OCT	19041	19675	1118	39834	-359	-0.89%	
	NOV	19070	19410	1138	39618	-216	-0.54%	
	DEC	19008	19287	1096	39391	-227	-0.57%	
2011	JAN	18983	19373	1120	39476	85	0.22%	
	FEB	18978	19460	1150	39588	112	0.28%	
	MAR	18896	19759	997	39652	64	0.16%	
	APR	18628	20016	1023	39667	15	0.04%	
	MAY	18137	20641	988	39766	99	0.25%	May '11: Threat of the flooding of the Mississippi River occurred on 5/9/11, LSP offenders being evacuated to other state facilities, therefore intakes from parish prisons were suspended for 7 weeks.
	JUN	17980	20709	994	39683	-83	-0.21%	
	JUL	18269	20335	1006	39610	-73	-0.18%	
	AUG	18690	20169	982	39841	231	0.58%	
	SEP	18779	20296	1004	40079	238	0.60%	
	OCT	18786	20334	1005	40125	46	0.11%	
	NOV	18843	20299	999	40141	16	0.04%	
	DEC	18843	19892	974	39709	-432	-1.08%	
2012	JAN	18825	20014	989	39828	119	0.30%	
	FEB	18818	20314	976	40108	280	0.70%	
	MAR	18765	20684	971	40420	312	0.78%	
	APR	18732	20630	959	40321	-99	-0.24%	
	MAY	18561	20988	989	40538	217	0.54%	
	JUN	18236	21230	994	40460	-78	-0.19%	
	JUL	18124	21257	1005	40386	-74	-0.18%	
	AUG	18236	21063	976	40275	-111	-0.27%	
	SEP	18271	21289	1008	40568	293	0.73%	
	OCT	18194	21317	1008	40519	-49	-0.12%	
	NOV	18216	21256	979	40451	-68	-0.17%	
	DEC	18599	20624	947	40170	-281	-0.69%	

YEAR		STATE FACILITIES	LOCAL FACILITIES	CONTRACT TWP	TOTAL CUSTODY POPULATION			Cause of Significant Change
2013	JAN	18611	20466	962	40039	-131	-0.33%	
	FEB	18687	20446	963	40096	57	0.14%	
	MAR	18671	20413	941	40025	-71	-0.18%	
	APR	18666	20305	959	39930	-95	-0.24%	
	MAY	18604	20409	928	39941	11	0.03%	
	JUN	18703	20315	908	39926	-15	-0.04%	
	JUL	18870	19860	913	39643	-283	-0.71%	
	AUG	18828	19854	977	39659	16	0.04%	
	SEP	18894	19867	995	39756	97	0.24%	
	OCT	18837	19833	1022	39692	-64	-0.16%	
	NOV	18842	19693	1017	39552	-140	-0.35%	
	DEC	18913	19393	993	39299	-253	-0.64%	
2014	JAN	18923	19292	964	39179	-120	-0.31%	
	FEB	18992	19431	955	39378	199	0.51%	
	MAR	18802	19499	977	39278	-100	-0.25%	
	APR	18757	19429	957	39143	-135	-0.34%	
	MAY	18753	19531	950	39234	91	0.23%	
	JUN	18763	19366	933	39062	-172	-0.44%	
	JUL	18787	19301	935	39023	-39	-0.10%	
	AUG	18774	19475	963	39212	189	0.48%	
	SEP	18778	19491	942	39211	-1	0.00%	
	OCT	18853	19128	941	38922	-289	-0.74%	
	NOV	18900	18911	926	38737	-185	-0.48%	
	DEC	18787	18308	935	38030	-707	-1.83%	
2015	JAN	18767	18027	945	37739	-291	-0.77%	
	FEB	18611	17874	988	37473	-266	-0.70%	
	MAR	18601	18050	1000	37651	178	0.48%	
	APR	18247	18169	1036	37452	-199	-0.53%	
	MAY	18296	18086	1019	37401	-51	-0.14%	
	JUN	18256	18011	1033	37300	-101	-0.27%	
	JUL	18091	17794	1054	36939	-361	-0.97%	
	AUG	18093	17758	1059	36910	-29	-0.08%	
	SEP	18157	17653	1064	36874	-36	-0.10%	
	OCT	18321	17594	957	36872	-2	-0.01%	
	NOV	18425	17069	1101	36595	-277	-0.75%	
	DEC	18430	16877	1070	36377	-218	-0.60%	
2016	JAN	18,496	16973	1064	36533	156	0.43%	
	FEB	18,474	16977	1053	36504	-29	-0.08%	
	MAR	18,542	16872	1049	36463	-41	-0.11%	
	APR	18,622	16605	1027	36254	-209	-0.57%	
	MAY	18,567	16769	1054	36390	136	0.38%	
	JUN	18,612	16646	1022	36280	-110	-0.30%	
	JUL	15,314	19743	1065	36122	-158	-0.44%	Jul '16- ALC and WNC classed as local facilities
	AUG	14,230	20631	1034	35895	-227	-0.63%	Aug '16- Flooding caused evacuation of LCIW
	SEP	14,988	20238	969	36195	300	0.84%	
	OCT	15,095	20220	1020	36335	140	0.39%	
	NOV	15,174	19875	1008	36057	-278	-0.77%	
	DEC	15,162	19504	1016	35682	-375	-1.04%	
2017	JAN	15,191	19,549	962	35702	20	0.06%	
	FEB	15,098	19,320	1120	35538	-164	-0.46%	
	MAR	14,926	19,690	1152	35768	230	0.65%	
	APR	14,893	19,639	1168	35700	-68	-0.19%	
	MAY	14,868	19,819	1119	35806	106	0.30%	
	JUN	14,933	19,542	1107	35582	-224	-0.63%	
	JUL	14,882	19,540	1085	35507	-75	-0.21%	
	AUG	14,869	19,034	1079	34982	-525	-1.48%	Sept '17 ALC became a state facility
	SEP	15,725	18,211	1065	35001	19	0.05%	**Actual data depicted to this point
	OCT	15,188	20,175	1000	36363	1362	3.89%	Projected figures start
	NOV	15,188	20,159	1000	36347	-15	-0.04%	
	DEC	15,188	20,146	1000	36334	-13	-0.04%	
2018	JAN	15,524	19,812	1000	36336	2	0.01%	
	FEB	15,524	19,837	1000	36361	25	0.07%	
	MAR	15,524	19,815	1000	36339	-23	-0.06%	
	APR	15,524	19,851	1000	36375	36	0.10%	
	MAY	15,524	19,893	1000	36417	42	0.12%	
	JUN	15,524	19,944	1000	36468	51	0.14%	
	JUL	15,524	19,955	1000	36479	11	0.03%	
	AUG	15,524	19,973	1000	36497	18	0.05%	
	SEP	15,524	19,963	1000	36487	-10	-0.03%	
	OCT	15,524	20,031	1000	36555	68	0.19%	
	NOV	15,524	20,124	1000	36648	93	0.25%	
	DEC	15,524	20,196	1000	36720	72	0.20%	

YEAR		STATE FACILITIES	LOCAL FACILITIES	CONTRACT TWP	TOTAL CUSTODY POPULATION		Cause of Significant Change
2019	JAN	15,524	20,276	1,000	36,800	80	0.20%
	FEB	15,524	20,316	1,000	36,840	40	0.11%
	MAR	15,524	20,257	1,000	36,781	-58	-0.16%
	APR	15,524	20,304	1,000	36,828	47	0.13%
	MAY	15,524	20,343	1,000	36,867	39	0.11%
	JUN	15,524	20,390	1,000	36,914	47	0.13%
	JUL	15,524	20,416	1,000	36,940	26	0.07%
	AUG	15,524	20,465	1,000	36,989	49	0.13%
	SEP	15,524	20,443	1,000	36,967	-22	-0.06%
	OCT	15,524	20,461	1,000	36,985	17	0.05%
	NOV	15,524	20,484	1,000	37,008	23	0.06%
	DEC	15,524	20,520	1,000	37,044	36	0.10%
2020	JAN	15,524	20,534	1,000	37,058	14	0.04%
	FEB	15,524	20,559	1,000	37,083	24	0.07%
	MAR	15,524	20,498	1,000	37,022	-60	-0.16%
	APR	15,524	20,516	1,000	37,040	17	0.05%
	MAY	15,524	20,512	1,000	37,036	-3	-0.01%
	JUN	15,524	20,527	1,000	37,051	15	0.04%
	JUL	15,524	20,530	1,000	37,054	3	0.01%
	AUG	15,524	20,527	1,000	37,051	-3	-0.01%
	SEP	15,524	20,472	1,000	36,996	-55	-0.15%
	OCT	15,524	20,488	1,000	37,012	16	0.04%
	NOV	15,524	20,492	1,000	37,016	4	0.01%
	DEC	15,524	20,506	1,000	37,030	14	0.04%
2021	JAN	15,524	20,539	1,000	37,063	33	0.09%
	FEB	15,524	20,560	1,000	37,084	21	0.06%
	MAR	15,524	20,471	1,000	36,995	-89	-0.24%
	APR	15,524	20,481	1,000	37,005	10	0.03%
	MAY	15,524	20,487	1,000	37,011	6	0.02%
	JUN	15,524	20,476	1,000	37,000	-11	-0.03%
	JUL	15,524	20,465	1,000	36,989	-11	-0.03%
	AUG	15,524	20,474	1,000	36,998	9	0.03%
	SEP	15,524	20,374	1,000	36,898	-100	-0.27%
	OCT	15,524	20,393	1,000	36,917	18	0.05%
	NOV	15,524	20,379	1,000	36,903	-14	-0.04%
	DEC	15,524	20,386	1,000	36,910	7	0.02%
2022	JAN	15,524	20,397	1,000	36,921	12	0.03%
	FEB	15,524	20,404	1,000	36,928	7	0.02%
	MAR	15,524	20,417	1,000	36,941	13	0.04%
	APR	15,524	20,425	1,000	36,949	8	0.02%
	MAY	15,524	20,415	1,000	36,939	-10	-0.03%
	JUN	15,524	20,424	1,000	36,948	9	0.02%
	JUL	15,524	20,429	1,000	36,953	5	0.01%
	AUG	15,524	20,417	1,000	36,941	-12	-0.03%
	SEP	15,524	20,431	1,000	36,955	14	0.04%
	OCT	15,524	20,437	1,000	36,961	6	0.02%
	NOV	15,524	20,426	1,000	36,950	-11	-0.03%
	DEC	15,524	20,428	1,000	36,952	2	0.01%
2023	JAN	15,524	20,421	1,000	36,945	-7	-0.02%
	FEB	15,524	20,410	1,000	36,934	-12	-0.03%
	MAR	15,524	20,409	1,000	36,933	0	0.00%
	APR	15,524	20,404	1,000	36,928	-5	-0.01%
	MAY	15,524	20,400	1,000	36,924	-4	-0.01%
	JUN	15,524	20,388	1,000	36,912	-12	-0.03%
	JUL	15,524	20,387	1,000	36,911	-1	0.00%
	AUG	15,524	20,379	1,000	36,903	-8	-0.02%
	SEP	15,524	20,361	1,000	36,885	-18	-0.05%
	OCT	15,524	20,341	1,000	36,865	-20	-0.06%
	NOV	15,524	20,334	1,000	36,858	-6	-0.02%
	DEC	15,524	20,323	1,000	36,847	-11	-0.03%

DATE: 9/27/2017
DEPARTMENT OF PUBLIC SAFETY AND CORRECTIONS
WEEKLY VACANCY AND RELEASE REPORT

INSTITUTIONS	OPERATIONAL CAPACITY	ASSIGNED	PHYSICALLY PRESENT	NON DOC/ PARISH HOLDS	CURRENT VACANCIES	PROJECTED RELEASES
WARDEN'S REGION 1						
DWCC *1	1174	1174	1171	0	0	4
PROTECTION (WCC)	50	53	53	0	-3	0
SUBTOTAL DWCC	1224	1227	1224	0	-3	4
DCI	1378	1405	1402	1	-28	1
Youthful Offender	40	14	14	0	26	0
UNIT 3	242	224	224	0	18	0
UNIT 4	140	135	135	0	5	0
SUBTOTAL DCI	1800	1778	1775	1	21	1
EHCC - GEN. POP.	1510	1525	1518	0	-15	1
SKILLED NURSING UNIT *4	54	58	58	0	-4	0
HRDC	411	416	402	5	-10	3
SUBTOTAL HCC	1975	1999	1978	5	-29	4
LSP	6183	5964	5944	5	214	3
NURSING UNIT 2	34	32	32	0	2	0
LSP/LCIW	5	5	5	1	-1	0
DEATH ROW	90	72	72	0	18	0
SUBTOTAL LSP	6312	6073	6053	6	233	3
REGION 1 TOTAL	11311	11077	11030	12	222	12
WARDEN'S REGION 2						
RLCC	1693	1754	1747	0	-61	7
JLDCC	115	55	55	0	60	0
SUBTOTAL AVC	1808	1809	1802	0	-1	7
LCIW - GEN. POP. *7,8	912	0	0	0	912	0
FRDC *8	20	0	0	0	20	0
DEATH ROW *8	4	0	0	0	4	0
LCIW/EHCC	296	263	261	0	33	1
LCIW/JETSON	304	310	304	0	-6	0
SUBTOTAL LCIW	1536	573	565	0	963	1
RCC *6	1314	1313	1310	0	1	4
STATE POLICE	155	136	136	0	19	0
ALC	872	817	816	0	55	1
WNC *10	1576	1469	1469	0	107	2
REGION 2 TOTAL	7261	6117	6098	0	1144	15
TOTAL INSTITUTION *10	16996	14908	14843	12	1204	24
TOTAL WNC	1576	2286	2285	0	162	3
TOTAL	18572	17194	17128	12	1366	27
CONTRACT TWP						
CEDARWOOD MANOR	100	85	85	0	15	1
COF/MON-MEN	162	105	105	0	57	0
EFL TWP	75	70	70	0	5	1
LAFOURCHE TWP	174	140	140	0	34	1
WFL TWP	60	56	56	0	4	0
RAPIDES TWP *2	200	154	154	0	46	0
SOUTHWEST TWP	350	283	283	0	67	0
WBR TWP *3	185	172	172	0	13	1
TOTAL CONTRACT TWP *5	1306	1065	1065	0	241	4
GRAND TOTAL	19878	18259	18193	12	1607	31

*1 Includes 5 WRDC.

*2 RAP TWP Co-op agreement is for 245.

*3 WBR TWP Co-op agreement is for 185.

*4 Rated capacity is 64

*5 Totals are included on the CFACILITY report

*6 Physically present includes 0 intensive incarceration offenders

*7 Physically present includes 0 intensive incarceration offenders

*8 Currently empty due to evacuation because of flooding.

*9 There are 35 Orleans non DOC offenders in the HSU dorm not included in Hunt totals

*10 WNC is not included in the Total Institution counts

DEPARTMENT OF PUBLIC SAFETY AND CORRECTIONS - CORRECTION SERVICES

AS OF 9/29/2017

NORTHWEST REGION
LT. COL. SCOTT COTTRELL, DWCC

	OPERATIONAL	#DOC	#DOC	#DOC MALE	#DOC FEMALE	TOTAL#DOC	#DOC	GAIN/LOSS	OUT OF	PRE-	OTHER	OTHER	TOTAL	WKL		
	CAPACITY	MALES	FEMALES	TWP	TWP	TWP	INMATES	PREV WEEK	STATE	FEDS	TRIALS	PARISH	TOTAL	VACANCIES	TOTAL	DOC MAX
BIENVILLE PARISH JAIL AND TWP	53	12	0	0	0	0	12	0	0	1	22	0	23	12	18	12
BOSSIER MAX	544	32	8	0	0	0	40	(2)	5	3	410	48	466	18	38	40
BOSSIER MED	664	583	0	0	0	0	583	(4)	0	40	0	12	52	(23)	29	599
BOSSIER SHIRP 90 DAY RE1	120	120	0	0	0	0	120	0	0	0	0	0	0	0	0	120
BOSSIER SHIRP 90 DAY RE2	215	199	0	0	0	0	199	(4)	0	0	0	0	0	0	16	199
BOSSIER S. O. TREATMENT CENTER	100	98	0	0	0	0	98	3	0	0	0	0	0	0	2	98
BOSSIER PARISH TOTAL	1,643	1,032	8	0	0	0	1,040	(7)	5	43	410	60	518	(5)	85	1,056
CADDO CORRECTIONAL CENTER	1,500	349	32	0	0	0	381	19	3	37	865	44	949	101	170	381
CADDO TWP	240	67	0	110	0	110	177	5	0	0	0	0	0	130	63	177
CADDO PARISH TOTAL	1,740	416	32	110	0	110	558	24	3	37	865	44	949	231	233	558
CLAIBORNE DETENTION CENTER AND TWP	590	377	0	3	0	3	380	(12)	0	0	65	3	68	77	142	457
CLAIBORNE PARISH JAIL	65	0	12	0	0	0	12	1	0	0	25	0	25	5	28	12
CLAIBORNE PARISH TOTAL	655	377	12	3	0	3	392	(11)	0	0	90	3	93	82	170	469
DESOTO PARISH DETENTION CENTER	151	25	0	0	0	0	25	0	0	0	0	84	84	32	42	25
JACKSON PARISH CORRECTIONAL CENTER AND TWP *2,4	1,252	849	52	55	0	55	956	64	0	0	222	70	292	160	4	956
NATCHITOCHE PARISH DETENTION CENTER	515	372	0	0	0	0	372	(4)	0	13	109	8	130	45	13	388
NATCHITOCHE PARISH TWP	48	0	0	13	0	13	13	(1)	0	0	0	0	0	0	35	13
NATCHITOCHE PARISH	563	372	0	13	0	13	385	(5)	0	13	109	8	130	45	48	401
RED RIVER PARISH JAIL	76	25	0	0	0	0	25	2	0	0	22	1	23	3	28	25
SABINE PARISH DETENTION CENTER	134	61	0	0	0	0	61	1	0	0	0	59	59	10	14	61
SABINE PARISH WOMEN'S FACILITY	29	0	14	0	0	0	14	0	0	0	0	11	11	8	4	14
SABINE PARISH TOTAL	163	61	14	0	0	0	75	1	0	0	0	70	70	18	18	75
WEBSTER - BAYOU DORCHEAT CORRECTIONAL CENTER AND TWP	444	241	0	69	0	69	310	(4)	0	0	92	5	97	37	37	314
WEBSTER PARISH JAIL	61	0	25	0	2	2	27	(1)	0	0	20	1	21	25	13	28
WEBSTER PARISH TOTAL	505	241	25	69	2	71	337	(5)	0	0	112	6	118	62	50	342
WINN PARISH JAIL	47	23	0	0	0	0	23	1	0	0	20	0	20	15	4	24
WINNFIELD CITY JAIL	30	7	1	0	0	0	8	0	0	0	8	0	8	15	14	8
WINN PARISH TOTAL	77	30	1	0	0	0	31	1	0	0	28	0	28	30	18	32
SUBTOTAL	6,878	3,440	144	250	2	252	3,836	64	8	94	1,880	346	2,328	670	714	3,951

NORTHEAST REGION																
TYRONE MAYS, DWCC																
	OPERATIONAL	#DOC	#DOC	#DOC MALE	#DOC FEMALE	TOTAL#DOC	#DOC	GAIN/LOSS	OUT OF		PRE-		OTHER	OTHER	TOTAL	WKLY
	CAPACITY	MALES	FEMALES	TWP	TWP	TWP	INMATES	PREV WEEK	STATE	FEDS	TRIALS	PARISH	TOTAL	VACANCIES	VACANCIES	DOC MAX
CALDWELL CORRECTIONAL CENTER	351	352	0	0	0	0	352	9	0	0	0	7	7	32	(8)	359
CALDWELL CORRECTIONAL CENTER SOUTH	249	192	20	0	0	0	212	13	0	0	0	33	33	216	4	245
CALDWELL PARISH TOTAL	600	544	20	0	0	0	564	22	0	0	0	40	40	248	(4)	604
EAST CARROLL RIVERBEND PHASE I	252	0	0	0	0	0	0	0	0	0	242	0	242	10	10	0
EAST CARROLL RIVERBEND PHASE II	416	75	0	0	0	0	75	(13)	0	0	338	0	338	(272)	3	88
EAST CARROLL RIVERBEND PHASE III	660	660	0	0	0	0	660	0	0	0	0	0	0	110	0	660
EAST CARROLL PARISH TOTAL	1,328	735	0	0	0	0	735	(13)	0	0	580	0	580	(152)	13	748
FRANKLIN PARISH DETENTION CENTER AND TWP	834	731	12	29	0	29	772	9	0	0	70	11	81	(22)	(19)	772
LINCOLN PARISH DETENTION CENTER AND TWP	241	123	5	20	0	20	148	(2)	0	0	84	12	96	(5)	(3)	148
MADISON PARISH CORRECTIONAL CENTER	334	242	0	0	0	0	242	(9)	0	0	0	0	0	44	92	251
MADISON PARISH JAIL	36	2	0	0	0	0	2	0	0	0	25	2	27	5	7	2
MADISON PARISH SOUTHERN CORRECTIONAL FACILITY	564	400	0	0	0	0	400	(3)	0	0	0	36	36	28	128	402
MADISON (LOUISIANA TRANSITION CENTER FOR WOMEN)	548	0	512	0	0	0	512	2	0	0	10	0	10	(10)	26	512
MADISON PARISH TOTAL	1,482	644	512	0	0	0	1,156	(10)	0	0	35	38	73	67	253	1,167
MOREHOUSE PARISH DETENTION CENTER AND TWP	272	164	0	94	0	94	258	(4)	0	0	2	0	2	0	12	258
MOREHOUSE PARISH JAIL AND ANNEX	264	117	3	0	0	0	120	(2)	0	0	0	117	117	(13)	27	120
MOREHOUSE PARISH TOTAL	536	281	3	94	0	94	378	(6)	0	0	2	117	119	(13)	39	378
CITY OF FAITH TWP *3	162	0	0	104	0	104	104	(1)	0	22	0	0	22	(22)	36	104
OUACHITA CORRECTIONAL CENTER AND TWP	1,112	296	19	0	0	0	315	(2)	0	0	516	57	573	199	224	315
OUACHITA PARISH FEMALE TWP	40	0	0	0	40	40	40	0	0	0	0	0	0	12	0	40
OUACHITA PARISH TWP	250	26	0	145	0	145	171	9	0	0	0	0	0	0	79	171
RICHWOOD TOWN OF AND TWP *2,4	1,127	782	0	113	0	113	895	(13)	0	0	0	42	42	135	190	959
OUACHITA PARISH TOTAL	2,691	1,104	19	362	40	402	1,525	(7)	0	22	516	99	637	324	529	1,589
RICHLAND PARISH DETENTION CENTER AND TWP	782	258	171	52	57	109	538	(2)	0	5	170	8	183	(1)	61	545
TENSAS PARISH DETENTION CENTER-WATERPROOF	600	329	35	21	0	21	385	3	0	0	92	13	105	225	110	386
UNION PARISH DETENTION CENTER AND TWP	388	179	0	83	2	85	264	0	0	0	115	2	117	31	7	280
WEST CARROLL PARISH JAIL	26	13	0	0	0	0	13	0	0	0	0	0	0	14	13	13
SUBTOTAL	9,508	4,941	777	661	99	760	6,478	(6)	0	27	1,664	340	2,031	716	999	6,630

CENTRAL REGION																
COL. JEFF O'NEAL, AVC/JLDCC OPERATIONS																
OPERATIONAL	#DOC	#DOC	#DOC MALE	#DOC FEMALE	TOTAL#DOC	#DOC	GAIN/LOSS	OUT OF		PRE-	OTHER	OTHER	TOTAL	WKL		
CAPACITY	MALES	FEMALES	TWP	TWP	TWP	INMATES	PREV WEEK	STATE	FEDS	TRIALS	PARISH	TOTAL	VACANCIES	TOTAL	VACANCIES	DOC MAX
AVOYELLES MARKSVILLE DETENTION CENTER (DC 1)	438	300	0	27	0	27	327	(9)	0	0	0	111	111	42	0	332
AVOYELLES WOMEN'S CORRECTIONAL CENTER (DC 3) AND TWP	317	0	143	0	28	28	171	(5)	0	5	0	88	93	(26)	53	175
AVOYELLES PARISH TOTAL	755	300	143	27	28	55	498	(14)	0	5	0	199	204	16	53	507
BEAUREGARD PARISH JAIL COMPLEX	161	4	1	0	0	0	5	1	0	0	0	140	140	(11)	16	5
SOUTHWEST TWP *3	400	56	0	277	0	277	333	(13)	0	0	0	0	0	0	67	333
BEAUREGARD PARISH TOTAL	561	60	1	277	0	277	338	(12)	0	0	0	140	140	(11)	83	338
CATAHOULA CORRECTIONAL CENTER AND TWP *2,4	830	271	15	5	0	5	291	10	0	0	477	33	510	(299)	29	291
CATAHOULA PARISH JAIL	32	5	0	0	0	0	5	0	0	0	18	0	18	(2)	9	5
CATAHOULA PARISH TOTAL	862	276	15	5	0	5	296	10	0	0	495	33	528	(301)	38	296
CONCORDIA PARISH CORRECTIONAL FACILITY	530	312	0	0	0	0	312	(3)	0	0	29	0	29	51	189	323
CONCORDIA PARISH CORRECTIONAL FACILITY TWP	224	0	0	38	0	38	38	4	0	0	0	0	0	0	186	38
CONCORDIA PARISH JAIL	48	5	0	0	0	0	5	0	0	0	32	0	32	11	11	5
RIVER CORRECTIONAL CENTER (CONCORDIA #2) *2	602	492	0	0	0	0	492	7	0	0	33	0	33	(33)	77	492
CONCORDIA PARISH TOTAL	1,404	809	0	38	0	38	847	8	0	0	94	0	94	29	463	858
GRANT PARISH DETENTION CENTER	106	51	0	0	0	0	51	0	0	0	46	4	50	2	5	51
LASALLE CORRECTIONAL CENTER AND TWP *2,4	757	675	0	13	0	13	688	(3)	0	0	68	4	72	256	(3)	695
LASALLE PARISH JAIL	29	5	0	0	0	0	5	0	0	0	9	0	9	13	15	5
LASALLE PARISH TOTAL	786	680	0	13	0	13	693	(3)	0	0	77	4	81	269	12	700
RAPIDES PARISH DETENTION CENTER - 1	348	0	0	0	0	0	0	0	4	0	327	25	356	(8)	(8)	0
RAPIDES PARISH DETENTION CENTER - 2	140	140	0	0	0	0	140	2	0	0	0	0	0	0	0	140
RAPIDES PARISH DETENTION CENTER - 3	391	310	0	0	0	0	310	5	0	11	4	4	19	42	62	315
RAPIDES PARISH CONTRACT TWP *3	200	0	0	151	0	151	151	0	0	0	0	0	0	0	49	154
RAPIDES PARISH TWP	55	0	0	51	0	51	51	1	0	0	0	0	0	0	4	51
RAPIDES PARISH TOTAL	1,134	450	0	202	0	202	652	8	4	11	331	29	375	34	107	660
VERNON CORRECTIONAL CENTER AND TWP	232	188	0	43	0	43	231	(6)	0	0	0	0	0	22	1	236
VERNON PARISH JAIL	150	5	0	0	0	0	5	0	0	0	137	0	137	8	8	5
VERNON PARISH TOTAL	382	193	0	43	0	43	236	(6)	0	0	137	0	137	30	9	241
SUBTOTAL	5,990	2,819	159	605	28	633	3,611	(9)	4	16	1,180	409	1,609	68	770	3,651

SOUTH CENTRAL REGION A.W. WAYNE MILLUS, AVC		OPERATIONAL	#DOC	#DOC	#DOC MALE	#DOC FEMALE	TOTAL#DOC	#DOC	GAIN/LOSS	OUT OF	PRE-	OTHER	OTHER	TOTAL	WKLY	
		CAPACITY	MALES	FEMALES	TWP	TWP	TWP	INMATES	PREV WEEK	STATE	FEDS	TRIALS	PARISH	TOTAL	VACANCIES	DOC MAX
ALLEN PARISH JAIL		188	7	0	0	0	0	7	(1)	0	47	87	0	134	44	47
KINDER CITY JAIL		3	2	0	0	0	0	2	0	0	0	0	0	1	1	2
ALLEN PARISH TOTAL		191	9	0	0	0	0	9	(1)	0	47	87	0	134	45	48
EVANGELINE PARISH JAIL		72	0	0	0	0	0	0	0	0	43	58	101	(59)	(29)	0
BASILE CITY JAIL		6	1	0	0	0	0	1	0	0	0	0	0	3	5	1
MAMOU CITY JAIL		10	5	0	0	0	0	5	0	0	0	0	0	4	5	5
PINE PRAIRIE DETENTION CENTER *2		1,084	0	0	0	0	0	0	0	745	0	0	745	19	339	0
VILLE PLATTE CITY JAIL		28	4	0	0	0	0	4	0	0	0	1	1	24	23	4
EVANGELINE PARISH TOTAL		1,200	10	0	0	0	0	10	0	745	43	59	847	(9)	343	10
IBERVILLE PARISH DETENTION CENTER		119	0	0	0	0	0	0	0	0	0	0	0	109	119	0
POINTE COUPEE PARISH DETENTION CENTER		209	71	0	0	0	0	71	(1)	0	0	57	57	97	81	71
ST. LANDRY PARISH JAIL		244	15	0	0	0	0	15	(1)	0	0	234	234	(10)	(5)	15
SUBTOTAL		1,963	105	0	0	0	0	105	(3)	0	792	130	350	1,272	232	586

CAPITAL REGION MEGAN WINTZ, DCI		OPERATIONAL	#DOC	#DOC	#DOC MALE	#DOC FEMALE	TOTAL#DOC	#DOC	GAIN/LOSS	OUT OF	PRE-	OTHER	OTHER	TOTAL	WKLY	
		CAPACITY	MALES	FEMALES	TWP	TWP	TWP	INMATES	PREV WEEK	STATE	FEDS	TRIALS	PARISH	TOTAL	VACANCIES	DOC MAX
EAST BATON ROUGE PARISH PRISON		1,594	85	11	0	0	0	96	14	0	4	1,122	35	1,161	333	337
EAST BATON ROUGE TWP *2,4		250	0	0	251	0	251	251	6	0	0	0	0	0	(1)	253
EAST BATON ROUGE PARISH TOTAL		1,844	85	11	251	0	251	347	20	0	4	1,122	35	1,161	333	349
LIVINGSTON PARISH JAIL		673	159	15	0	0	0	174	0	0	0	364	85	449	(106)	50
LIVINGSTON TWP *2,4		150	2	0	124	0	124	126	(8)	0	0	0	0	0	0	24
LIVINGSTON PARISH TOTAL		823	161	15	124	0	124	300	(8)	0	0	364	85	449	(106)	74
WEST BATON ROUGE PARISH JAIL		333	150	0	0	0	0	150	(1)	0	54	99	0	153	100	30
WEST BATON ROUGE SHERIFF'S TWP		77	70	0	64	0	64	134	1	0	0	0	0	0	(57)	134
WEST BATON ROUGE CONTRACT TWP *3		185	0	0	169	0	169	169	(1)	0	0	0	0	0	16	169
WEST BATON ROUGE PARISH TOTAL		595	220	0	233	0	233	453	(1)	0	54	99	0	153	100	(11)
SUBTOTAL		3,262	466	26	608	0	608	1,100	11	0	58	1,585	120	1,763	327	399

WEST FLORIDA PARISHES REGION																
MAJ. JOLI DARBONNE, LSP																
OPERATIONAL	#DOC	#DOC	#DOC MALE	#DOC FEMALE	TOTAL#DOC	#DOC	GAIN/LOSS	OUT OF		PRE-		OTHER	OTHER	TOTAL	WKL	
CAPACITY	MALES	FEMALES	TWP	TWP	TWP	INMATES	PREV WEEK	STATE	FEDS	TRIALS	PARISH	TOTAL	VACANCIES	VACANCIES	DOC MAX	
EAST FELICIANA PARISH JAIL AND TWP	167	93	0	14	0	14	107	(9)	0	0	10	42	52	15	8	107
EAST FELICIANA CONTRACT TWP *3	75	0	0	71	0	71	71	(1)	0	0	0	0	0	0	4	71
EAST FELICIANA PARISH TOTAL	242	93	0	85	0	85	178	(10)	0	0	10	42	52	15	12	178
ST. HELENA PARISH JAIL	56	4	0	0	0	0	4	(1)	0	0	37	0	37	7	15	4
TANGIPAHOA PARISH JAIL	476	99	0	0	0	0	99	(16)	0	71	263	4	338	(17)	39	115
TANGIPAHOA PARISH JAIL TWP	85	0	0	61	0	61	61	(7)	0	0	0	0	0	0	24	61
AMITE CITY JAIL	12	2	0	0	0	0	2	0	0	0	0	0	0	10	10	2
TANGIPAHOA PARISH TOTAL	573	101	0	61	0	61	162	(23)	0	71	263	4	338	(7)	73	178
WEST FELICIANA PARISH DETENTION CENTER	39	16	0	0	0	0	16	2	0	0	22	0	22	2	1	16
WEST FELICIANA TWP *2,4	216	72	0	115	0	115	187	3	0	0	0	0	0	0	29	187
WEST FELICIANA CONTRACT TWP *3	60	0	0	55	0	55	55	(2)	0	0	0	0	0	0	5	55
WEST FELICIANA PARISH TOTAL	315	88	0	170	0	170	258	3	0	0	22	0	22	2	35	258
SUBTOTAL	1,186	286	0	316	0	316	602	(31)	0	71	332	46	449	17	135	618

EAST FLORIDA PARISHES REGION																
ASST WDN BEVERLY KELLY, RCC																
OPERATIONAL	#DOC	#DOC	#DOC MALE	#DOC FEMALE	TOTAL#DOC	#DOC	GAIN/LOSS	OUT OF		PRE-		OTHER	OTHER	TOTAL	WKL	
CAPACITY	MALES	FEMALES	TWP	TWP	TWP	INMATES	PREV WEEK	STATE	FEDS	TRIALS	PARISH	TOTAL	VACANCIES	VACANCIES	DOC MAX	
ST. TAMMANY PARISH JAIL	1,192	323	26	0	0	0	349	24	0	138	519	0	657	(15)	186	351
SLIDELL CITY JAIL	35	10	0	0	0	0	10	3	0	0	10	10	7	15	10	10
ST. TAMMANY PARISH TOTAL	1,227	333	26	0	0	0	359	27	0	138	519	10	667	(8)	201	361
WASHINGTON PARISH JAIL	144	7	1	0	0	0	8	(3)	0	0	164	0	164	(20)	(28)	17
BOGALUSA CITY JAIL	36	3	0	0	0	0	3	0	0	0	26	26	7	7	3	3
WASHINGTON PARISH TOTAL	180	10	1	0	0	0	11	(3)	0	0	164	26	190	(13)	(21)	20
SUBTOTAL	1,407	343	27	0	0	0	370	24	0	138	683	36	857	(21)	180	381

SOUTHWEST REGION																
MAJ. ROBBIE BERUBE, PCC																
OPERATIONAL	#DOC	#DOC	#DOC MALE	#DOC FEMALE	TOTAL#DOC	#DOC	GAIN/LOSS	OUT OF		PRE-		OTHER	OTHER	TOTAL	WKL	
CAPACITY	MALES	FEMALES	TWP	TWP	TWP	INMATES	PREV WEEK	STATE	FEDS	TRIALS	PARISH	TOTAL	VACANCIES	VACANCIES	DOC MAX	
ACADIA PARISH DETENTION CENTER AND JUSTICE CENTER	284	19	0	0	0	0	19	2	0	0	0	147	147	37	118	24
RAYNE CITY JAIL	14	9	0	0	0	0	9	1	0	0	0	4	4	4	1	9
ACADIA PARISH TOTAL	298	28	0	0	0	0	28	3	0	0	0	151	151	41	119	33
CALCASIEU CORRECTIONAL CENTER & SHERIFF'S PRISON AND TWP	1,366	279	4	9	0	9	292	(21)	0	24	902	28	954	37	120	292
CEDARWOOD MANOR TWP *3	100	0	0	0	87	87	87	0	0	0	0	0	0	0	13	87
DEQUINCY CITY JAIL	20	9	0	0	0	0	9	0	0	0	0	0	0	10	11	9
SULPHUR CITY JAIL	30	3	0	0	0	0	3	0	0	0	6	0	6	19	21	3
CALCASIEU PARISH TOTAL	1,516	291	4	9	87	96	391	(21)	0	24	908	28	960	66	165	391
CAMERON PARISH JAIL	75	2	1	0	0	0	3	0	0	0	0	23	23	45	49	3
JEFFERSON DAVIS CORRECTIONAL CENTER	62	3	0	0	0	0	3	0	0	0	55	1	56	2	3	3
LAFAYETTE CORRECTIONAL CENTER AND ANNEX	954	346	21	0	3	3	370	8	0	20	596	87	703	41	(119)	370
LAFAYETTE TWP	206	0	0	80	0	80	80	1	0	0	0	0	0	6	126	80
LAFAYETTE PARISH TOTAL	1,160	346	21	80	3	83	450	9	0	20	596	87	703	47	7	450
VERMILION PARISH CORRECTIONAL CENTER	150	26	0	0	0	0	26	1	0	0	131	0	131	(31)	(7)	26
SUBTOTAL	3,261	696	26	89	90	179	901	(8)	0	44	1,690	290	2,024	170	336	906

SOUTHEAST REGION																
COL. MARCUS MYERS, EHCC & FRANCIS ABBOTT, LSP	OPERATIONAL CAPACITY	#DOC MALES	#DOC FEMALES	#DOC MALE TWP	#DOC FEMALE TWP	TOTAL#DOC TWP	#DOC INMATES	GAIN/LOSS PREV WEEK	OUT OF STATE	FEDS	PRE-TRIALS	PARISH	OTHER TOTAL	OTHER VACANCIES	TOTAL VACANCIES	WKLY DOC MAX
ASCENSION PARISH JAIL	572	86	1	0	0	0	87	(9)	0	22	382	18	422	0	63	96
ASSUMPTION PARISH DETENTION CENTER	80	23	0	0	0	0	23	3	0	0	78	0	78	(33)	(21)	28
IBERIA PARISH CRIMINAL JUSTICE FACILITY	512	140	9	0	0	0	149	6	1	0	253	36	290	82	73	149
JEFFERSON PARISH PRISON	1,080	37	7	0	0	0	44	6	0	0	845	46	891	129	145	44
LAFOURCHE PARISH DETENTION CENTER	244	39	8	0	0	0	47	18	0	0	149	0	149	55	48	47
LAFOURCHE PARISH JAIL - GALLIANO FACILITY	8	4	0	0	0	0	4	0	0	0	5	0	5	(4)	(1)	4
LAFOURCHE TRUSTY	24	22	0	0	0	0	22	0	0	0	0	0	0	0	2	22
LAFOURCHE CONTRACT TWP *3	174	33	0	137	0	137	170	5	0	0	0	0	0	0	4	170
LAFOURCHE PARISH TOTAL	450	98	8	137	0	137	243	23	0	0	154	0	154	51	53	243
ORLEANS PARISH PRISON	1,938	116	9	0	0	0	125	4	0	0	1,310	26	1,336	(248)	477	125
ORLEANS PARISH PRISON TWP	150	0	0	51	0	51	51	1	0	0	0	0	0	0	99	51
ORLEANS PARISH PRISON TOTAL	2,088	116	9	51	0	51	176	5	0	0	1,310	26	1,336	(248)	576	176
PLAQUEMINES PARISH DETENTION CENTER AND TWP	872	219	85	6	0	6	310	2	0	41	0	74	115	632	447	310
ST. BERNARD PARISH PRISON AND ANNEX	250	11	0	0	0	0	11	(3)	0	32	183	1	216	14	23	14
ST. CHARLES CORRECTIONAL CENTER AND TWP	628	245	5	25	0	25	275	(13)	0	89	118	10	217	111	136	278
ST. JAMES PARISH DETENTION CENTER	124	14	0	0	0	0	14	1	0	0	56	3	59	25	51	14
ST. JOHN CORRECTIONAL CENTER AND PARISH PRISON	332	90	1	0	0	0	91	(1)	0	0	104	0	104	103	137	91
ST. MARY LAW ENFORCEMENT CENTER AND TWP	320	21	0	7	0	7	28	0	0	0	165	32	197	(27)	95	29
PATTERSON CITY JAIL	37	7	0	0	0	0	7	0	0	0	0	0	0	30	30	10
ST. MARY PARISH TOTAL	357	28	0	7	0	7	35	0	0	0	165	32	197	3	125	39
ST. MARTIN PARISH CORRECTIONAL CENTER I	186	25	0	0	0	0	25	4	0	15	137	0	152	10	9	25
TERREBONNE PARISH ANNEX	68	42	0	0	0	0	42	3	0	0	0	6	6	2	20	42
TERREBONNE PARISH CRIMINAL JUSTICE COMPLEX	612	86	12	0	0	0	98	(23)	1	0	442	48	491	1	23	121
TERREBONNE PARISH TOTAL	680	128	12	0	0	0	140	(20)	1	0	442	54	497	3	43	163
SUBTOTAL	8,211	1,260	137	226	0	226	1,623	4	2	199	4,227	300	4,728	882	1,860	1,670
WNC REGION																
A. W. WAYNE MILLUS, RLCC & LT. COL. SCOTT COTTRELL, DWCC	OPERATIONAL CAPACITY	#DOC MALES	#DOC FEMALES	#DOC MALE TWP	#DOC FEMALE TWP	TOTAL#DOC TWP	#DOC INMATES	GAIN/LOSS PREV WEEK	OUT OF STATE	FEDS	PRE-TRIALS	PARISH	OTHER TOTAL	OTHER VACANCIES	TOTAL VACANCIES	WKLY DOC MAX
WNC	1,576	1,467	0	0	0	0	1,467	3	0	0	0	0	0	136	109	1,467

SUBTOTAL	1,576	1,467	0	0	0	0	1,467	3	0	0	0	0	0	136	109	1,467
----------	-------	-------	---	---	---	---	-------	---	---	---	---	---	---	-----	-----	-------

	OPERATIONAL	#DOC	#DOC	#DOC MALE	#DOC FEMALE	TOTAL#DOC	#DOC	GAIN/LOSS	OUT OF	PRE-	OTHER	OTHER	TOTAL	OTHER	TOTAL	WKLY
	CAPACITY	MALES	FEMALES	TWP	TWP	TWP	INMATES	PREV WEEK	STATE	FEDS	TRIALS	PARISH	TOTAL	VACANCIES	VACANCIES	DOC MAX
GRAND TOTAL	43,242	15,823	1,296	2,755	219	2,974	20,093	49	14	1,439	13,371	2,237	17,061	3,197	6,088	20,481

*1 NON BJJ PARTICIPANTS THAT DON'T SEND IN A WEEKLY COUNT/VACANCIES ARE SHOWN AS 0.

*2 PRIVATELY OWNED AND/OR MANAGED LOCAL JAIL FACILITY
 TOTAL DOC POPULATION OF PRIVATELY OWNED/MANAGED FACILITIES 3,886

*3 CO OP WORK RELEASE FACILITIES
 TOTAL DOC POPULATION OF CO OP FACILITIES 1,140

*4 PRIVATELY OWNED AND/OR MANAGED TWP
 TOTAL DOC POPULATION OF PRIVATELY OWNED/MANAGED TWPS 750

VACANT FACILITIES	OPERATIONAL CAPACITY
BOSSIER MIN	248
CALDWELL PARISH JAIL	45
EAST CARROLL DETENTION CENTER	428
MADISON PARISH DETENTION CENTER AND TWP	268
TENSAS - JB EVANS CORRECTIONAL CENTER *1,2	388
WEST CARROLL DETENTION CENTER *2,6	732
AVOUELLES BUNKIE DETENTION CENTER (DC 2) AND TWP	322
AVOUELLES SIMMESPORT CORRECTIONAL CENTER (DC 4)	298
SOUTH LOUISIANA CORRECTIONAL CENTER *2	1,017
ST. TAMMANY TWP TRUSTEES FOR ST. TAMMANY SO	37
ST. TAMMANY CONTRACT TWP *3	70
ST. TAMMANY INHOUSE TWP	65
NORTHSHORE TWP	235
JENNINGS CITY JAIL	40
ST. MARY CORRECTIONAL CENTER	115
ST. MARTIN PARISH CORRECTIONAL CENTER II *6	365
ORLEANS HOUSE OF DETENTION	856
ORLEANS PARISH PRISON	831
ORLEANS CONCHETTA	408
ORLEANS TEMPLEMAN V	316
IBERIA TWP *2,4	158
TERREBONNE SHERIFF TWP *2,4	244