

# DEPARTMENT OF PUBLIC SAFETY AND CORRECTIONS

## RECIDIVISM IN ADULT CORRECTIONS (PERCENT RETURN)

March 18, 2016

**RECIDIVISM:** RETURN TO CUSTODY FOLLOWING CONVICTION FOR A NEW FELONY OR TECHNICAL REVOCATION OF SUPERVISION AFTER HAVING BEEN RELEASED FROM INCARCERATION THROUGH COMPLETED SENTENCE, RELEASED ON PAROLE, CONDITIONAL RELEASE, OR SPLIT PROBATION SENTENCE. OFFENDERS RELEASED TO A DETAINER, RELEASED IN ERROR, DECEASED, OR TRANSFERRED TO ANOTHER JURISDICTION ARE NOT INCLUDED. AN OFFENDER MAY BE RELEASED MULTIPLE TIMES BUT IS ONLY COUNTED ONCE PER RELEASE YEAR.

**OFFENDERS ARE TRACKED FOR A PERIOD OF TIME FROM DATE OF RELEASE BASED ON THE YEAR OF RETURN :**

**1st Year Returns:** 12 months  
**2nd Year Returns:** 24 months  
**3rd Year Returns:** 36 months  
**4th Year Returns:** 48 months  
**5th Year Returns:** 60 months

RELEASE YR.:	1st Year (2014)	2nd Year (2013)	3rd Year (2012)	4th Year (2011)	5th Year (2010)
<b>Total Population</b>	15.2%	27.5%	35.3%	40.3%	42.2%
<b>State Facilities</b>	13.0%	25.4%	35.4%	40.5%	43.6%
<b>Local Facilities</b>	17.2%	30.3%	37.5%	42.0%	44.3%
<b>Transitional Work Programs</b>	11.5%	22.2%	31.2%	37.0%	37.1%
<b>Impact</b>	12.8%*	26.8%*	38.9%	41.7%	43.1%
<b>Blue Walters</b>	14.8%	31.3%	38.6%	44.6%	42.9%
<b>Parole Board Releases</b>	8.4%	18.8%	30.3%	29.2%	30.2%
<b>Sex Offenders</b>	9.3%	20.0%	26.5%	32.2%	40.2%
<b>Education</b>	8.6%	17.6%	32.9%	36.2%	39.2%
<b>Female</b>	9.4%	17.7%	24.7%	25.8%	28.1%

## DEPARTMENT OF PUBLIC SAFETY AND CORRECTIONS

### RECIDIVISM IN ADULT CORRECTIONS (TOTAL POPULATION)

March 18, 2016

**RECIDIVISM:** RETURN TO CUSTODY FOLLOWING CONVICTION FOR A NEW FELONY OR TECHNICAL REVOCATION OF SUPERVISION AFTER HAVING BEEN RELEASED FROM INCARCERATION THROUGH COMPLETED SENTENCE, RELEASED ON PAROLE, CONDITIONAL RELEASE, OR SPLIT PROBATION SENTENCE. OFFENDERS RELEASED TO A DETAINER, RELEASED IN ERROR, DECEASED, OR TRANSFERRED TO ANOTHER JURISDICTION ARE NOT INCLUDED. AN OFFENDER MAY BE RELEASED MULTIPLE TIMES BUT IS ONLY COUNTED ONCE PER RELEASE YEAR.

**OFFENDERS ARE TRACKED FOR A PERIOD OF TIME FROM DATE OF RELEASE BASED ON THE YEAR OF RETURN :**

**1st Year Returns:** 12 months  
**2nd Year Returns:** 24 months  
**3rd Year Returns:** 36 months  
**4th Year Returns:** 48 months  
**5th Year Returns:** 60 months

	Total Releases	1st Year Returns	%	2nd Year Returns	%	3rd Year Returns	%	4th Year Returns	%	5th Year Returns	%
<b>2004</b>	13,691	2,736	<b>20.0%</b>	4,374	<b>31.9%</b>	5,295	<b>38.7%</b>	5,892	<b>43.0%</b>	6,328	<b>46.2%</b>
<b>2005</b>	13,550	2,485	<b>18.3%</b>	4,188	<b>30.9%</b>	5,124	<b>37.8%</b>	5,762	<b>42.5%</b>	6,234	<b>46.0%</b>
<b>2006</b>	13,032	2,301	<b>17.7%</b>	3,827	<b>29.4%</b>	4,736	<b>36.3%</b>	5,376	<b>41.3%</b>	5,875	<b>45.1%</b>
<b>2007</b>	12,650	2,235	<b>17.7%</b>	3,732	<b>29.5%</b>	4,646	<b>36.7%</b>	5,265	<b>41.6%</b>	5,731	<b>45.3%</b>
<b>2008</b>	12,833	2,141	<b>16.7%</b>	3,676	<b>28.6%</b>	4,643	<b>36.2%</b>	5,277	<b>41.1%</b>	5,727	<b>44.6%</b>
<b>2009</b>	12,933	2,026	<b>15.7%</b>	3,579	<b>27.7%</b>	4,543	<b>35.1%</b>	5,103	<b>39.5%</b>	5,519	<b>42.7%</b>
<b>2010</b>	14,744	2,195	<b>14.9%</b>	4,055	<b>27.5%</b>	5,135	<b>34.8%</b>	5,777	<b>39.2%</b>	6,225	<b>42.2%</b>
<b>2011</b>	14,179	2,165	<b>15.3%</b>	4,005	<b>28.2%</b>	5,065	<b>35.7%</b>	5,713	<b>40.3%</b>		
<b>2012</b>	14,434	2,256	<b>15.6%</b>	4,061	<b>28.1%</b>	5,130	<b>35.5%</b>				
<b>2013</b>	15,209	2,349	<b>15.4%</b>	4,184	<b>27.5%</b>						
<b>2014</b>	14,988	2,272	<b>15.2%</b>								

STATE OFFENDERS RELEASED FROM ADULT FACILITIES, LOCAL JAIL FACILITIES, AND TRANSITIONAL WORK PROGRAMS.

# DEPARTMENT OF PUBLIC SAFETY AND CORRECTIONS

## RECIDIVISM IN ADULT CORRECTIONS (STATE FACILITIES)

March 18, 2016

**RECIDIVISM:** RETURN TO CUSTODY FOLLOWING CONVICTION FOR A NEW FELONY OR TECHNICAL REVOCATION OF SUPERVISION AFTER HAVING BEEN RELEASED FROM INCARCERATION THROUGH COMPLETED SENTENCE, RELEASED ON PAROLE, CONDITIONAL RELEASE, OR SPLIT PROBATION SENTENCE. OFFENDERS RELEASED TO A DETAINER, RELEASED IN ERROR, DECEASED, OR TRANSFERRED TO ANOTHER JURISDICTION ARE NOT INCLUDED. AN OFFENDER MAY BE RELEASED MULTIPLE TIMES BUT IS ONLY COUNTED ONCE PER RELEASE YEAR.

**OFFENDERS ARE TRACKED FOR A PERIOD OF TIME FROM DATE OF RELEASE BASED ON THE YEAR OF RETURN :**

- 1st Year Returns:** 12 months
- 2nd Year Returns:** 24 months
- 3rd Year Returns:** 36 months
- 4th Year Returns:** 48 months
- 5th Year Returns:** 60 months

	<b>Total Releases</b>	<b>1st Year Returns</b>	<b>%</b>	<b>2nd Year Returns</b>	<b>%</b>	<b>3rd Year Returns</b>	<b>%</b>	<b>4th Year Returns</b>	<b>%</b>	<b>5th Year Returns</b>	<b>%</b>
<b>2004</b>	2,992	531	<b>17.7%</b>	911	<b>30.4%</b>	1,107	<b>37.0%</b>	1,246	<b>41.6%</b>	1,341	<b>44.8%</b>
<b>2005</b>	3,010	507	<b>16.8%</b>	924	<b>30.7%</b>	1,138	<b>37.8%</b>	1,287	<b>42.8%</b>	1,373	<b>45.6%</b>
<b>2006</b>	3,487	574	<b>16.5%</b>	969	<b>27.8%</b>	1,230	<b>35.3%</b>	1,413	<b>40.5%</b>	1,548	<b>44.4%</b>
<b>2007</b>	3,294	519	<b>15.8%</b>	950	<b>28.8%</b>	1,200	<b>36.4%</b>	1,357	<b>41.2%</b>	1,471	<b>44.7%</b>
<b>2008</b>	3,161	543	<b>17.2%</b>	924	<b>29.2%</b>	1,201	<b>38.0%</b>	1,360	<b>43.0%</b>	1,458	<b>46.1%</b>
<b>2009</b>	3,141	487	<b>15.5%</b>	871	<b>27.7%</b>	1,082	<b>34.4%</b>	1,188	<b>37.8%</b>	1,297	<b>41.3%</b>
<b>2010</b>	3,613	532	<b>14.7%</b>	1,009	<b>27.9%</b>	1,313	<b>36.3%</b>	1,458	<b>40.4%</b>	1,576	<b>43.6%</b>
<b>2011</b>	3,279	460	<b>14.0%</b>	923	<b>28.1%</b>	1,168	<b>35.6%</b>	1,328	<b>40.5%</b>		
<b>2012</b>	3,070	434	<b>14.1%</b>	859	<b>28.0%</b>	1,087	<b>35.4%</b>				
<b>2013</b>	3,268	434	<b>13.3%</b>	829	<b>25.4%</b>						
<b>2014</b>	3,089	401	<b>13.0%</b>								

STATE OFFENDERS RELEASED FROM ADULT INSTITUTIONS.

## DEPARTMENT OF PUBLIC SAFETY AND CORRECTIONS

### RECIDIVISM IN ADULT CORRECTIONS (LOCAL FACILITIES)

March 18, 2016

**RECIDIVISM:** RETURN TO CUSTODY FOLLOWING CONVICTION FOR A NEW FELONY OR TECHNICAL REVOCATION OF SUPERVISION AFTER HAVING BEEN RELEASED FROM INCARCERATION THROUGH COMPLETED SENTENCE, RELEASED ON PAROLE, CONDITIONAL RELEASE, OR SPLIT PROBATION SENTENCE. OFFENDERS RELEASED TO A DETAINER, RELEASED IN ERROR, DECEASED, OR TRANSFERRED TO ANOTHER JURISDICTION ARE NOT INCLUDED. AN OFFENDER MAY BE RELEASED MULTIPLE TIMES BUT IS ONLY COUNTED ONCE PER RELEASE YEAR.

**OFFENDERS ARE TRACKED FOR A PERIOD OF TIME FROM DATE OF RELEASE BASED ON THE YEAR OF RETURN :**

**1st Year Returns:** 12 months  
**2nd Year Returns:** 24 months  
**3rd Year Returns:** 36 months  
**4th Year Returns:** 48 months  
**5th Year Returns:** 60 months

	<b>Total Releases</b>	<b>1st Year Returns</b>	<b>%</b>	<b>2nd Year Returns</b>	<b>%</b>	<b>3rd Year Returns</b>	<b>%</b>	<b>4th Year Returns</b>	<b>%</b>	<b>5th Year Returns</b>	<b>%</b>
<b>2004</b>	7,536	1,771	<b>23.5%</b>	2,646	<b>35.1%</b>	3,121	<b>41.4%</b>	3,434	<b>45.6%</b>	3,674	<b>48.8%</b>
<b>2005</b>	7,114	1,472	<b>20.7%</b>	2,313	<b>32.5%</b>	2,783	<b>39.1%</b>	3,121	<b>43.9%</b>	3,374	<b>47.4%</b>
<b>2006</b>	5,941	1,257	<b>21.2%</b>	1,943	<b>32.7%</b>	2,357	<b>39.7%</b>	2,647	<b>44.6%</b>	2,868	<b>48.3%</b>
<b>2007</b>	5,776	1,246	<b>21.6%</b>	1,915	<b>33.2%</b>	2,309	<b>40.0%</b>	2,613	<b>45.2%</b>	2,828	<b>49.0%</b>
<b>2008</b>	6,184	1,163	<b>18.8%</b>	1,906	<b>30.8%</b>	2,351	<b>38.0%</b>	2,645	<b>42.8%</b>	2,873	<b>46.5%</b>
<b>2009</b>	6,670	1,174	<b>17.6%</b>	1,980	<b>29.7%</b>	2,477	<b>37.1%</b>	2,796	<b>41.9%</b>	2,996	<b>44.9%</b>
<b>2010</b>	7,750	1,329	<b>17.1%</b>	2,307	<b>29.8%</b>	2,842	<b>36.7%</b>	3,196	<b>41.2%</b>	3,432	<b>44.3%</b>
<b>2011</b>	7,801	1,382	<b>17.7%</b>	2,360	<b>30.3%</b>	2,923	<b>37.5%</b>	3,280	<b>42.0%</b>		
<b>2012</b>	8,401	1,514	<b>18.0%</b>	2,551	<b>30.4%</b>	3,154	<b>37.5%</b>				
<b>2013</b>	9,019	1,607	<b>17.8%</b>	2,731	<b>30.3%</b>						
<b>2014</b>	9,153	1,572	<b>17.2%</b>								

STATE OFFENDERS RELEASED FROM LOCAL FACILITIES .

## DEPARTMENT OF PUBLIC SAFETY AND CORRECTIONS

### RECIDIVISM IN ADULT CORRECTIONS (TRANSITIONAL WORK PROGRAMS)

March 18, 2016

**RECIDIVISM:** RETURN TO CUSTODY FOLLOWING CONVICTION FOR A NEW FELONY OR TECHNICAL REVOCATION OF SUPERVISION AFTER HAVING BEEN RELEASED FROM INCARCERATION THROUGH COMPLETED SENTENCE, RELEASED ON PAROLE, CONDITIONAL RELEASE, OR SPLIT PROBATION SENTENCE. OFFENDERS RELEASED TO A DETAINER, RELEASED IN ERROR, DECEASED, OR TRANSFERRED TO ANOTHER JURISDICTION ARE NOT INCLUDED. AN OFFENDER MAY BE RELEASED MULTIPLE TIMES BUT IS ONLY COUNTED ONCE PER RELEASE YEAR.

**OFFENDERS ARE TRACKED FOR A PERIOD OF TIME FROM DATE OF RELEASE BASED ON THE YEAR OF RETURN :**

**1st Year Returns:** 12 months  
**2nd Year Returns:** 24 months  
**3rd Year Returns:** 36 months  
**4th Year Returns:** 48 months  
**5th Year Returns:** 60 months

	<b>Total Releases</b>	<b>1st Year Returns</b>	<b>%</b>	<b>2nd Year Returns</b>	<b>%</b>	<b>3rd Year Returns</b>	<b>%</b>	<b>4th Year Returns</b>	<b>%</b>	<b>5th Year Returns</b>	<b>%</b>
<b>2004</b>	2,440	358	<b>14.7%</b>	659	<b>27.0%</b>	845	<b>34.6%</b>	962	<b>39.4%</b>	1,040	<b>42.6%</b>
<b>2005</b>	2,732	432	<b>15.8%</b>	800	<b>29.3%</b>	1,009	<b>36.9%</b>	1,138	<b>41.7%</b>	1,247	<b>45.6%</b>
<b>2006</b>	3,024	406	<b>13.4%</b>	795	<b>26.3%</b>	997	<b>33.0%</b>	1,138	<b>37.6%</b>	1,266	<b>41.9%</b>
<b>2007</b>	3,193	415	<b>13.0%</b>	760	<b>23.8%</b>	995	<b>31.2%</b>	1,128	<b>35.3%</b>	1,320	<b>41.3%</b>
<b>2008</b>	3,036	399	<b>13.1%</b>	764	<b>25.2%</b>	974	<b>32.1%</b>	1,147	<b>37.8%</b>	1,253	<b>41.3%</b>
<b>2009</b>	2,736	328	<b>12.0%</b>	662	<b>24.2%</b>	877	<b>32.1%</b>	990	<b>36.2%</b>	1,084	<b>39.6%</b>
<b>2010</b>	2,957	313	<b>10.6%</b>	674	<b>22.8%</b>	876	<b>29.6%</b>	1,008	<b>34.1%</b>	1,098	<b>37.1%</b>
<b>2011</b>	2,802	301	<b>10.7%</b>	678	<b>24.2%</b>	915	<b>32.7%</b>	1,037	<b>37.0%</b>		
<b>2012</b>	2,738	302	<b>11.0%</b>	628	<b>22.9%</b>	853	<b>31.2%</b>				
<b>2013</b>	2,860	322	<b>11.3%</b>	635	<b>22.2%</b>						
<b>2014</b>	2,846	326	<b>11.5%</b>								

STATE OFFENDERS RELEASED FROM TRANSITIONAL WORK PROGRAMS.

## DEPARTMENT OF PUBLIC SAFETY AND CORRECTIONS

### RECIDIVISM IN ADULT CORRECTIONS (IMPACT GRADUATES)

March 18, 2016

**RECIDIVISM:** RETURN TO CUSTODY FOLLOWING CONVICTION FOR A NEW FELONY OR TECHNICAL REVOCATION OF SUPERVISION AFTER HAVING BEEN RELEASED FROM INCARCERATION THROUGH COMPLETED SENTENCE, RELEASED ON PAROLE, CONDITIONAL RELEASE, OR SPLIT PROBATION SENTENCE. OFFENDERS RELEASED TO A DETAINER, RELEASED IN ERROR, DECEASED, OR TRANSFERRED TO ANOTHER JURISDICTION ARE NOT INCLUDED. AN OFFENDER MAY BE RELEASED MULTIPLE TIMES BUT IS ONLY COUNTED ONCE PER RELEASE YEAR.

**OFFENDERS ARE TRACKED FOR A PERIOD OF TIME FROM DATE OF RELEASE BASED ON THE YEAR OF RETURN :**

**1st Year Returns:** 12 months  
**2nd Year Returns:** 24 months  
**3rd Year Returns:** 36 months  
**4th Year Returns:** 48 months  
**5th Year Returns:** 60 months

	Total Releases	1st Year Returns	%	2nd Year Returns	%	3rd Year Returns	%	4th Year Returns	%	5th Year Returns	%
<b>2004</b>	256	24	<b>9.4%</b>	65	<b>25.4%</b>	98	<b>38.3%</b>	121	<b>47.3%</b>	135	<b>52.7%</b>
<b>2005</b>	225	19	<b>8.4%</b>	55	<b>24.4%</b>	77	<b>34.2%</b>	89	<b>39.6%</b>	100	<b>44.4%</b>
<b>2006</b>	175	16	<b>9.1%</b>	44	<b>25.1%</b>	60	<b>34.3%</b>	72	<b>41.1%</b>	82	<b>46.9%</b>
<b>2007</b>	181	23	<b>12.7%</b>	46	<b>25.4%</b>	59	<b>32.6%</b>	73	<b>40.3%</b>	80	<b>44.2%</b>
<b>2008</b>	236	13	<b>5.5%</b>	46	<b>19.5%</b>	72	<b>30.5%</b>	89	<b>37.7%</b>	103	<b>43.6%</b>
<b>2009</b>	245	33	<b>13.5%</b>	66	<b>26.9%</b>	97	<b>39.6%</b>	116	<b>47.3%</b>	124	<b>50.6%</b>
<b>2010</b>	253	19	<b>7.5%</b>	54	<b>21.3%</b>	84	<b>33.2%</b>	101	<b>39.9%</b>	109	<b>43.1%</b>
<b>2011</b>	192	16	<b>8.3%</b>	49	<b>25.5%</b>	70	<b>36.5%</b>	80	<b>41.7%</b>		
<b>2012</b>	149	19	<b>12.8%</b>	40	<b>26.8%</b>	58	<b>38.9%</b>				

NUMBERS INCLUDE STATE OFFENDERS RELEASED THAT COMPLETED THE IMPACT PROGRAM AT EHCC, FWAVE, AND LCIW. IMPACT PROGRAM ENDED MAY 2013.

## DEPARTMENT OF PUBLIC SAFETY AND CORRECTIONS

### RECIDIVISM IN ADULT CORRECTIONS (BLUE WALTERS)

March 18, 2016

**RECIDIVISM:** RETURN TO CUSTODY FOLLOWING CONVICTION FOR A NEW FELONY OR TECHNICAL REVOCATION OF SUPERVISION AFTER HAVING BEEN RELEASED FROM INCARCERATION THROUGH COMPLETED SENTENCE, RELEASED ON PAROLE, CONDITIONAL RELEASE, OR SPLIT PROBATION SENTENCE. OFFENDERS RELEASED TO A DETAINER, RELEASED IN ERROR, DECEASED, OR TRANSFERRED TO ANOTHER JURISDICTION ARE NOT INCLUDED. AN OFFENDER MAY BE RELEASED MULTIPLE TIMES BUT IS ONLY COUNTED ONCE PER RELEASE YEAR.

**OFFENDERS ARE TRACKED FOR A PERIOD OF TIME FROM DATE OF RELEASE BASED ON THE YEAR OF RETURN :**

**1st Year Returns:** 12 months  
**2nd Year Returns:** 24 months  
**3rd Year Returns:** 36 months  
**4th Year Returns:** 48 months  
**5th Year Returns:** 60 months

	Total Releases	1st Year Returns	%	2nd Year Returns	%	3rd Year Returns	%	4th Year Returns	%	5th Year Returns	%
<b>2004</b>	244	52	<b>21.3%</b>	93	<b>38.1%</b>	124	<b>50.8%</b>	130	<b>53.3%</b>	139	<b>57.0%</b>
<b>2005</b>	267	56	<b>21.0%</b>	101	<b>37.8%</b>	124	<b>46.4%</b>	139	<b>52.1%</b>	154	<b>57.7%</b>
<b>2006</b>	241	51	<b>21.2%</b>	83	<b>34.4%</b>	101	<b>41.9%</b>	115	<b>47.7%</b>	122	<b>50.6%</b>
<b>2007</b>	172	31	<b>18.0%</b>	60	<b>34.9%</b>	79	<b>45.9%</b>	88	<b>51.2%</b>	100	<b>58.1%</b>
<b>2008</b>	105	18	<b>17.1%</b>	34	<b>32.4%</b>	41	<b>39.0%</b>	52	<b>49.5%</b>	55	<b>52.4%</b>
<b>2009</b>	106	13	<b>12.3%</b>	29	<b>27.4%</b>	48	<b>45.3%</b>	49	<b>46.2%</b>	57	<b>53.8%</b>
<b>2010</b>	322	43	<b>13.4%</b>	88	<b>27.3%</b>	117	<b>36.3%</b>	128	<b>39.8%</b>	138	<b>42.9%</b>
<b>2011</b>	359	55	<b>15.3%</b>	108	<b>30.1%</b>	143	<b>39.8%</b>	160	<b>44.6%</b>		
<b>2012</b>	428	62	<b>14.5%</b>	120	<b>28.0%</b>	165	<b>38.6%</b>				
<b>2013</b>	550	87	<b>15.8%</b>	172	<b>31.3%</b>						
<b>2014</b>	445	66	<b>14.8%</b>								

INCLUDES OFFENDERS THAT PARTICIPATED IN BLUE WALTERS PRIOR TO RELEASE.

\*BLUE WALTERS IS A SUBSTANCE ABUSE TREATMENT CENTER

\*\*AUGUST 2005 ORLEANS/BLUE WALTERS PROGRAM IN NEW ORLEANS CLOSED

\*\*\*TENSAS/BLUE WALTERS PROGRAM OPEN MAY 2004 TO JULY 2006.

\*\*\*\*JULY 2006-JULY 2007 BLUE WALTERS PROGRAM TRANSFERRED TO SOUTH LOUISIANA CORRECTIONAL CENTER

\*\*\*\*\*JULY 2007 SOUTH LOUISIANA CORRECTIONAL CENTER RENAMED RICHWOOD

## DEPARTMENT OF PUBLIC SAFETY AND CORRECTIONS

### RECIDIVISM IN ADULT CORRECTIONS (PAROLE BOARD RELEASES)

March 18, 2016

**RECIDIVISM:** RETURN TO CUSTODY FOLLOWING CONVICTION FOR A NEW FELONY OR TECHNICAL REVOCATION OF SUPERVISION AFTER HAVING BEEN RELEASED FROM INCARCERATION THROUGH COMPLETED SENTENCE, RELEASED ON PAROLE, CONDITIONAL RELEASE, OR SPLIT PROBATION SENTENCE. OFFENDERS RELEASED TO A DETAINER, RELEASED IN ERROR, DECEASED, OR TRANSFERRED TO ANOTHER JURISDICTION ARE NOT INCLUDED. AN OFFENDER MAY BE RELEASED MULTIPLE TIMES BUT IS ONLY COUNTED ONCE PER RELEASE YEAR.

**OFFENDERS ARE TRACKED FOR A PERIOD OF TIME FROM DATE OF RELEASE BASED ON THE YEAR OF RETURN :**

**1st Year Returns:** 12 months  
**2nd Year Returns:** 24 months  
**3rd Year Returns:** 36 months  
**4th Year Returns:** 48 months  
**5th Year Returns:** 60 months

	Total Releases	1st Year Returns	%	2nd Year Returns	%	3rd Year Returns	%	4th Year Returns	%	5th Year Returns	%
<b>2004</b>	1,048	158	<b>15.1%</b>	302	<b>28.8%</b>	383	<b>36.5%</b>	424	<b>40.5%</b>	454	<b>43.3%</b>
<b>2005</b>	1,004	152	<b>15.1%</b>	305	<b>30.4%</b>	382	<b>38.0%</b>	427	<b>42.5%</b>	454	<b>45.2%</b>
<b>2006</b>	1,015	113	<b>11.1%</b>	243	<b>23.9%</b>	309	<b>30.4%</b>	363	<b>35.8%</b>	398	<b>39.2%</b>
<b>2007</b>	1,119	137	<b>12.2%</b>	272	<b>24.3%</b>	364	<b>32.5%</b>	415	<b>37.1%</b>	453	<b>40.5%</b>
<b>2008</b>	620	52	<b>8.4%</b>	147	<b>23.7%</b>	188	<b>30.3%</b>	216	<b>34.8%</b>	237	<b>38.2%</b>
<b>2009</b>	378	34	<b>9.0%</b>	76	<b>20.1%</b>	101	<b>26.7%</b>	118	<b>31.2%</b>	130	<b>34.4%</b>
<b>2010</b>	371	22	<b>5.9%</b>	67	<b>18.1%</b>	94	<b>25.3%</b>	103	<b>27.8%</b>	112	<b>30.2%</b>
<b>2011</b>	391	29	<b>7.4%</b>	75	<b>19.2%</b>	104	<b>26.6%</b>	114	<b>29.2%</b>		
<b>2012</b>	696	59	<b>8.5%</b>	143	<b>20.5%</b>	211	<b>30.3%</b>				
<b>2013</b>	601	49	<b>8.2%</b>	113	<b>18.8%</b>						
<b>2014</b>	513	43	<b>8.4%</b>								

EXCLUDES: IMPACT GRADUATES



# DEPARTMENT OF PUBLIC SAFETY AND CORRECTIONS

## RECIDIVISM IN ADULT CORRECTIONS (SEX OFFENDERS)

March 18, 2016

**RECIDIVISM:** RETURN TO CUSTODY FOLLOWING CONVICTION FOR A NEW FELONY OR TECHNICAL REVOCATION OF SUPERVISION AFTER HAVING BEEN RELEASED FROM INCARCERATION THROUGH COMPLETED SENTENCE, RELEASED ON PAROLE, CONDITIONAL RELEASE, OR SPLIT PROBATION SENTENCE. OFFENDERS RELEASED TO A DETAINER, RELEASED IN ERROR, DECEASED, OR TRANSFERRED TO ANOTHER JURISDICTION ARE NOT INCLUDED. AN OFFENDER MAY BE RELEASED MULTIPLE TIMES BUT IS ONLY COUNTED ONCE PER RELEASE YEAR.

**OFFENDERS ARE TRACKED FOR A PERIOD OF TIME FROM DATE OF RELEASE BASED ON THE YEAR OF RETURN :**

- 1st Year Returns:** 12 months
- 2nd Year Returns:** 24 months
- 3rd Year Returns:** 36 months
- 4th Year Returns:** 48 months
- 5th Year Returns:** 60 months

	<b>Total Releases</b>	<b>1st Year Returns</b>	<b>%</b>	<b>2nd Year Returns</b>	<b>%</b>	<b>3rd Year Returns</b>	<b>%</b>	<b>4th Year Returns</b>	<b>%</b>	<b>5th Year Returns</b>	<b>%</b>
<b>2004</b>	811	196	<b>24.2%</b>	293	<b>36.1%</b>	348	<b>42.9%</b>	387	<b>47.7%</b>	415	<b>51.2%</b>
<b>2005</b>	769	173	<b>22.5%</b>	252	<b>32.8%</b>	290	<b>37.7%</b>	326	<b>42.4%</b>	349	<b>45.4%</b>
<b>2006</b>	675	133	<b>19.7%</b>	202	<b>29.9%</b>	309	<b>45.8%</b>	363	<b>53.8%</b>	307	<b>45.5%</b>
<b>2007</b>	580	101	<b>17.4%</b>	159	<b>27.4%</b>	194	<b>33.4%</b>	229	<b>39.5%</b>	257	<b>44.3%</b>
<b>2008</b>	620	96	<b>15.5%</b>	150	<b>24.2%</b>	187	<b>30.2%</b>	219	<b>35.3%</b>	246	<b>39.7%</b>
<b>2009</b>	610	86	<b>14.1%</b>	139	<b>22.8%</b>	172	<b>28.2%</b>	188	<b>30.8%</b>	213	<b>34.9%</b>
<b>2010</b>	605	92	<b>15.2%</b>	155	<b>25.6%</b>	203	<b>33.6%</b>	229	<b>37.9%</b>	243	<b>40.2%</b>
<b>2011</b>	615	53	<b>8.6%</b>	120	<b>19.5%</b>	164	<b>26.7%</b>	198	<b>32.2%</b>		
<b>2012</b>	574	52	<b>9.1%</b>	112	<b>19.5%</b>	152	<b>26.5%</b>				
<b>2013</b>	664	72	<b>10.8%</b>	133	<b>20.0%</b>						
<b>2014</b>	602	56	<b>9.3%</b>								

STATE OFFENDERS RELEASED FROM ADULT INSTITUTIONS, LOCAL FACILITIES, AND TRANSITIONAL WORK PROGRAMS.

SEX OFFENSES A VIOLATION OF ANY PROVISION OF SUBPART C OF PART II, SUBPART B OF PART IV, OR SUBPART A(1) OR A(4) OF SUBPART V OF CHAPTER 1 OF TITLE 14 OF THE LOUISIANA REVISED STATUTES OF 1950.

## DEPARTMENT OF PUBLIC SAFETY AND CORRECTIONS

### RECIDIVISM IN ADULT CORRECTIONS (EDUCATION)

March 18, 2016

**RECIDIVISM:** RETURN TO CUSTODY FOLLOWING CONVICTION FOR A NEW FELONY OR TECHNICAL REVOCATION OF SUPERVISION AFTER HAVING BEEN RELEASED FROM INCARCERATION THROUGH COMPLETED SENTENCE, RELEASED ON PAROLE, CONDITIONAL RELEASE, OR SPLIT PROBATION SENTENCE. OFFENDERS RELEASED TO A DETAINER, RELEASED IN ERROR, DECEASED, OR TRANSFERRED TO ANOTHER JURISDICTION ARE NOT INCLUDED. AN OFFENDER MAY BE RELEASED MULTIPLE TIMES BUT IS ONLY COUNTED ONCE PER RELEASE YEAR.

**OFFENDERS ARE TRACKED FOR A PERIOD OF TIME FROM DATE OF RELEASE BASED ON THE YEAR OF RETURN :**

**1st Year Returns:** 12 months  
**2nd Year Returns:** 24 months  
**3rd Year Returns:** 36 months  
**4th Year Returns:** 48 months  
**5th Year Returns:** 60 months

	Total Releases	1st Year Returns	%	2nd Year Returns	%	3rd Year Returns	%	4th Year Returns	%	5th Year Returns	%
<b>2004</b>	1,042	105	<b>10.1%</b>	252	<b>24.2%</b>	347	<b>33.3%</b>	416	<b>39.9%</b>	455	<b>43.7%</b>
<b>2005</b>	1,151	117	<b>10.2%</b>	264	<b>22.9%</b>	366	<b>31.8%</b>	430	<b>37.4%</b>	470	<b>40.8%</b>
<b>2006</b>	1,231	103	<b>8.4%</b>	243	<b>19.7%</b>	330	<b>26.8%</b>	396	<b>32.2%</b>	444	<b>36.1%</b>
<b>2007</b>	1,242	128	<b>10.3%</b>	261	<b>21.0%</b>	368	<b>29.6%</b>	434	<b>34.9%</b>	486	<b>39.1%</b>
<b>2008</b>	1,450	159	<b>11.0%</b>	333	<b>23.0%</b>	454	<b>31.3%</b>	540	<b>37.2%</b>	593	<b>40.9%</b>
<b>2009</b>	1,477	177	<b>12.0%</b>	351	<b>23.8%</b>	483	<b>32.7%</b>	544	<b>36.8%</b>	598	<b>40.5%</b>
<b>2010</b>	1,798	170	<b>9.5%</b>	383	<b>21.3%</b>	548	<b>30.5%</b>	634	<b>35.3%</b>	705	<b>39.2%</b>
<b>2011</b>	1,573	138	<b>8.8%</b>	366	<b>23.3%</b>	490	<b>31.2%</b>	570	<b>36.2%</b>		
<b>2012</b>	1,466	159	<b>10.8%</b>	340	<b>23.2%</b>	483	<b>32.9%</b>				
<b>2013</b>	1,444	107	<b>7.4%</b>	254	<b>17.6%</b>						
<b>2014</b>	1,268	109	<b>8.6%</b>								

STATE OFFENDERS RELEASED FROM ADULT INSTITUTIONS, LOCAL FACILITIES, AND TRANSITIONAL WORK PROGRAMS THAT HAVE COMPLETED AN EDUCATION CLASS WHILE INCARCERATED IN A STATE FACILITY.

## DEPARTMENT OF PUBLIC SAFETY AND CORRECTIONS

### RECIDIVISM IN ADULT CORRECTIONS (FEMALE RECIDIVISM)

March 18, 2016

**RECIDIVISM:** RETURN TO CUSTODY FOLLOWING CONVICTION FOR A NEW FELONY OR TECHNICAL REVOCATION OF SUPERVISION AFTER HAVING BEEN RELEASED FROM INCARCERATION THROUGH COMPLETED SENTENCE, RELEASED ON PAROLE, CONDITIONAL RELEASE, OR SPLIT PROBATION SENTENCE. OFFENDERS RELEASED TO A DETAINER, RELEASED IN ERROR, DECEASED, OR TRANSFERRED TO ANOTHER JURISDICTION ARE NOT INCLUDED. AN OFFENDER MAY BE RELEASED MULTIPLE TIMES BUT IS ONLY COUNTED ONCE PER RELEASE YEAR.

**OFFENDERS ARE TRACKED FOR A PERIOD OF TIME FROM DATE OF RELEASE BASED ON THE YEAR OF RETURN :**

**1st Year Returns:** 12 months  
**2nd Year Returns:** 24 months  
**3rd Year Returns:** 36 months  
**4th Year Returns:** 48 months  
**5th Year Returns:** 60 months

	<b>Total Releases</b>	<b>1st Year Returns</b>	<b>%</b>	<b>2nd Year Returns</b>	<b>%</b>	<b>3rd Year Returns</b>	<b>%</b>	<b>4th Year Returns</b>	<b>%</b>	<b>5th Year Returns</b>	<b>%</b>
<b>2004</b>	1,562	234	<b>15.0%</b>	354	<b>22.7%</b>	437	<b>28.0%</b>	488	<b>31.2%</b>	528	<b>33.8%</b>
<b>2005</b>	1,493	205	<b>13.7%</b>	337	<b>22.6%</b>	410	<b>27.5%</b>	468	<b>31.3%</b>	507	<b>34.0%</b>
<b>2006</b>	1,445	173	<b>12.0%</b>	298	<b>20.6%</b>	360	<b>24.9%</b>	400	<b>27.7%</b>	434	<b>30.0%</b>
<b>2007</b>	1,423	168	<b>11.8%</b>	281	<b>19.7%</b>	345	<b>24.2%</b>	390	<b>27.4%</b>	440	<b>30.9%</b>
<b>2008</b>	1,434	159	<b>11.1%</b>	271	<b>18.9%</b>	354	<b>24.7%</b>	404	<b>28.2%</b>	446	<b>31.1%</b>
<b>2009</b>	1,435	133	<b>9.3%</b>	242	<b>16.9%</b>	310	<b>21.6%</b>	355	<b>24.7%</b>	391	<b>27.2%</b>
<b>2010</b>	1,739	163	<b>9.4%</b>	310	<b>17.8%</b>	388	<b>22.3%</b>	445	<b>25.6%</b>	488	<b>28.1%</b>
<b>2011</b>	1,625	167	<b>10.3%</b>	295	<b>18.2%</b>	368	<b>22.6%</b>	420	<b>25.8%</b>		
<b>2012</b>	1,547	178	<b>11.5%</b>	303	<b>19.6%</b>	382	<b>24.7%</b>				
<b>2013</b>	1,662	171	<b>10.3%</b>	295	<b>17.7%</b>						
<b>2014</b>	1,663	156	<b>9.4%</b>								

FEMALE STATE OFFENDERS RELEASED FROM ADULT INSTITUTIONS, LOCAL FACILITIES, AND TRANSITIONAL WORK PROGRAMS.

## DEPARTMENT OF PUBLIC SAFETY AND CORRECTIONS

### RECIDIVISM IN ADULT CORRECTIONS (ALL PNP COMPLETIONS)

May 10, 2016

**RECIDIVISM:** RETURN TO CUSTODY FOLLOWING CONVICTION FOR A NEW FELONY OR TECHNICAL REVOCATION OF SUPERVISION AFTER HAVING BEEN RELEASED FROM INCARCERATION THROUGH COMPLETED SENTENCE, RELEASED ON PAROLE, CONDITIONAL RELEASE, OR SPLIT PROBATION SENTENCE. OFFENDERS RELEASED TO A DETAINER, RELEASED IN ERROR, DECEASED, OR TRANSFERRED TO ANOTHER JURISDICTION ARE NOT INCLUDED. AN OFFENDER MAY BE RELEASED MULTIPLE TIMES BUT IS ONLY COUNTED ONCE PER RELEASE YEAR.

**OFFENDERS ARE TRACKED FOR A PERIOD OF TIME FROM DATE OF RELEASE BASED ON THE YEAR OF RETURN :**

**1st Year Returns:** 12 months  
**2nd Year Returns:** 24 months  
**3rd Year Returns:** 36 months  
**4th Year Returns:** 48 months  
**5th Year Returns:** 60 months

	Total Releases	1st Year Returns	%	2nd Year Returns	%	3rd Year Returns	%	4th Year Returns	%	5th Year Returns	%
<b>2004</b>	16,717	716	<b>4.3%</b>	1,461	<b>8.7%</b>	2,120	<b>12.7%</b>	2,718	<b>16.3%</b>	3,288	<b>19.7%</b>
<b>2005</b>	17,543	631	<b>3.6%</b>	1,467	<b>8.4%</b>	2,209	<b>12.6%</b>	2,921	<b>16.7%</b>	3,535	<b>20.2%</b>
<b>2006</b>	18,557	679	<b>3.7%</b>	1,667	<b>9.0%</b>	2,540	<b>13.7%</b>	3,295	<b>17.8%</b>	3,890	<b>21.0%</b>
<b>2007</b>	17,185	743	<b>4.3%</b>	1,691	<b>9.8%</b>	2,545	<b>14.8%</b>	3,175	<b>18.5%</b>	3,691	<b>21.5%</b>
<b>2008</b>	17,299	723	<b>4.2%</b>	1,700	<b>9.8%</b>	2,495	<b>14.4%</b>	3,162	<b>18.3%</b>	3,721	<b>21.5%</b>
<b>2009</b>	18,266	783	<b>4.3%</b>	1,752	<b>9.6%</b>	2,652	<b>14.5%</b>	3,347	<b>18.3%</b>	3,841	<b>21.0%</b>
<b>2010</b>	18,757	753	<b>4.0%</b>	1,759	<b>9.4%</b>	2,673	<b>14.3%</b>	3,364	<b>17.9%</b>	3,917	<b>20.9%</b>
<b>2011</b>	19,264	873	<b>4.5%</b>	1,924	<b>10.0%</b>	2,795	<b>14.5%</b>	3,466	<b>18.0%</b>		
<b>2012</b>	19,004	866	<b>4.6%</b>	1,881	<b>9.9%</b>	2,690	<b>14.2%</b>				
<b>2013</b>	19,527	858	<b>4.4%</b>	1,834	<b>9.4%</b>						
<b>2014</b>	18,299	894	<b>4.9%</b>								

## DEPARTMENT OF PUBLIC SAFETY AND CORRECTIONS

### RECIDIVISM IN ADULT CORRECTIONS (TOTAL POPULATION - CRIME TYPE)

March 18, 2016

**RECIDIVISM:** RETURN TO CUSTODY FOLLOWING CONVICTION FOR A NEW FELONY OR TECHNICAL REVOCATION OF SUPERVISION AFTER HAVING BEEN RELEASED FROM INCARCERATION THROUGH COMPLETED SENTENCE, RELEASED ON PAROLE, CONDITIONAL RELEASE, OR SPLIT PROBATION SENTENCE. OFFENDERS RELEASED TO A DETAINER, RELEASED IN ERROR, DECEASED, OR TRANSFERRED TO ANOTHER JURISDICTION ARE NOT INCLUDED. AN OFFENDER MAY BE RELEASED MULTIPLE TIMES BUT IS ONLY COUNTED ONCE PER RELEASE YEAR.

**OFFENDERS ARE TRACKED FOR A PERIOD OF TIME FROM DATE OF RELEASE BASED ON THE YEAR OF RETURN :**

**1st Year Returns:** 12 months  
**2nd Year Returns:** 24 months  
**3rd Year Returns:** 36 months  
**4th Year Returns:** 48 months  
**5th Year Returns:** 60 months

	Total Releases	1st Year Returns	%	2nd Year Returns	%	3rd Year Returns	%	4th Year Returns	%	5th Year Returns	%
<b>2004</b>	13,691	2,736	<b>20.0%</b>	4,374	<b>31.9%</b>	5,295	<b>38.7%</b>	5,892	<b>43.0%</b>	6,328	<b>46.2%</b>
<b>2005</b>	13,550	2,485	<b>18.3%</b>	4,188	<b>30.9%</b>	5,124	<b>37.8%</b>	5,762	<b>42.5%</b>	6,234	<b>46.0%</b>
<b>2006</b>	13,032	2,301	<b>17.7%</b>	3,827	<b>29.4%</b>	4,736	<b>36.3%</b>	5,376	<b>41.3%</b>	5,875	<b>45.1%</b>
<b>2007</b>	12,650	2,235	<b>17.7%</b>	3,732	<b>29.5%</b>	4,646	<b>36.7%</b>	5,265	<b>41.6%</b>	5,730	<b>45.3%</b>
<b>2008</b>	12,833	2,141	<b>16.7%</b>	3,676	<b>28.6%</b>	4,643	<b>36.2%</b>	5,277	<b>41.1%</b>	5,727	<b>44.6%</b>
<b>2009</b>	12,933	2,026	<b>15.7%</b>	3,579	<b>27.7%</b>	4,543	<b>35.1%</b>	5,103	<b>39.5%</b>	5,519	<b>42.7%</b>
<b>2010</b>	14,744	2,195	<b>14.9%</b>	4,055	<b>27.5%</b>	5,135	<b>34.8%</b>	5,777	<b>39.2%</b>	6,225	<b>42.2%</b>
<b>2011</b>	14,179	2,165	<b>15.3%</b>	4,005	<b>28.2%</b>	5,065	<b>35.7%</b>	5,713	<b>40.3%</b>		
<b>2012</b>	14,434	2,256	<b>15.6%</b>	4,061	<b>28.1%</b>	5,130	<b>35.5%</b>				
<b>2013</b>	15,209	2,349	<b>15.4%</b>	4,184	<b>27.5%</b>						
<b>2014</b>	14,988	2,272	<b>15.2%</b>								

	1st Year (2014)	2nd Year (2013)	3rd Year (2012)	4th Year (2011)	5th Year (2010)
<b>PERCENT RETURNED WITHIN EACH RELEASE CRIME TYPE (Based on Last Full Year's Returns)</b>					
VIOLENT CRIMES:	1.5%	2.7%	3.6%	4.2%	4.0%
DRUG CRIMES:	5.0%	9.8%	13.0%	16.1%	16.7%
PROPERTY CRIMES:	6.2%	10.5%	13.2%	14.0%	14.8%
ALL OTHER CRIMES:	2.6%	4.5%	5.6%	6.0%	6.7%

62

STATE OFFENDERS RELEASED FROM ADULT INSTITUTIONS, LOCAL FACILITIES, AND WORK RELEASE CENTERS.  
 CRIME TYPE IS THE CRIME THE OFFENDER SERVED TIME FOR AND THEN WAS RELEASED FROM INCARCERATION.

## DEPARTMENT OF PUBLIC SAFETY AND CORRECTIONS

### RECIDIVISM IN ADULT CORRECTIONS (TOTAL POPULATION - OFFENDER CLASS)

March 18, 2016

**RECIDIVISM:** RETURN TO CUSTODY FOLLOWING CONVICTION FOR A NEW FELONY OR TECHNICAL REVOCATION OF SUPERVISION AFTER HAVING BEEN RELEASED FROM INCARCERATION THROUGH COMPLETED SENTENCE, RELEASED ON PAROLE, CONDITIONAL RELEASE, OR SPLIT PROBATION SENTENCE. OFFENDERS RELEASED TO A DETAINER, RELEASED IN ERROR, DECEASED, OR TRANSFERRED TO ANOTHER JURISDICTION ARE NOT INCLUDED. AN OFFENDER MAY BE RELEASED MULTIPLE TIMES BUT IS ONLY COUNTED ONCE PER RELEASE YEAR.

**OFFENDERS ARE TRACKED FOR A PERIOD OF TIME FROM DATE OF RELEASE BASED ON THE YEAR OF RETURN :**

1st Year Returns: 12 months  
 2nd Year Returns: 24 months  
 3rd Year Returns: 36 months  
 4th Year Returns: 48 months  
 5th Year Returns: 60 months

	Total Releases	1st Year Returns	%	2nd Year Returns	%	3rd Year Returns	%	4th Year Returns	%	5th Year Returns	%
2004	13,691	2,736	20.0%	4,374	31.9%	5,295	38.7%	5,892	43.0%	6,328	46.2%
2005	13,550	2,485	18.3%	4,188	30.9%	5,124	37.8%	5,762	42.5%	6,234	46.0%
2006	13,032	2,301	17.7%	3,827	29.4%	4,736	36.3%	5,376	41.3%	5,875	45.1%
2007	12,650	2,235	17.7%	3,732	29.5%	4,646	36.7%	5,265	41.6%	5,730	45.3%
2008	12,833	2,141	16.7%	3,676	28.6%	4,643	36.2%	5,277	41.1%	5,727	44.6%
2009	12,933	2,026	15.7%	3,579	27.7%	4,543	35.1%	5,103	39.5%	5,519	42.7%
2010	14,744	2,195	14.9%	4,055	27.5%	5,135	34.8%	5,777	39.2%	6,225	42.2%
2011	14,179	2,165	15.3%	4,005	28.2%	5,065	35.7%	5,713	40.3%		
2012	14,434	2,256	15.6%	4,061	28.1%	5,130	35.5%				
2013	15,209	2,349	15.4%	4,184	27.5%						
2014	14,988	2,272	15.2%								

	1st Year (2014)	2nd Year (2013)	3rd Year (2012)	4th Year (2011)	5th Year (2010)
<b>PERCENT RETURNED BY CURRENT OFFENDER CLASS (Based on Last Full Year's Returns)</b>					
1ST OFFENDER:	13.9%	11.5%	10.2%	8.2%	8.5%
2ND OFFENDER:	24.8%	27.0%	25.3%	24.6%	22.2%
3RD OFFENDER:	26.0%	26.2%	28.3%	27.6%	28.3%
4TH OFFENDER+:	35.1%	35.1%	36.2%	39.5%	40.9%
UNKNOWN:	0.2%	0.2%	0.0%	0.1%	0.1%

## DEPARTMENT OF PUBLIC SAFETY AND CORRECTIONS

### RECIDIVISM IN ADULT CORRECTIONS (TOTAL POPULATION - AGE)

March 18, 2016

**RECIDIVISM:** RETURN TO CUSTODY FOLLOWING CONVICTION FOR A NEW FELONY OR TECHNICAL REVOCATION OF SUPERVISION AFTER HAVING BEEN RELEASED FROM INCARCERATION THROUGH COMPLETED SENTENCE, RELEASED ON PAROLE, CONDITIONAL RELEASE, OR SPLIT PROBATION SENTENCE. OFFENDERS RELEASED TO A DETAINER, RELEASED IN ERROR, DECEASED, OR TRANSFERRED TO ANOTHER JURISDICTION ARE NOT INCLUDED. AN OFFENDER MAY BE RELEASED MULTIPLE TIMES BUT IS ONLY COUNTED ONCE PER RELEASE YEAR.

**OFFENDERS ARE TRACKED FOR A PERIOD OF TIME FROM DATE OF RELEASE BASED ON THE YEAR OF RETURN :**

**1st Year Returns:** 12 months  
**2nd Year Returns:** 24 months  
**3rd Year Returns:** 36 months  
**4th Year Returns:** 48 months  
**5th Year Returns:** 60 months

	Total Releases	1st Year Returns	%	2nd Year Returns	%	3rd Year Returns	%	4th Year Returns	%	5th Year Returns	%
<b>2004</b>	13,691	2,736	<b>20.0%</b>	4,374	<b>31.9%</b>	5,295	<b>38.7%</b>	5,892	<b>43.0%</b>	6,328	<b>46.2%</b>
<b>2005</b>	13,550	2,485	<b>18.3%</b>	4,188	<b>30.9%</b>	5,124	<b>37.8%</b>	5,762	<b>42.5%</b>	6,234	<b>46.0%</b>
<b>2006</b>	13,032	2,301	<b>17.7%</b>	3,827	<b>29.4%</b>	4,736	<b>36.3%</b>	5,376	<b>41.3%</b>	5,875	<b>45.1%</b>
<b>2007</b>	12,650	2,235	<b>17.7%</b>	3,732	<b>29.5%</b>	4,646	<b>36.7%</b>	5,265	<b>41.6%</b>	5,730	<b>45.3%</b>
<b>2008</b>	12,833	2,141	<b>16.7%</b>	3,676	<b>28.6%</b>	4,643	<b>36.2%</b>	5,277	<b>41.1%</b>	5,727	<b>44.6%</b>
<b>2009</b>	12,933	2,026	<b>15.7%</b>	3,579	<b>27.7%</b>	4,543	<b>35.1%</b>	5,103	<b>39.5%</b>	5,519	<b>42.7%</b>
<b>2010</b>	14,744	2,195	<b>14.9%</b>	4,055	<b>27.5%</b>	5,135	<b>34.8%</b>	5,777	<b>39.2%</b>	6,225	<b>42.2%</b>
<b>2011</b>	14,179	2,165	<b>15.3%</b>	4,005	<b>28.2%</b>	5,065	<b>35.7%</b>	5,713	<b>40.3%</b>		
<b>2012</b>	14,434	2,256	<b>15.6%</b>	4,061	<b>28.1%</b>	5,130	<b>35.5%</b>				
<b>2013</b>	15,209	2,349	<b>15.4%</b>	4,184	<b>27.5%</b>						
<b>2014</b>	14,988	2,272	<b>15.2%</b>								

	1st Year (2014)	2nd Year (2013)	3rd Year (2012)	4th Year (2011)	5th Year (2010)
<b>PERCENT RETURNED WITHIN EACH RELEASE AGE GROUP (Based on Last Full Year's Returns)</b>					
<=16	0.0%	0.0%	0.0%	0.0%	0.0%
17	0.0%	0.0%	0.0%	0.0%	0.0%
18	0.1%	0.1%	0.2%	0.2%	0.2%
19 - 20	0.6%	1.0%	1.6%	1.5%	1.5%
21 - 24	2.7%	4.9%	5.8%	6.1%	6.4%
25 - 29	3.0%	5.8%	7.9%	9.4%	9.3%
30 - 34	3.0%	5.6%	7.2%	8.0%	7.7%
35 - 39	2.1%	3.3%	4.2%	4.9%	5.4%
40 - 44	1.3%	2.4%	3.3%	4.1%	4.9%
45 - 49	1.1%	2.1%	2.7%	3.4%	3.8%
50 - 54	0.7%	1.4%	1.7%	2.0%	2.1%
55+	0.5%	0.8%	0.8%	1.0%	1.0%

## DEPARTMENT OF PUBLIC SAFETY AND CORRECTIONS

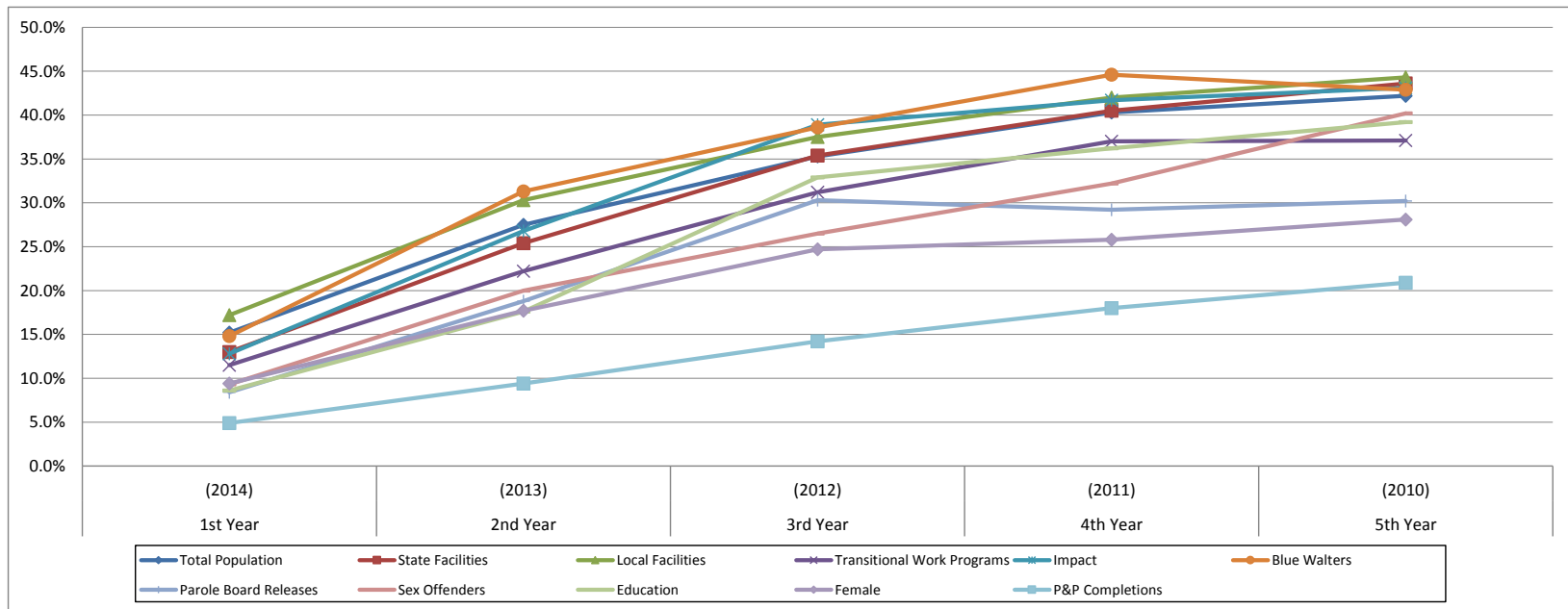
### RECIDIVISM IN ADULT CORRECTIONS

March 18, 2016

**RECIDIVISM:** RETURN TO CUSTODY FOLLOWING CONVICTION FOR A NEW FELONY OR TECHNICAL REVOCATION OF SUPERVISION AFTER HAVING BEEN RELEASED FROM INCARCERATION THROUGH COMPLETED SENTENCE, RELEASED ON PAROLE, CONDITIONAL RELEASE, OR SPLIT PROBATION SENTENCE. OFFENDERS RELEASED TO A DETAINER, RELEASED IN ERROR, DECEASED, OR TRANSFERRED TO ANOTHER JURISDICTION ARE NOT INCLUDED. AN OFFENDER MAY BE RELEASED MULTIPLE TIMES BUT IS ONLY COUNTED ONCE PER RELEASE YEAR.

**OFFENDERS ARE TRACKED FOR A PERIOD OF TIME FROM DATE OF RELEASE BASED ON THE YEAR OF RETURN :**

- 1st Year Returns:** 12 months
- 2nd Year Returns:** 24 months
- 3rd Year Returns:** 36 months
- 4th Year Returns:** 48 months
- 5th Year Returns:** 60 months





**Department of Public Safety and Corrections  
INCARCERATION ONLY : Admissions/Releases Comparison 1994-2015**

	1994			1995			1996			1997			1998			1999		
	admits	releases	net total	admits	releases	net total	admits	releases	net total	admits	releases	net total	admits	releases	net total	admits	releases	net total
Jan	1092	850	242	1041	963	78	1133	956	177	1198	994	204	1256	1058	198	1434	1147	287
Feb	856	781	75	974	885	89	1115	926	189	1115	921	194	1226	1020	206	1139	1142	-3
Mar	1083	919	164	1168	1016	152	1183	1040	143	1362	991	371	1387	1081	306	1468	1181	287
Apr	923	861	62	1095	932	163	1139	997	142	1332	1036	296	1401	1085	316	1316	1194	122
May	1105	903	202	1061	912	149	1278	1088	190	1362	1015	347	1342	1123	219	1357	1152	205
Jun	1027	957	70	1091	1015	76	1000	967	33	1230	1025	205	1318	1054	264	1251	1192	59
Jul	1051	895	156	981	948	33	1070	1026	44	1304	1076	228	1398	1142	256	1197	1284	-87
Aug	938	870	68	1146	957	189	1074	974	100	1245	1063	182	1281	1124	157	1335	1289	46
Sep	1114	891	223	1182	925	257	1135	964	171	1386	1104	282	1290	1147	143	1413	1255	158
Oct	1093	892	201	1053	1059	-6	1280	987	293	1350	1060	290	1231	1143	88	1257	1293	-36
Nov	969	875	94	1003	925	78	1018	963	55	1097	1059	38	1262	1095	167	1185	1082	103
Dec	813	943	-130	833	990	-157	1105	949	156	1075	1151	-76	1236	1176	60	1009	1140	-131
<b>TOTAL</b>	<b>12064</b>	<b>10637</b>	<b>1427</b>	<b>12628</b>	<b>11527</b>	<b>1101</b>	<b>13530</b>	<b>11837</b>	<b>1693</b>	<b>15056</b>	<b>12495</b>	<b>2561</b>	<b>15628</b>	<b>13248</b>	<b>2380</b>	<b>15361</b>	<b>14351</b>	<b>1010</b>

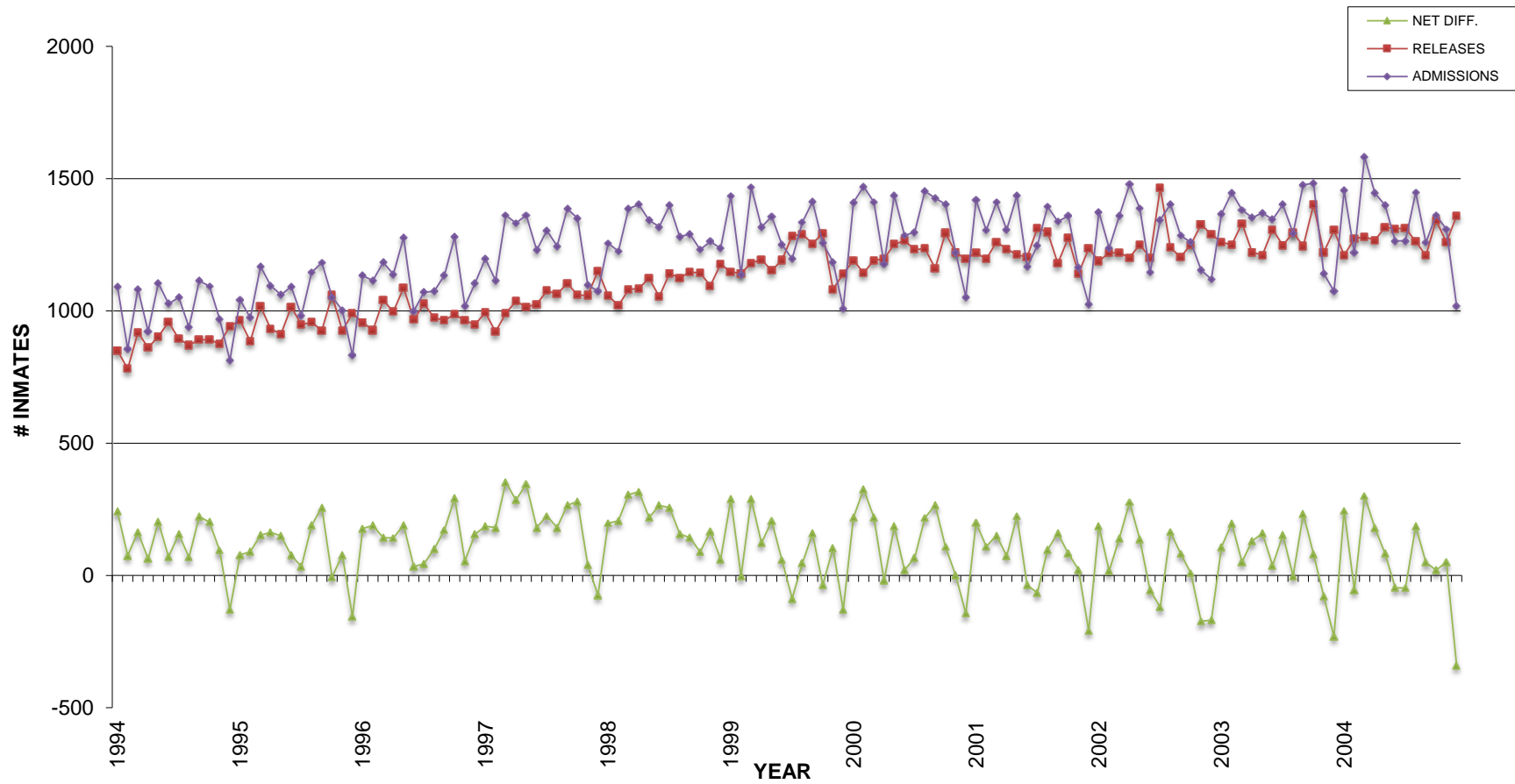
	2000			2001			2002			2003			2004			2005		
	admits	releases	net total	admits	releases	net total	admits	releases	net total	admits	releases	net total	admits	releases	net total	admits	releases	net total
Jan	1410	1191	219	1419	1220	199	1374	1188	186	1367	1259	108	1454	1210	244	1428	1275	153
Feb	1470	1144	326	1305	1196	109	1237	1220	17	1447	1250	197	1219	1273	-54	1150	1246	-96
Mar	1411	1191	220	1411	1260	151	1360	1220	140	1382	1331	51	1582	1281	301	1500	1310	190
Apr	1178	1198	-20	1307	1234	73	1479	1202	277	1352	1221	131	1446	1266	180	1427	1279	148
May	1437	1252	185	1437	1212	225	1388	1251	137	1370	1211	159	1399	1316	83	1564	1269	295
Jun	1285	1265	20	1166	1203	-37	1146	1201	-55	1345	1308	37	1264	1311	-47	1368	1220	148
Jul	1298	1231	67	1247	1313	-66	1344	1465	-121	1401	1248	153	1265	1313	-48	1217	1298	-81
Aug	1453	1235	218	1395	1298	97	1403	1238	165	1294	1296	-2	1448	1262	186	1501	1279	222
Sep	1426	1161	265	1338	1179	159	1285	1203	82	1477	1245	232	1258	1209	49	815	1427	-612
Oct	1403	1294	109	1359	1276	83	1259	1251	8	1482	1401	81	1362	1342	20	1089	1306	-217
Nov	1222	1221	1	1163	1141	22	1154	1327	-173	1142	1221	-79	1309	1259	50	1081	1266	-185
Dec	1053	1197	-144	1026	1236	-210	1119	1288	-169	1074	1305	-231	1019	1359	-340	866	1190	-324
<b>TOTAL</b>	<b>16046</b>	<b>14580</b>	<b>1466</b>	<b>15573</b>	<b>14768</b>	<b>805</b>	<b>15548</b>	<b>15054</b>	<b>494</b>	<b>16133</b>	<b>15296</b>	<b>837</b>	<b>16025</b>	<b>15401</b>	<b>624</b>	<b>15006</b>	<b>15365</b>	<b>-359</b>

	2006			2007			2008			2009			2010			2011		
	admits	releases	net total	admits	releases	net total	admits	releases	net total	admits	releases	net total	admits	releases	net total	admits	releases	net total
Jan	1213	1241	-28	1347	1204	143	1468	1276	192	1413	1289	124	1469	1338	131	1593	1456	137
Feb	1171	1185	-14	1320	1184	136	1345	1242	103	1318	1210	108	1273	1249	24	1470	1377	93
Mar	1449	1221	228	1480	1309	171	1420	1246	174	1572	1248	324	1558	1346	212	1497	1440	57
Apr	1125	1280	-155	1353	1214	139	1423	1263	160	1441	1328	113	1422	1494	-72	1443	1423	20
May	1449	1263	186	1520	1232	288	1327	1194	133	1445	1224	221	1510	1565	-55	1495	1415	80
Jun	1303	1241	62	1300	1243	57	1362	1169	193	1386	1257	129	1391	1409	-18	1366	1428	-62
Jul	1120	1267	-147	1286	1150	136	1451	1241	210	1489	1266	223	1308	1438	-130	1349	1398	-49
Aug	1523	1232	291	1522	1283	239	1557	1317	240	1607	1242	365	1571	1367	204	1666	1430	236
Sep	1384	1245	139	1383	1215	168	1135	1231	-96	1597	1241	356	1668	1346	322	1661	1370	291
Oct	1392	1249	143	1548	1301	247	1587	1290	297	1499	1292	207	1510	1832	-322	1510	1492	18
Nov	1276	1202	74	1202	1305	-103	1099	1218	-119	1371	1339	32	1272	1421	-149	1338	1373	-35
Dec	996	1332	-336	1048	1235	-187	1121	1345	-224	1099	1278	-179	1235	1490	-255	1123	1416	-293
<b>TOTAL</b>	<b>15401</b>	<b>14958</b>	<b>443</b>	<b>16309</b>	<b>14875</b>	<b>1434</b>	<b>16295</b>	<b>15032</b>	<b>1263</b>	<b>17237</b>	<b>15214</b>	<b>2023</b>	<b>17187</b>	<b>17295</b>	<b>-108</b>	<b>17511</b>	<b>17018</b>	<b>493</b>

	2012 #			2013 #			2014 #			2015 #			Totals		
	admits	releases	net total	admits	releases	net total	admits	releases	net total	admits	release	net total	admits	releases	net total
Jan	1574	1423	151	1602	1450	152	1426	1469	-43	1365	1599	-234	30076	21088	8988
Feb	1572	1323	249	1337	1418	-81	1426	1421	5	1250	1461	-211	27735	26074	1661
Mar	1672	1464	208	1369	1426	-57	1385	1467	-82	1667	1556	111	31366	27544	3822
Apr	1393	1410	-17	1510	1396	112	1456	1485	-29	1479	1549	-70	29440	27349	2091
May	1687	1469	218	1562	1538	24	1467	1460	7	1298	1521	-223	30860	27585	3275
Jun	1386	1493	-107	1278	1472	-194	1258	1511	-253	1388	1605	-217	20992	21336	-344
Jul	1317	1413	-96	1366	1572	-206	1459	1510	-51	1358	1439	-81	21275	21562	-287
Aug	1515	1437	78	1560	1538	22	1431	1365	66	1492	1511	-19	23938	21330	2608
Sep	1486	1406	80	1511	1504	7	1521	1543	-22	1377	1350	27	22322	20875	1447
Oct	1571	1442	129	1586	1555	31	1442	1636	-194	1388	1418	-30	22987	22377	610
Nov	1298	1394	-96	1251	1394	-143	1118	1498	-380	1211	1378	-167	19507	20957	-1450
Dec	1081	1448	-367	1121	1425	-304	1154	1607	-453	1151	1447	-296	17286	21598	-4312
<b>TOTAL</b>	<b>17552</b>	<b>17122</b>	<b>430</b>	<b>17053</b>	<b>17690</b>	<b>-637</b>	<b>16543</b>	<b>17972</b>	<b>-1429</b>	<b>16424</b>	<b>17834</b>	<b>-1410</b>	<b>297784</b>	<b>279675</b>	<b>18109</b>

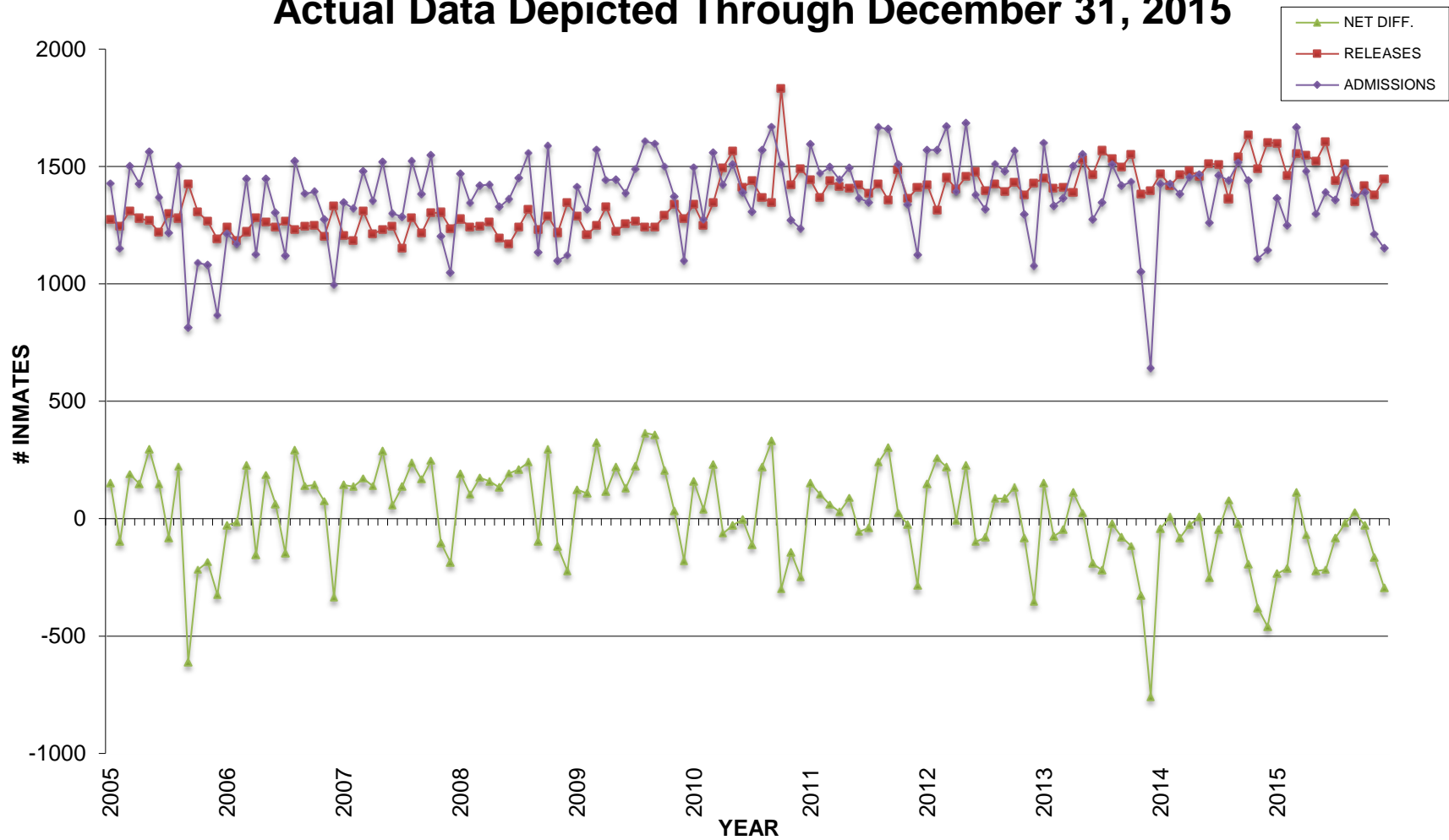
# INCARCERATION ONLY: ADMISSIONS/RELEASES COMPARISON FOR 1994 - 2004

Actual Data Depicted Through December 31, 2004



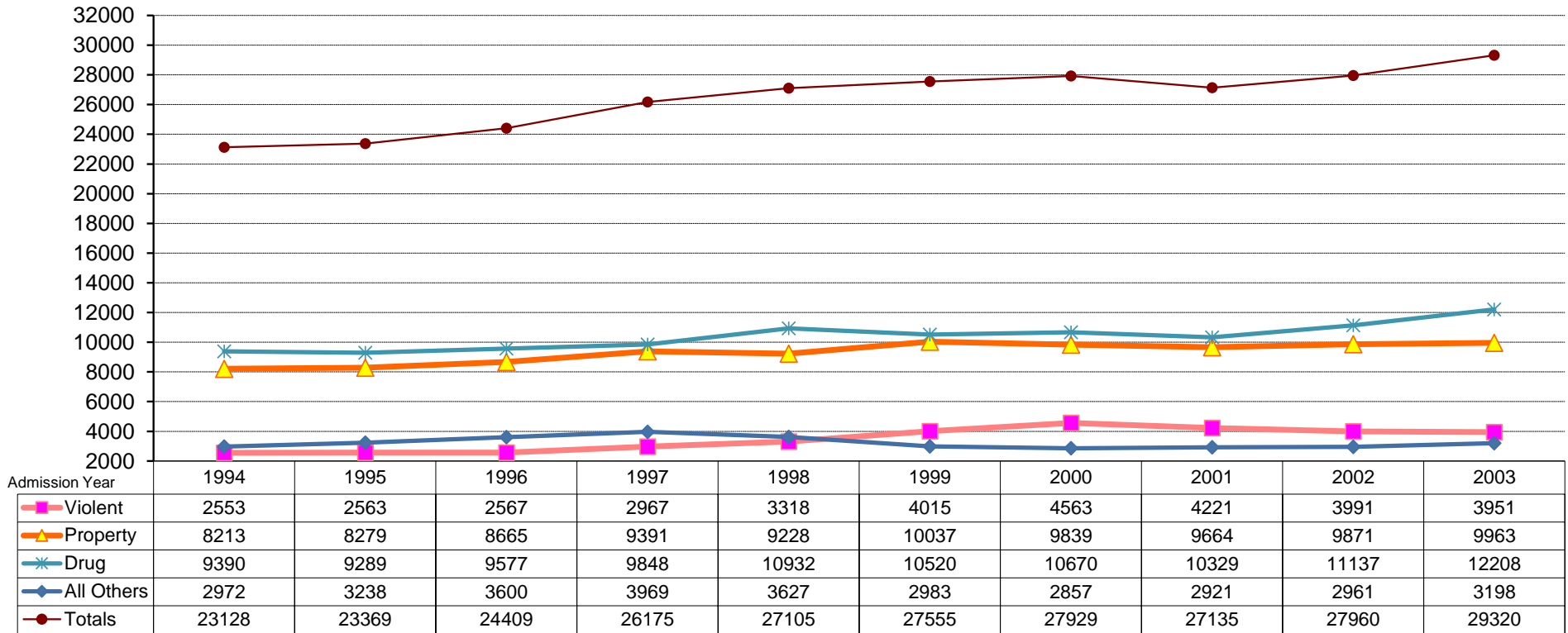
# INCARCERATION ONLY: ADMISSIONS/RELEASES COMPARISON FOR 2006 - 2015

**Actual Data Depicted Through December 31, 2015**



# Adult Admissions 1994-2003 (Incarceration & Supervision)

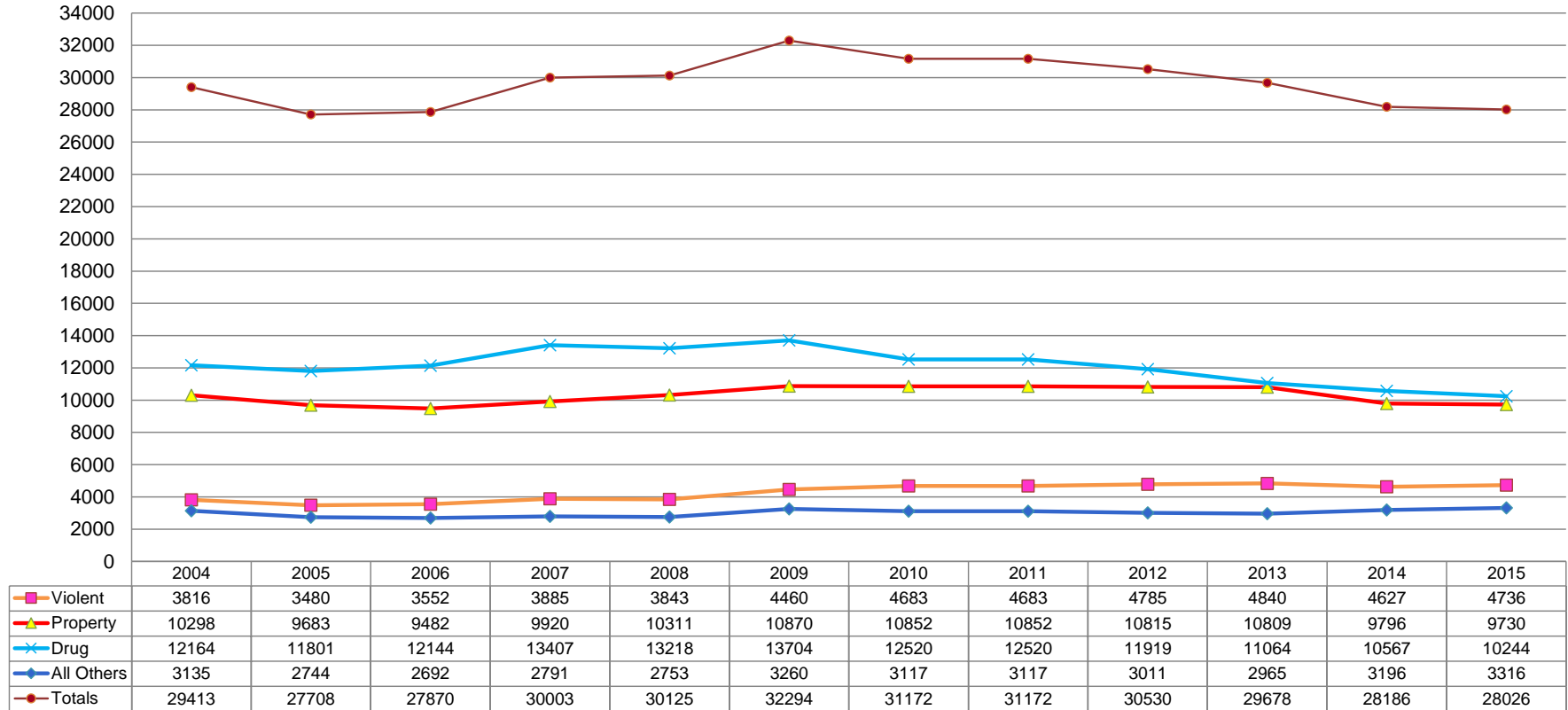
# Offenders



Based Upon Most Serious Commitment Crime

## Adult Admissions 2004-2015 (Incarceration & Supervision)

# Offenders

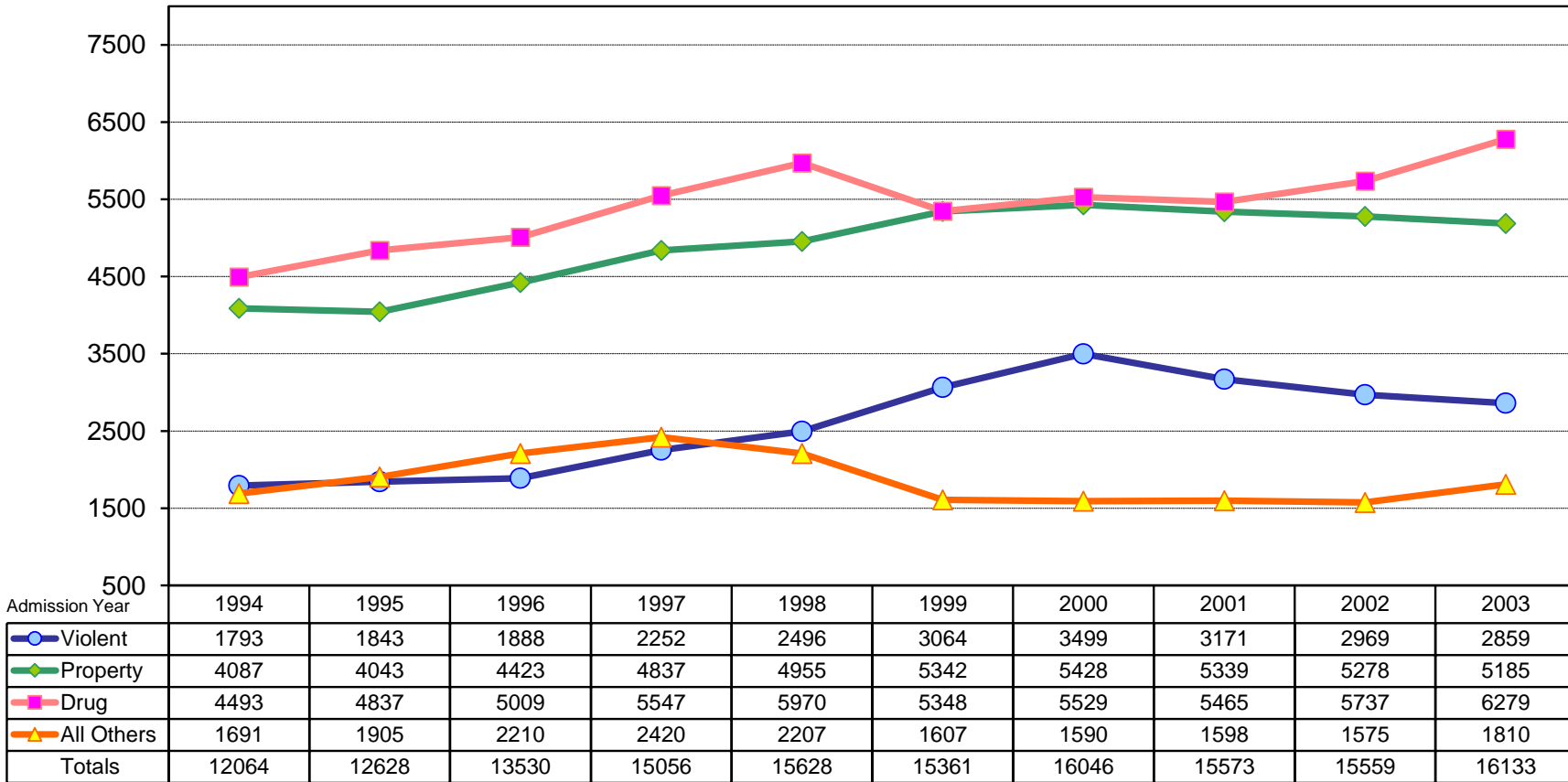


Based Upon Most Serious Commitment Crime

# Adult Admissions 1994-2003 (Incarceration Only)

# Offenders

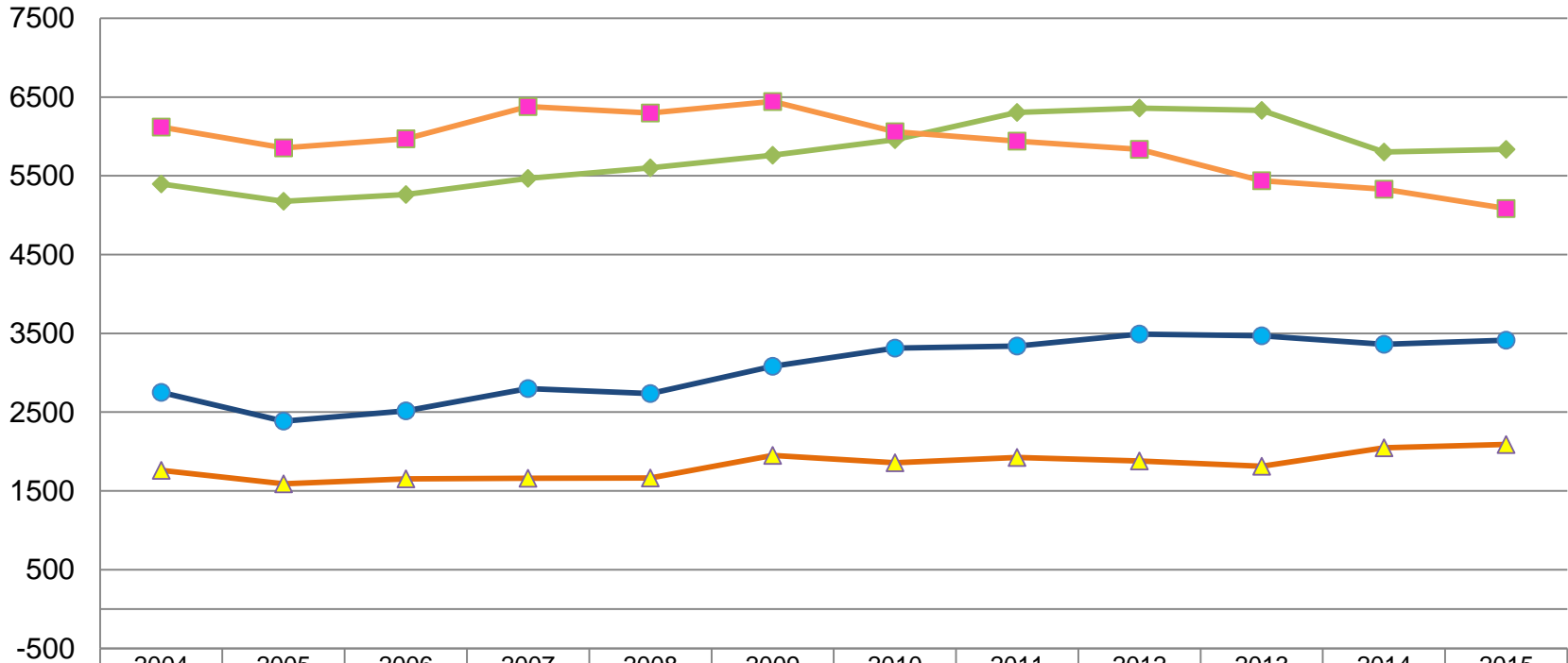
Based Upon Most Serious Commitment Crime



# Adult Admissions 2004-2015 (Incarceration Only)

Based Upon Most Serious Commitment Crime

# Offenders

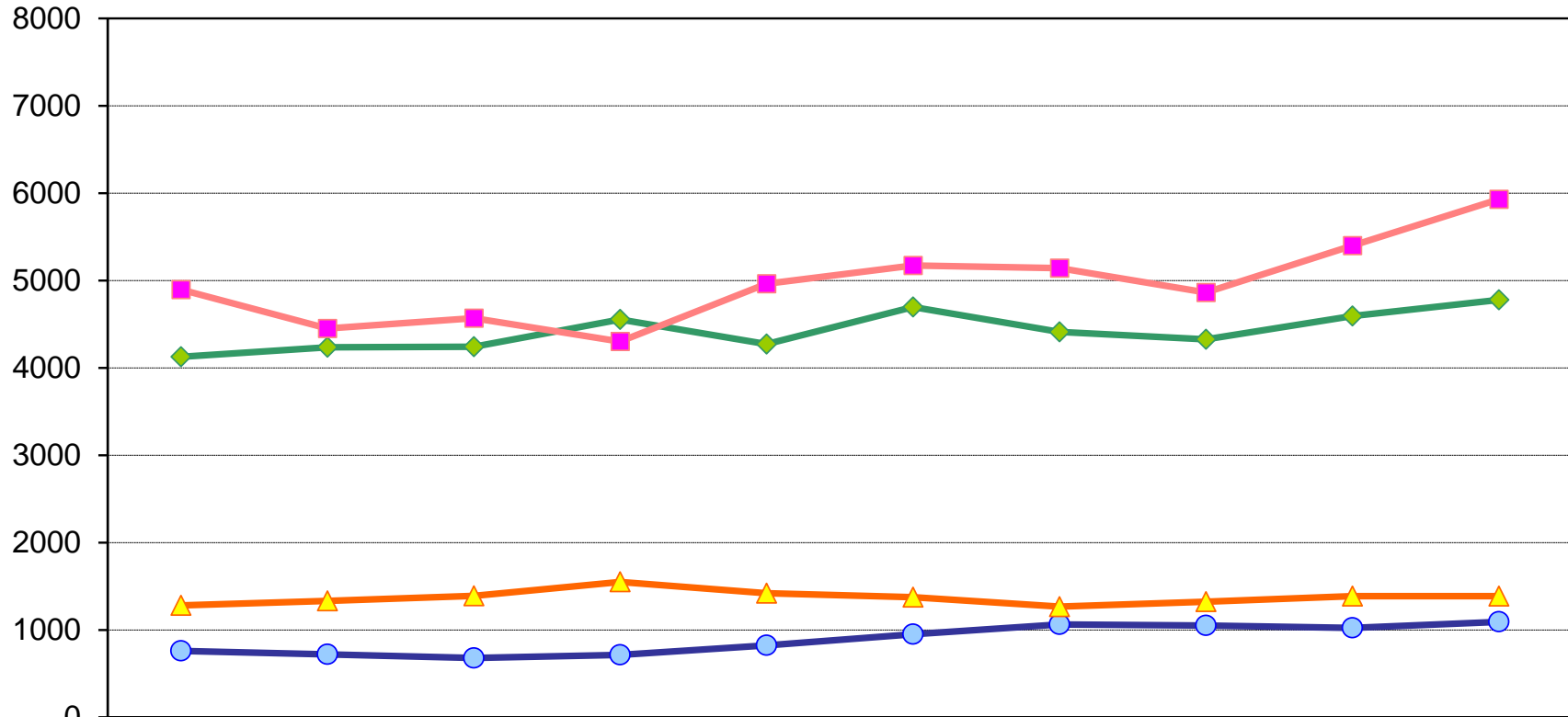


	2004	2005	2006	2007	2008	2009	2010	2011	2012	2013	2014	2015
● Violent	2749	2385	2518	2799	2735	3080	3311	3339	3490	3468	3362	3414
◆ Property	5396	5176	5263	5469	5600	5761	5960	6306	6359	6329	5802	5835
■ Drug	6120	5855	5968	6380	6296	6444	6060	5940	5834	5436	5330	5085
▲ All Others	1760	1590	1652	1661	1664	1952	1856	1923	1879	1812	2049	2090
Totals	16025	15006	15401	16309	16295	17237	17187	17508	17562	17045	16543	16424

# Adult Admissions 1994-2003 (Supervision Only)

Based Upon Most Serious Commitment Crime

# Offenders

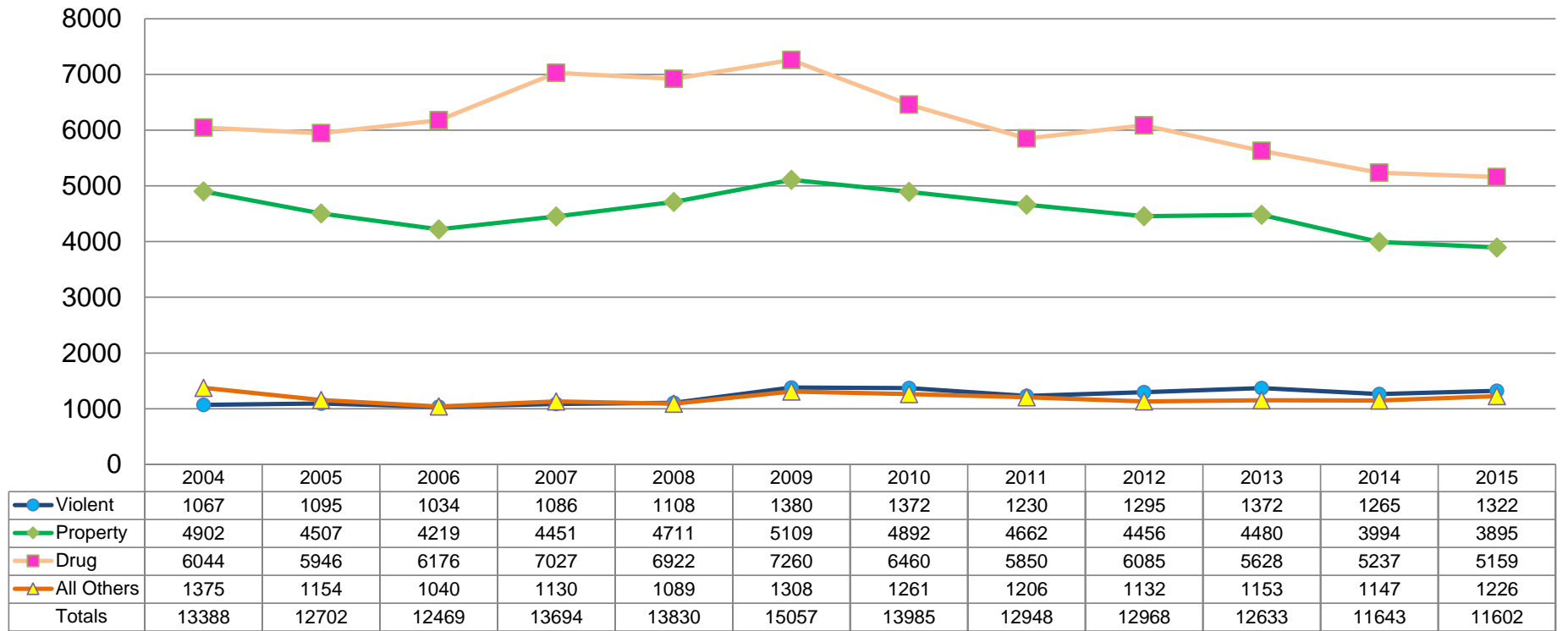


	1994	1995	1996	1997	1998	1999	2000	2001	2002	2003
Violent	760	720	679	715	822	951	1064	1050	1022	1092
Property	4126	4236	4242	4554	4273	4695	4411	4325	4593	4778
Drug	4897	4452	4568	4301	4962	5172	5141	4864	5400	5929
All Others	1281	1333	1390	1549	1420	1376	1267	1323	1386	1388
Totals	11064	10741	10879	11119	11477	12194	11883	11562	12401	13187



## Adult Admissions 2004-2015 (Supervision Only) Based Upon Most Serious Commitment Crime

# Offenders



DEPARTMENT OF PUBLIC SAFETY AND CORRECTIONS

Summary of Adult Admissions 1994 - 2014

(Based upon the Most Serious Commitment Crime)

1994	Total Admissions	% of Total	Avg. Lgth.* Inc Sent	Avg. Lgth. Prob Sent	Avg. Lgth. Par Sen	Avg. Lgth. Dim of Sent	% to Inc.	% to Prob. Supv.	3 Incarceration						Prob. New Fel.
									New Fel	Rev. NF	Rev. Tech.	Rev. Waiv	Eligibilities**		
													Parole	GTPS	
Violent Crimes	2553	11%	18.57	4.37	13.67	10.32	70%	30%	1281	81	288	143	47%	82%	760
Property Crimes	8213	36%	4.86	3.35	5.18	4.62	50%	50%	1774	479	1285	549	44%	89%	4126
Drug Crimes	9390	41%	5.37	3.68	5.43	5.19	48%	52%	2094	662	1283	454	59%	90%	4897
All Others	2972	13%	5.59	3.28	4.30	4.25	57%	43%	960	261	308	162	47%	93%	1281
Grand Total	23128		7.19	3.56	7.13	6.07	52%	48%	6109	1483	3164	1308	50%	89%	11064

1995	Total Admissions	% of Total	Avg. Lgth.* Inc Sent	Avg. Lgth. Prob Sent	Avg. Lgth. Par Sen	Avg. Lgth. Dim of Sent	% to Inc.	% to Prob. Supv.	3 Incarceration						Prob. New Fel.
									New Fel	Rev. NF	Rev. Tech.	Rev. Waiv	Eligibilities**		
													Parole	GTPS	
Violent Crimes	2563	11%	19.12	4.06	14.17	10.09	72%	28%	1256	85	355	147	48%	80%	720
Property Crimes	8279	35%	4.47	3.10	4.72	4.40	49%	51%	1684	445	1374	540	46%	89%	4236
Drug Crimes	9289	40%	5.25	3.44	5.80	5.10	52%	48%	2162	627	1546	502	60%	89%	4452
All Others	3238	14%	5.56	3.17	4.64	4.23	59%	41%	1063	225	398	219	50%	92%	1333
Grand Total	23369		7.07	3.31	7.56	5.89	54%	46%	6165	1382	3673	1408	52%	88%	10741

1996	Total Admissions	% of Total	Avg. Lgth.* Inc Sent	Avg. Lgth. Prob Sent	Avg. Lgth. Par Sen	Avg. Lgth. Dim of Sent	% to Inc.	% to Prob. Supv.	3 Incarceration						Prob. New Fel.
									New Fel	Rev. NF	Rev. Tech.	Rev. Waiv	Eligibilities**		
													Parole	GTPS	
Violent Crimes	2567	11%	18.98	3.63	13.82	9.07	74%	26%	1232	101	372	183	45%	75%	679
Property Crimes	8665	35%	4.17	2.94	4.36	4.35	51%	49%	1738	427	1414	844	48%	89%	4242
Drug Crimes	9577	39%	5.00	3.24	5.97	5.03	52%	48%	2126	603	1569	711	58%	87%	4568
All Others	3600	15%	5.18	3.02	4.72	4.51	61%	39%	1248	233	398	331	50%	91%	1390
Grand Total	24409		6.71	3.12	6.99	5.59	55%	45%	6344	1364	3753	2069	52%	87%	10879

1 Crime category percentage of total admissions.

2 Percentage of admissions by crime category sentenced to incarceration.

3 Percentage of admissions by crime category sentenced to probation supervision.

\* In the case of revocations due to new felony, the admission count may reflect the original commitment crime or the new felony, depending on the sentence length. The longer sentence length determines which crime is counted.

\*\* Based upon the number of persons sentenced to incarcerations and those sentenced to probation supervision.

**DEPARTMENT OF PUBLIC SAFETY AND CORRECTIONS**  
**Summary of Adult Admissions 1994 - 2014**

(Based upon the Most Serious Commitment Crime)

1997	1		2						3		Incarceration						Prob. New Fel.
	Total Admissions	% of Total	Avg. Lgth.* Inc Sent	Avg. Lgth. Prob Sent	Avg. Lgth. Par Sen	Avg. Lgth. Dim of Sent	% to Inc.	% to Prob. Supv.	New Fel	Rev. NF	Rev. Tech.	Rev. Waiv	Eligibilities**				
													Parole	GTPS			
Violent Crimes	2967	11%	17.26	3.23	12.08	8.38	76%	24%	1459	99	428	266	36%	63%	715		
Property Crimes	9391	36%	4.00	2.74	4.39	4.08	52%	48%	1927	366	1622	922	46%	81%	4554		
Drug Crimes	9848	38%	5.12	3.10	5.91	4.91	56%	44%	2092	553	1904	998	48%	74%	4301		
All Others	3969	15%	5.01	2.99	4.49	4.27	61%	39%	1288	210	493	429	46%	81%	1549		
Grand Total	26175		6.56	2.95	6.55	5.29	58%	42%	6766	1228	4447	2615	45%	76%	11119		

1998	1		2						3		Incarceration						Prob. New Fel.
	Total Admissions	% of Total	Avg. Lgth.* Inc Sent	Avg. Lgth. Prob Sent	Avg. Lgth. Par Sen	Avg. Lgth. Dim of Sent	% to Inc.	% to Prob. Supv.	New Fel	Rev. NF	Rev. Tech.	Rev. Waiv	Eligibilities**				
													Parole	GTPS			
Violent Crimes	3318	12%	14.93	3.16	9.86	8.38	75%	25%	1425	142	539	390	32%	58%	822		
Property Crimes	9228	34%	3.71	2.80	4.36	3.95	54%	46%	1760	352	1674	1169	42%	73%	4273		
Drug Crimes	10932	40%	4.92	3.00	5.47	4.81	55%	45%	2561	474	1768	1167	41%	62%	4962		
All Others	3627	13%	5.18	3.35	4.45	4.32	61%	39%	1252	123	448	384	44%	71%	1420		
Grand Total	27105		6.17	2.98	5.86	5.20	58%	42%	6998	1091	4429	3110	40%	66%	11477		

1999	1		2						3		Incarceration						Prob. New Fel.
	Total Admissions	% of Total	Avg. Lgth.* Inc Sent	Avg. Lgth. Prob Sent	Avg. Lgth. Par Sen	Avg. Lgth. Dim of Sent	% to Inc.	% to Prob. Supv.	New Fel	Rev. NF	Rev. Tech.	Rev. Waiv	Eligibilities**				
													Parole	GTPS			
Violent Crimes	4015	15%	13.86	1.31	9.18	8.27	76%	24%	1474	293	663	634	38%	75%	951		
Property Crimes	10037	36%	3.73	2.82	4.18	3.67	53%	47%	1804	421	1735	1382	46%	84%	4695		
Drug Crimes	10520	38%	4.76	2.99	5.03	4.50	51%	49%	2261	340	1696	1051	50%	78%	5172		
All Others	2983	11%	4.20	3.09	4.39	4.16	54%	46%	1005	41	314	247	56%	85%	1376		
Grand Total	27555		6.16	2.96	5.40	4.89	56%	44%	6544	1095	4408	3314	47%	80%	12194		

1 Crime category percentage of total admissions.  
 2 Percentage of admissions by crime category sentenced to incarceration.  
 3 Percentage of admissions by crime category sentenced to probation supervision.  
 \* In the case of revocations due to new felony, the admission count may reflect the original commitment crime or the new felony, depending on the sentence length. The longer sentence length determines which crime is counted.  
 \*\* Based upon the number of persons sentenced to incarceration and those sentenced to probation supervision.

**DEPARTMENT OF PUBLIC SAFETY AND CORRECTIONS**  
**Summary of Adult Admissions 1994 - 2014**  
 (Based upon the Most Serious Commitment Crime)

2000	1		2						3		Incarceration						Prob. New Fel.
	Total Admissions	% of Total	Avg. Lgth.* Inc Sent	Avg. Lgth. Prob Sent	Avg. Lgth. Par Sen	Avg. Lgth. Dim of Sent	% to Inc.	% to Prob. Supv.	New Fel	Rev. NF	Rev. Tech.	Rev. Waiv	Eligibilities**				
													Parole	GTPS			
Violent Crimes	4563	16%	13.10	4.22	8.06	8.41	77%	23%	1677	285	796	741	37%	81%	1064		
Property Crimes	9839	35%	4.23	3.10	4.31	3.95	55%	45%	1769	427	1770	1462	37%	90%	4411		
Drug Crimes	10670	38%	4.92	3.14	5.07	4.45	52%	48%	2390	388	1652	1091	44%	88%	5149		
All Others	2857	10%	3.84	3.22	3.70	3.80	56%	44%	924	58	341	267	51%	85%	1267		
Grand Total	27929		6.37	3.23	5.26	5.02	57%	43%	6760	1158	4559	3561	41%	87%	11891		

2001	1		2						3		Incarceration						Prob. New Fel.
	Total Admissions	% of Total	Avg. Lgth.* Inc Sent	Avg. Lgth. Prob Sent	Avg. Lgth. Par Sen	Avg. Lgth. Dim of Sent	% to Inc.	% to Prob. Supv.	New Fel	Rev. NF	Rev. Tech.	Rev. Waiv	Eligibilities**				
													Parole	GTPS			
Violent Crimes	4221	16%	12.70	3.47	8.36	8.61	75%	25%	1564	233	740	634	36%	79%	1050		
Property Crimes	9664	36%	4.23	3.07	4.26	4.02	55%	45%	1722	415	1689	1513	34%	91%	4325		
Drug Crimes	10329	38%	4.75	3.23	5.00	4.49	53%	47%	2372	367	1573	1153	41%	89%	4864		
All Others	2921	11%	3.98	3.24	4.21	3.94	55%	45%	858	49	386	305	50%	80%	1323		
Grand Total	27135		6.11	3.19	5.31	5.03	57%	43%	6516	1064	4388	3605	38%	87%	11562		

2002	1		2						3		Incarceration						Prob. New Fel.
	Total Admissions	% of Total	Avg. Lgth.* Inc Sent	Avg. Lgth. Prob Sent	Avg. Lgth. Par Sen	Avg. Lgth. Dim of Sent	% to Inc.	% to Prob. Supv.	New Fel	Rev. NF	Rev. Tech.	Rev. Waiv	Eligibilities**				
													Parole	GTPS			
Violent Crimes	3991	14%	12.59	3.27	8.25	8.20	74%	26%	1501	199	684	585	36%	79%	1022		
Property Crimes	9871	35%	4.06	3.02	4.24	3.91	53%	47%	1814	370	1690	1404	38%	92%	4593		
Drug Crimes	11137	38%	4.50	3.11	4.67	4.23	52%	48%	2480	345	1698	1214	42%	90%	5400		
All Others	2961	11%	4.25	3.20	4.43	4.09	53%	47%	854	62	405	254	53%	80%	1386		
Grand Total	27960		5.87	3.10	5.10	4.79	56%	44%	6649	976	4477	3457	41%	88%	12401		

1 Crime category percentage of total admissions.  
 2 Percentage of admissions by crime category sentenced to incarceration.  
 3 Percentage of admissions by crime category sentenced to probation supervision.  
 \* In the case of revocations due to new felony, the admission count may reflect the original commitment crime or the new felony, depending on the sentence length. The longer sentence length determines which crime is counted.  
 \*\* Based upon the number of persons sentenced to incarceration and those sentenced to probation supervision.

**DEPARTMENT OF PUBLIC SAFETY AND CORRECTIONS**  
**Summary of Adult Admissions 1994 - 2014**  
 (Based upon the Most Serious Commitment Crime)

	1		2						3		Incarceration						Prob. New Fel.
	Total Admissions	% of Total	Avg. Lgth.* Inc Sent	Avg. Lgth. Prob Sent	Avg. Lgth. Par Sent	Avg. Lgth. Dim of Sent	% to Inc.	% to Prob. Supv.	New Fel	Rev. NF	Rev. Tech.	Rev. Waiv	Eligibilities**				
													Parole	GTPS			
<b>2003</b>																	
Violent Crimes	3951	13%	12.35	3.22	8.56	8.68	72%	28%	1518	189	608	544	37%	79%	1092		
Property Crimes	9963	34%	3.89	3.10	3.96	3.73	52%	48%	1787	355	1616	1427	35%	93%	4778		
Drug Crimes	12208	38%	4.40	3.07	4.76	4.17	51%	49%	2560	394	1856	1469	40%	94%	5929		
All Others	3198	11%	4.73	3.22	4.68	4.52	57%	43%	877	83	481	369	46%	80%	1388		
Grand Total	29320		5.68	3.11	5.17	4.76	55%	45%	6742	1021	4561	3809	39%	89%	13187		

	1		2						3		Incarceration						Prob. New Fel.
	Total Admissions	% of Total	Avg. Lgth.* Inc Sent	Avg. Lgth. Prob Sent	Avg. Lgth. Par Sent	Avg. Lgth. Dim of Sent	% to Inc.	% to Prob. Supv.	New Fel	Rev. NF	Rev. Tech.	Rev. Waiv	Eligibilities**				
													Parole	GTPS			
<b>2004</b>																	
Violent Crimes	3816	13%	11.83	3.27	7.62	7.92	72%	28%	1540	156	567	486	37%	8%	1067		
Property Crimes	10298	35%	3.84	3.02	4.02	3.73	52%	48%	1873	384	1683	1456	37%	94%	4902		
Drug Crimes	12164	41%	4.17	3.18	4.60	4.03	50%	50%	2406	443	1780	1491	42%	93%	6044		
All Others	3135	11%	4.41	3.23	4.75	4.21	56%	44%	871	83	458	348	47%	81%	1375		
Grand Total	29413		5.40	3.14	4.92	4.52	54%	46%	6690	1066	4488	3781	40%	90%	13388		

	1		2						3		4						Prob. New Fel.
	Total Admissions	% of Total	Avg. Lgth.* Inc Sent	Avg. Lgth. Prob Sent	Avg. Lgth. Par Sent	Avg. Lgth. Dim of Sent	% to Inc.	% to Prob. Supv.	New Fel	Rev. NF	Rev. Tech.	Rev. Waiv	Waiv Tech	Waiv Pend	Eligibilities**		
													Parole	GTPS			
<b>2005</b>																	
Violent Crimes	3480	13%	11.81	3.25	7.92	8.46	59%	31%	1326	143	448	125	189	154	40%	79%	1095
Property Crimes	9683	35%	3.80	2.99	4.03	3.67	42%	47%	1723	411	1554	356	647	485	40%	95%	4507
Drug Crimes	11801	43%	4.12	3.11	4.47	4.01	40%	50%	2301	437	1542	400	630	545	42%	95%	5946
All Others	2744	10%	5.35	3.92	5.95	5.13	52%	42%	787	92	405	134	102	70	47%	80%	1154
Grand Total	27708		5.36	3.16	5.02	4.60	54%	46%	6137	1083	3949	1015	1568	1254	42%	91%	12702

1 Crime category percentage of total admissions.  
 2 Percentage of admissions by crime category sentenced to incarceration.  
 3 Percentage of admissions by crime category sentenced to probation supervision.  
 4 Revocations/Waivers has been removed as of May, 2005 and has been replaced with Waiver/Technical and Waiver/Pending  
 \* In the case of revocations due to new felony, the admission count may reflect the original commitment crime or the new felony, depending on the sentence length. The longer sentence length determines which crime is counted.  
 \*\* Based upon the number of persons sentenced to incarceration and those sentenced to probation supervision.

**DEPARTMENT OF PUBLIC SAFETY AND CORRECTIONS**  
**Summary of Adult Admissions 1994 - 2014**  
 (Based upon the Most Serious Commitment Crime)

2006 ***	1		2						3			4						Prob. New Fel.
	Total Admissions	% of Total	Avg. Lgth.* Inc Sent	Avg. Lgth. Prob Sent	Avg. Lgth. Par Sent	Avg. Lgth. Dim of Sent	% to Inc.	% to Prob. Supv.	New Fel	Rev. NF	Rev. Tech.	Waiv Tech	Waiv Pend	Inc. Total	Eligibilities**			
															Parole	GTPS		
Violent Crimes	3552	13%	12.35	3.37	8.66	8.53	58%	29%	1382	164	516	174	282	2518	40%	76%	1034	
Property Crimes	9482	34%	4.58	3.21	4.38	4.33	39%	44%	1848	416	1461	592	946	5263	33%	92%	4219	
Drug Crimes	12144	44%	4.88	3.30	4.87	4.61	37%	51%	2486	480	1547	548	907	5968	37%	94%	6176	
All Others	2692	10%	5.31	3.37	5.15	4.87	49%	39%	871	83	376	145	177	1652	43%	79%	1040	
Grand Total	27870		6.05	3.28	5.42	5.08	55%	45%	6587	1143	3900	1459	2312	15401	37%	89%	12469	

2007 ***	1		2						3			4						Prob. New Fel.
	Total Admissions	% of Total	Avg. Lgth.* Inc Sent	Avg. Lgth. Prob Sent	Avg. Lgth. Par Sent	Avg. Lgth. Dim of Sent	% to Inc.	% to Prob. Supv.	New Fel	Rev. NF	Rev. Tech.	Waiv Tech	Waiv Pend	Inc. Total	Eligibilities**			
															Parole	GTPS		
Violent Crimes	3885	13%	11.59	3.35	8.22	8.18	59%	28%	1559	215	537	169	319	2799	38%	76%	1086	
Property Crimes	9920	33%	4.50	3.27	4.29	4.29	40%	45%	2102	403	1481	252	1231	5469	36%	92%	4451	
Drug Crimes	13407	45%	4.81	3.25	4.70	4.60	37%	52%	2855	496	1582	280	1167	6380	39%	93%	7027	
All Others	2791	9%	5.24	3.39	5.11	4.73	50%	40%	965	96	336	87	177	1661	47%	79%	1130	
Grand Total	30003		5.91	3.27	5.22	5.04	54%	46%	7481	1210	3936	788	2894	16309	39%	89%	13694	

2008 ***	1		2						3			4						Prob. New Fel.
	Total Admissions	% of Total	Avg. Lgth.* Inc Sent	Avg. Lgth. Prob Sent	Avg. Lgth. Par Sent	Avg. Lgth. Dim of Sent	% to Inc.	% to Prob. Supv.	New Fel	Rev. NF	Rev. Tech.	Waiv Tech	Waiv Pend	Inc. Total	Eligibilities**			
															Parole	GTPS		
Violent Crimes	3843	13%	11.86	3.32	8.00	8.18	60%	29%	1629	185	473	131	317	2735	41%	77%	1108	
Property Crimes	10311	34%	4.42	3.23	4.29	4.26	41%	46%	2243	502	1437	270	1148	5600	39%	92%	4711	
Drug Crimes	13218	44%	4.98	3.20	4.81	4.70	38%	52%	2882	510	1599	212	1093	6296	42%	94%	6922	
All Others	2753	9%	5.81	3.26	4.85	4.88	50%	40%	1032	75	282	82	193	1664	45%	80%	1089	
Grand Total	30125		6.03	3.23	5.18	5.07	54%	46%	7786	1272	3791	695	2751	16295	41%	89%	13830	

- 1 Crime category percentage of total admissions.
- 2 Percentage of admissions by crime category sentenced to incarceration.
- 3 Percentage of admissions by crime category sentenced to probation supervision.
- 4 Revocations/Waivers has been removed as of May, 2005 and has been replaced with Waiver/Technical and Waiver/Pending
- \* In the case of revocations due to new felony, the admission count may reflect the original commitment crime or the new felony, depending on the sentence length. The longer sentence length determines which crime is counted.
- \*\* Based upon the number of persons sentenced to incarceration and those sentenced to probation supervision.

**DEPARTMENT OF PUBLIC SAFETY AND CORRECTIONS**  
**Summary of Adult Admissions 1994 - 2014**  
 (Based upon the Most Serious Commitment Crime)

2009 ***	1		2						3		4							Prob. New Fel.
	Total Admissions	% of Total	Avg. Lgth.* Inc Sent	Avg. Lgth. Prob Sent	Avg. Lgth. Par Sent	Avg. Lgth. Dim of Sent	% to Inc.	% to Prob. Supv.	Incarceration									
									New Fel	Rev. NF	Rev. Tech.	Waiv Tech	Waiv Pend	Inc. Total	Eligibilities**			
Parole	GTPS																	
Violent Crimes	4460	14%	10.15	3.38	8.44	8.61	61%	31%	1987	237	502	96	258	3080	42%	76%	1380	
Property Crimes	10870	34%	4.60	3.29	4.51	4.49	41%	47%	2325	547	1563	202	1124	5761	40%	93%	5109	
Drug Crimes	13704	42%	5.05	3.29	4.70	4.81	38%	53%	3019	570	1684	147	1024	6444	40%	95%	7260	
All Others	3260	10%	4.96	3.28	4.64	4.52	53%	40%	1350	77	315	58	152	1952	46%	80%	1308	
Grand Total	32294		5.80	3.30	5.31	5.25	53%	47%	8681	1431	4064	503	2558	17237	41%	89%	15057	

2010 ***	1		2						3		4							Prob. New Fel.
	Total Admissions	% of Total	Avg. Lgth.* Inc Sent	Avg. Lgth. Prob Sent	Avg. Lgth. Par Sent	Avg. Lgth. Dim of Sent	% to Inc.	% to Prob. Supv.	Incarceration									
									New Fel	Rev. NF	Rev. Tech.	Waiv Tech	Waiv Pend	Inc. Total	Eligibilities**			
Parole	GTPS																	
Violent Crimes	4613	15%	10.25	3.67	8.20	8.65	62%	30%	2102	251	526	19	343	3241	46%	79%	1372	
Property Crimes	10831	35%	4.78	3.38	4.60	4.67	37%	45%	2587	558	1469	144	1181	5939	44%	93%	4892	
Drug Crimes	12541	40%	5.32	3.38	4.84	5.12	39%	52%	2942	576	1421	165	977	6081	43%	95%	6460	
All Others	3187	10%	5.13	3.27	4.45	4.68	54%	40%	1379	58	273	89	127	1926	47%	79%	1261	
Grand Total	31172		6.07	3.41	5.40	5.51	55%	45%	9010	1443	3689	417	2628	17187	44%	90%	13985	

2011 ***	1		2						3		4							Prob. New Fel.
	Total Admissions	% of Total	Avg. Lgth.* Inc Sent	Avg. Lgth. Prob Sent	Avg. Lgth. Par Sent	Avg. Lgth. Dim of Sent	% to Inc.	% to Prob. Supv.	Incarceration									
									New Fel	Rev. NF	Rev. Tech.	Waiv Tech	Waiv Pend	Inc. Total	Eligibilities**			
Parole	GTPS																	
Violent Crimes	4568	15%	10.91	3.62	8.92	8.90	62%	27%	2083	284	448	97	426	3338	44%	77%	1230	
Property Crimes	10967	36%	4.58	3.37	4.67	4.50	43%	43%	2613	660	1490	185	1357	6305	44%	93%	4662	
Drug Crimes	11791	39%	5.11	3.33	4.90	4.90	40%	50%	2801	547	1422	136	1035	5941	44%	94%	5850	
All Others	3130	10%	5.18	3.25	4.76	4.70	56%	39%	1426	75	266	27	130	1924	47%	80%	1206	
Grand Total	30456		6.04	3.37	5.58	5.39	57%	43%	8923	1566	3626	445	2948	17508	44%	89%	12948	

1 Crime category percentage of total admissions.  
 2 Percentage of admissions by crime category sentenced to incarceration.  
 3 Percentage of admissions by crime category sentenced to probation supervision.  
 4 Revocations/Waivers has been removed as of May, 2005 and has been replaced with Waiver/Technical and Waiver/Pending  
 \* In the case of revocations due to new felony, the admission count may reflect the original commitment crime or the new felony, depending on the sentence length. The longer sentence length determines which crime is counted.  
 \*\* Based upon the number of persons sentenced to incarceration and those sentenced to probation supervision.

**DEPARTMENT OF PUBLIC SAFETY AND CORRECTIONS**  
**Summary of Adult Admissions 1994 - 2015**  
 (Based upon the Most Serious Commitment Crime)

2012 # ***	1		2						3		4							Prob. New Fel.
	Total Admissions	% of Total	Avg. Lgth.* Inc Sent	Avg. Lgth. Prob Sent	Avg. Lgth. Par Sen	Avg. Lgth. Dim of Sent	% to Inc.	% to Prob. Supv.	Incarceration									
									New Fel	Rev. NF	Rev. Tech.	Waiv Tech	Waiv Pend	Inc. Total	Eligibilities**			
Parole	GTPS																	
Violent Crimes	4785	16%	9.37	3.59	8.02	8.15	62%	27%	2230	262	488	80	430	3490	43%	79%	1295	
Property Crimes	10815	35%	4.58	3.33	4.58	4.55	45%	41%	2784	635	1420	213	1307	6359	39%	94%	4456	
Drug Crimes	11919	39%	5.16	3.36	4.88	5.00	39%	51%	2856	571	1278	147	982	5834	40%	97%	6085	
All Others	3011	10%	5.16	3.30	4.58	4.53	56%	38%	1371	65	243	39	161	1879	42%	82%	1132	
Grand Total	30530		5.79	3.37	5.42	5.34	58%	42%	9241	1533	3429	479	2880	17562	40%	90%	12968	

2013 # ***	1		2						3		4							Prob. New Fel.
	Total Admissions	% of Total	Avg. Lgth.* Inc Sent	Avg. Lgth. Prob Sent	Avg. Lgth. Par Sen	Avg. Lgth. Dim of Sent	% to Inc.	% to Prob. Supv.	Incarceration									
									New Fel	Rev. NF	Rev. Tech.	Waiv Tech	Waiv Pend	Inc. Total	Eligibilities**			
Parole	GTPS																	
Violent Crimes	4840	16%	9.21	3.54	7.18	7.75	59%	28%	2090	230	536	109	503	3468	40%	80%	1372	
Property Crimes	10809	36%	4.62	3.34	4.53	4.58	43%	41%	2564	547	1492	285	1441	6329	39%	94%	4480	
Drug Crimes	11064	37%	5.07	3.32	4.70	4.96	38%	51%	2497	481	1197	216	1045	5436	38%	97%	5628	
All Others	2965	10%	5.23	3.34	4.88	4.60	54%	39%	1284	54	267	45	162	1812	44%	79%	1153	
Grand Total	29678		5.76	3.35	5.17	5.28	57%	43%	8435	1312	3492	655	3151	17045	39%	90%	12633	

2014	1		2						3		4							Prob. New Fel.
	Total Admissions	% of Total	Avg. Lgth.* Inc Sent	Avg. Lgth. Prob Sent	Avg. Lgth. Par Sen	Avg. Lgth. Dim of Sent	% to Inc.	% to Prob. Supv.	Incarceration									
									New Fel	Rev. NF	Rev. Tech.	Waiv Tech	Waiv Pend	Inc. Total	Eligibilities**			
Parole	GTPS																	
Violent Crimes	4627	16%	9.25	3.44	7.58	7.71	59%	27%	1988	273	478	90	533	3362	40%	80%	1265	
Property Crimes	9796	35%	4.62	3.22	4.61	4.57	42%	41%	2165	550	1406	244	1437	5802	39%	97%	3994	
Drug Crimes	10567	37%	5.08	3.35	4.67	4.98	38%	50%	2411	470	1185	187	1077	5330	39%	97%	5237	
All Others	3196	11%	5.21	3.31	5.08	4.73	56%	36%	1484	60	240	63	202	2049	35%	76%	1147	
Grand Total	28186		5.78	3.35	5.31	5.29	59%	41%	8048	1353	3309	584	3249	16543	39%	91%	11643	

2015	1		2						3		4							Prob. New Fel.
	Total Admissions	% of Total	Avg. Lgth.* Inc Sent	Avg. Lgth. Prob Sent	Avg. Lgth. Par Sen	Avg. Lgth. Dim of Sent	% to Inc.	% to Prob. Supv.	Incarceration									
									New Fel	Rev. NF	Rev. Tech.	Waiv Tech	Waiv Pend	Inc. Total	Eligibilities**			
Parole	GTPS																	
Violent Crimes	4736	17%	9.05	3.84	7.78	7.55	60%	28%	2077	276	471	110	480	3414	39%	79%	1322	
Property Crimes	9730	35%	4.71	3.27	4.56	4.65	43%	40%	2359	619	1250	247	1360	5835	39%	97%	3895	
Drug Crimes	10244	37%	5.12	3.30	4.69	4.92	39%	50%	2328	502	1116	182	957	5085	38%	97%	5159	
All Others	3316	12%	5.01	3.34	5.06	4.47	56%	37%	1566	72	224	41	187	2090	34%	78%	1226	
Grand Total	28026		5.78	3.36	5.34	5.25	59%	41%	8330	1469	3061	580	2984	16424	38%	91%	11602	

1 Crime category percentage of total admissions.  
 2 Percentage of admissions by crime category sentenced to incarceration.  
 3 Percentage of admissions by crime category sentenced to probation supervision.  
 4 Revocations/Waivers has been removed as of May, 2005 and has been replaced with Waiver/Technical and Waiver/Pending  
 \* In the case of revocations due to new felony, the admission count may reflect the original commitment crime or the new felony, depending on the sentence length. The longer sentence length determines which crime is counted.  
 \*\* Based upon the number of persons sentenced to incarceration and those sentenced to probation supervision.  
 # 241 unprocessed custody admission records have been proportionally applied to the incarceration totals.



**DEPARTMENT OF PUBLIC SAFETY AND CORRECTIONS**  
**Summary of Adult Incarceration Releases 1994-2012**  
 (Based Upon Most Serious Commitment Crime)

1994	Total Releases	Avg. * Length of Sent. (Yrs.)	Avg.* Time Served (Yrs.)	Release Types				
				GTPS**	GT***	Fullterm	Parole****	Other*****
Violent Crimes	2305	9.5	4.6	71.0%	5.9%	2.1%	10.8%	10.2%
Property Crimes	3690	5.2	2.3	71.8%	0.2%	3.4%	12.6%	12.0%
Drug Crimes	3763	5.9	2.9	61.8%	0.1%	2.6%	22.8%	12.7%
All Others	879	4.9	2.3	75.9%	0.1%	1.9%	7.4%	14.7%
Grand Total	10637	6.4	3.0	68.4%	1.4%	2.7%	15.4%	12.1%

1995	Total Releases	Avg. * Length of Sent. (Yrs.)	Avg.* Time Served (Yrs.)	Release Types				
				GTPS**	GT***	Fullterm	Parole****	Other*****
Violent Crimes	2417	9.2	4.5	72.7%	3.6%	1.8%	12.2%	9.6%
Property Crimes	3827	4.8	2.3	70.4%	0.1%	3.5%	13.2%	12.8%
Drug Crimes	4296	5.5	2.8	62.9%	0.0%	2.7%	21.8%	12.6%
All Others	987	4.9	2.1	73.5%	0.1%	2.8%	6.4%	17.2%
Grand Total	11527	6.0	2.9	68.4%	0.8%	2.8%	15.6%	12.4%

1996	Total Releases	Avg.* Length of Sent. (Yrs.)	Avg.* Time Served (Yrs.)	Release Types				
				GTPS**	GT***	Fullterm	Parole****	Other*****
Violent Crimes	2480	9.0	4.8	75.4%	2.9%	2.5%	7.2%	10.8%
Property Crimes	3742	4.9	2.8	71.6%	0.2%	3.4%	10.5%	11.7%
Drug Crimes	4582	5.3	2.7	65.6%	0.0%	3.6%	18.9%	10.0%
All Others	1033	4.1	2.0	70.5%	0.1%	2.0%	6.8%	20.7%
Grand Total	11837	5.8	3.1	70.0%	0.7%	3.2%	12.7%	11.6%

\* Offenders may have multiple convictions at the time of commitment; this data represents cumulative sentences at time for all convictions. Life & death sentences are computed as 99 yrs. for sentence averages. This is average sentence length only of those released and does not include inmates remaining in prison.

\*\* Goodtime/parole supervision (diminution of sentence).

\*\*\* Goodtime; inmates sentenced prior to 1972.

\*\*\*\* Represents Parole Board actions.

\*\*\*\*\* Includes conviction overturns, court orders, death, and release to probation on a split sentence.

**DEPARTMENT OF PUBLIC SAFETY AND CORRECTIONS**  
**Summary of Adult Incarceration Releases 1994-2012**  
 (Based Upon Most Serious Commitment Crime)

1997	Total Releases	Avg. * Length of Sent. (Yrs.)	Avg.* Time Served (Yrs.)	Release Types				
				GTPS**	GT***	Fullterm	Parole****	Other*****
Violent Crimes	2756	7.7	2.9	89.5%	1.4%	2.8%	3.6%	2.8%
Property Crimes	3999	4.4	1.3	88.6%	0.1%	3.9%	6.3%	1.1%
Drug Crimes	4671	4.8	1.6	82.5%	0.0%	4.5%	11.6%	1.3%
All Others	1069	3.7	1.1	90.9%	0.1%	3.2%	4.5%	1.3%
Grand Total	12495	5.2	1.7	86.7%	0.3%	3.8%	7.5%	1.6%

1998	Total Releases	Avg. * Length of Sent. (Yrs.)	Avg.* Time Served (Yrs.)	Release Types				
				GTPS**	GT***	Fullterm	Parole****	Other*****
Violent Crimes	2757	7.5	3.1	88.0%	1.9%	4.0%	3.0%	3.1%
Property Crimes	4185	4.0	1.3	88.7%	0.0%	4.4%	5.8%	1.0%
Drug Crimes	5086	4.4	1.6	83.4%	0.0%	4.9%	10.7%	1.0%
All Others	1220	3.5	1.0	90.8%	0.0%	3.4%	3.7%	2.1%
Grand Total	13248	4.8	1.8	86.7%	0.4%	4.4%	6.9%	1.5%

1999	Total Releases	Avg. * Length of Sent. (Yrs.)	Avg.* Time Served (Yrs.)	Release Types				
				GTPS**	GT***	Fullterm	Parole****	Other*****
Violent Crimes	2808	7.2	3.3	86.6%	1.2%	5.7%	3.2%	3.3%
Property Crimes	4457	3.7	1.4	88.0%	0.1%	4.4%	6.6%	0.9%
Drug Crimes	5683	4.3	1.6	81.4%	0.0%	5.2%	12.3%	1.1%
All Others	1403	3.1	1.1	92.1%	0.1%	3.8%	1.9%	2.2%
Grand Total	14351	4.6	1.8	85.5%	0.3%	4.9%	7.7%	1.6%

\* Offenders may have multiple convictions at the time of commitment; this data represents cumulative sentences at time for all convictions. Life & death sentences are computed as 99 yrs. for sentence averages. This is average sentence length only of those released and does not include inmates remaining in prison.

\*\* Goodtime/parole supervision (diminution of sentence).

\*\*\* Goodtime; inmates sentenced prior to 1972.

\*\*\*\* Represents Parole Board actions.

\*\*\*\*\* Includes conviction overturns, court orders, death, and release to probation on a split sentence.

**DEPARTMENT OF PUBLIC SAFETY AND CORRECTIONS**  
**Summary of Adult Incarceration Releases 1994-2012**  
 (Based Upon Most Serious Commitment Crime)

2000	Total Releases	Avg. * Length of Sent. (Yrs.)	Avg.* Time Served (Yrs.)	Release Types				
				GTPS**	GT***	Fullterm	Parole****	Other*****
Violent Crimes	2681	7.2	3.3	86.4%	0.9%	6.9%	2.5%	3.4%
Property Crimes	4281	3.7	1.5	85.9%	0.0%	6.2%	6.9%	1.0%
Drug Crimes	6141	4.2	1.7	80.9%	0.0%	6.3%	11.5%	1.2%
All Others	1460	3.2	1.1	89.5%	0.1%	5.0%	3.3%	2.2%
Grand Total	14563	4.5	1.9	84.3%	0.2%	6.3%	7.7%	1.6%

2001	Total Releases	Avg. * Length of Sent. (Yrs.)	Avg.* Time Served (Yrs.)	Release Types				
				GTPS**	GT***	Fullterm	Parole****	Other*****
Violent Crimes	2928	8.0	3.6	83.7%	1.1%	8.8%	3.0%	3.3%
Property Crimes	5059	4.4	1.6	83.9%	0.0%	6.0%	8.9%	1.2%
Drug Crimes	5251	4.4	1.7	77.2%	0.0%	7.0%	14.6%	1.3%
All Others	1530	3.7	1.3	83.7%	0.0%	8.0%	4.0%	4.2%
Grand Total	14768	5.0	2.0	81.5%	0.2%	7.1%	9.3%	2.0%

2002	Total Releases	Avg. * Length of Sent. (Yrs.)	Avg.* Time Served (Yrs.)	Release Types				
				GTPS**	GT***	Fullterm	Parole****	Other*****
Violent Crimes	2771	8.6	4.2	82.5%	1.3%	8.8%	3.6%	3.7%
Property Crimes	5220	4.4	1.7	82.0%	0.0%	5.5%	11.1%	1.4%
Drug Crimes	5455	4.6	1.8	76.5%	0.0%	6.2%	15.9%	1.4%
All Others	1606	3.7	1.3	75.0%	0.0%	10.2%	4.6%	10.2%
Grand Total	15052	5.2	2.1	79.3%	0.3%	6.9%	10.8%	2.8%

\* Offenders may have multiple convictions at the time of commitment; this data represents cumulative sentences at time for all convictions. Life & death sentences are computed as 99 yrs. for sentence averages. This is average sentence length only of those released and does not include inmates remaining in prison.

\*\* Goodtime/parole supervision (diminution of sentence).

\*\*\* Goodtime; inmates sentenced prior to 1972.

\*\*\*\* Represents Parole Board actions.

\*\*\*\*\* Includes conviction overturns, court orders, death, and release to probation on a split sentence.

**DEPARTMENT OF PUBLIC SAFETY AND CORRECTIONS**  
**Summary of Adult Incarceration Releases 1994-2012**  
**DEPARTMENT OF PUBLIC SAFETY AND CORRECTIONS**

2003	Total Releases	Avg. * Length of Sent. (Yrs.)	Avg.* Time Served (Yrs.)	Release Types				
				GTPS**	GT***	Fullterm	Parole****	Other*****
Violent Crimes	2807	8.7	4.1	81.2%	1.4%	9.4%	3.9%	4.2%
Property Crimes	5286	4.3	1.7	83.2%	0.0%	5.6%	10.0%	1.2%
Drug Crimes	5742	4.2	1.7	76.6%	0.0%	6.7%	15.1%	1.6%
All Others	1509	3.7	1.3	71.4%	0.0%	10.3%	4.2%	14.0%
Grand Total	15344	5.0	2.1	79.2%	0.3%	7.2%	10.2%	3.1%

2004	Total Releases	Avg. * Length of Sent. (Yrs.)	Avg.* Time Served (Yrs.)	Release Types				
				GTPS**	GT***	Fullterm	Parole****	Other*****
Violent Crimes	2572	7.4	3.9	83.1%	0.6%	9.3%	2.2%	4.9%
Property Crimes	5421	3.9	1.6	84.6%	0.0%	4.7%	9.1%	1.6%
Drug Crimes	5964	4.2	1.7	79.5%	0.0%	6.1%	12.8%	1.7%
All Others	1443	3.4	1.3	72.7%	0.0%	10.3%	2.1%	14.9%
Grand Total	15400	4.5	2.0	81.3%	0.1%	6.5%	8.7%	3.4%

2005	Total Releases	Avg. * Length of Sent. (Yrs.)	Avg.* Time Served (Yrs.)	Release Types				
				GTPS**	GT***	Fullterm	Parole****	Other*****
Violent Crimes	2642	7.5	4.2	82.0%	1.0%	10.1%	2.6%	4.4%
Property Crimes	5524	3.7	1.7	84.7%	0.0%	4.7%	9.1%	1.5%
Drug Crimes	5824	4.0	1.7	82.9%	0.0%	4.8%	10.9%	1.4%
All Others	1374	3.4	1.5	73.0%	0.0%	12.6%	2.3%	12.2%
Grand Total	15364	4.5	2.1	82.5%	0.2%	6.4%	8.1%	2.9%

\* Offenders may have multiple convictions at the time of commitment; this data represents cumulative sentences at time for all convictions. Life & death sentences are computed as 99 yrs. for sentence averages. This is average sentence length only of those released and does not include inmates remaining in prison.

\*\* Goodtime/parole supervision (diminution of sentence).

\*\*\* Goodtime; inmates sentenced prior to 1972.

\*\*\*\* Represents Parole Board actions.

\*\*\*\*\* Includes conviction overturns, court orders, death, and release to probation on a split sentence.

**DEPARTMENT OF PUBLIC SAFETY AND CORRECTIONS**  
**Summary of Adult Incarceration Releases 1994-2012**  
**DEPARTMENT OF PUBLIC SAFETY AND CORRECTIONS**

2006	Total Releases	Avg. * Length of Sent. (Yrs.)	Avg. * Time Served (Yrs.)	Release Types				
				GTPS**	GT***	Fullterm	Parole****	Other*****
Violent Crimes	2602	9.6	4.8	81.7%	0.7%	11.1%	2.2%	4.3%
Property Crimes	5448	4.7	1.7	85.9%	0.1%	4.3%	8.5%	1.4%
Drug Crimes	5672	4.9	1.7	81.6%	0.1%	5.2%	11.8%	1.4%
All Others	1236	4.1	1.4	76.3%	0.0%	12.9%	1.3%	9.5%
Grand Total	14958	5.5	2.2	82.7%	0.2%	6.5%	8.0%	2.6%

2007	Total Releases	Avg. * Length of Sent. (Yrs.)	Avg. * Time Served (Yrs.)	Release Types				
				GTPS**	GT***	Fullterm	Parole****	Other*****
Violent Crimes	2428	9.6	4.8	77.9%	0.9%	11.9%	4.5%	4.9%
Property Crimes	5525	4.5	1.7	84.4%	0.0%	4.7%	9.5%	1.3%
Drug Crimes	5627	4.8	1.7	81.9%	0.1%	4.6%	11.9%	1.5%
All Others	1295	3.8	1.4	74.4%	0.0%	13.1%	1.8%	10.8%
Grand Total	14875	5.3	2.2	81.5%	0.2%	6.6%	8.9%	2.8%

2008	Total Releases	Avg. * Length of Sent. (Yrs.)	Avg. * Time Served (Yrs.)	Release Types				
				GTPS**	GT***	Fullterm	Parole****	Other*****
Violent Crimes	2402	7.8	4.6	77.3%	0.8%	15.0%	1.6%	5.3%
Property Crimes	5374	4.5	1.7	87.9%	0.0%	5.0%	5.8%	1.4%
Drug Crimes	5870	4.6	1.7	86.8%	0.0%	4.0%	8.0%	1.2%
All Others	1386	4.1	1.6	72.7%	0.0%	14.8%	1.9%	10.7%
Grand Total	15032	5.0	2.1	84.4%	0.1%	7.1%	5.6%	2.8%

\* Offenders may have multiple convictions at the time of commitment; this data represents cumulative sentences at time for all convictions. Life & death sentences are computed as 99 yrs. for sentence averages. This is average sentence length only of those released and does not include inmates remaining in prison.

\*\* Goodtime/parole supervision (diminution of sentence).

\*\*\* Goodtime; inmates sentenced prior to 1972.

\*\*\*\* Represents Parole Board actions.

\*\*\*\*\* Includes conviction overturns, court orders, death, and release to probation on a split sentence.

**DEPARTMENT OF PUBLIC SAFETY AND CORRECTIONS**  
**Summary of Adult Incarceration Releases 1994-2012**  
**DEPARTMENT OF PUBLIC SAFETY AND CORRECTIONS**

2009	Total Releases	Avg. * Length of Sent. (Yrs.)	Avg. * Time Served (Yrs.)	Release Types				
				GTPS**	GT***	Fullterm	Parole****	Other*****
Violent Crimes	2369	7.7	4.8	78.6%	0.6%	14.9%	0.6%	5.3%
Property Crimes	5423	4.0	1.7	89.2%	0.0%	5.3%	4.2%	1.3%
Drug Crimes	5903	4.4	1.8	88.4%	0.0%	4.0%	6.0%	1.6%
All Others	1519	3.5	1.4	74.0%	0.0%	12.7%	1.3%	12.0%
Grand Total	15214	4.7	2.2	85.7%	0.1%	7.0%	4.0%	3.1%

2010	Total Releases	Avg. * Length of Sent. (Yrs.)	Avg. * Time Served (Yrs.)	Release Types				
				GTPS**	GT***	Fullterm	Parole****	Other*****
Violent Crimes	2634	7.8	4.8	78.7%	0.3%	14.2%	0.8%	6.0%
Property Crimes	6040	4.4	1.7	89.3%	0.0%	5.4%	3.9%	1.4%
Drug Crimes	6764	4.7	1.9	89.5%	0.0%	4.2%	5.0%	1.3%
All Others	1815	3.8	1.5	76.1%	0.0%	12.0%	1.0%	10.9%
Grand Total	17253	5.0	2.3	86.4%	0.1%	7.0%	3.5%	3.1%

2011	Total Releases	Avg. * Length of Sent. (Yrs.)	Avg. * Time Served (Yrs.)	Release Types				
				GTPS**	GT***	Fullterm	Parole****	Other*****
Violent Crimes	3018	8.0	4.6	76.7%	0.4%	13.7%	1.1%	4.9%
Property Crimes	6033	4.9	1.5	85.0%	0.0%	6.1%	3.5%	1.5%
Drug Crimes	6186	5.0	1.6	91.9%	0.0%	5.6%	5.0%	1.3%
All Others	1885	4.4	1.6	71.0%	0.0%	12.8%	1.3%	7.5%
Grand Total	17122	5.6	2.3	84.5%	0.1%	8.0%	3.4%	2.7%

\* Offenders may have multiple convictions at the time of commitment; this data represents cumulative sentences at time for all convictions. Life & death sentences are computed as 99 yrs. for sentence averages. This is average sentence length only of those released and does not include inmates remaining in prison.

\*\* Goodtime/parole supervision (diminution of sentence).

\*\*\* Goodtime; inmates sentenced prior to 1972.

\*\*\*\* Represents Parole Board actions.

\*\*\*\*\* Includes conviction overturns, court orders, death, and release to probation on a split sentence.

**DEPARTMENT OF PUBLIC SAFETY AND CORRECTIONS**  
**Summary of Adult Incarceration Releases 1994-2015**  
**DEPARTMENT OF PUBLIC SAFETY AND CORRECTIONS**

2012	Total Releases	Avg. * Length of Sent. (Yrs.)	Avg.* Time Served (Yrs.)	Release Types				
				GTPS**	GT***	Fullterm	Parole****	Other*****
Violent Crimes	2905	8.4	4.8	75.3%	0.2%	14.9%	3.1%	6.5%
Property Crimes	6021	4.6	1.6	86.1%	0.0%	6.7%	5.5%	1.7%
Drug Crimes	6207	5.0	1.8	86.8%	0.0%	5.2%	6.5%	1.5%
All Others	1887	4.2	1.5	78.7%	0.0%	13.6%	2.1%	5.6%
Grand Total	17020	5.5	2.4	83.7%	0.0%	8.3%	5.1%	2.9%

2013	Total Releases	Avg. * Length of Sent. (Yrs.)	Avg.* Time Served (Yrs.)	Release Types				
				GTPS**	GT***	Fullterm	Parole****	Other*****
Violent Crimes	3073	8.6	5.1	75.7%	0.3%	14.5%	3.2%	6.4%
Property Crimes	6313	4.6	1.7	89.0%	0.0%	5.8%	3.2%	2.0%
Drug Crimes	6293	5.1	1.8	89.1%	0.0%	4.4%	4.7%	1.8%
All Others	2011	4.0	1.5	76.8%	0.0%	14.3%	1.5%	7.4%
Grand Total	17690	5.6	2.5	85.3%	0.0%	7.8%	3.5%	3.3%

2014	Total Releases	Avg. * Length of Sent. (Yrs.)	Avg.* Time Served (Yrs.)	Release Types				
				GTPS**	GT***	Fullterm	Parole****	Other*****
Violent Crimes	3166	9.2	5.1	76.8%	0.1%	14.0%	3.5%	5.6%
Property Crimes	6169	4.8	1.6	92.6%	0.0%	3.2%	2.8%	1.4%
Drug Crimes	6262	5.0	1.7	91.9%	0.0%	3.0%	3.5%	1.6%
All Others	2375	4.2	1.5	74.3%	0.0%	17.9%	1.1%	6.7%
Grand Total	17972	5.8	2.3	87.1%	0.0%	7.0%	2.9%	2.9%

2015	Total Releases	Avg. * Length of Sent. (Yrs.)	Avg.* Time Served (Yrs.)	Release Types				
				GTPS**	GT***	Fullterm	Parole****	Other*****
Violent Crimes	3169	9.6	5.0	76.6%	0.2%	13.0%	4.1%	6.2%
Property Crimes	6160	4.7	1.4	94.3%	0.0%	2.5%	1.9%	1.3%
Drug Crimes	6135	5.2	1.6	93.5%	0.0%	2.2%	3.0%	1.4%
All Others	2370	4.6	1.5	76.6%	0.0%	15.7%	0.6%	7.0%
Grand Total	17834	5.7	2.1	88.5%	0.0%	6.0%	2.5%	2.9%

\* Offenders may have multiple convictions at the time of commitment; this data represents cumulative sentences a convictions. Life & death sentences are computed as 99 yrs. for sentence averages. This is average sentence length of those released and does not include inmates remaining in prison.

\*\* Goodtime/parole supervision (diminution of sentence).

\*\*\* Goodtime; inmates sentenced prior to 1972.

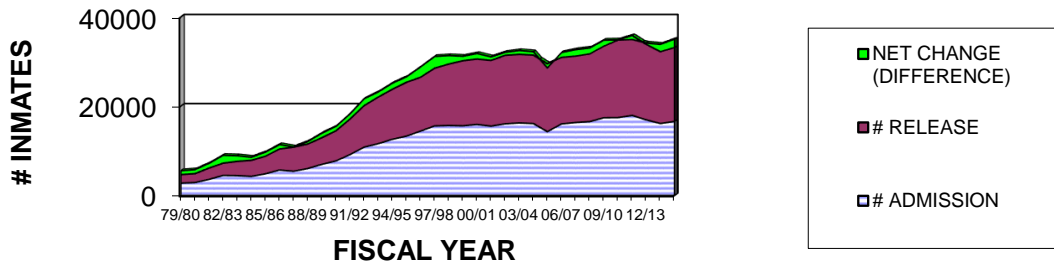
\*\*\*\* Represents Parole Board actions.

\*\*\*\*\* Includes conviction overturns, court orders, death, and release to probation on a split sentence.

## DEPARTMENT OF PUBLIC SAFETY AND CORRECTIONS ADMISSIONS/RELEASES COMPARISON FY 79/80 - CURRENT

FISCAL YEAR	# ADMISSION	% CHANGE	# RELEASE	% CHANGE	NET CHANGE (DIFFERENCE)
79/80	2771		1896		875
80/81	2887	4.19%	1987	4.80%	900
81/82	3596	24.56%	2531	27.38%	1065
82/83	4490	24.86%	2736	8.10%	1754
83/84	4444	-1.02%	3184	16.37%	1260
84/85	4272	-3.87%	3588	12.69%	684
85/86	4849	13.51%	3926	9.42%	923
86/87	5693	17.41%	4704	19.82%	989
87/88	5421	-4.78%	5395	14.69%	26
88/89	6033	11.29%	5474	1.46%	559
89/90	6965	15.45%	5957	8.82%	1008
90/91	7728	10.95%	6738	13.11%	990
91/92	9138	18.25%	7973	18.33%	1165
92/93	10819	18.40%	9284	16.44%	1535
93/94	11588	7.11%	10433	12.38%	1155
94/95	12568	8.46%	11200	7.35%	1368
95/96	13281	5.67%	12050	7.59%	1231
96/97	14395	8.39%	12070	0.17%	2325
97/98	15567	8.14%	12934	7.16%	2633
98/99	15663	0.62%	13764	6.42%	1899
99/00	15590	-0.47%	14576	5.90%	1014
00/01	15900	1.99%	14664	0.60%	1236
01/02	15519	-2.40%	14725	0.42%	794
02/03	16033	3.31%	15352	4.26%	681
03/04	16234	1.25%	15373	0.14%	861
04/05	16098	-0.84%	15343	-0.20%	755
05/06	14279	-11.30%	15197	-0.95%	-918
06/07	16011	12.13%	14913	-1.87%	1098
07/08	16334	2.02%	14879	-0.23%	1455
08/09	16525	1.17%	15198	2.14%	1327
09/10	17396	5.27%	16059	5.67%	1337
10/11	17428	0.18%	17384	8.25%	44
11/12	17913	2.78%	17020	-2.09%	893
12/13	16916	-5.57%	17231	1.24%	-315
13/14	16106	-4.79%	17752	3.02%	-1646
14/15	16572	2.89%	18450	3.93%	-1878
<b>TOTAL</b>	<b>423022</b>		<b>391940</b>		<b>31082</b>
<b>AVG</b>					<b>1069.37</b>

**ADMISSION RELEASE: FY 79/80 - 14/15**





## DEPARTMENT OF PUBLIC SAFETY AND CORRECTIONS ADMISSIONS/RELEASES COMPARISON CY 1994-Current

CALENDAR YEAR	# ADMISSION	% CHANGE	# RELEASE	% CHANGE	NET CHANGE (DIFFERENCE)
1994	12064		10637		1427
1995	12628	4.68%	11527	8.37%	1101
1996	13530	7.14%	11837	2.69%	1693
1997	15056	11.28%	12495	5.56%	2561
1998	15628	3.80%	13248	6.03%	2380
1999	15361	-1.71%	14351	8.33%	1010
2000	16046	4.46%	14580	1.60%	1466
2001	15573	-2.95%	14768	1.29%	805
2002	15548	-0.16%	15054	1.94%	494
2003	16133	3.76%	15296	1.61%	837
2004	16025	-0.67%	15401	0.69%	624
2005	15006	-6.36%	15365	-0.23%	-359
2006	15401	2.63%	14958	-2.65%	443
2007	16309	5.90%	14875	-0.55%	1434
2008	16295	-0.09%	15032	1.06%	1263
2009	17237	5.78%	15214	1.21%	2023
2010	17187	-0.29%	17295	13.68%	-108
2011	17511	1.89%	17018	-1.60%	493
2012	17552	0.23%	17122	0.61%	430
2013	17053	-2.84%	17690	3.32%	-637
2014	16543	-3.08%	17972	1.59%	-1429
2015	16424	-0.72%	17834	-0.77%	-1410
<b>TOTAL</b>	<b>346110</b>		<b>329569</b>		<b>16541</b>
<b>AVG</b>					<b>944.89</b>

### ADMISSION RELEASE: CY 1994 - 2015

