

**CORRECTIONS
POPULATION TRENDS
RAW DATA**

Y-Axis Label	State Facilities	Local Jail Facilities	Contract TWP	Non-Contract TWP	Total TWP	Local/Contract TWP	Total Custody	Difference
Jan-83	9342	1615					10,957	
F	9353	1687					11,040	83
M	9306	1843					11,149	109
A	9381	1949					11,330	181
May	9392	2107					11,499	169
J	9308	2334					11,642	143
Jul	9399	2432					11,831	189
A	9768	2225					11,993	162
Sep	10075	1935					12,010	17
O	10210	1958					12,168	158
N	10182	2066					12,248	80
D	10269	2174					12,443	195
Jan-84	10350	2124					12,474	31
F	10409	2025					12,434	-40
M	10435	2150					12,585	151
A	10411	2246					12,657	72
May	10423	2459					12,882	225
J	10457	2536					12,993	111
Jul	10298	2853					13,151	158
A	10319	2802					13,121	-30
Sep	10349	2753					13,102	-19
O	10375	2726					13,101	-1
N	10459	2774					13,233	132
D	10540	2659					13,199	-34
Jan-85	10632	2584					13,216	17
F	10706	2591					13,297	81
M	10734	2522					13,256	-41
A	10712	2574					13,286	30
May	10730	2464					13,194	-92
J	10738	2630					13,368	174
Jul	10746	2656					13,402	34
A	10819	2574					13,393	-9
Sep	10844	2602					13,446	53
O	10889	2649					13,538	92
N	10946	2740					13,686	148
D	10922	2677					13,599	-87
Jan-86	11027	2923					13,950	351
F	11055	2792					13,847	-103
M	11018	2918					13,936	89
A	11128	2918					14,046	110
May	11247	3118					14,365	319
J	11237	2979					14,216	-149
Jul	11198	3416					14,614	398
A	10918	3531					14,449	-165
Sep	10685	3721					14,406	-43
O	10668	3814					14,482	76
N	10919	3690					14,609	127
D	11160	3485					14,645	36

**CORRECTIONS
POPULATION TRENDS
RAW DATA**

Yr-Axis Label	State Facilities	Local Jail Facilities	Contract TWP	Non-Contract TWP	Total TWP	Local/Contract TWP	Total Custody	Difference
Jan-87	11280	3439					14,719	74
F	11442	3383					14,825	106
M	11570	3355					14,925	100
A	11707	3371					15,078	153
May	11765	3447					15,212	134
J	11792	3472					15,264	52
Jul	11723	3621					15,344	80
A	11604	3718					15,322	-22
Sep	11676	3627					15,303	-19
O	11697	3789					15,486	183
N	11703	3772					15,475	-11
D	11697	3760					15,457	-18
Jan-88	11339	3776					15,115	-342
F	11547	3712					15,259	144
M	11736	3547					15,283	24
A	11873	3585					15,458	175
May	12000	3562					15,562	104
J	12058	3512					15,570	8
Jul	12101	3581					15,682	112
A	12073	3621					15,694	12
Sep	12116	3722					15,838	144
O	12087	3868					15,955	117
N	12062	4011					16,073	118
D	12088	4125					16,213	140
Jan-89	12139	4110					16,249	36
F	12108	3811					15,919	-330
M	12152	3826					15,978	59
A	12168	3996					16,164	186
May	12183	4102					16,285	121
J	12256	4233					16,489	204
Jul	12253	4309					16,562	73
A	12439	4037					16,476	-86
Sep	12989	3791					16,780	304
O	13067	3893					16,960	180
N	13195	3977					17,172	212
D	13190	4078					17,268	96
Jan-90	13176	4153					17,329	61
F	13230	4295					17,525	196
M	13263	4362					17,625	100
A	13605	4154					17,759	134
May	13802	4194					17,996	237
J	13861	4305					18,166	170
Jul	13881	4466					18,347	181
A	13858	4494					18,352	5
Sep	13865	4588					18,453	101
O	13910	4710					18,620	167
N	14009	4689					18,698	78
D	14079	4720					18,799	101

**CORRECTIONS
POPULATION TRENDS
RAW DATA**

Y-Axis Label	State Facilities	Local Jail Facilities	Contract TWP	Non-Contract TWP	Total TWP	Local/Contract TWP	Total Custody	Difference
Jan-91	14298	4334					18,632	-167
F	14403	4319					18,722	90
M	14504	4264					18,768	46
A	14605	4247					18,852	84
May	14670	4270					18,940	88
J	14771	4281					19,052	112
Jul	14806	4326					19,132	80
A	14778	4431					19,209	77
Sep	14732	4585					19,317	108
O	14844	4857					19,701	384
N	14882	4976					19,858	157
D	14970	5047					20,017	159
Jan-92	14975	5011					19,986	-31
F	15036	5256					20,292	306
M	15063	5312					20,375	83
A	15112	5233					20,345	-30
May	15088	5369					20,457	112
J	15114	5454					20,568	111
Jul	15097	5351					20,448	-120
A	15270	5279					20,549	101
Sep	15486	5059					20,545	-4
O	15740	4952					20,692	147
N	15968	4975					20,943	251
D	16152	4855					21,007	64
Jan-93	16233	4663					20,896	-111
F	16383	4647					21,030	134
M	16502	4739					21,241	211
A	16385	5065					21,450	209
May	16362	5170					21,532	82
J	16459	5291					21,750	218
Jul	16464	5452					21,916	166
A	16288	5799					22,087	171
Sep	16075	6098					22,173	86
O	16144	6277					22,421	248
N	16181	6458					22,639	218
D	16141	6422					22,563	-76
Jan-94	16142	6390					22,532	-31
F	16197	6664					22,861	329
M	16229	6703					22,932	71
A	16283	6818					23,101	169
May	16300	6889					23,189	88
J	16224	7099					23,323	134
Jul	16241	7115					23,356	33
A	16281	7326					23,607	251
Sep	16132	7445					23,577	-30
O	16140	7766					23,906	329
N	16093	8038					24,131	225
D	16071	8149					24,220	89

**CORRECTIONS
POPULATION TRENDS
RAW DATA**

Yr-Axis Label	State Facilities	Local Jail Facilities	Contract TWP	Non-Contract TWP	Total TWP	Local/Contract TWP	Total Custody	Difference
Jan-95	16018	8081					24,099	-121
F	16225	8228					24,453	354
M	16203	8243					24,446	-7
A	16184	8318					24,502	56
May	16166	8604					24,770	268
J	16266	8601					24,867	97
Jul	16234	8770					25,004	137
A	16383	8751					25,134	130
Sep	16497	8741					25,238	104
O	16803	8799					25,602	364
N	16986	8683					25,669	67
D	17077	8600					25,677	8
Jan-96	16975	8472					25,447	-230
F	17246	8480					25,726	279
M	17407	8471					25,878	152
A	17539	8682					26,221	343
May	17470	8786					26,256	35
J	17535	8752					26,287	31
Jul	17516	8914					26,430	143
A	17532	8913					26,445	15
Sep	17553	8951					26,504	59
O	17600	9012					26,612	108
N	17630	9264					26,894	282
D	17635	9364					26,999	105
Jan-97	17597	9256					26,853	-146
F	17838	9243					27,081	228
M	17857	9587					27,444	363
A	17797	9984					27,781	337
May	17727	10305					28,032	251
J	17856	10353					28,209	177
Jul	18014	10540					28,554	345 **
A	18174	10677					28,851	297
Sep	18384	10702					29,086	235
O	18519	10763					29,282	196
N	18529	10868					29,397	115
D	18470	10795					29,265	-132
Jan-98	18559	10784					29,343	78
F	18554	11294					29,848	505
M	18565	11517					30,082	234
A	18606	11717					30,323	241
May	18616	11825					30,441	118
J	18679	12228					30,907	466
Jul	18705	12419					31,124	217
A	18819	12500					31,319	195
Sep	18880	12701					31,581	262
O	19001	12976					31,977	396 **
N	19004	13267					32,271	294 **
D	19016	13211					32,227	-44

**CORRECTIONS
POPULATION TRENDS
RAW DATA**

Y-Axis Label	State Facilities	Local Jail Facilities	Contract TWP	Non-Contract TWP	Total TWP	Local/Contract TWP	Total Custody	Difference
Jan-99	19053	13328					32,381	154
F	19226	13364					32,590	209
M	19259	13214					32,473	-117
A	19131	13748					32,879	406
May	19127	13897					33,024	145
J	19303	14080					33,383	359
Jul	19320	14099					33,419	36
A	19239	14170					33,409	-10
Sep	19278	14365					33,643	234
O	19281	14409					33,690	47
N	19190	14649					33,839	149
D	19174	14838					34,012	173
Jan-00	19292	14671					33,963	-49
F	19355	15145					34,500	537
M	19406	15300					34,706	206
A	19403	15158					34,561	-145
May	19462	15259					34,721	160
J	19463	15194					34,657	-64
Jul	19541	15027					34,568	-89
A	19443	15285					34,728	160
Sep	19450	15489					34,939	211
O	19440	15596					35,036	97
N	19515	15596					35,111	75
D	19450	15504					34,954	-157
Jan-01	19476	15397					34,873	-81
F	19651	15537					35,188	315
M	19611	15559					35,170	-18
A	19543	15742					35,285	115
May	19534	15776					35,310	25
J	19528	15901					35,429	119
Jul	19663	15670					35,333	-96
A	19603	15707					35,310	-23
Sep	19604	15825					35,429	119
O	19929	16063					35,992	563
N	19929	15995					35,924	-68
D	19949	15874					35,823	-101
Jan-02	19929	15705					35,634	-189
F	19994	15664					35,658	24
M	19964	15731					35,695	37
A	19964	15873					35,837	142
May	19919	16254					36,173	336
J	19999	16397					36,396	223
Jul	19907	16252					36,159	-237
A	19,911	16251					36,162	3
Sep	19911	16215					36,126	-36
O	19927	16145					36,072	-54
N	19830	15973					35,803	-269
D	19830	16048					35,878	75

**CORRECTIONS
POPULATION TRENDS
RAW DATA**

Yr-Axis Label	State Facilities	Local Jail Facilities	Contract TWP	Non-Contract TWP	Total TWP	Local/Contract TWP	Total Custody	Difference
Jan-03	19547	15927					35,474	-404
F	19587	16029					35,616	142
M	19601	16050					35,651	35
A	19593	16222					35,815	164
May	19639	16248					35,887	72
J	19575	16321					35,896	9
Jul	19509	16512					36,021	125
A	19504	16525					36,029	8 Updated using 9/2/03
Sep	19425	16782					36,207	178 Updated using 9/30/03
O	19405	16798					36,203	-4 Updated using 11/04/0
N	19403	16726					36,129	-74 Last Updated using 12
D	19318	16547					35,865	-264 Last Updated using 12
Jan-04	19326	16559					35,885	20 Last Updated using 02
F	19321	16569					35,890	5 Last Updated using 03
M	19393	16776					36,169	279 Last Updated using 03
A	19530	16886					36,416	247 Last Updated using 05
May	19457	17152					36,609	193 Last Updated using 06
J	19381	17147					36,528	-81 Last Updated using 06
Jul	19365	17110					36,475	-53 Last Updated using 07
A	19321	17265					36,586	111 Last Updated using 08
Sep	19400	17164					36,564	-22 Last Update using 09/2
O	19341	17409					36,750	186 Last Update using 10/2
N	19276	17422					36,698	-52 Last Update using 11/2
D	19265	17269					36,534	-164 Last Update using 12/2
Jan-05	19300	17066					36,366	-168 Last Update using 1/2
F	19439	17378					36,817	451 Last Update using 2/22
M	19569	17327					36,896	79 Last Update using 3/2
A	19435	17431					36,866	-30 Last Update using 4/27
May	19484	17708					37,192	326 Last Update using 6/1/
J	19591	17645					37,236	44 Last Update using 6/2
Jul	19589	17685					37,274	38 Last Update using 8/2/
A	25378	16819					42,197	4,923 Last Update using 8/3/0
Sep	25297	17953					43,250	1,053 Last Update using 9/27
O	23045	17558					40,603	-2,647 Last Update using 11/0
N	22065	17581					39,646	-957 Last Update using 11/2
D	21583	17456					39,039	-607 Last Update using 12/2
Jan-06	20501	17780					38,281	-758 Last Update using 1/2
F	20255	17609					37,864	-417 Last Update using 3/1/
M	20344	17327					37,671	-193 Last Update using 3/2
A	20113	16887					37,000	-671 Last Update using 4/2
May	20042	16525					36,567	-433 Last Update using 5/31
J	20341	16182					36,523	-44 Last Update using 6/2
Jul	20396	16112					36,508	-15 Last Update using 7/2
A	20554	16044					36,598	90 Last Update using 8/2
Sep	20636	16171					36,807	209 Last Update using 9/2
O	20799	16285					37,084	277 Last Update using 10/2
N	20852	16268					37,120	36 Last Update using 11/2
D	20815	15995					36,810	-310 Last Update using 12/2

**CORRECTIONS
POPULATION TRENDS
RAW DATA**

Y-Axis Label	State Facilities	Local Jail Facilities	Contract TWP	Non-Contract TWP	Total TWP	Local/Contract TWP	Total Custody	Difference
Jan-07	20580	15901					36,481	-329 Last Update using 1/30
F	20577	15942					36,519	38 Last Update using 2/27
M	20596	16066					36,662	143 Last Update using 3/27
A	20795	16093					36,888	226 Last Update using 4/24
May	20772	16097					36,869	-19 Last Update using 5/25
J	20869	16121					36,990	121 Last Update using 6/25
Jul	20790	16,335					37,125	135 Last Update using 7/31
A	20750	16625					37,375	250 Last Update using 7/31
Sep	20700	16665					37,365	-10 Last Update using 7/31
O	20600	17051					37,651	286 Last Update using 10/30
N	20632	17000					37,632	-19 Last Update using 11/2
D	20461	17035					37,496	-136 Last Update using 12/2
Jan-08	20507	17060				17,060	37,567	71 Last Update using 10/30
F	20535	17024				17,024	37,559	-8 Last Update using 11/2
M	20537	17360				17,360	37,897	338 Last Update using 12/2
A	20671	17168				17,168	37,839	-58 Last Update using 4/30
May	20644	17322				17,322	37,966	127 Last Update using 5/25
J	20929	17347				17,347	38,276	310 Last Update using 6/25
Jul	20782	17,455				17,455	38,237	-39 Last Update using 7/25
A	20887	17716				17,716	38,603	366 Last Update using 8/27
Sep	21673	17493				17,493	39,166	563 Last Update using 9/24
O	21,199	17604				17,604	38,803	-363 Last Updated using 10/30
N	20,997	17559				17,559	38,556	-247 Last Updated using 11/2
D	20,857	17371				17,371	38,228	-328 Last Updated using 12/2
Jan-09	19698	17565	1,111	2,197	3,308	18,676	38,374	146 Last Update using 1/25
F	19802	17683	1,110	2,262	3,372	18,793	38,595	221 Last Update using 2/25
M	19868	17988	1,123	2,339	3,462	19,111	38,979	384 Last Update using 3/25
A	19266	18298	1,161	2,771	3,932	19,459	38,725	-254
May	19252	18533	1,129	2,342	3,471	19,662	38,914	189
J	19301	18420	1,065	2,413	3,478	19,485	38,786	-128
Jul	19,187	18,723	1,099	2,388	3,487	19,822	39,009	223
A	19003	19,350	1,091	2,385	3,476	20,441	39,444	435
Sep	19,013	19,634	1,079	2,401	3,480	20,713	39,726	282
O	19,003	19,923	1,038	2,493	3,531	20,961	39,964	238
N	19,024	19,869	1,034	2,433	3,467	20,903	39,927	-37
D	18,896	19,891	993	2,286	3,279	20,884	39,780	-147
Jan-10	18,774	20,059	994	2,403	3,397	21,053	39,827	47
F	18,697	20,207	981	2,508	3,489	21,188	39,885	58
M	18,868	20,201	1,007	2,538	3,545	21,208	40,076	191
A	18,928	20,044	1,016	2,715	3,731	21,060	39,988	-88
May	18,863	20,122	995	2,604	3,599	21,117	39,980	-8
J	18,963	19,827	1,032	2,556	3,588	20,859	39,822	-158
Jul	18,973	19,651	1,055	2,526	3,581	20,706	39,679	-143
A	18,944	19,865	1,104	2,553	3,657	20,969	39,913	234
Sep	19,103	19,964	1,126	2,609	3,735	21,090	40,193	280
O	19,041	19,675	1,118	2,377	3,495	20,793	39,834	-359
N	19,070	19,410	1,138	2,355	3,493	20,548	39,618	-216
D	19,008	19,287	1,096	2,363	3,459	20,383	39,391	-227

**CORRECTIONS
POPULATION TRENDS
RAW DATA**

Y-Axis Label	State Facilities	Local Jail Facilities	Contract TWP	Non-Contract TWP	Total TWP	Local/Contract TWP	Total Custody	Difference
Jan-11	18,983	19,373	1,120	2,310	3,430	20,493	39,476	85
F	18,978	19,460	1,150	2,406	3,556	20,610	39,588	112
M	18,896	19,759	997	2,657	3,654	20,756	39,652	64
A	18,628	20,016	1,023	2,702	3,725	21,039	39,667	15
May	18,137	20,641	988	2,735	3,723	21,629	39,766	99
J	17,980	20,709	994	2,721	3,715	21,703	39,683	-83
Jul	18,269	20,335	1,006	2,618	3,624	21,341	39,610	-73
A	18,690	20,169	982	2,672	3,654	21,151	39,841	231
Sep	18,779	20,296	1,004	2,748	3,752	21,300	40,079	238
O	18,786	20,334	1,005	2,775	3,780	21,339	40,125	46
N	18,843	20,299	999	2,717	3,716	21,298	40,141	16
D	18,843	19,892	974	2,635	3,609	20,866	39,709	-432
Jan-12	18,825	20,014	989	2,445	3,434	21,003	39,828	119
F	18,818	20,314	976	2,634	3,610	21,290	40,108	280
M	18,765	20,684	971	2,661	3,632	21,655	40,420	312
A	18,732	20,630	959	2,512	3,471	21,589	40,321	-99
May	18,561	20,988	989	2,692	3,681	21,977	40,538	217
J	18,236	21,230	994	2,868	3,862	22,224	40,460	-78
Jul	18,124	21,257	1,005	2,795	3,800	22,262	40,386	-74
A	18,236	21,063	976	2,757	3,733	22,039	40,275	-111
Sep	18,271	21,289	1,008	2,866	3,874	22,297	40,568	293
O	18,194	21,317	1,008	2,607	3,615	22,325	40,519	-49
N	18,216	21,256	979	2,666	3,645	22,235	40,451	-68
D	18,599	20,624	947	2,582	3,529	21,571	40,170	-281
Jan-13	18,611	20,466	962	2,497	3,459	21,428	40,039	-131
F	18,687	20,446	963	2,654	3,617	21,409	40,096	57
M	18,671	20,413	941	2,649	3,590	21,354	40,025	-71
A	18,666	20,305	959	2,637	3,596	21,264	39,930	-95
May	18,604	20,409	928	2,781	3,709	21,337	39,941	11
J	18,703	20,315	908	2,878	3,786	21,223	39,926	-15
Jul	18,870	19,860	913	2,841	3,754	20,773	39,643	-283
A	18,828	19,854	977	2,824	3,801	20,831	39,659	16
Sep	18,894	19,867	995	2,870	3,865	20,862	39,756	97
O	18,837	19,833	1,022	2,831	3,853	20,855	39,692	-64
N	18,842	19,693	1,017	2,762	3,779	20,710	39,552	-140
D	18,913	19,393	993	2,669	3,662	20,386	39,299	-253
Jan-14	18,923	19,292	964	2,523	3,487	20,256	39,179	-120
F	18,992	19,431	955	2,603	3,558	20,386	39,378	199
M	18,802	19,499	977	2,540	3,517	20,476	39,278	-100
A	18,757	19,429	957	2,502	3,459	20,386	39,143	-135
May	18,753	19,531	950	2,555	3,505	20,481	39,234	91
J	18,763	19,366	933	2,519	3,452	20,299	39,062	-172
Jul	18,787	19,301	935	2,496	3,431	20,236	39,023	-39
A	18,774	19,475	963	2,575	3,538	20,438	39,212	189
Sep	18,778	19,491	942	2,585	3,527	20,433	39,211	-1
O	18,853	19,128	941	2,502	3,443	20,069	38,922	-289
N	18,900	18,911	926	2,409	3,335	19,837	38,737	-185
D	18,787	18,308	935	2,278	3,213	19,243	38,030	-707

**CORRECTIONS
POPULATION TRENDS
RAW DATA**

Y-Axis Label	State Facilities	Local Jail Facilities	Contract TWP	Non-Contract TWP	Total TWP	Local/Contract TWP	Total Custody	Difference
Jan-15	18,767	18,027	945	2,248	3,193	18,972	37,739	-291
F	18,611	17,874	988	2,236	3,224	18,862	37,473	-266
M	18,601	18,050	1,000	2,287	3,287	19,050	37,651	178
A	18,247	18,169	1,036	2,272	3,308	19,205	37,452	-199
May	18,296	18,086	1,019	2,198	3,217	19,105	37,401	-51
J	18,256	18,011	1,033	2,230	3,263	19,044	37,300	-101
Jul	18,091	17,794	1,054	2,198	3,252	18,848	36,939	-361
A	18,093	17,758	1,059	2,125	3,184	18,817	36,910	-29
Sep	18,157	17,653	1,064	2,243	3,307	18,717	36,874	-36
O	18,321	17,594	957	2,271	3,228	18,551	36,872	-2
N	18,425	17,069	1,101	2,062	3,163	18,170	36,595	-277
D	18,430	16,877	1,070	1,982	3,052	17,947	36,377	-218
Jan-16	18,496	16,973	1,064	1,997	3,061	18,037	36,533	156
F	18,474	16,977	1,053	1,921	2,974	18,030	36,504	-29
M	18,542	16,872	1,049	1,908	2,957	17,921	36,463	-41
A	18,622	16,605	1,027	1,856	2,883	17,632	36,254	-209
May	18,567	16,769	1,054	1,900	2,954	17,823	36,390	136
J	18,612	16,646	1,022	1,946	2,968	17,668	36,280	-110
Jul	15,314	19,743	1,065	1,835	2,900	20,808	36,122	-158
A	14,230	20,631	1,034	1,885	2,919	21,665	35,895	-227
Sep	14,988	20,238	969	1,969	2,938	21,207	36,195	300
O	15,095	20,220	1,020	1,922	2,942	21,240	36,335	140
N	15,174	19,875	1,008	1,881	2,889	20,883	36,057	-278
D	15,162	19,504	1,016	1,862	2,878	20,520	35,682	-375
Jan-17	15,191	19,549	962	1,885	2,847	20,511	35,702	20
F	15,188	20,108	1,000	1,900	2,900	21,108	36,296	594
M	15,188	20,136	1,000	1,900	2,900	21,136	36,324	29
A	15,188	20,216	1,000	1,900	2,900	21,216	36,404	80
May	15,188	20,288	1,000	1,900	2,900	21,288	36,476	72
J	15,188	20,220	1,000	1,900	2,900	21,220	36,408	-68
Jul	15,188	20,198	1,000	1,900	2,900	21,198	36,386	-22
A	15,188	20,177	1,000	1,900	2,900	21,177	36,365	-21
Sep	15,188	20,188	1,000	1,900	2,900	21,188	36,376	10
O	15,188	20,175	1,000	1,900	2,900	21,175	36,363	-13
N	15,188	20,159	1,000	1,900	2,900	21,159	36,347	-15
D	15,188	20,146	1,000	1,900	2,900	21,146	36,334	-13
Jan-18	15,524	19,812	1,000	1,900	2,900	20,812	36,336	2
F	15,524	19,837	1,000	1,900	2,900	20,837	36,361	25
M	15,524	19,815	1,000	1,900	2,900	20,815	36,339	-23
A	15,524	19,851	1,000	1,900	2,900	20,851	36,375	36
May	15,524	19,893	1,000	1,900	2,900	20,893	36,417	42
J	15,524	19,944	1,000	1,900	2,900	20,944	36,468	51
Jul	15,524	19,955	1,000	1,900	2,900	20,955	36,479	11
A	15,524	19,973	1,000	1,900	2,900	20,973	36,497	18
Sep	15,524	19,963	1,000	1,900	2,900	20,963	36,487	-10
O	15,524	20,031	1,000	1,900	2,900	21,031	36,555	68
N	15,524	20,124	1,000	1,900	2,900	21,124	36,648	93
D	15,524	20,196	1,000	1,900	2,900	21,196	36,720	72
Jan-19	15,524	20,276	1,000	1,900	2,900	21,276	36,800	79
F	15,524	20,316	1,000	1,900	2,900	21,316	36,840	40
M	15,524	20,257	1,000	1,900	2,900	21,257	36,781	-58
A	15,524	20,304	1,000	1,900	2,900	21,304	36,828	47
May	15,524	20,343	1,000	1,900	2,900	21,343	36,867	39
J	15,524	20,390	1,000	1,900	2,900	21,390	36,914	47
Jul	15,524	20,416	1,000	1,900	2,900	21,416	36,940	26
A	15,524	20,465	1,000	1,900	2,900	21,465	36,989	49
Sep	15,524	20,443	1,000	1,900	2,900	21,443	36,967	-22
O	15,524	20,461	1,000	1,900	2,900	21,461	36,985	17

highlighted line indicates where projections start

**CORRECTIONS
POPULATION TRENDS
RAW DATA**

Y-Axis Label	State Facilities	Local Jail Facilities	Contract TWP	Non-Contract TWP	Total TWP	Local/Contract TWP	Total Custody	Difference
N	15,524	20,484	1,000	1,900	2,900	21,484	37,008	23
D	15,524	20,520	1,000	1,900	2,900	21,520	37,044	36
Jan-20	15,524	20,534	1,000	1,900	2,900	21,534	37,058	14
F	15,524	20,559	1,000	1,900	2,900	21,559	37,083	24
M	15,524	20,498	1,000	1,900	2,900	21,498	37,022	-60
A	15,524	20,516	1,000	1,900	2,900	21,516	37,040	17
May	15,524	20,512	1,000	1,900	2,900	21,512	37,036	-3
J	15,524	20,527	1,000	1,900	2,900	21,527	37,051	15
Jul	15,524	20,530	1,000	1,900	2,900	21,530	37,054	3
A	15,524	20,527	1,000	1,900	2,900	21,527	37,051	-3
Sep	15,524	20,472	1,000	1,900	2,900	21,472	36,996	-55
O	15,524	20,488	1,000	1,900	2,900	21,488	37,012	16
N	15,524	20,492	1,000	1,900	2,900	21,492	37,016	4
D	15,524	20,506	1,000	1,900	2,900	21,506	37,030	14
Jan-21	15,524	20,539	1,000	1,900	2,900	21,539	37,063	33
F	15,524	20,560	1,000	1,900	2,900	21,560	37,084	21
M	15,524	20,471	1,000	1,900	2,900	21,471	36,995	-89
A	15,524	20,481	1,000	1,900	2,900	21,481	37,005	10
May	15,524	20,487	1,000	1,900	2,900	21,487	37,011	6
J	15,524	20,476	1,000	1,900	2,900	21,476	37,000	-11
Jul	15,524	20,465	1,000	1,900	2,900	21,465	36,989	-11
A	15,524	20,474	1,000	1,900	2,900	21,474	36,998	9
Sep	15,524	20,374	1,000	1,900	2,900	21,374	36,898	-100
O	15,524	20,393	1,000	1,900	2,900	21,393	36,917	18
N	15,524	20,379	1,000	1,900	2,900	21,379	36,903	-14
D	15,524	20,386	1,000	1,900	2,900	21,386	36,910	7
Jan-22	15,524	20,397	1,000	1,900	2,900	21,397	36,921	12
F	15,524	20,404	1,000	1,900	2,900	21,404	36,928	7
M	15,524	20,417	1,000	1,900	2,900	21,417	36,941	13
A	15,524	20,425	1,000	1,900	2,900	21,425	36,949	8
May	15,524	20,415	1,000	1,900	2,900	21,415	36,939	-10
J	15,524	20,424	1,000	1,900	2,900	21,424	36,948	9
Jul	15,524	20,429	1,000	1,900	2,900	21,429	36,953	5
A	15,524	20,417	1,000	1,900	2,900	21,417	36,941	-12
Sep	15,524	20,431	1,000	1,900	2,900	21,431	36,955	14
O	15,524	20,437	1,000	1,900	2,900	21,437	36,961	6
N	15,524	20,426	1,000	1,900	2,900	21,426	36,950	-11
D	15,524	20,428	1,000	1,900	2,900	21,428	36,952	2

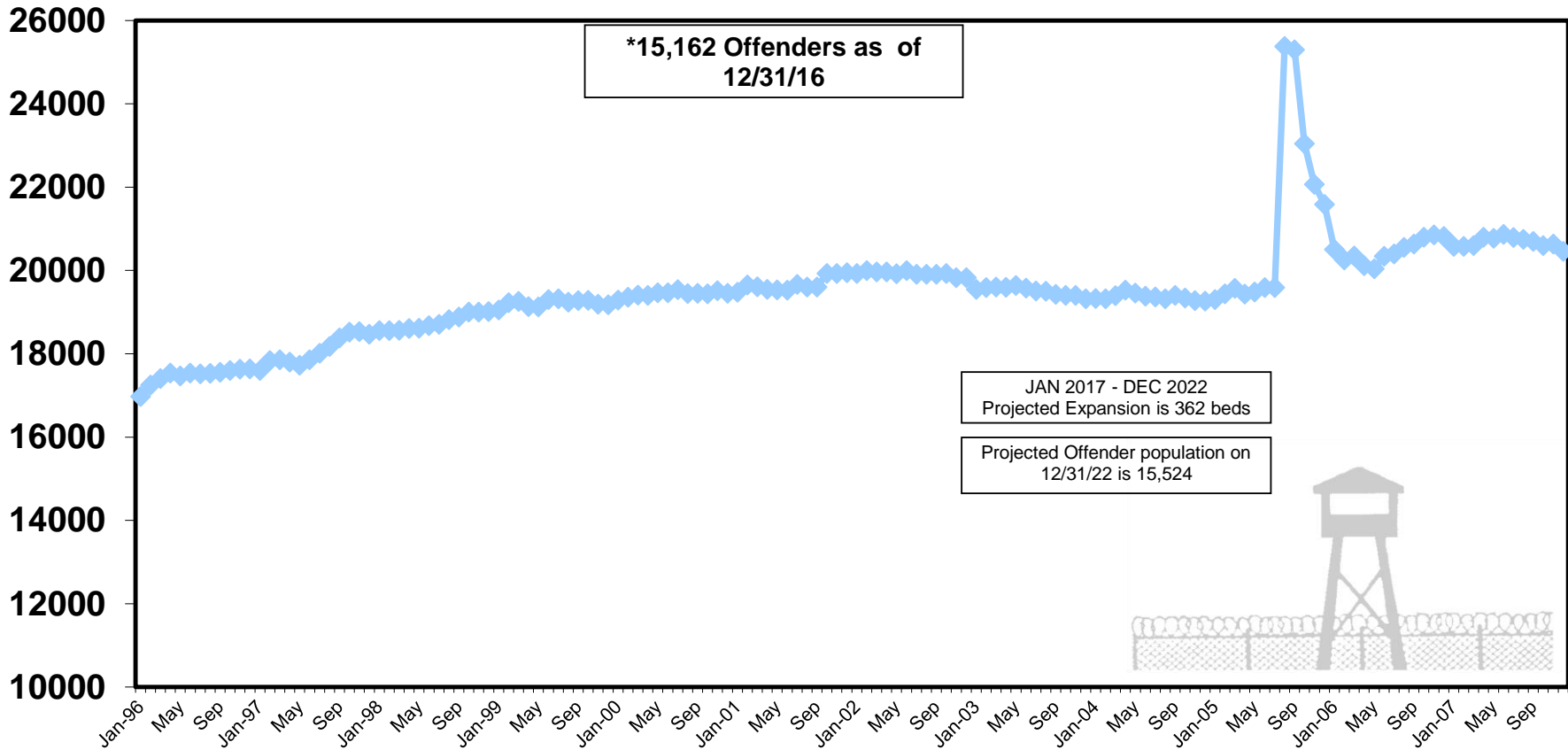
ACTUAL DATA DEPICTED THROUGH

12/28/2016

date of last

**DEPARTMENT OF PUBLIC SAFETY AND CORRECTIONS
POPULATION TRENDS
ADULT OFFENDERS IN STATE FACILITIES
January 1996- December 2007**

Offenders



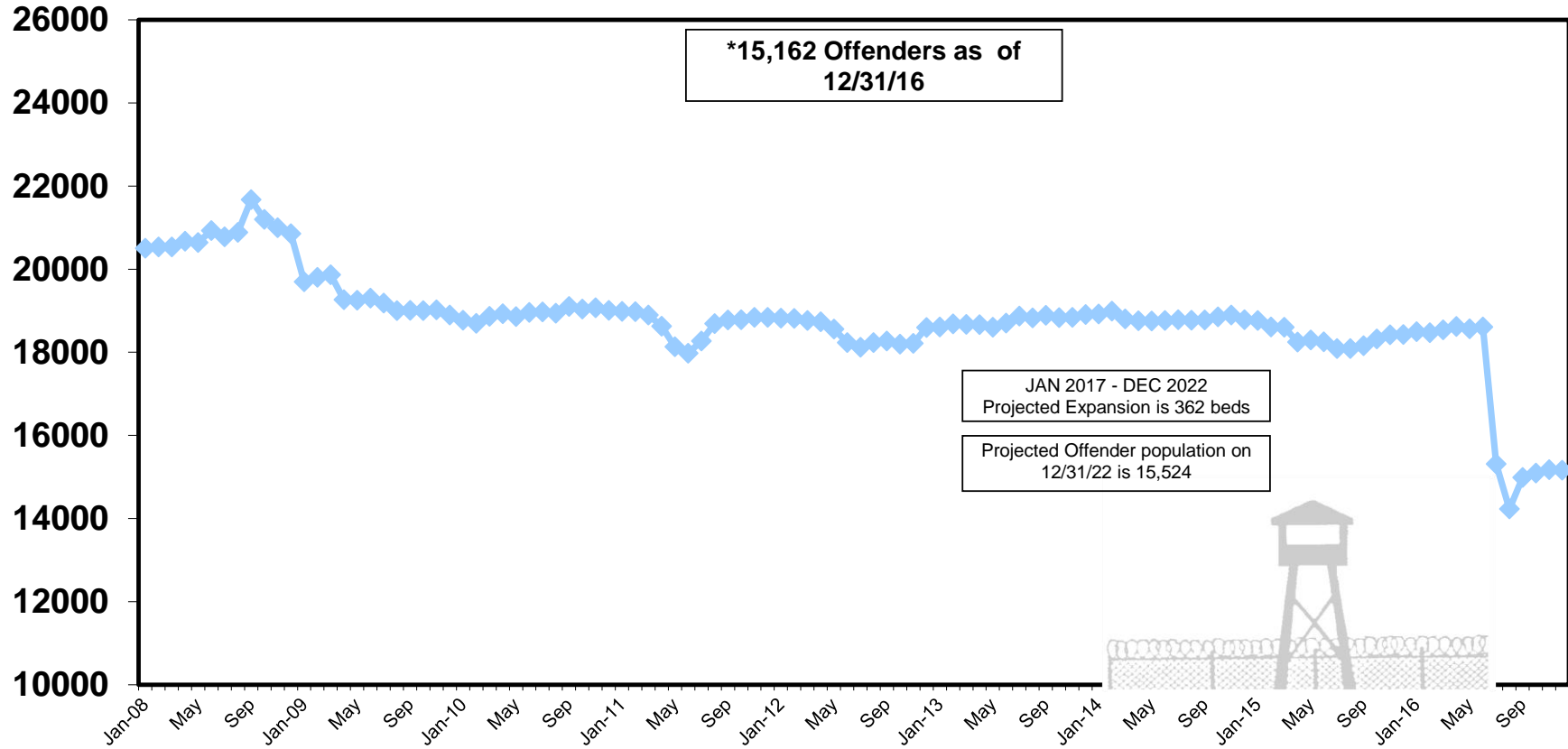
8/29/05 Hurricane Katrina occurred and Hurricane Rita occurred on 9/24/05, therefore parish jail evacuees were taken into DOC population.

* Effective 07/01/02, current state offender populations are based on assigned capacity from the Weekly Census plus the number of evacuees/other TOC located in state institutions

ACTUAL DATA DEPICTED THROUGH 12/31/2016

**DEPARTMENT OF PUBLIC SAFETY AND CORRECTIONS
POPULATION TRENDS
ADULT OFFENDERS IN STATE FACILITIES
January 2008- Present**

Offenders



07/01/16 Allen Correctional Center and Winn Correctional Center became classified as local facilities.

05/09/11 Threat of the flooding of the Mississippi River occurred, LSP offenders were evacuated to other state facilities, therefore intakes from parish prisons were suspended for 7 weeks.

Effective 1/1/09 Contract transitional work programs are separated out from State Facilities.

09/01/08 Hurricane Gustav occurred, therefore parish jail evacuees were taken into DOC population.

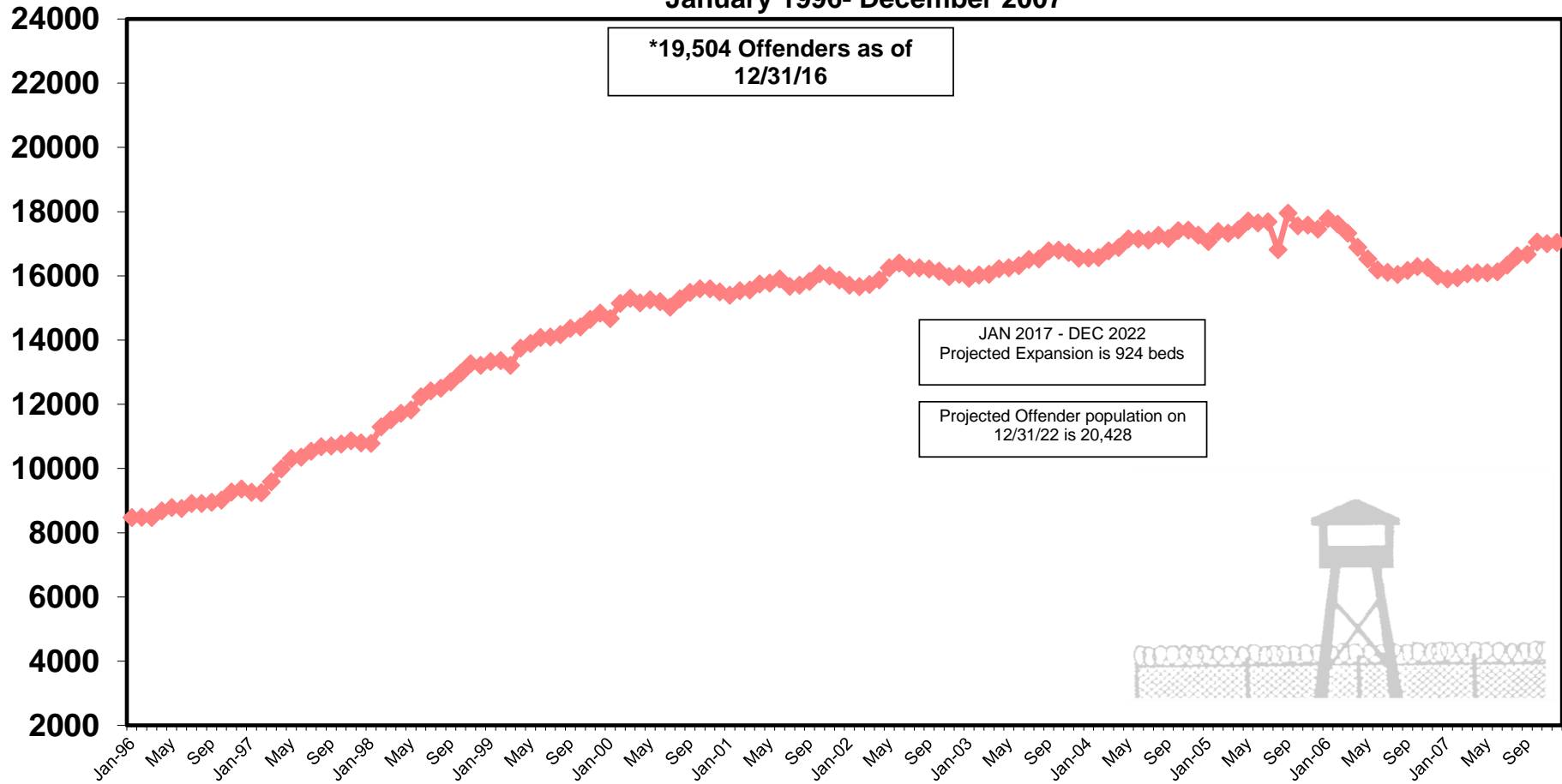
ACTUAL DATA DEPICTED THROUGH 12/31/2016

**DEPARTMENT OF PUBLIC SAFETY AND CORRECTIONS
POPULATION TRENDS**

ADULT OFFENDERS IN LOCAL JAIL FACILITIES (EXCLUDING CONTRACT TWP)

January 1996- December 2007

Offenders



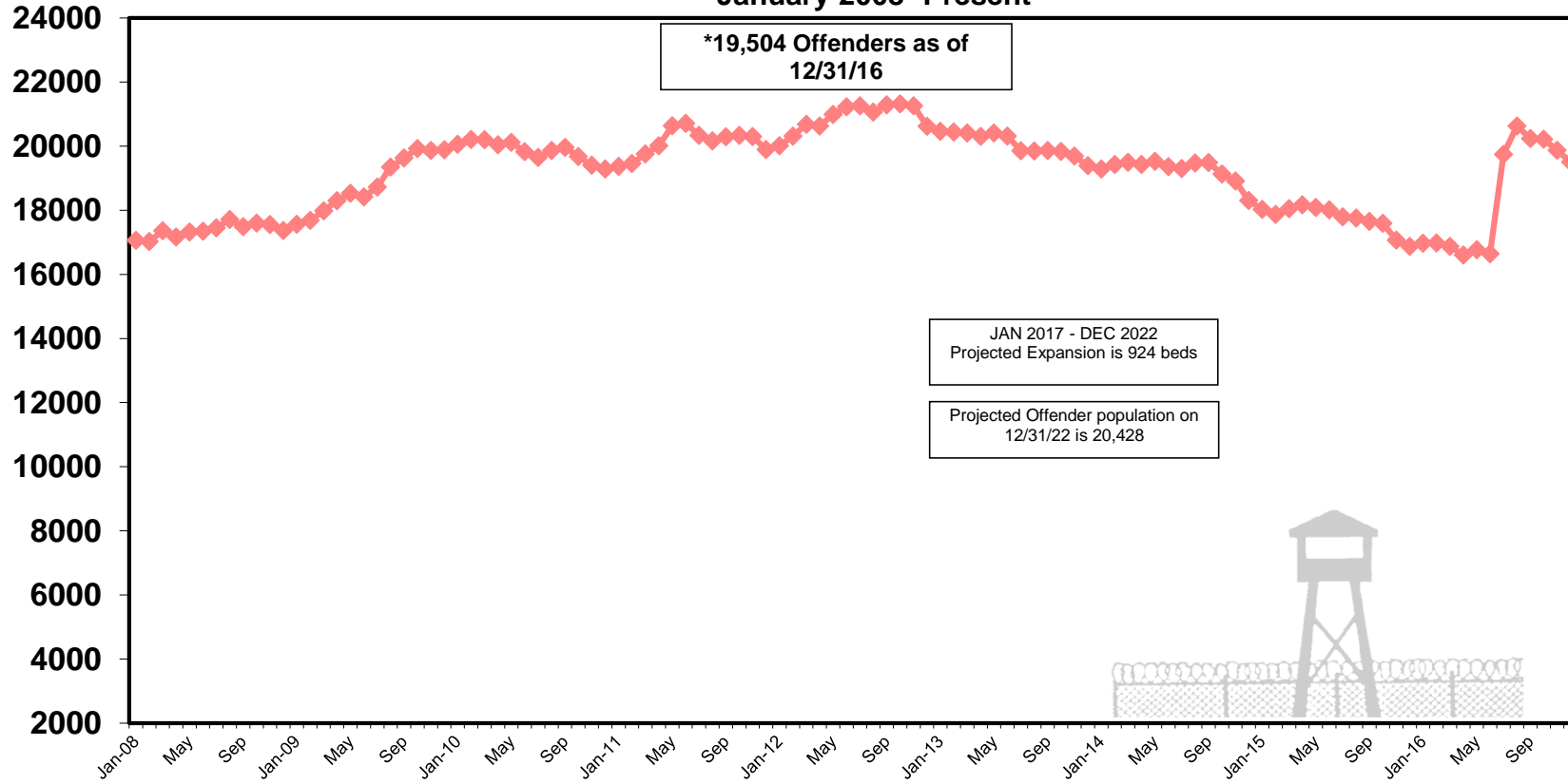
* Effective 8/30/05 current state offender populations based on operational capacity from Current State Offender Populations: Projected Expansions document plus the number of evacuees located in parish jails
8/29/05 Hurricane Katrina occurred and Hurricane Rita occurred on 9/24/05, therefore parish jail evacuees were taken into DOC population.

ACTUAL DATA DEPICTED THROUGH 12/31/2016

**DEPARTMENT OF PUBLIC SAFETY AND CORRECTIONS
POPULATION TRENDS**

**ADULT OFFENDERS IN LOCAL JAIL FACILITIES (EXCLUDING CONTRACT TWP)
January 2008- Present**

Offenders



7/1/2016 Allen Correctional Center and Winn Correctional Center became classified as local facilities

05/09/11 Threat of the flooding of the Mississippi River occurred, LSP offenders were evacuated to other state facilities, therefore intakes from parish prisons were suspended for 7 weeks.

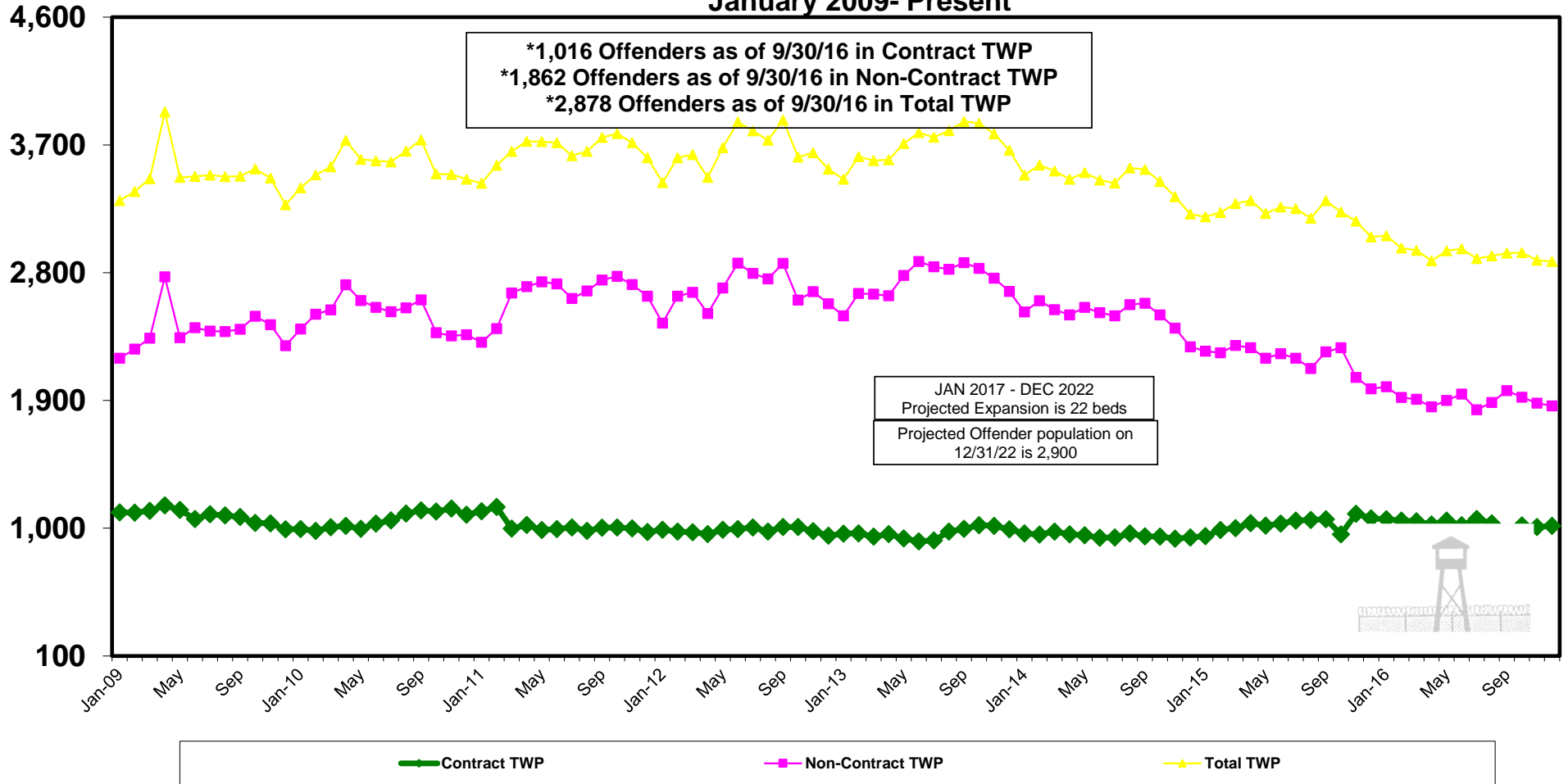
Effective 1/1/09 Contract transitional work programs are separated out from State Facilities.

09/01/08 Hurricane Gustav occurred, therefore parish jail evacuees were taken into DOC population.

ACTUAL DATA DEPICTED THROUGH 12/31/2016

**DEPARTMENT OF PUBLIC SAFETY AND CORRECTIONS
POPULATION TRENDS
ADULT OFFENDERS IN TRANSITIONAL WORK PROGRAMS
January 2009- Present**

Offenders

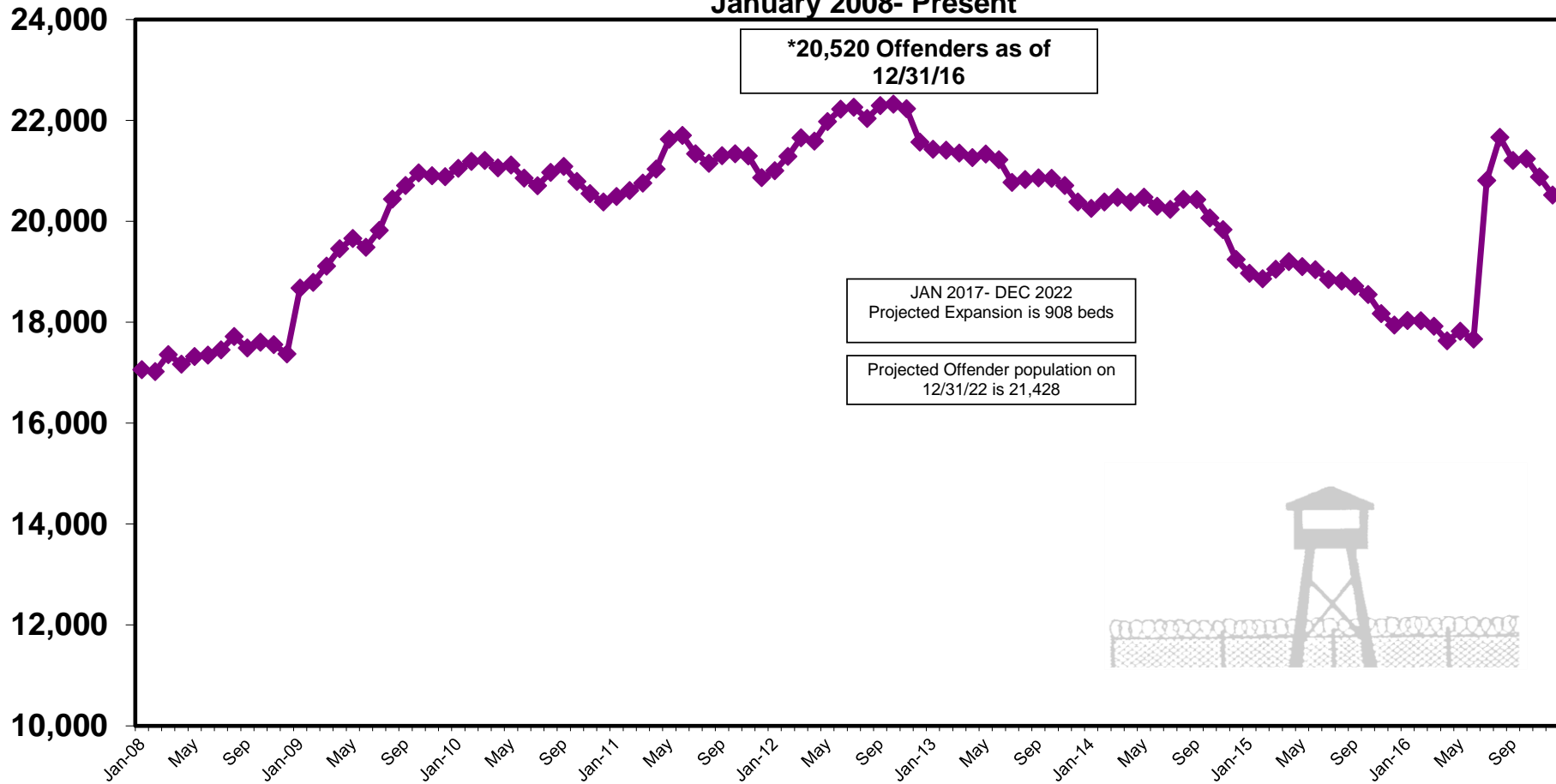


Effective 1/1/09 Contract transitional work programs are separated out from State Facilities.

ACTUAL DATA DEPICTED THROUGH 12/31/2016

**DEPARTMENT OF PUBLIC SAFETY AND CORRECTIONS
POPULATION TRENDS
ADULT OFFENDERS IN LOCAL FACILITIES (INCLUDING TWP)
January 2008- Present**

Offenders

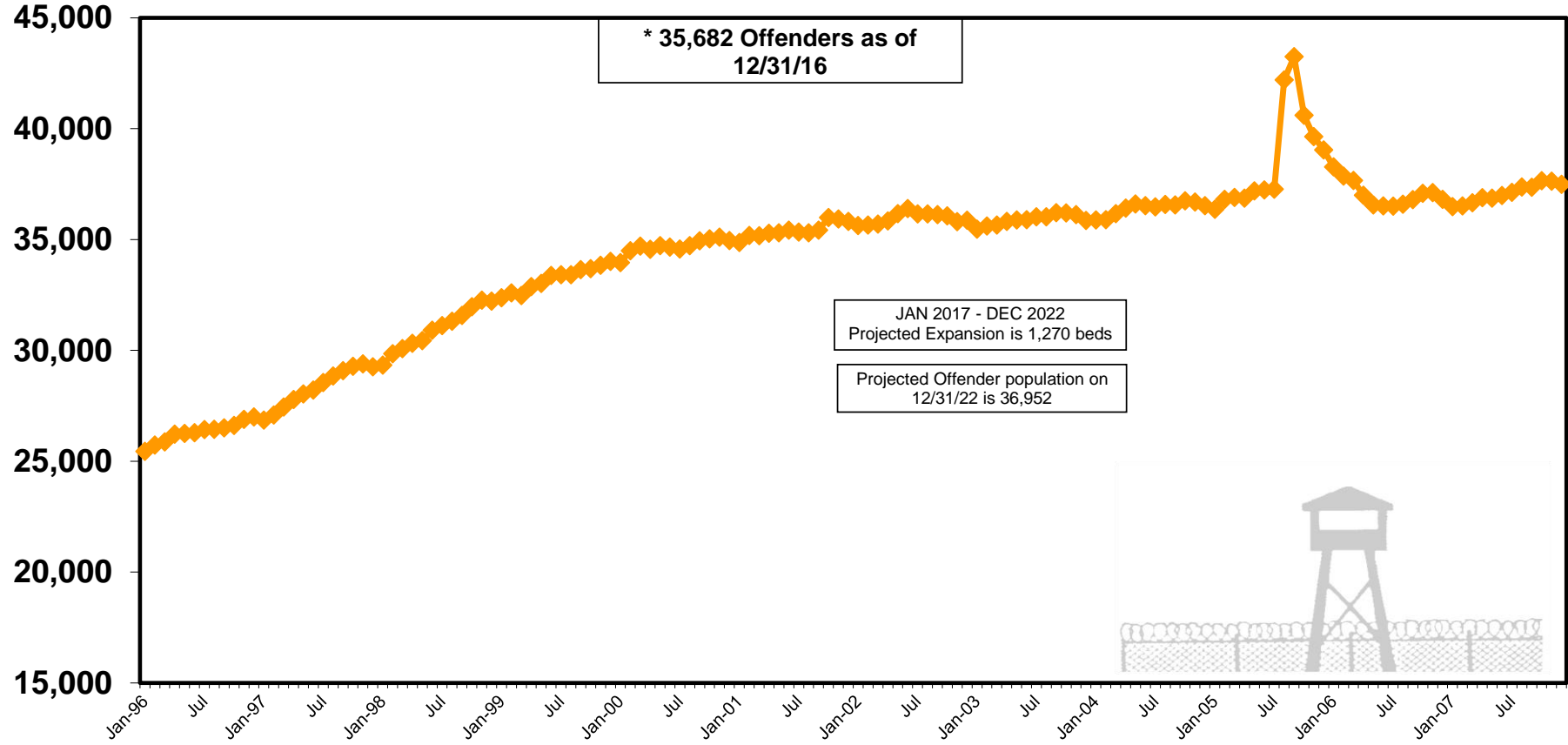


This number includes Transitional Work Programs beginning in 1/1/09.
Effective 1/1/09 Contract transitional work programs are separated out from State Facilities.

ACTUAL DATA DEPICTED THROUGH 12/31/2016

**DEPARTMENT OF PUBLIC SAFETY AND CORRECTIONS
POPULATION TRENDS
TOTAL ADULT OFFENDERS
January 1996- December 2007**

Offenders



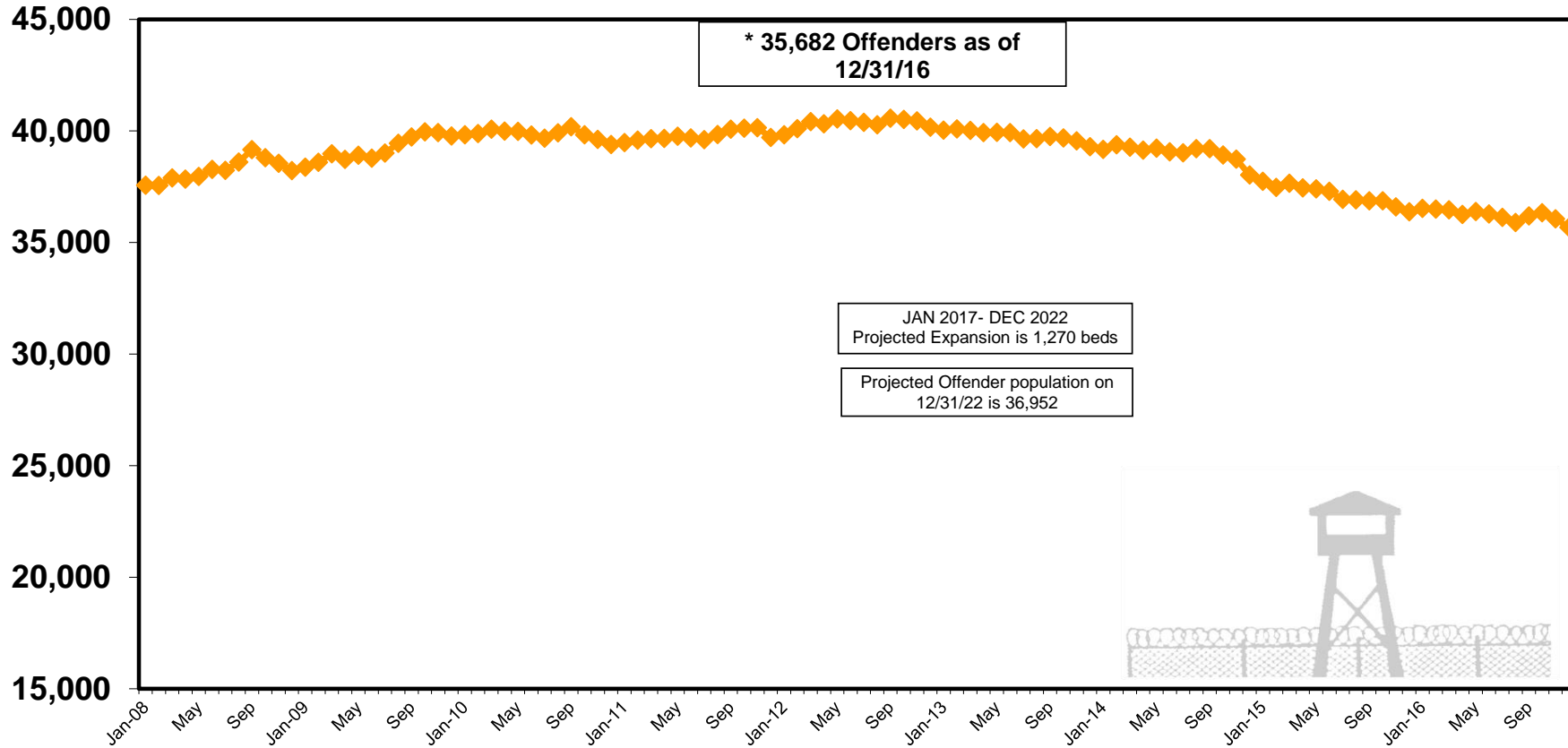
8/29/05 Hurricane Katrina occurred and Hurricane Rita occurred on 9/24/05, therefore parish jail evacuees were taken into DOC population.

* Effective 10/26/01 current state offender populations based on operational capacity from Current State Offender Populations: Projected Expansions document plus the number of evacuees located in state institutions and parish jails

ACTUAL DATA DEPICTED THROUGH 12/31/2016

**DEPARTMENT OF PUBLIC SAFETY AND CORRECTIONS
POPULATION TRENDS
TOTAL ADULT OFFENDERS
January 2008- Present**

Offenders



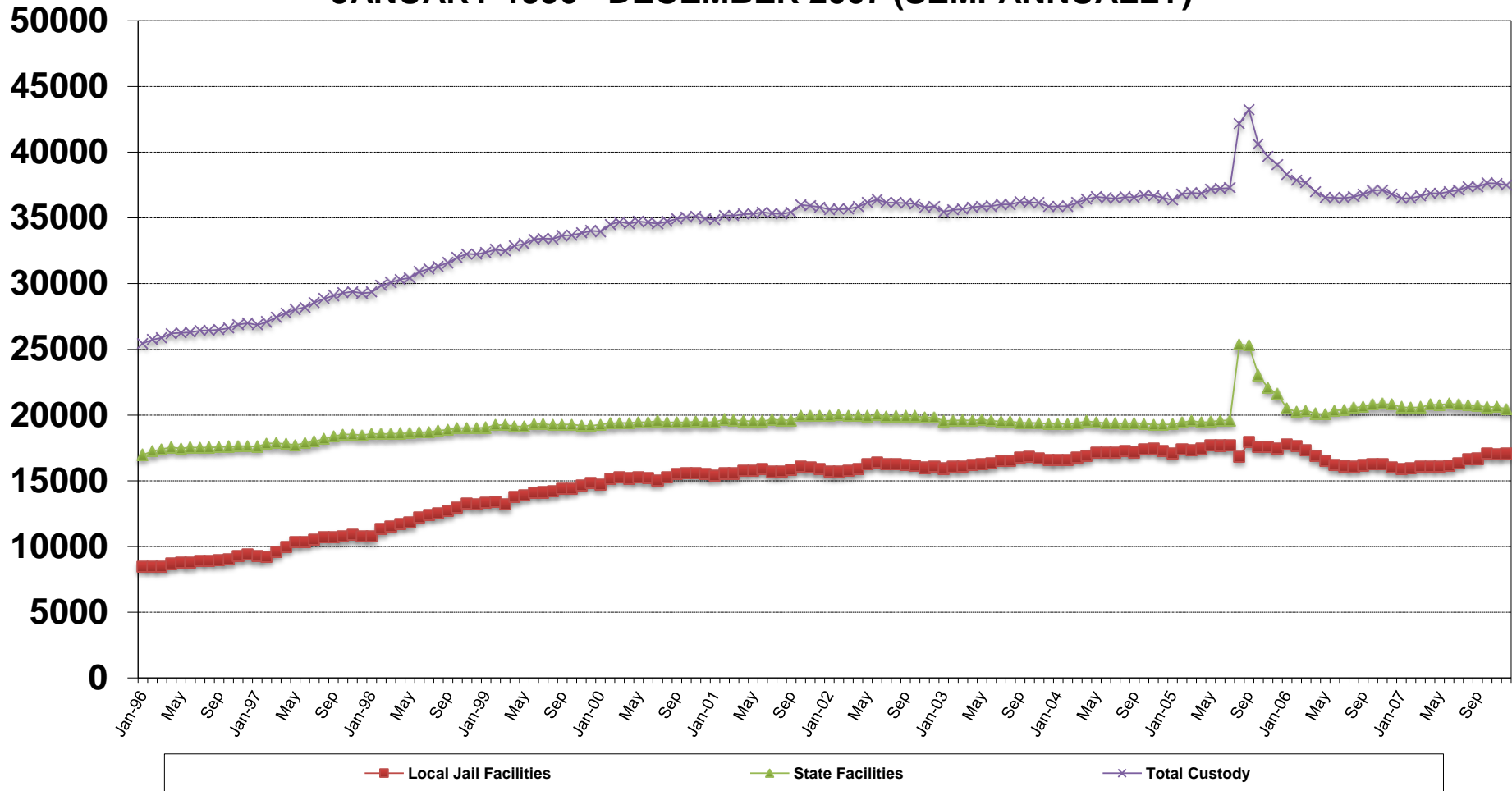
05/09/11 Threat of the flooding of the Mississippi River occurred, LSP offenders were evacuated to other state facilities, therefore intakes from parish prisons were suspended for 7 weeks.

09/01/08 Hurricane Gustav occurred, therefore parish jail evacuees were taken into DOC population.

ACTUAL DATA DEPICTED THROUGH 12/31/2016

DEPARTMENT OF PUBLIC SAFETY AND CORRECTIONS POPULATION TRENDS JANUARY 1996 - DECEMBER 2007 (SEMI-ANNUALLY)

Offenders

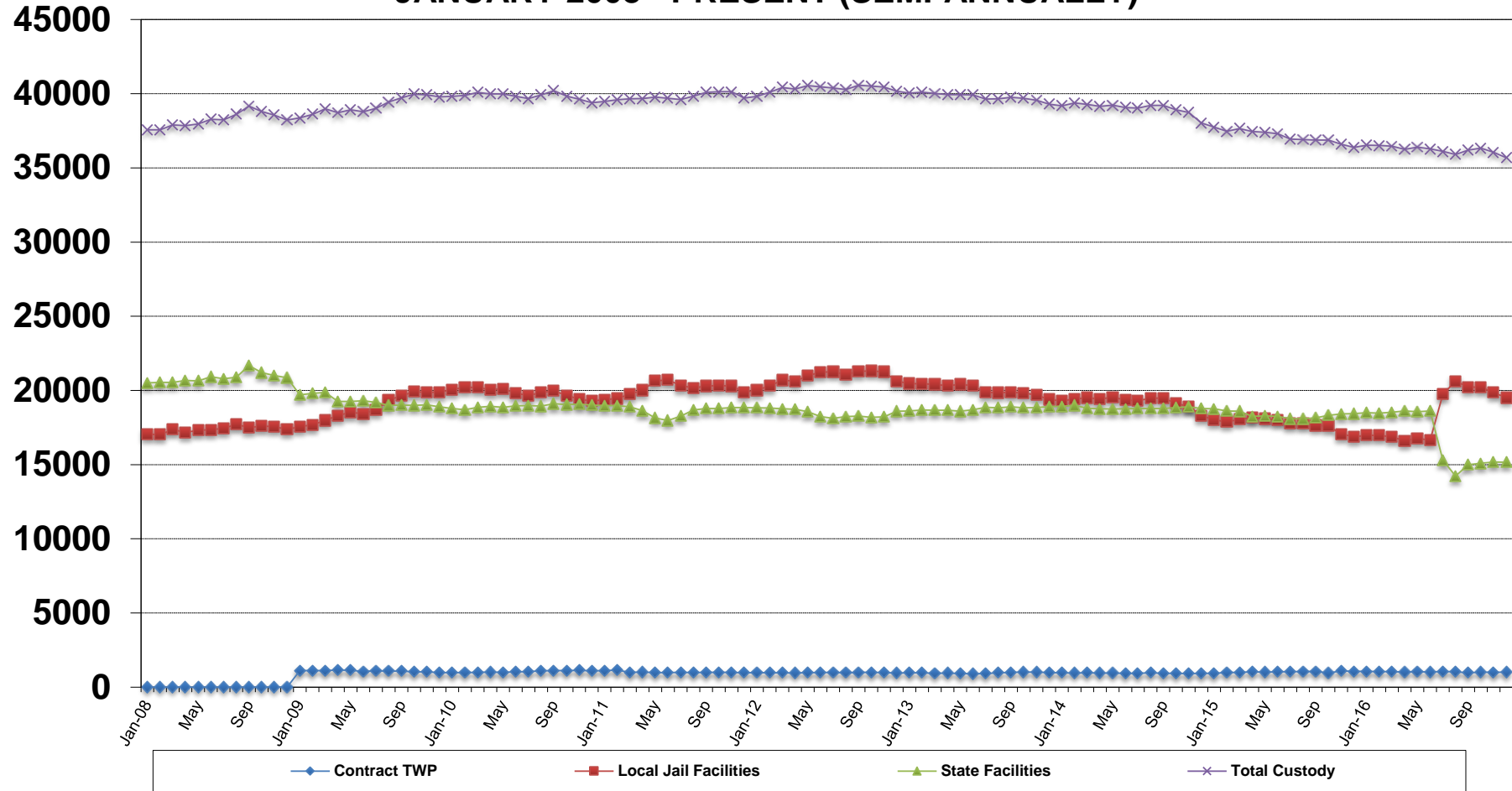


8/29/05 Hurricane Katrina occurred and Hurricane Rita occurred on 9/24/05, therefore parish jail evacuees were taken into DOC population.

* Effective 10/26/01 current state offender populations based on operational capacity from Current State Offender Populations: Projected Expansions document plus the number of evacuees located in state institutions and parish jail

DEPARTMENT OF PUBLIC SAFETY AND CORRECTIONS POPULATION TRENDS JANUARY 2008 - PRESENT (SEMI-ANNUALLY)

Offenders



07/01/16 Allen Correctional Center and Winn Correctional Center became classified as local facilities.

05/09/11 Threat of the flooding of the Mississippi River occurred, LSP offenders were evacuated to other state facilities, therefore intakes from parish prisons were suspended for 7 weeks.

09/01/08 Hurricane Gustav occurred, therefore parish jail evacuees were taken into DOC population.

DEPARTMENT OF PUBLIC SAFETY AND CORRECTIONS
POPULATION TRENDS - RAW DATA
1989 - 2015

YEAR	STATE FACILITIES	LOCAL FACILITIES	CONTRACT TWP	TOTAL CUSTODY POPULATION			Cause of Significant Change
1989	JAN	12139	4110	16249			
	FEB	12108	3811	15919	-330	-2.03%	
	MAR	12152	3826	15978	59	0.37%	
	APR	12168	3996	16164	186	1.16%	
	MAY	12183	4102	16285	121	0.75%	
	JUN	12256	4233	16489	204	1.25%	
	JUL	12253	4309	16562	73	0.44%	Avoyelles Corr. Opens
	AUG	12439	4037	16476	-86	-0.52%	
	SEP	12989	3791	16780	304	1.85%	
	OCT	13067	3893	16960	180	1.07%	
	NOV	13195	3977	17172	212	1.25%	
	DEC	13190	4078	17268	96	0.56%	
1990	JAN	13176	4153	17329	61	0.35%	
	FEB	13230	4295	17525	196	1.13%	
	MAR	13263	4362	17625	100	0.57%	Winn Corr. Opens
	APR	13605	4154	17759	134	0.76%	
	MAY	13802	4194	17996	237	1.33%	
	JUN	13861	4305	18166	170	0.94%	
	JUL	13881	4466	18347	181	1.00%	
	AUG	13858	4494	18352	5	0.03%	
	SEP	13865	4588	18453	101	0.55%	
	OCT	13910	4710	18620	167	0.91%	
	NOV	14009	4689	18698	78	0.42%	
	DEC	14079	4720	18799	101	0.54%	Allen Corr. Opens
1991	JAN	14298	4334	18632	-167	-0.89%	
	FEB	14403	4319	18722	90	0.48%	
	MAR	14504	4264	18768	46	0.25%	
	APR	14605	4247	18852	84	0.45%	
	MAY	14670	4270	18940	88	0.47%	
	JUN	14771	4281	19052	112	0.59%	
	JUL	14806	4326	19132	80	0.42%	Perdiem inc. to \$21/day
	AUG	14778	4431	19209	77	0.40%	
	SEP	14732	4585	19317	108	0.56%	
	OCT	14844	4857	19701	384	1.99%	
	NOV	14882	4976	19858	157	0.80%	
	DEC	14970	5047	20017	159	0.80%	
1992	JAN	14975	5011	19986	-31	-0.15%	
	FEB	15036	5256	20292	306	1.53%	
	MAR	15063	5312	20375	83	0.41%	
	APR	15112	5233	20345	-30	-0.15%	
	MAY	15088	5369	20457	112	0.55%	
	JUN	15114	5454	20568	111	0.54%	
	JUL	15097	5351	20448	-120	-0.58%	DOC begins prison expansion
	AUG	15270	5279	20549	101	0.49%	
	SEP	15486	5059	20545	-4	-0.02%	
	OCT	15740	4952	20692	147	0.72%	
	NOV	15968	4975	20943	251	1.21%	
	DEC	16152	4855	21007	64	0.31%	
1993	JAN	16233	4663	20896	-111	-0.53%	
	FEB	16383	4647	21030	134	0.64%	
	MAR	16502	4739	21241	211	1.00%	
	APR	16385	5065	21450	209	0.98%	
	MAY	16362	5170	21532	82	0.38%	
	JUN	16459	5291	21750	218	1.01%	
	JUL	16464	5452	21916	166	0.76%	
	AUG	16288	5799	22087	171	0.78%	LSP Camps A & H closed
	SEP	16075	6098	22173	86	0.39%	
	OCT	16144	6277	22421	248	1.12%	
	NOV	16181	6458	22639	218	0.97%	
	DEC	16141	6422	22563	-76	-0.34%	
1994	JAN	16142	6390	22532	-31	-0.14%	
	FEB	16197	6664	22861	329	1.46%	
	MAR	16229	6703	22932	71	0.31%	
	APR	16283	6818	23101	169	0.74%	
	MAY	16300	6889	23189	88	0.38%	
	JUN	16224	7099	23323	134	0.58%	
	JUL	16241	7115	23356	33	0.14%	
	AUG	16281	7326	23607	251	1.07%	
	SEP	16132	7445	23577	-30	-0.13%	
	OCT	16140	7766	23906	329	1.40%	
	NOV	16093	8038	24131	225	0.94%	
	DEC	16071	8149	24220	89	0.37%	

YEAR		STATE FACILITIES	LOCAL FACILITIES	CONTRACT TWP	TOTAL CUSTODY POPULATION			Cause of Significant Change
1995	JAN	16018	8081		24099	-121	-0.50%	ALC, AVC, WNC operational capacities inc. to 1474 ea.
	FEB	16225	8228		24453	354	1.47%	
	MAR	16203	8243		24446	-7	-0.03%	
	APR	16184	8318		24502	56	0.23%	
	MAY	16166	8604		24770	268	1.09%	
	JUN	16266	8601		24867	97	0.39%	
	JUL	16234	8770		25004	137	0.55%	
	AUG	16383	8751		25134	130	0.52%	
	SEP	16497	8741		25238	104	0.41%	
	OCT	16803	8799		25602	364	1.44%	
	NOV	16986	8683		25669	67	0.26%	
	DEC	17077	8600		25677	8	0.03%	
1996	JAN	16975	8472		25447	-230	-0.90%	
	FEB	17246	8480		25726	279	1.10%	
	MAR	17407	8471		25878	152	0.59%	
	APR	17539	8682		26221	343	1.33%	
	MAY	17470	8786		26256	35	0.13%	
	JUN	17535	8752		26287	31	0.12%	
	JUL	17516	8914		26430	143	0.54%	
	AUG	17532	8913		26445	15	0.06%	
	SEP	17553	8951		26504	59	0.22%	
	OCT	17600	9012		26612	108	0.41%	
	NOV	17630	9264		26894	282	1.06%	
	DEC	17635	9364		26999	105	0.39%	
1997	JAN	17597	9256		26853	-146	-0.54%	
	FEB	17838	9243		27081	228	0.85%	
	MAR	17857	9587		27444	363	1.34%	
	APR	17797	9984		27781	337	1.23%	
	MAY	17727	10305		28032	251	0.90%	
	JUN	17856	10353		28209	177	0.63%	
	JUL	18014	10540		28554	345	1.22%	
	AUG	18174	10677		28851	297	1.04%	
	SEP	18384	10702		29086	235	0.81%	
	OCT	18519	10763		29282	196	0.67%	
	NOV	18529	10868		29397	115	0.39%	
	DEC	18470	10795		29265	-132	-0.45%	
1998	JAN	18559	10784		29343	78	0.27%	
	FEB	18554	11294		29848	505	1.72%	
	MAR	18565	11517		30082	234	0.78%	
	APR	18606	11717		30323	241	0.80%	
	MAY	18616	11825		30441	118	0.39%	
	JUN	18679	12228		30907	466	1.53%	
	JUL	18705	12419		31124	217	0.70%	
	AUG	18819	12500		31319	195	0.63%	
	SEP	18880	12701		31581	262	0.84%	
	OCT	19001	12976		31977	396	1.25%	
	NOV	19004	13267		32271	294	0.92%	
	DEC	19016	13211		32227	-44	-0.14%	
1999	JAN	19053	13364		32417	190	0.59%	
	FEB	19072	13364		32436	19	0.06%	
	MAR	19259	13214		32473	37	0.11%	
	APR	19350	13380		32730	257	0.79%	
	MAY	19129	13897		33026	296	0.90%	
	JUN	19320	14099		33419	393	1.19%	
	JUL	19320	14099		33419	0	0.00%	
	AUG	19239	14170		33409	-10	-0.03%	
	SEP	19278	14365		33643	234	0.70%	
	OCT	19281	14409		33690	47	0.14%	
	NOV	19267	14649		33916	226	0.67%	
	DEC	19174	14838		34012	96	0.28%	
2000	JAN	19292	14671		33963	-49	-0.14%	
	FEB	19325	15081		34406	443	1.30%	
	MAR	19406	15300		34706	300	0.87%	
	APR	19403	15158		34561	-145	-0.42%	
	MAY	19259	15259		34518	-43	-0.12%	
	JUN	19510	15194		34704	186	0.54%	
	JUL	19541	15027		34568	-136	-0.39%	
	AUG	19443	15285		34728	160	0.46%	
	SEP	19478	15412		34890	162	0.47%	
	OCT	19440	15596		35036	146	0.42%	
	NOV	19515	15596		35111	75	0.21%	
	DEC	19450	15504		34954	-157	-0.45%	

YEAR		STATE FACILITIES	LOCAL FACILITIES	CONTRACT TWP	TOTAL CUSTODY POPULATION			Cause of Significant Change
2001	JAN	19476	15397		34873	-81	-0.23%	
	FEB	19651	15537		35188	315	0.90%	
	MAR	19611	15559		35170	-18	-0.05%	
	APR	19543	15742		35285	115	0.33%	
	MAY	19534	15776		35310	25	0.07%	
	JUN	19528	15901		35429	119	0.34%	
	JUL	19663	15670		35333	-96	-0.27%	
	AUG	19603	15707		35310	-23	-0.07%	
	SEP	19604	15825		35429	119	0.34%	
	OCT	19929	16063		35992	563	1.59%	
	NOV	19929	15995		35924	-68	-0.19%	
	DEC	19949	15874		35823	-101	-0.28%	
2002	JAN	19547	16114		35661	-162	-0.45%	
	FEB	19587	16063		35650	-11	-0.03%	
	MAR	19601	16138		35739	89	0.25%	
	APR	19593	16162		35755	16	0.04%	
	MAY	19593	16219		35812	57	0.16%	
	JUN	19593	16242		35835	23	0.06%	
	JUL	19907	16252		36159	324	0.90%	Beginning of George Washington University Projections
	AUG	19911	16251		36162	3	0.01%	
	SEP	19911	16215		36126	-36	-0.10%	
	OCT	19927	16145		36072	-54	-0.15%	
	NOV	19830	15973		35803	-269	-0.75%	
	DEC	19830	16048		35878	75	0.21%	
	2003	JAN	19547	15927		35474	-404	-1.13%
FEB		19587	16029		35616	142	0.40%	
MAR		19601	16050		35651	35	0.10%	
APR		19593	16222		35815	164	0.46%	
MAY		19639	16248		35887	72	0.20%	
JUN		19575	16321		35896	9	0.03%	
JUL		19509	16512		36021	125	0.35%	
AUG		19504	16525		36029	8	0.02%	
SEP		19425	16782		36207	178	0.49%	
OCT		19405	16798		36203	-4	-0.01%	
NOV		19403	16726		36129	-74	-0.20%	
DEC		19318	16547		35865	-264	-0.73%	
2004	JAN	19326	16559		35885	20	0.06%	Due to Hurricanes Katrina (8/29/05) and Rita(9/24/05), evacuees were taken into our population.
	FEB	19321	16569		35890	5	0.01%	Aug '05: Of the 25,378 in state facilities, 3,814 are Pre-trial Non-state offenders/arrestees
	MAR	19393	16776		36169	279	0.78%	Aug '05: Of the 16,819 in local facilities, 1309 are Pre-trial Non-state offenders/arrestees
	APR	19530	16886		36416	247	0.68%	Sep '05: Of the 25,437 in state facilities, 920 are physically located in Bureau of Prisons in Florida; 4,298 are Pre-trial Non-state offenders/arrestees
	MAY	19457	17152		36609	193	0.53%	Sep '05: Of the 17,953 in local facilities, 1,655 are Pre-trial Non-state offenders/arrestees
	JUN	19381	17147		36528	-81	-0.22%	Oct '05: Of the 23,045 in state facilities, 777 are physically located in Bureau of Prisons in Florida; 2,771 are Pre-trial Non-state offenders/arrestees
	JUL	19365	17110		36475	-53	-0.15%	
	AUG	19321	17265		36586	111	0.30%	Oct '05: Of the 17,558 in local facilities, 1,396 are Pre-trial Non-state offenders/arrestees
	SEP	19400	17164		36564	-22	-0.06%	Nov '05: Of the 22,065 in state facilities, 579 are physically located in Bureau of Prisons in Florida 2,084 are Pre-trial Non-state offenders/arrestees
	OCT	19341	17409		36750	186	0.51%	Nov '05: Of the 17,581 in local facilities, 1,474 are Pre-trial Non-state offenders/arrestees
	NOV	19276	17422		36698	-52	-0.14%	Dec '05: Of the 21,583 in state facilities, 529 are physically located in Bureau of Prisons in Florida 1,682 are Pre-trial Non-state offenders/arrestees
	DEC	19265	17269		36534	-164	-0.45%	Dec '05: Of the 17,456 in local facilities, 1,422 are Pre-trial Non-state offenders/arrestees
2005	JAN	19300	17066		36366	-168	-0.46%	Jan '06: Of the 20,501 in state facilities, 289 are physically located in Bureau of Prisons in Florida 703 are Pre-trial Non-state offenders/arrestees
	FEB	19439	17378		36817	451	1.24%	Jan '06: Of the 17,780 in local facilities, 1,838 are Pre-trial Non-state offenders/arrestees
	MAR	19569	17327		36896	79	0.21%	Feb '06: Of the 20,255 in state facilities, 532 are Pre-trial Non-state offenders/arrestees
	APR	19435	17431		36866	-30	-0.08%	Feb '06: Of the 17,609 in local facilities, 1,475 are Pre-trial Non-state offenders/arrestees
	MAY	19484	17708		37192	326	0.88%	Mar '06: Of the 20,344 in state facilities, 753 are Pre-trial Non-state offenders/arrestees
	JUN	19591	17645		37236	44	0.12%	Mar '06: Of the 17,327 in local facilities, 1,347 are Pre-trial Non-state offenders/arrestees
	JUL	19589	17685		37274	38	0.10%	Apr '06: Of the 20,113 in state facilities, 474 are Pre-trial Non-state offenders/arrestees
	AUG	25378	16819		42197	4923	13.21%	Apr '06: Of the 16,887 in local facilities, 1,010 are Pre-trial Non-state offenders/arrestees
	SEP	25437	17953		43390	1193	2.83%	May '06: Of the 20,042 in state facilities, 320 are Pre-trial Non-state offender/arrestees
	OCT	23045	17558		40603	-2787	-6.42%	May '06: Of the 16,525 in local facilities, 584 are Pre-trial Non-state offenders/arrestees
	NOV	22065	17581		39646	-957	-2.36%	June '06: Of the 20,341 in state facilities, 381 are Pre-trial Non-state offenders/arrestees
	DEC	21583	17456		39039	-607	-1.53%	June '06: Of the 16,182 in local facilities, 395 are Pre-trial Non-state offenders/arrestees
2006	JAN	20501	17780		38281	-758	-1.94%	July '06: Of the 20,396 in state facilities, 446 are Pre-trial Non-state offenders/arrestees
	FEB	20255	17609		37864	-417	-1.09%	July '06: Of the 16,112 in local facilities, 396 are Pre-trial Non-state offenders/arrestees
	MAR	20344	17327		37671	-193	-0.51%	Aug '06: Of the 20,554 in state facilities, 528 are Pre-trial Non-state offenders/arrestees
	APR	20113	16887		37000	-671	-1.78%	Aug '06: Of the 16,044 in local facilities, 302 are Pre-trial Non-state offenders/arrestees
	MAY	20042	16525		36567	-433	-1.17%	Sept '06: Of the 20,539 in state facilities, 513 are Pre-trial Non-state offenders/arrestees
	JUN	20341	16182		36523	-44	-0.12%	Sept '06: Of the 16,171 in local facilities, 209 are Pre-trial Non-state offenders/arrestees
	JUL	20396	16112		36508	-15	-0.04%	Oct '06: Of the 20,799 in state facilities, 641 are Pre-trial Non-state Offenders/arrestees
	AUG	20554	16044		36598	90	0.25%	Oct '06: Of the 16,285 in local facilities, 117 are Pre-trial Non-state offenders/arrestees
	SEP	20539	16171		36710	112	0.31%	Nov '06: Of the 20,852 in state facilities, 624 are Pre-trial Non-state Offenders/arrestees
	OCT	20799	16285		37084	374	1.02%	Nov '06: Of the 16,268 in local facilities, 93 are Pre-trial Non-state offenders/arrestees
	NOV	20852	16268		37120	36	0.10%	Dec '06: Of the 20,815 in state facilities, 572 are Pre-trial Non-state offenders/arrestees
	DEC	20815	15995		36810	-310	-0.84%	Dec '06: Of the 15,995 in local facilities, 64 are Pre-trial Non-state offenders/arrestees
								Jan '07: Of the 20,580 in state facilities, 270 are Pre-trial Non-state offenders/arrestees
								Jan '07: Of the 15,901 in local facilities, 39 are Pre-trial Non-state offenders/arrestees
								Feb '07: Of the 20,577 in state facilities, 213 are Pre-trial Non-state offender/arrestees

YEAR		STATE FACILITIES	LOCAL FACILITIES	CONTRACT TWP	TOTAL CUSTODY POPULATION			Cause of Significant Change
2007	JAN	20580	15901		36481	-329	-0.89%	Feb '07: Of the 15,942 in local facilities, 13 are Pre-trial Non-state offenders/arrestees
	FEB	20577	15942		36519	38	0.10%	Mar '07: Of the 20,596 in state facilities, 178 are Pre-trial Non-state offenders/arrestees
	MAR	20596	16066		36662	143	0.39%	Apr '07: Of the 20,795 in state facilities, 231 are Pre-trial Non-state offenders/arrestees
	APR	20795	16093		36888	226	0.62%	Apr '07: Of the 16,093 in local facilities, 1 is a Pre-trial Non-state offender/arrestee
	MAY	20772	16097		36869	-19	-0.05%	May '07: Of the 20,772 in state facilities, 217 are Pre-trial Non-state offenders/arrestees
	JUN	20,869	16121		36990	121	0.33%	May '07: Of the 16,097 in local facilities, 1 is a Pre-trial Non-state offender/arrestee
	JUL	20790	16,335		37125	135	0.36%	June '07: Of the 20,869 in state facilities, 203 are Pre-trial Non-state offenders/arrestees
	AUG	20750	16625		37375	250	0.67%	June '07: Of the 16,121 in local facilities, 1 is a Pre-trial Non-state offender/arrestee
	SEP	20700	16665		37365	-10	-0.03%	July '07: Of the 20,790 in state facilities, 214 are Pre-trial Non-state offenders/arrestees
	OCT	20600	17051		37651	286	0.77%	July '07: Of the 16,335 in local facilities, 1 is a Pre-trial Non-state offender/arrestee
	NOV	20632	17000		37632	-19	-0.05%	Aug '07: Of the 20,750 in state facilities, 181 are Pre-trial Non-state offenders/arrestees
	DEC	20461	17035		37496	-136	-0.36%	Aug '07: Of the 16,625 in local facilities, 1 is a Pre-trial Non-state offender/arrestee
2008	JAN	20507	17060		37567	71	0.19%	Oct '07: Of the 20,750 in state facilities, 181 are Pre-trial Non-state offenders/arrestees
	FEB	20575	17024		37599	32	0.09%	Oct '07: Of the 20,600 in state facilities, 173 are Pre-trial Non-state offenders/arrestees
	MAR	20537	17360		37897	298	0.79%	Nov '07: Of the 20,632 in state facilities, 217 are Pre-trial Non-state offenders/arrestees
	APR	20671	17168		37839	-58	-0.15%	Nov '07: Of the 17,000 in local facilities, 1 is a Pre-trial Non-state offender/arrestee
	MAY	20644	17322		37966	127	0.34%	Dec '07: Of the 20,461 in state facilities, 198 are Pre-trial Non-state offenders/arrestees
	JUN	20929	17347		38276	310	0.82%	Dec '07: Of the 17,034 in local facilities, 1 is a Pre-trial Non-state offender/arrestee
	JUL	20782	17,455		38237	-39	-0.10%	Jan '08: Of the 20,507 in state facilities, 199 are physically located in Bureau of Prisons in Florida
	AUG	20887	17716		38603	366	0.96%	Jan '08: Of the 17,060 in local facilities, 1 is a Pre-trial Non-state offenders/arrestees
	SEP	21673	17493		39166	563	1.46%	Feb '08: Of the 20,575 in state facilities, 200 are Pre-trial Non-state offenders/arrestees
	OCT	21199	17604		38803	-363	-0.93%	Feb '08: Of the 17,024 in local facilities, 1 is a Pre-trial Non-state offender/arrestee
	NOV	20997	17559		38556	-247	-0.64%	Mar '08: Of the 20537 in state facilities, 144 are Pre-trial Non-state offenders/arrestees
	DEC	20857	17371		38228	-328	-0.85%	Mar '08: As of this month, local facilities are no longer housing Pre-trial Non-state offenders/arrestees
2009	JAN	19698	17565	1111*	38374	146	0.38%	Apr '08: Of the 20,671 in state facilities, 200 are Pre-trial Non-state offenders/arrestees
	FEB	19802	17683	1110	38595	221	0.58%	May '08: Of the 20,644 in state facilities, 152 are Pre-trial Non-state offenders/arrestees
	MAR	19868	17988	1123	38979	384	0.99%	June '08: Of the 20,622 in state facilities, 307 are Pre-trial Non-state offenders/arrestees
	APR	19266	18298	1161	38725	-254	-0.65%	July '08: Of the 20,782 in state facilities, 183 are Pre-trial Non-state offenders/arrestees
	MAY	19252	18533	1129	38914	189	0.49%	Aug '08: Of the 20,887 in state facilities, 193 are Pre-trial Non-state offenders/arrestees
	JUN	19301	18420	1065	38786	-128	-0.33%	Sept '08: Of the 21,673 in state facilities, 1,199 are Pre-trial Non-state offenders/arrestees
	JUL	19187	18723	1099	39009	223	0.57%	Sept '08: Of the 21,673 in state facilities, 1,199 are Pre-trial Non-state offenders/arrestees
	AUG	19003	19350	1091	39444	435	1.12%	Oct '08: Of the 21,199 in state facilities, 618 are Pre-trial Non-state offenders/arrestees
	SEP	19013	19634	1079	39726	282	0.71%	Nov '08: Of the 20,997 in state facilities, 615 are Pre-trial Non-state offenders/arrestees
	OCT	19003	19923	1038	39964	238	0.60%	Dec '08: Of the 20,857 in state facilities, 577 are Pre-trial Non-state offenders/arrestees
	NOV	19024	19869	1034	39927	-37	-0.09%	Ending of George Washington University Projections
	DEC	18896	19891	993	39780	-147	-0.37%	*Effective 1/1/09 Budgeted projections have been used and contract transitional work program was separated out from State Facilities.
2010	JAN	18774	20059	994	39827	47	0.12%	
	FEB	18697	20207	981	39885	58	0.15%	
	MAR	18868	20201	1007	40076	191	0.48%	
	APR	18928	20044	1016	39988	-88	-0.22%	
	MAY	18863	20122	995	39980	-8	-0.02%	
	JUN	18963	19827	1032	39822	-158	-0.40%	
	JUL	18973	19651	1055	39679	-143	-0.36%	
	AUG	18944	19865	1104	39913	234	0.59%	
	SEP	19103	19964	1126	40193	280	0.70%	
	OCT	19041	19675	1118	39834	-359	-0.89%	
	NOV	19070	19410	1138	39618	-216	-0.54%	
	DEC	19008	19287	1096	39391	-227	-0.57%	
2011	JAN	18983	19373	1120	39476	85	0.22%	
	FEB	18978	19460	1150	39588	112	0.28%	
	MAR	18896	19759	997	39652	64	0.16%	
	APR	18628	20016	1023	39667	15	0.04%	
	MAY	18137	20641	988	39766	99	0.25%	May '11: Threat of the flooding of the Mississippi River occurred on 5/9/11, LSP offenders were evacuated to other state facilities, therefore intakes from parish prisons were suspended for 7 weeks.
	JUN	17980	20709	994	39683	-83	-0.21%	
	JUL	18269	20335	1006	39610	-73	-0.18%	
	AUG	18690	20169	982	39841	231	0.58%	
	SEP	18779	20296	1004	40079	238	0.60%	
	OCT	18786	20334	1005	40125	46	0.11%	
	NOV	18843	20299	999	40141	16	0.04%	
	DEC	18843	19892	974	39709	-432	-1.08%	
2012	JAN	18825	20014	989	39828	119	0.30%	
	FEB	18818	20314	976	40108	280	0.70%	
	MAR	18765	20684	971	40420	312	0.78%	
	APR	18732	20630	959	40321	-99	-0.24%	
	MAY	18561	20988	989	40538	217	0.54%	
	JUN	18236	21230	994	40460	-78	-0.19%	
	JUL	18124	21257	1005	40386	-74	-0.18%	
	AUG	18236	21063	976	40275	-111	-0.27%	
	SEP	18271	21289	1008	40568	293	0.73%	
	OCT	18194	21317	1008	40519	-49	-0.12%	
	NOV	18216	21256	979	40451	-68	-0.17%	
	DEC	18599	20624	947	40170	-281	-0.69%	

YEAR		STATE FACILITIES	LOCAL FACILITIES	CONTRACT TWP	TOTAL CUSTODY POPULATION			Cause of Significant Change
2013	JAN	18611	20466	962	40039	-131	-0.33%	
	FEB	18687	20446	963	40096	57	0.14%	
	MAR	18671	20413	941	40025	-71	-0.18%	
	APR	18666	20305	959	39930	-95	-0.24%	
	MAY	18604	20409	928	39941	11	0.03%	
	JUN	18703	20315	908	39926	-15	-0.04%	
	JUL	18870	19860	913	39643	-283	-0.71%	
	AUG	18828	19854	977	39659	16	0.04%	
	SEP	18894	19867	995	39756	97	0.24%	
	OCT	18837	19833	1022	39692	-64	-0.16%	
	NOV	18842	19693	1017	39552	-140	-0.35%	
	DEC	18913	19393	993	39299	-253	-0.64%	
2014	JAN	18923	19292	964	39179	-120	-0.31%	
	FEB	18992	19431	955	39378	199	0.51%	
	MAR	18802	19499	977	39278	-100	-0.25%	
	APR	18757	19429	957	39143	-135	-0.34%	
	MAY	18753	19531	950	39234	91	0.23%	
	JUN	18763	19366	933	39062	-172	-0.44%	
	JUL	18787	19301	935	39023	-39	-0.10%	
	AUG	18774	19475	963	39212	189	0.48%	
	SEP	18778	19491	942	39211	-1	0.00%	
	OCT	18853	19128	941	38922	-289	-0.74%	
	NOV	18900	18911	926	38737	-185	-0.48%	
	DEC	18787	18308	935	38030	-707	-1.83%	
2015	JAN	18767	18027	945	37739	-291	-0.77%	
	FEB	18611	17874	988	37473	-266	-0.70%	
	MAR	18601	18050	1000	37651	178	0.48%	
	APR	18247	18169	1036	37452	-199	-0.53%	
	MAY	18296	18086	1019	37401	-51	-0.14%	
	JUN	18256	18011	1033	37300	-101	-0.27%	
	JUL	18091	17794	1054	36939	-361	-0.97%	
	AUG	18093	17758	1059	36910	-29	-0.08%	
	SEP	18157	17653	1064	36874	-36	-0.10%	
	OCT	18321	17594	957	36872	-2	-0.01%	
	NOV	18425	17069	1101	36595	-277	-0.75%	
	DEC	18430	16877	1070	36377	-218	-0.60%	
2016	JAN	18,496	16973	1064	36533	156	0.43%	
	FEB	18,474	16977	1053	36504	-29	-0.08%	
	MAR	18,542	16872	1049	36463	-41	-0.11%	
	APR	18,622	16605	1027	36254	-209	-0.57%	
	MAY	18,567	16769	1054	36390	136	0.38%	
	JUN	18,612	16646	1022	36280	-110	-0.30%	
	JUL	15,314	19743	1065	36122	-158	-0.44%	Jul '16- ALC and WNC classed as local facilities
	AUG	14,230	20631	1034	35895	-227	-0.63%	Aug '16- Flooding caused evacuation of LCIW
	SEP	14,988	20238	969	36195	300	0.84%	
	OCT	15,095	20220	1020	36335	140	0.39%	
	NOV	15,174	19875	1008	36057	-278	-0.77%	
	DEC	15,162	19504	1016	35682	-375	-1.04%	**Actual data depicted to this point
2017	JAN	15,188	19,976	1000	36164	482	1.35%	Projected figures start
	FEB	15,188	20,108	1000	36296	132	0.37%	
	MAR	15,188	20,136	1000	36324	29	0.08%	
	APR	15,188	20,216	1000	36404	80	0.22%	
	MAY	15,188	20,288	1000	36476	72	0.20%	
	JUN	15,188	20,220	1000	36408	-68	-0.19%	
	JUL	15,188	20,198	1000	36386	-22	-0.06%	
	AUG	15,188	20,177	1000	36365	-21	-0.06%	
	SEP	15,188	20,188	1000	36376	10	0.03%	
	OCT	15,188	20,175	1000	36363	-13	-0.04%	
	NOV	15,188	20,159	1000	36347	-15	-0.04%	
	DEC	15,188	20,146	1000	36334	-13	-0.04%	
2018	JAN	15,524	19,812	1000	36336	2	0.01%	
	FEB	15,524	19,837	1000	36361	25	0.07%	
	MAR	15,524	19,815	1000	36339	-23	-0.06%	
	APR	15,524	19,851	1000	36375	36	0.10%	
	MAY	15,524	19,893	1000	36417	42	0.12%	
	JUN	15,524	19,944	1000	36468	51	0.14%	
	JUL	15,524	19,955	1000	36479	11	0.03%	
	AUG	15,524	19,973	1000	36497	18	0.05%	
	SEP	15,524	19,963	1000	36487	-10	-0.03%	
	OCT	15,524	20,031	1000	36555	68	0.19%	
	NOV	15,524	20,124	1000	36648	93	0.25%	
	DEC	15,524	20,196	1000	36720	72	0.20%	

YEAR		STATE FACILITIES	LOCAL FACILITIES	CONTRACT TWP	TOTAL CUSTODY POPULATION		Cause of Significant Change
2019	JAN	15,524	20,276	1,000	36,800	80	0.20%
	FEB	15,524	20,316	1,000	36,840	40	0.11%
	MAR	15,524	20,257	1,000	36,781	-58	-0.16%
	APR	15,524	20,304	1,000	36,828	47	0.13%
	MAY	15,524	20,343	1,000	36,867	39	0.11%
	JUN	15,524	20,390	1,000	36,914	47	0.13%
	JUL	15,524	20,416	1,000	36,940	26	0.07%
	AUG	15,524	20,465	1,000	36,989	49	0.13%
	SEP	15,524	20,443	1,000	36,967	-22	-0.06%
	OCT	15,524	20,461	1,000	36,985	17	0.05%
	NOV	15,524	20,484	1,000	37,008	23	0.06%
	DEC	15,524	20,520	1,000	37,044	36	0.10%
2020	JAN	15,524	20,534	1,000	37,058	14	0.04%
	FEB	15,524	20,559	1,000	37,083	24	0.07%
	MAR	15,524	20,498	1,000	37,022	-60	-0.16%
	APR	15,524	20,516	1,000	37,040	17	0.05%
	MAY	15,524	20,512	1,000	37,036	-3	-0.01%
	JUN	15,524	20,527	1,000	37,051	15	0.04%
	JUL	15,524	20,530	1,000	37,054	3	0.01%
	AUG	15,524	20,527	1,000	37,051	-3	-0.01%
	SEP	15,524	20,472	1,000	36,996	-55	-0.15%
	OCT	15,524	20,488	1,000	37,012	16	0.04%
	NOV	15,524	20,492	1,000	37,016	4	0.01%
	DEC	15,524	20,506	1,000	37,030	14	0.04%
2021	JAN	15,524	20,539	1,000	37,063	33	0.09%
	FEB	15,524	20,560	1,000	37,084	21	0.06%
	MAR	15,524	20,471	1,000	36,995	-89	-0.24%
	APR	15,524	20,481	1,000	37,005	10	0.03%
	MAY	15,524	20,487	1,000	37,011	6	0.02%
	JUN	15,524	20,476	1,000	37,000	-11	-0.03%
	JUL	15,524	20,465	1,000	36,989	-11	-0.03%
	AUG	15,524	20,474	1,000	36,998	9	0.03%
	SEP	15,524	20,374	1,000	36,898	-100	-0.27%
	OCT	15,524	20,393	1,000	36,917	18	0.05%
	NOV	15,524	20,379	1,000	36,903	-14	-0.04%
	DEC	15,524	20,386	1,000	36,910	7	0.02%
2022	JAN	15,524	20,397	1,000	36,921	12	0.03%
	FEB	15,524	20,404	1,000	36,928	7	0.02%
	MAR	15,524	20,417	1,000	36,941	13	0.04%
	APR	15,524	20,425	1,000	36,949	8	0.02%
	MAY	15,524	20,415	1,000	36,939	-10	-0.03%
	JUN	15,524	20,424	1,000	36,948	9	0.02%
	JUL	15,524	20,429	1,000	36,953	5	0.01%
	AUG	15,524	20,417	1,000	36,941	-12	-0.03%
	SEP	15,524	20,431	1,000	36,955	14	0.04%
	OCT	15,524	20,437	1,000	36,961	6	0.02%
	NOV	15,524	20,426	1,000	36,950	-11	-0.03%
	DEC	15,524	20,428	1,000	36,952	2	0.01%
2023	JAN	15,524	20,421	1,000	36,945	-7	-0.02%
	FEB	15,524	20,410	1,000	36,934	-12	-0.03%
	MAR	15,524	20,409	1,000	36,933	0	0.00%
	APR	15,524	20,404	1,000	36,928	-5	-0.01%
	MAY	15,524	20,400	1,000	36,924	-4	-0.01%
	JUN	15,524	20,388	1,000	36,912	-12	-0.03%
	JUL	15,524	20,387	1,000	36,911	-1	0.00%
	AUG	15,524	20,379	1,000	36,903	-8	-0.02%
	SEP	15,524	20,361	1,000	36,885	-18	-0.05%
	OCT	15,524	20,341	1,000	36,865	-20	-0.06%
	NOV	15,524	20,334	1,000	36,858	-6	-0.02%
	DEC	15,524	20,323	1,000	36,847	-11	-0.03%

DATE: 12/28/2016
DEPARTMENT OF PUBLIC SAFETY AND CORRECTIONS
WEEKLY VACANCY AND RELEASE REPORT

INSTITUTIONS	OPERATIONAL CAPACITY	ASSIGNED	PHYSICALLY PRESENT	NON DOC/ PARISH HOLDS	CURRENT VACANCIES	PROJECTED RELEASES
WARDEN'S REGION 1						
DWCC *1	1174	1177	1176	0	-3	1
PROTECTION (WCC)	50	49	49	0	1	0
SUBTOTAL DWCC	1224	1226	1225	0	-2	1
DCI	1378	1396	1389	1	-19	5
Youthful Offender	40	12	12	0	28	0
UNIT 3	242	233	233	0	9	0
UNIT 4	140	133	133	0	7	0
SUBTOTAL DCI	1800	1774	1767	1	25	5
EHCC - GEN. POP.	1510	1554	1550	0	-44	8
SKILLED NURSING UNIT *4	54	55	55	0	-1	0
HRDC	411	405	389	4	2	3
SUBTOTAL HCC	1975	2014	1994	4	-43	11
LSP	6052	6150	6131	0	-98	1
NURSING UNIT 2	34	25	25	0	9	0
LSP/LCIW	136	71	71	0	65	1
DEATH ROW	90	73	73	0	17	0
SUBTOTAL LSP	6312	6319	6300	0	-7	2
REGION 1 TOTAL	11311	11333	11286	5	-27	19
WARDEN'S REGION 2						
RLCC	1688	1691	1689	0	-3	8
JLDCC	120	115	115	0	5	0
SUBTOTAL AVC	1808	1806	1804	0	2	8
LCIW - GEN. POP. *7,8	912	0	0	0	912	0
FRDC *8	20	0	0	0	20	0
DEATH ROW *8	4	0	0	0	4	0
LCIW/EHCC	296	265	265	0	31	0
LCIW/JETSON	304	304	304	0	0	0
SUBTOTAL LCIW	1536	569	569	0	967	0
RCC *6	1314	1314	1312	0	0	0
STATE POLICE	155	140	140	0	15	0
ALC *10	1576	1443	1443	0	133	2
WNC *10	1576	1442	1442	0	134	3
REGION 2 TOTAL	7965	6714	6710	0	1251	13
TOTAL INSTITUTION *10	16124	15162	15111	5	957	27
TOTAL ALC & WNC	3152	2885	2885	0	267	5
TOTAL	19276	18047	17996	5	1224	32
CONTRACT TWP						
CEDARWOOD MANOR	100	92	92	0	8	0
COF/MON-MEN	162	94	94	0	68	0
EFL TWP	75	74	74	0	1	0
LAFOURCHE TWP	174	126	126	0	48	1
WFL TWP	60	58	58	0	2	0
RAPIDES TWP *2	200	137	137	0	63	2
SOUTHWEST TWP	350	219	219	0	131	1
STM TWP	70	64	64	0	6	0
WBR TWP *3	185	152	152	0	33	1
TOTAL CONTRACT TWP *5	1376	1016	1016	0	360	5
GRAND TOTAL	20652	19063	19012	5	1584	37

*1 Includes 0 WRDC.
*2 RAP TWP Co-op agreement is for 245.
*3 WBR TWP Co-op agreement is for 185.
*4 rated capacity is 64
*5 totals are included on the CFACILITY report
*6 physically present includes 0 intensive incarceration offenders
*7 physically present includes 0 intensive incarceration offenders
*8 currently empty due to evacuation because of flooding.
*9 there are 36 Orleans non DOC offenders in the HSU dorm not included in Hunt totals
*10 ALC and WNC are not included in the Total Institution counts