

**Louisiana Department of Public Safety
and Corrections
Corrections Services**

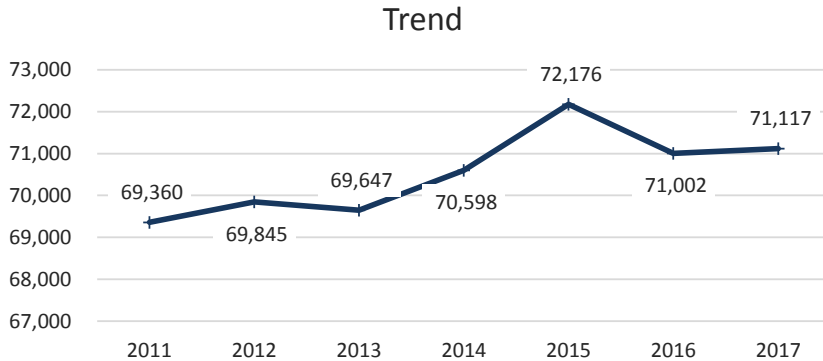
**James M. Le Blanc
Secretary**

**FACT SHEET
December 31, 2017**



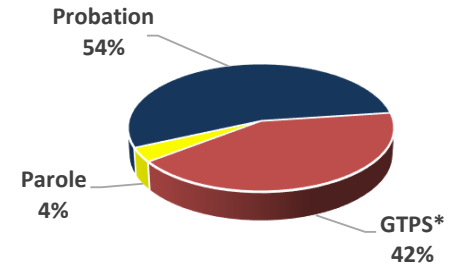
This document represents a demographic snapshot of the adult probation and parole population under state supervision on December 31, 2017

Presently there are 38,822 probationers and 32,295 parolees being supervised by the Department. The parole population includes those offenders released pursuant to diminution of sentence/parole supervision for a total of 71,117

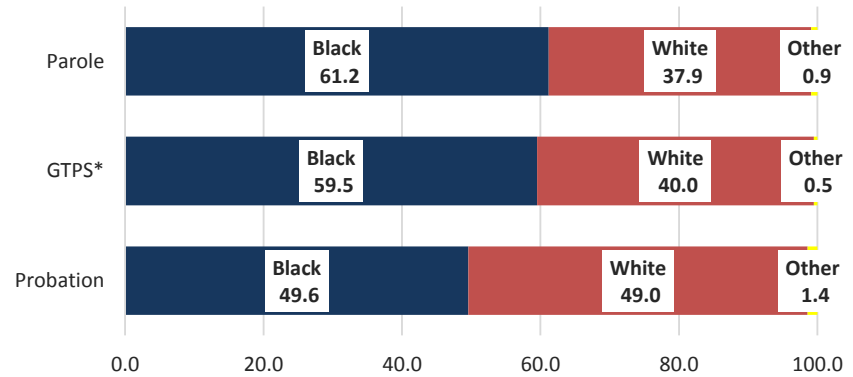


*Demographic Profiles of the
Adult Probation and Parole Population*

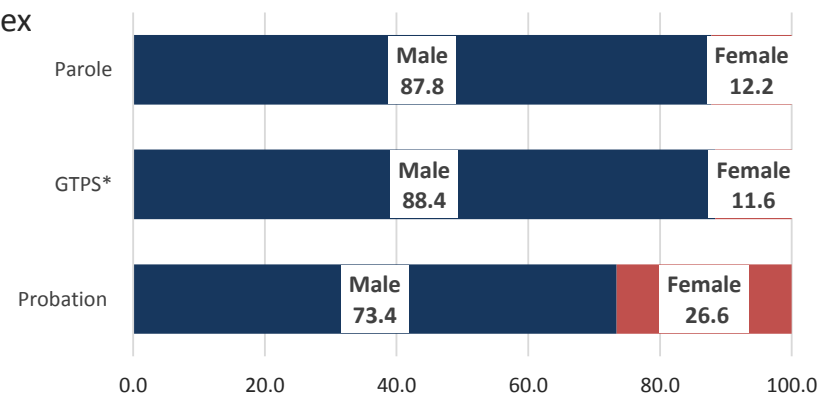
71,117



Race

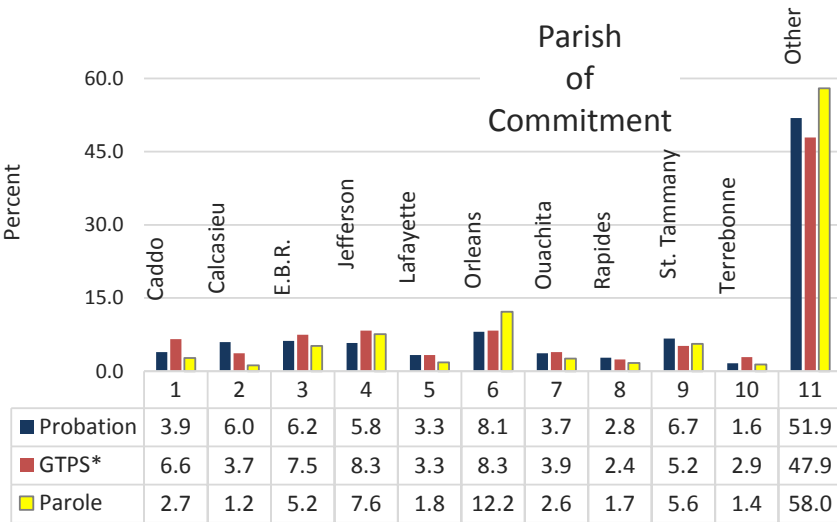
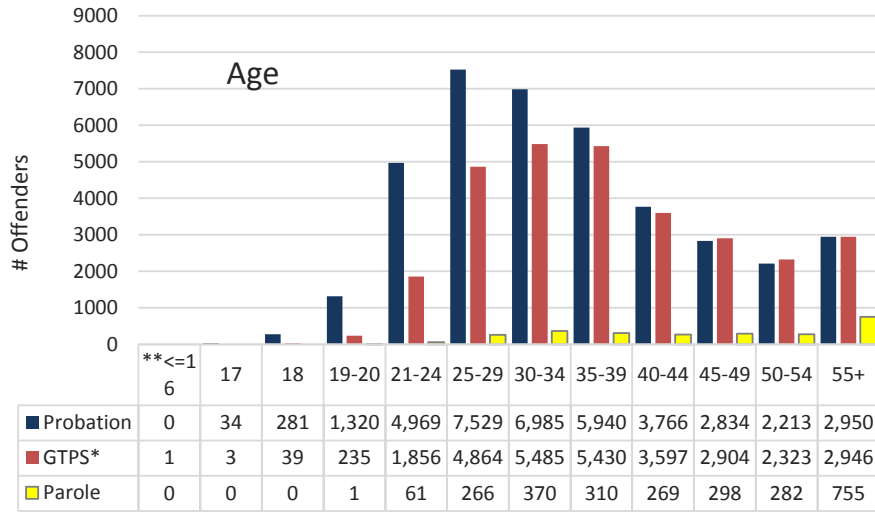


Sex



*(Diminution of sentence) GTPS-goodtime/parole supervision

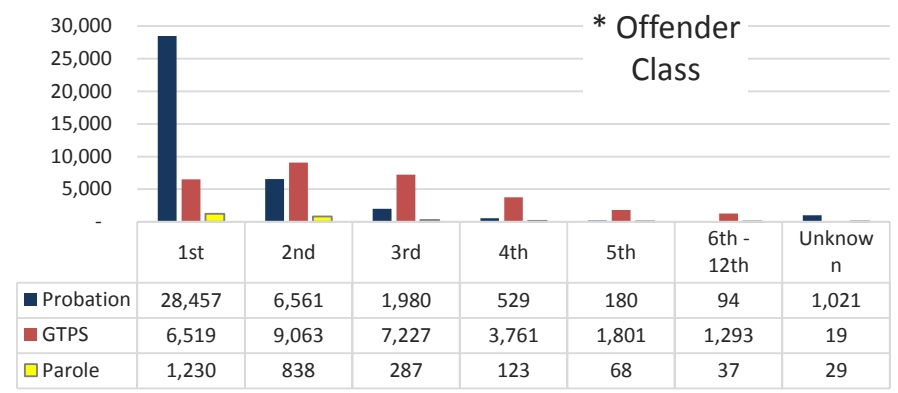
Demographic Profiles of the Adult Probation and Parole Population



*(Diminution of sentence) GTPS-goodtime/parole supervision

Demographic Profiles of the Adult Probation and Parole Population

FACT SHEET
December 31, 2017



* Offender class is the number of sequential felonies committed for which an offender has been convicted

Most Serious Commitment Crime	Probation	GTPS*	Parole
Violent Crimes	9.1%	10.3%	33.5%
Drug Crimes	42.6%	41.3%	40.2%
Property Crimes	30.8%	29.5%	17.4%
All Other Crimes	17.5%	18.9%	8.9%

Max Sent (yrs)	Probation	GTPS*	Parole
0-2	21.3%	12.5%	1.9%
3-4	36.3%	20.2%	2.8%
5	38.2%	18.5%	7.8%
6-10	2.7%	30.5%	20.1%
11-16	0.2%	10.3%	5.6%
17-20	0.0%	3.1%	2.9%
>20	0.1%	4.7%	25.8%
Death	0.0%	0.0%	0.0%
Pending Calculation/Recalculation	1.2%	0.2%	27.8%
Avg Max Sent:	3.8	28.6	7.9

Overall Avg. Max Sent: 6.20 years

**Louisiana Department of Public Safety
and Corrections
Corrections Services**

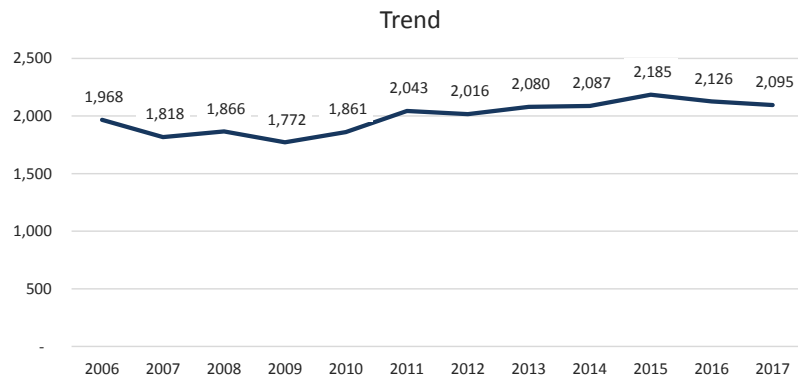
**James M. Le Blanc
Secretary**

**FACT SHEET
December 31, 2017**



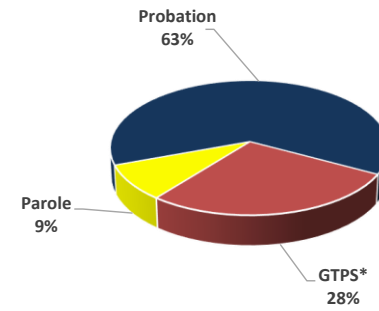
This document represents a demographic snapshot of the adult sex offender probation and parole population under state supervision on December 31, 2017.

Presently there are 1,327 probationers, 183 parolees, and 585 offenders released pursuant to diminution of sentence for a total of 2,095 being supervised by the Department.

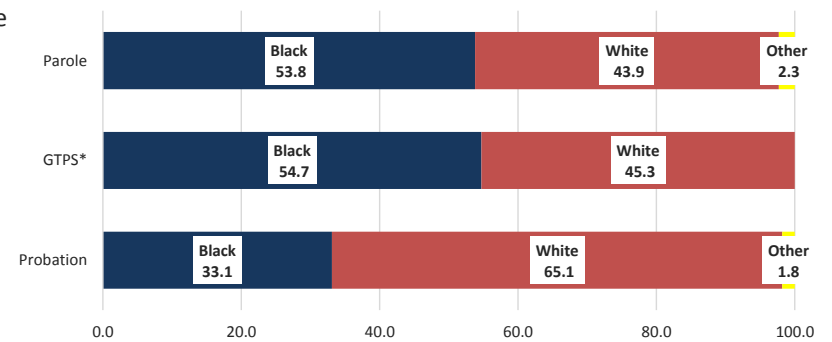


*Demographic Profiles of the
Adult Sex Offender Probation and Parole Population*

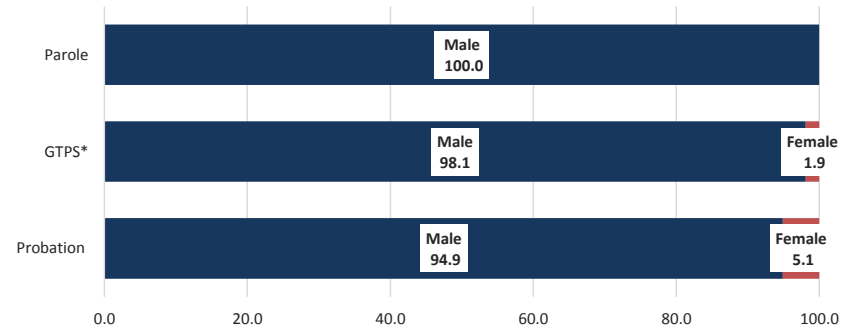
2,095



Race



Sex



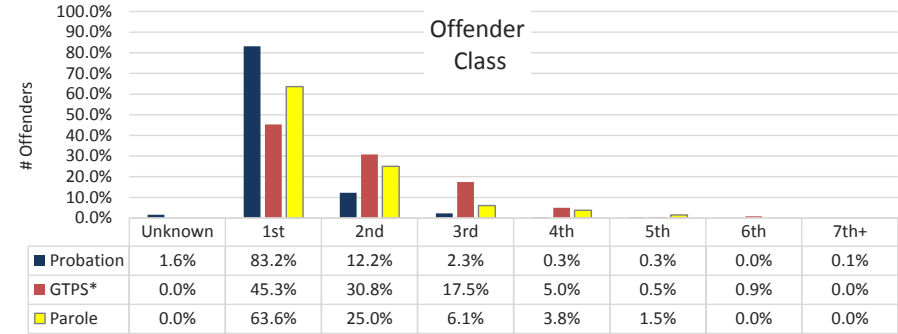
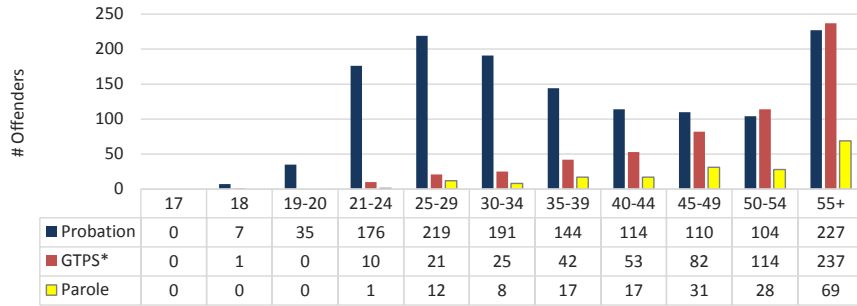
*(Diminution of sentence) GTPS-goodtime/parole supervision

Demographic Profiles of the
Adult Sex Offender Probation and Parole Population

Demographic Profiles of the
Adult Sex Offender Probation and Parole Population

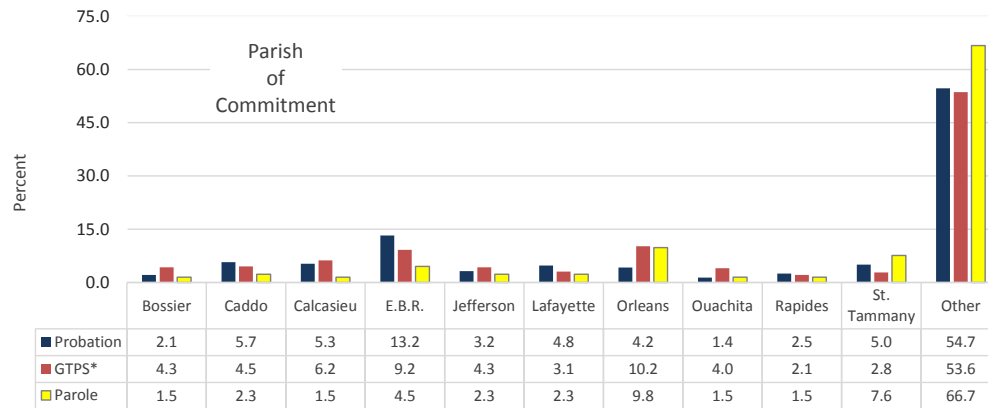
FACT SHEET
December 31, 2017

Age



Most Serious Commitment Crime	Probation	GTPS*	Parole
Violent Crimes	7.7%	69.1%	65.2%
Drug Crimes	0.7%	3.6%	1.5%
Property Crimes	0.6%	5.5%	1.5%
All Other Crimes	91.0%	21.8%	31.8%

* Offender class is the number of sequential felonies committed for which an offender has been convicted



Max Sent(Yrs.)	Probation	GTPS*	Parole
0-2	7.5%	6.2%	3.0%
3-4	18.5%	3.8%	3.0%
5-6	66.6%	9.0%	3.0%
7-10	5.2%	9.2%	6.0%
11-16	0.7%	15.9%	2.3%
17-20	0.3%	10.2%	6.1%
>20	0.1%	45.7%	15.9%
Life	0.0%	0.0%	17.4%
Death	0.0%	0.0%	0.0%
Pending Calculation/Recalculation	1.1%	0.0%	43.3%

Avg. Maximum Sentence: 10.7 years

100.0% 100.0% 100.0%

*(Diminution of sentence) GTPS-goodtime/parole supervision